



CARIBOU DOME COPPER PROJECT

MAY 2015



COMPANY BACKGROUND



- Feb 2014 – Divested Canadian gold assets to Chalice Gold Mines
- May 2014 - Current management team appointed
- Nov 2014 - Announced intention to acquire an 80% interest in the high-grade Caribou Dome Copper Project in Alaska
- Dec 2014 - De-listed from the TSX-V (was dual-listed; now solely ASX-listed)
- 20 Feb 2015 - Shareholder approval received for the Caribou Dome Project
- 21 May 2015 – Announced \$800k Placement to fund inaugural exploration program at the Caribou Dome Project



CYY share price/volume history on the ASX for the past 12 months.

Coventry Securities	Number*
Shares on issue	208.2M
Options (exercisable at C\$0.05)	6.4M
Options (exercisable at A\$0.014)	20.0M
Market capitalisation (at \$0.016/share)	A\$3.3M

Major Shareholders	%*
Board and Management	20.2%
Sun Valley Gold Master Fund	6.6%
Macquarie Bank	3.0%

* Post Placement announced to ASX on 21 May 2015

Multiple compelling high-grade copper results to be EXPANDED



ALASKA

BOARD AND MANAGEMENT



Mark Bojanjac, Non-Executive Chairman

Chartered Accountant

- 30 years minerals experience
- Formerly CEO of Adamus Resources Limited (Ghana)
- Founding director of Gilt-Edged Mining (Kundana) and a 3Moz Chinese gold project
- Previous MD of AGR Limited (Boroo), in Mongolia
- Current non-exec director of Geopacific Resources Limited

Mike Haynes, CEO

Geologist/Geophysicist

- Formerly employed by BHP and Billiton
- Involved in multiple IPO's/RTO's during past 10 years
- Current MD of Black Range Minerals Limited and Chairman of Overland Resources Limited

Ian Cunningham, Executive Director

CFO and Company Secretary, Chartered Accountant and Chartered Secretary

- Former CFO and Company Secretary of Adamus Resources Limited
- Current Company Secretary of Black Range Minerals Limited

Michael Fowler, Non-Executive Director

Geologist

- Former Exploration Manager and CEO of Croesus Mining Limited
- Current MD of Genesis Minerals Limited

Bob Boaz – Non-Executive Director

Masters Degree in Economics

- Former Managing Director, Investment Banking with Raymond James Ltd and Vice-President, Head of Research and in-house portfolio strategist for Dundee Securities Corporation
- Current CEO/President of Aura Silver Resources Inc and director of Santa Barbara Resources Ltd, Caracara Silver Inc and Renaissance Gold Inc.



ALASKA

PROJECT SUMMARY

Shallow, very high-grade sediment-hosted copper mineralisation

Excellent access/logistics:

- Direct road access to the deposit
- Only ~100km to an operating railway
- 3 ports connected to this rail line

Significant exploration upside:

- Mineralisation **identified over 15km of strike**
- Previous drilling concentrated on just 250 metres of strike
- Exceptional exploration targets identified

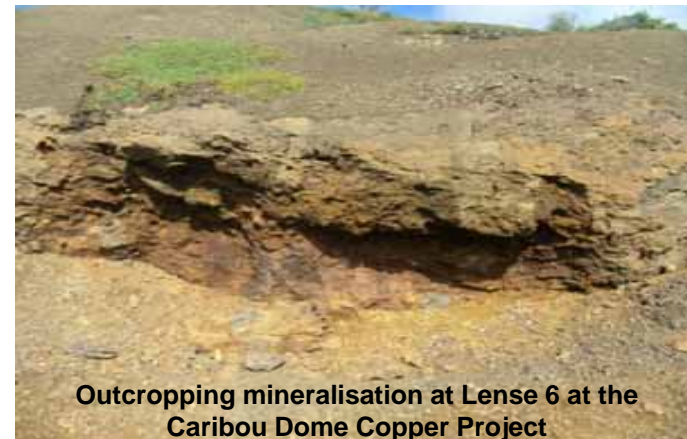
Metallurgical recoveries up to 91.7% in preliminary testwork

~1,000m of underground access development

Attractive earn-in terms

Exceptional early-stage drilling results include:

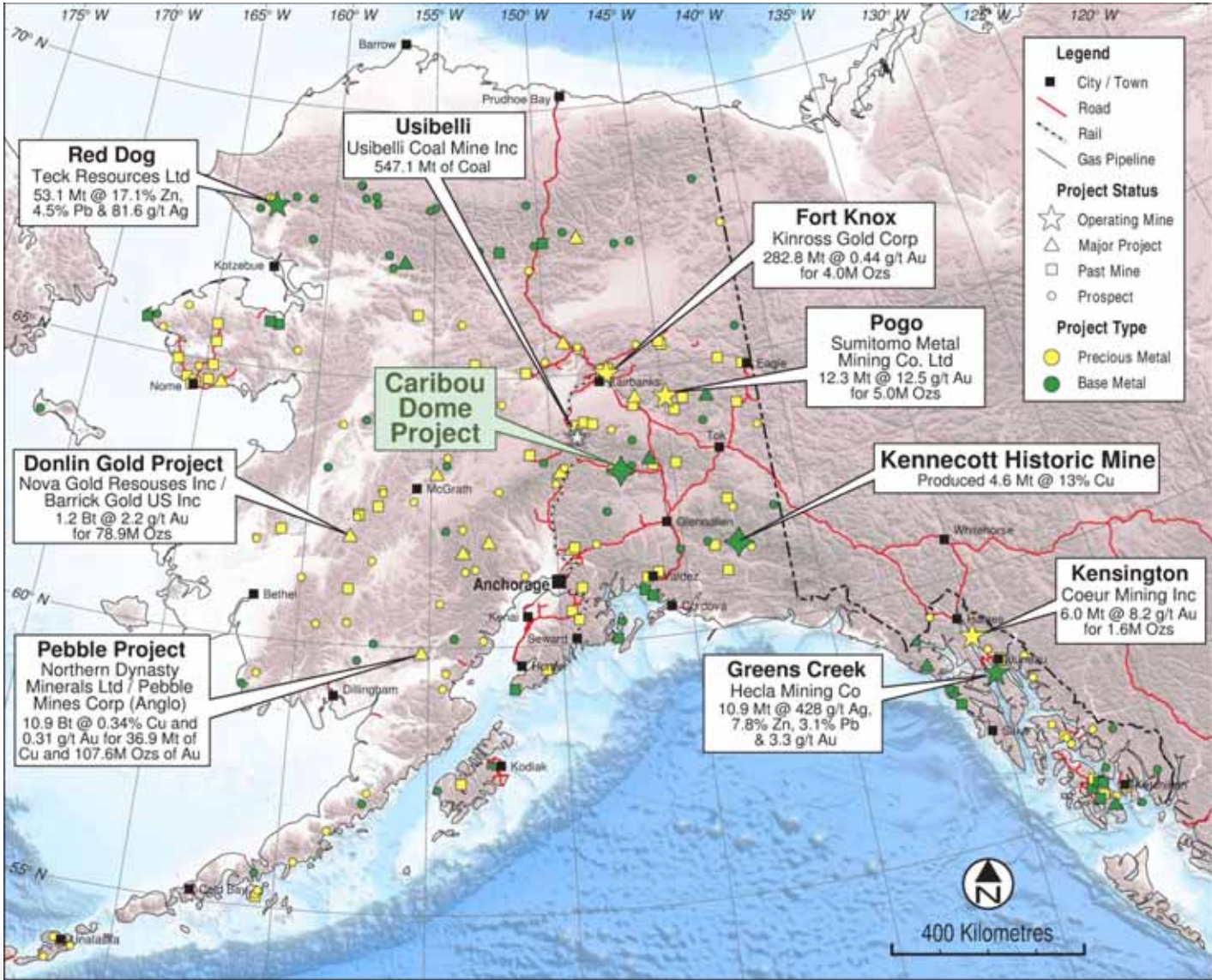
18.1m at 9.34% copper from 22.7m
18.4m at 6.25% copper from 31.4m
15.4m at 7.01% copper (underground drilling)
13.1m at 7.20% copper from 15.8m
11.0m at 8.20% copper from 29.0m
10.4m at 7.94% copper from 14.0m
12.8m at 5.78% copper (underground drilling)



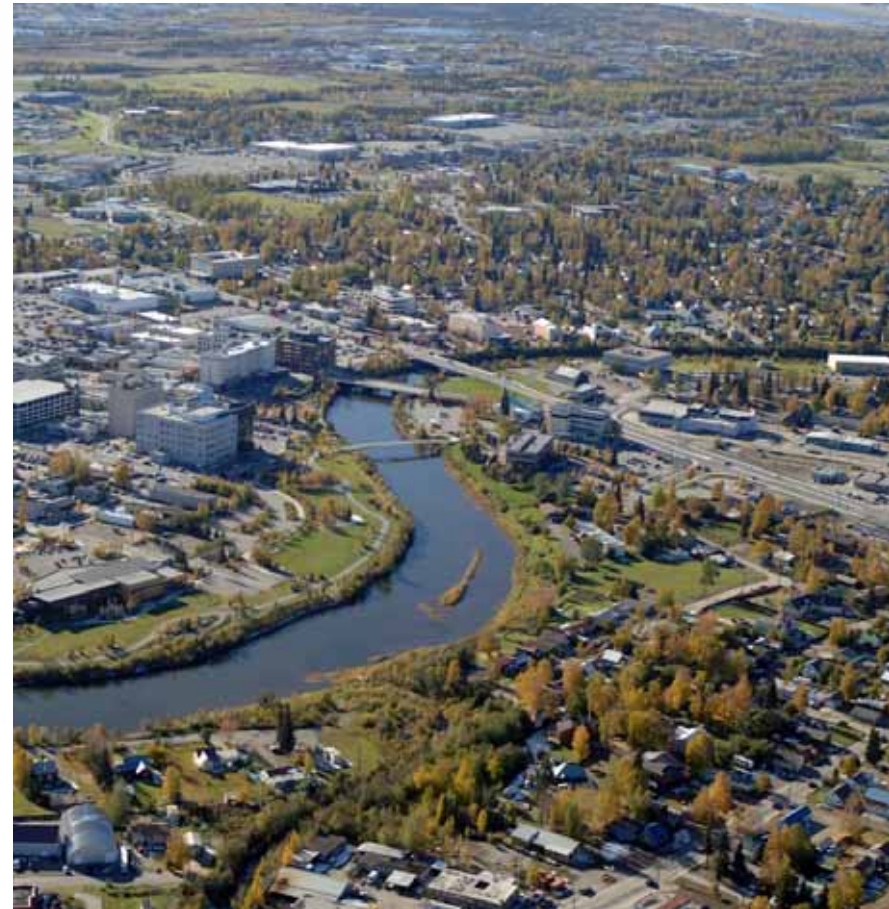
Outcropping mineralisation at Lense 6 at the Caribou Dome Copper Project

Initial exploration target of 5-10Mt of mineralisation at 2.5-4.0% copper*

SURROUNDED BY MINES



- **USA – stable mining law**
- **Pro mining – 80% GDP is oil/gas/mining**
- **In the Fraser Institute’s 2014 “Top 10” jurisdictions for Investment Attractiveness Index**
- **Population under 1.0M**
- **Sub-arctic climate operable all year**
- **Produced 40M+ oz gold to date**
- **Hosted world’s richest-grade (13%) copper mine at Kennecott**
- **6 currently producing mines**
- **Readily available mining support, suppliers and services**
- **Good mining infrastructure road, rail and shipping**

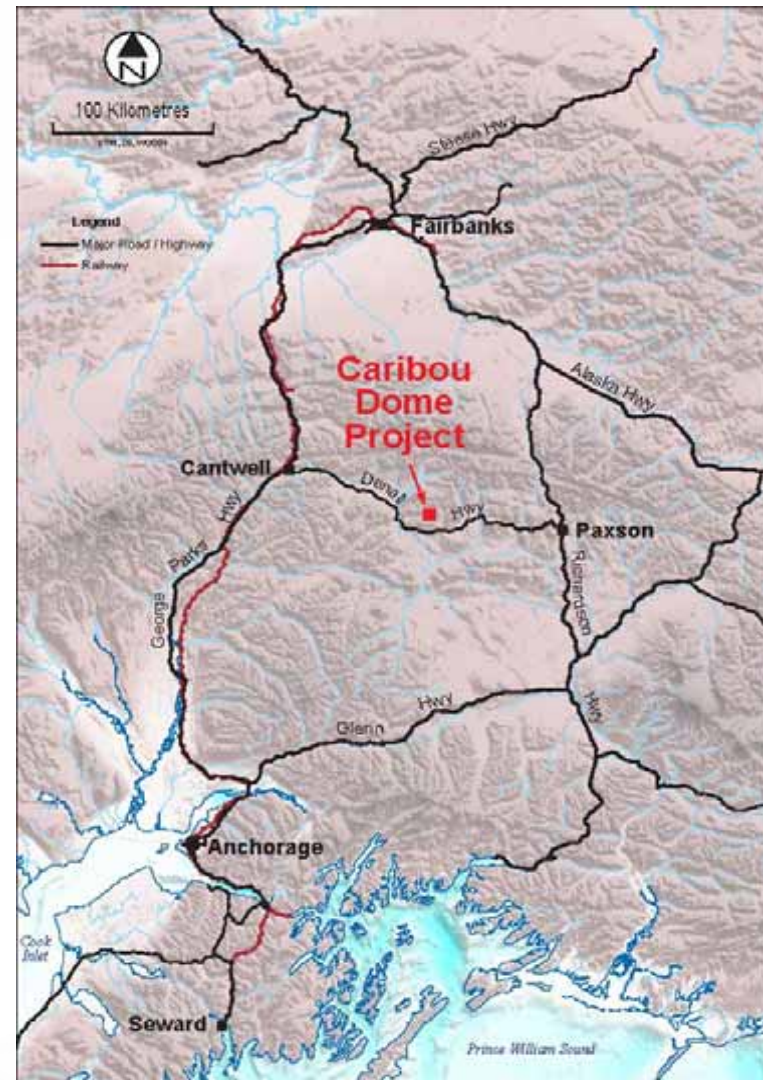


Fairbanks, Alaska



EXCELLENT ACCESS

- 250km NE of capital city, Anchorage
- Just off the Denali Highway
- 20km of purpose built road direct to the underground openings at the Project from the Denali Highway
- Only ~100km east of the Anchorage-Fairbanks railway line at Cantwell
- Project comprises ~21,280 acres (~86km²)
 - Originally comprised 10,240 acres of State mining claims covering a complete 4 mile x 4 mile area
 - Recently added an additional 11,040 acres immediately along strike, covering extensions of prospective stratigraphy together with additional historic mineral occurrences



Location of the Caribou Dome Copper Project
Alaska, USA

CARIBOU DOME COPPER PROJECT - HISTORY

- 1963 – Mineralisation first discovered**
- 1964 – First 7 diamond holes drilled**
- 1969 – 425m expl. adit developed on 4,630ft RL**
- 1970 – 520m expl. decline developed from 4,510ft**
- 2008 – 225kg bulk sample acquired for metallurgical testwork**

Virtually all previous work undertaken 1964-1970 (95 of 112 diamond holes)

Date	Diamond				Percussion	
	Surface		Underground		No. Holes	Metres
	No. Holes	Metres	No. Holes	Metres		
1964	7	465				
1965	14	857				
1966	17	877				
1967	6	367				
1969	2	196	7	947		
1970			42	2,374	134	3,283
1977	3	120				
1999	3	744				
2009	2	621				
2011	9	794				
Totals	63	5,041	49	3,321	134	3,283

Summary of previous drilling completed at the Caribou Dome Copper Project



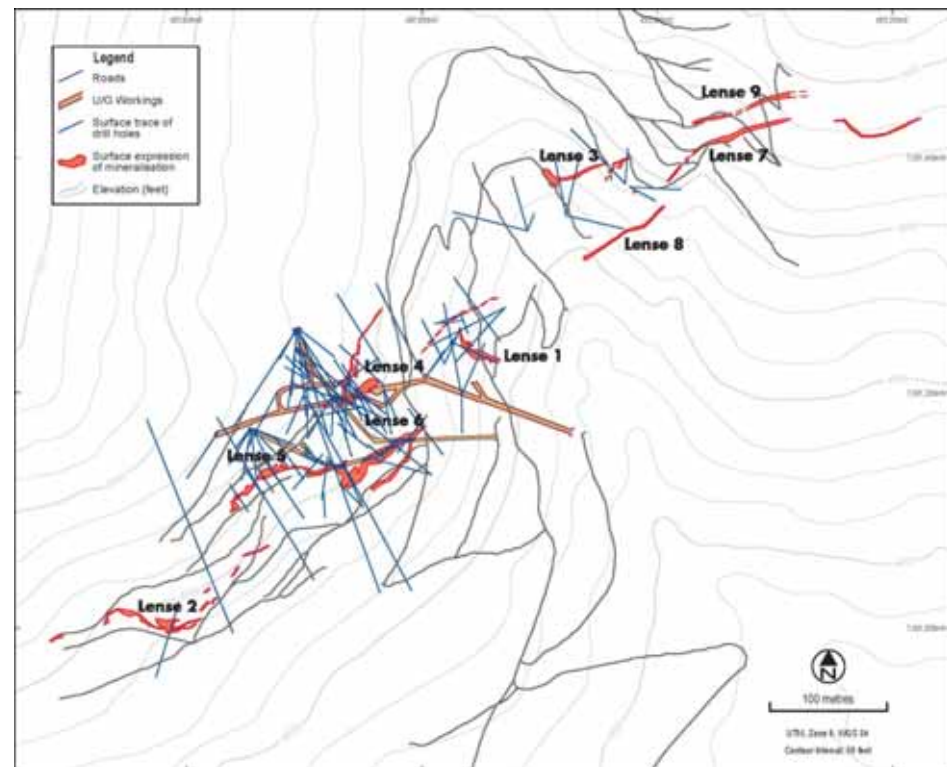
Road access and entries to the historic adit (upper level) and decline (lower level) at the Caribou Dome Copper Project

COMPELLING EARLY DRILL RESULTS

- Only 112 diamond core holes drilled for 8,360m over 50 years
- Average hole depth of 75m
- Majority of holes drilled were to test Lenses 4, 5 and 6

Better results include:

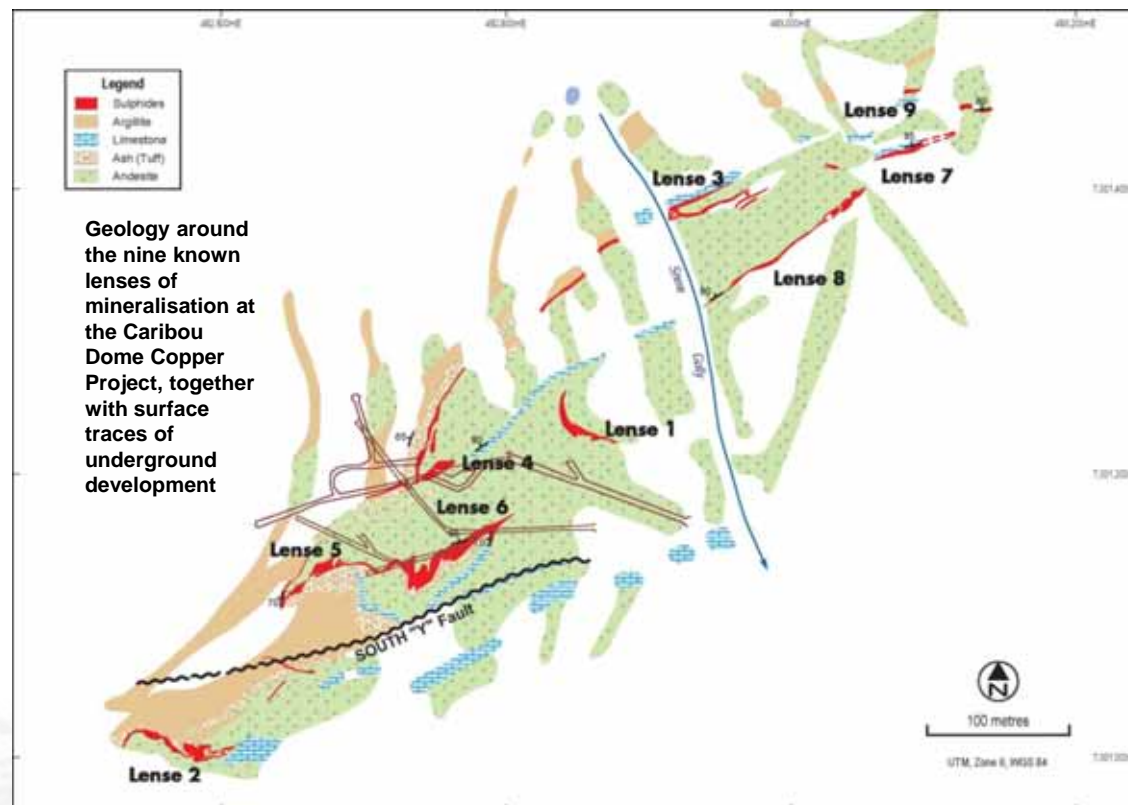
- 18.1m at 9.34% Cu from 22.7m
- 18.4m at 6.25% Cu from 31.4m
- 15.4m at 7.01% Cu (U/G drill hole)
- 13.1m at 7.20% Cu from 15.8m
- 11.0m at 8.20% Cu from 29.0m
- 10.4m at 7.94% Cu from 14.0m
- 12.8m at 5.78% Cu (U/G drill hole)
- 13.0m at 4.94% Cu (U/G drill hole)
- 9.1m at 6.97% Cu from 28.7m
- 10.2m at 6.23% Cu from 46.6m
- 12.2m at 5.04% Cu from 27.1m
- 10.7m at 4.99% Cu from 18.0m
- 10.2m at 4.96% Cu (U/G drill hole)
- 8.3m at 6.07% Cu from 77.7m



Location of the nine known lenses of mineralisation at the Caribou Dome Copper Project, together with surface traces of diamond drill holes and underground development

KNOWN GEOLOGY

- 9 known lenses of outcropping stratiform mineralisation identified to date over ~750 metres of strike
- Lenses predominantly located in argillites at interface with volcanics; interbedded limestones appear to have been important
- Only 3 lenses (4, 5 and 6) have been subject to systematic drilling

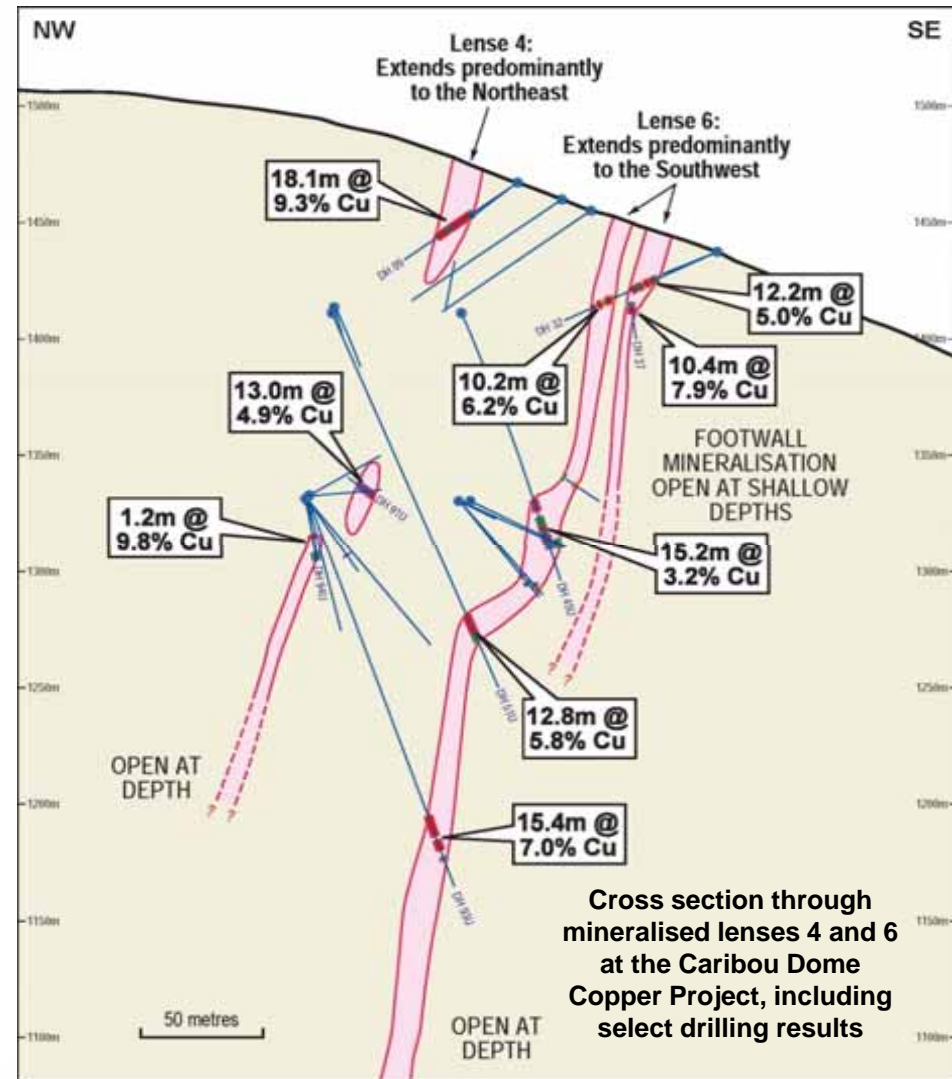


CROSS SECTION – LENSES 4 AND 6

- Sub-vertical mineralisation
- Excellent grade and thickness
- Extends to >250m depth so far

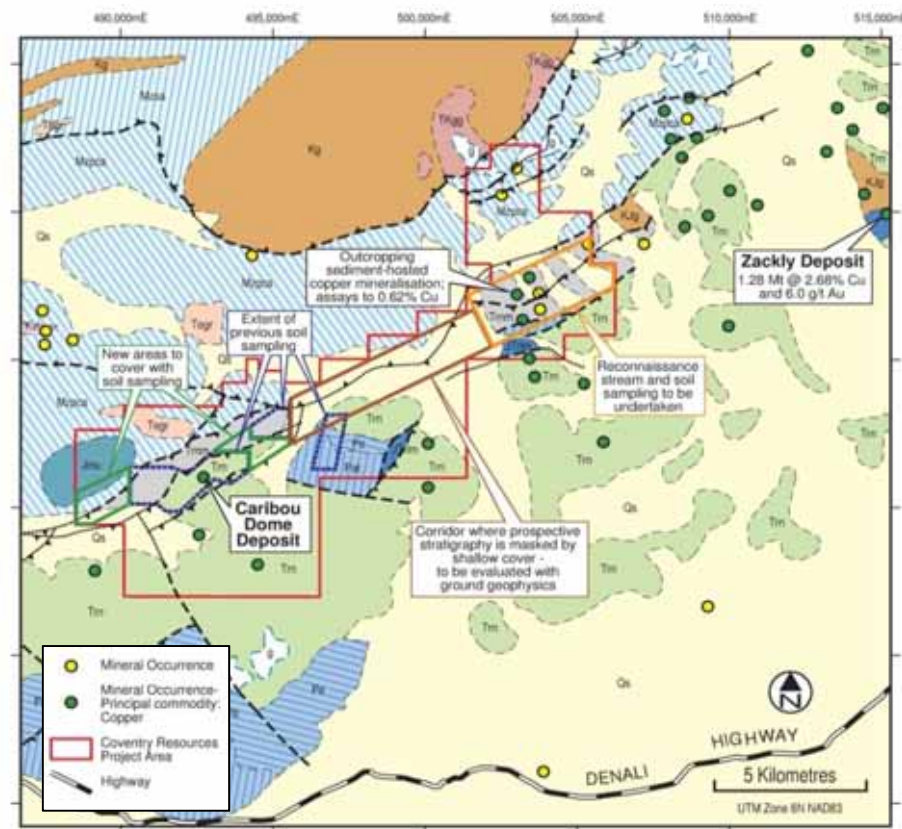
REMAINS OPEN:

- into the footwall
- along strike
- at depth



EXCEPTIONAL EXPLORATION UPSIDE

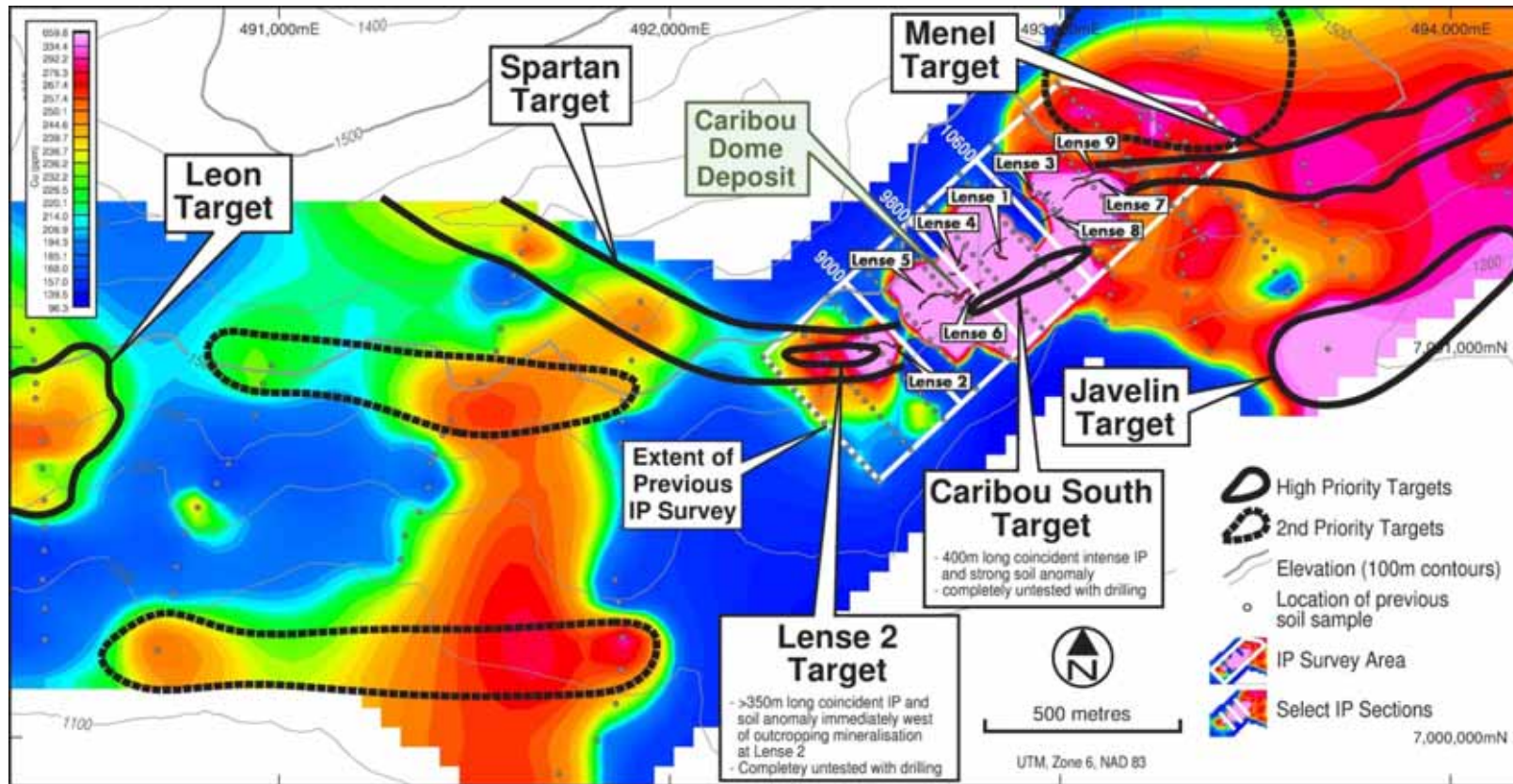
- Mineralisation is stratiform – located at the contact of volcanic and sedimentary rocks
- Contact has been mapped over >15km within the Project area
- Visible outcrops of sediment-hosted copper mineralisation occur along this 15km contact
- All previous drilling was constrained within a 750m-long corridor
- Strike extensions of known mineralisation have never been trenched or drilled
- Numerous extensive soil anomalies are evident over 3.5km of previously sampled strike



Regional geology at the Caribou Dome Copper Project, showing the argillite sequence that hosts the known mineralisation extends for more than 15km within the Project area

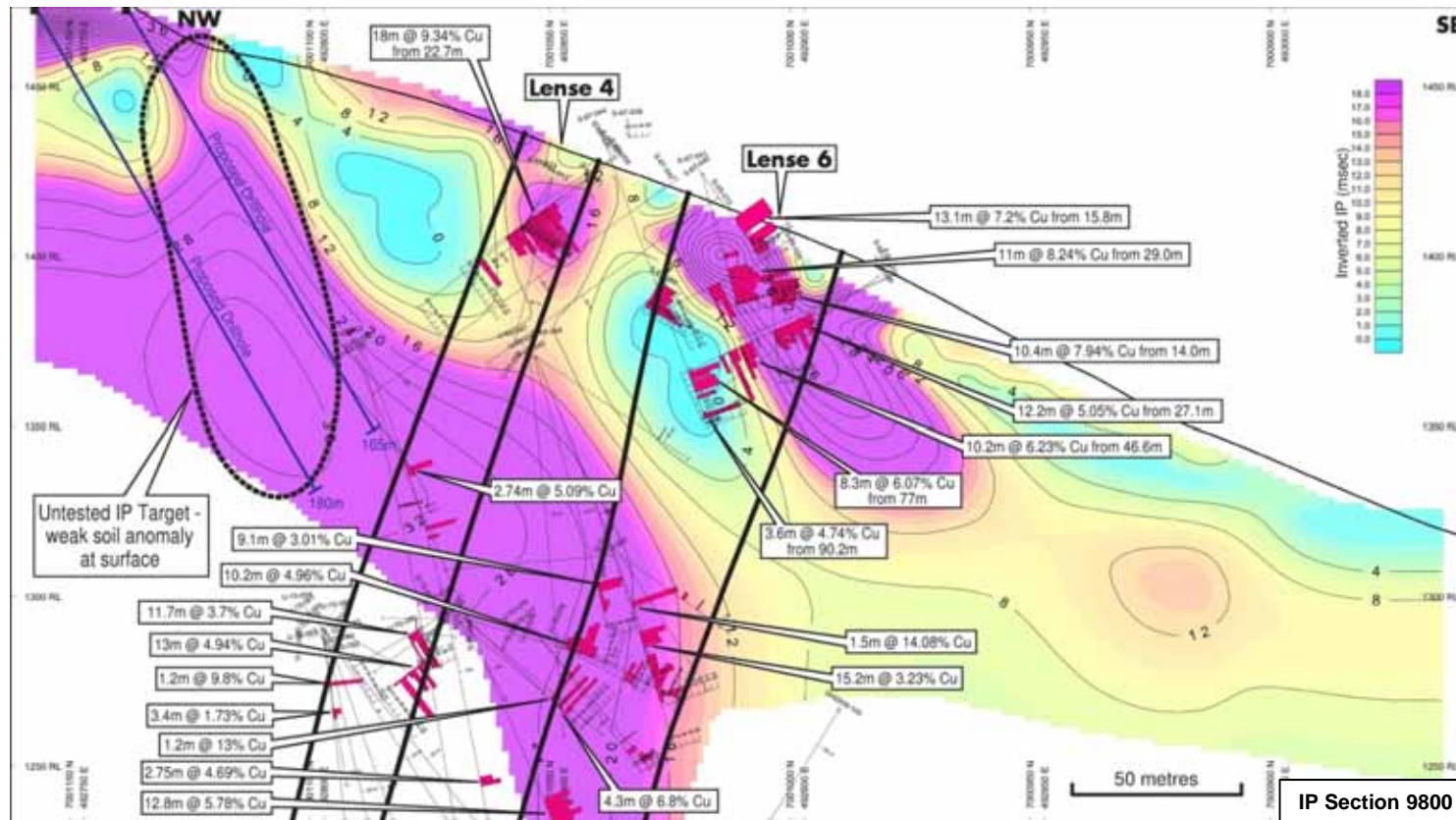
Abundant drill-ready targets

MULTIPLE EXTENSION TARGETS



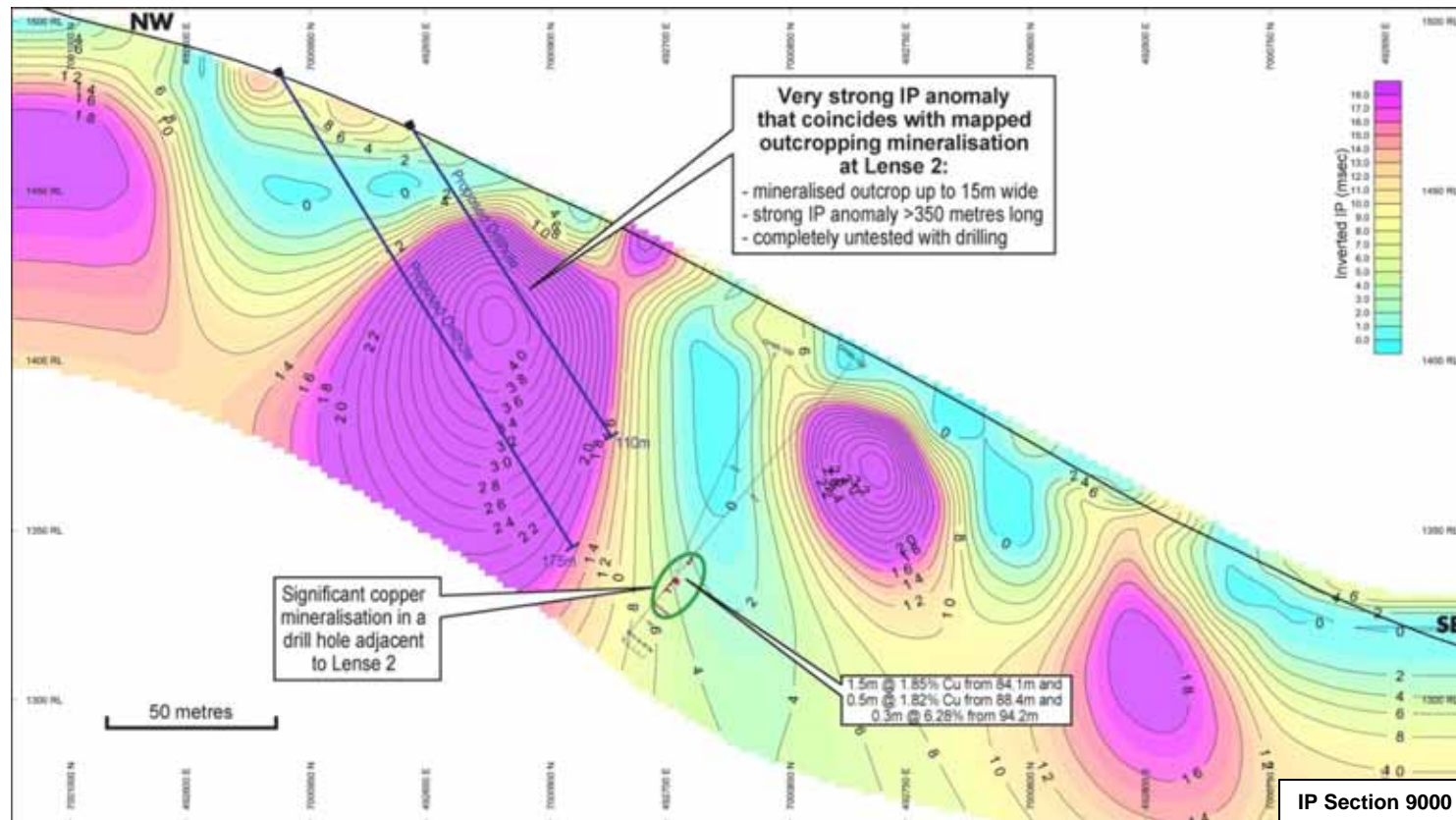
- Historic exploration data reviewed
- Two exceptional drill targets for immediate follow-up identified at Lense 2 and Caribou South
- Additional drilling warranted to test strike and depth extensions of all 9 mineralised lenses
- Numerous extensive soil anomalies over 3.5km warrant further exploration

I.P. – A VERY EFFECTIVE PREDICTOR



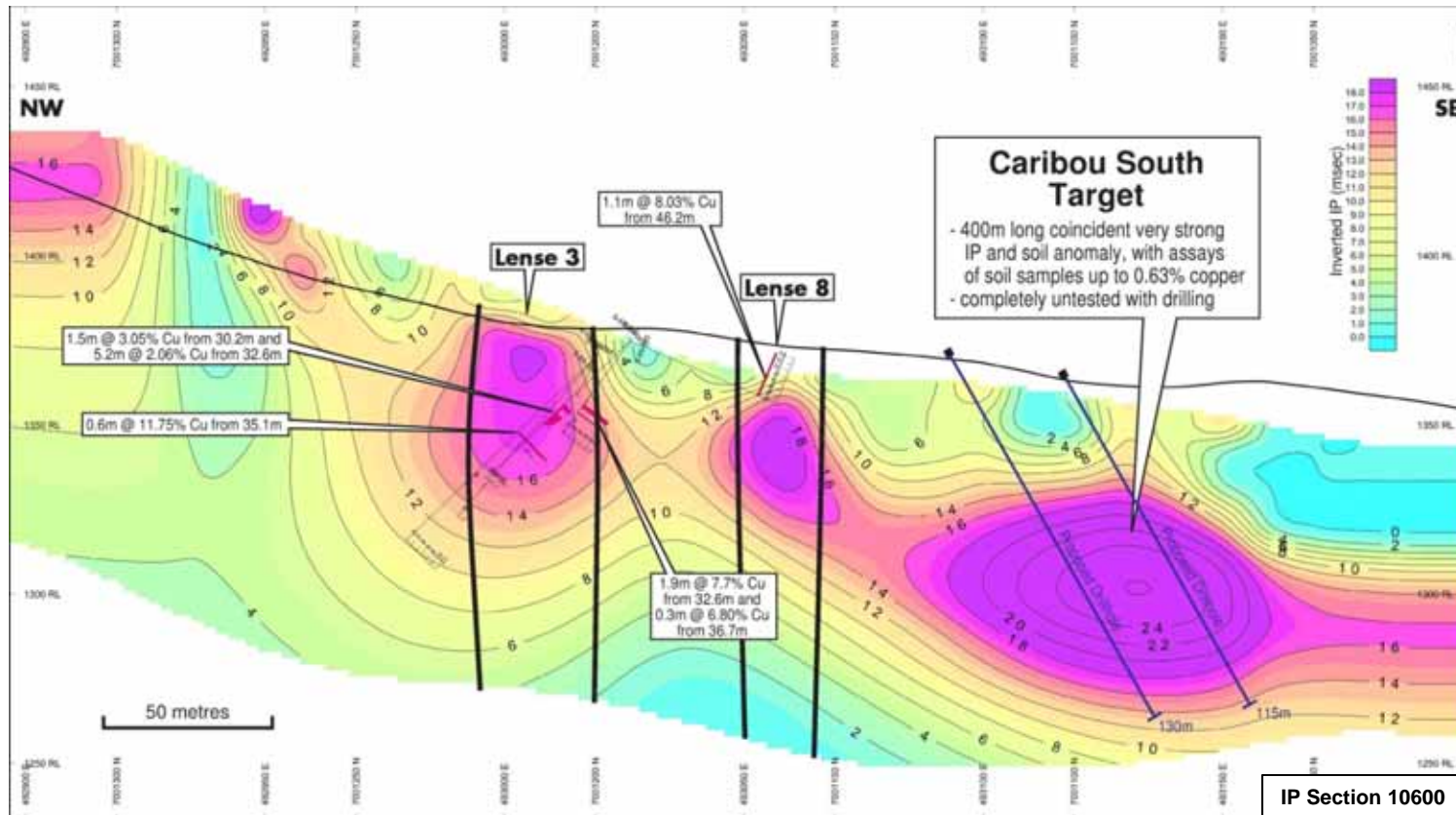
- 1,000m x 400m area surveyed with IP in 1999
- New management re-processed all data early 2015
- Known mineralisation closely coincides with distinct IP anomalies, so further use of electrical geophysics will be very useful, particularly in areas covered/masked by tundra

VERY HIGH PRIORITY DRILL TARGET - LENSE 2



- Outcropping mineralisation is up to 15m wide and extends for >200m
- Coincident 350m long high-level IP anomaly
- 600m - long magnetic anomaly also coincides with outcropping mineralisation
- Completely untested with drilling

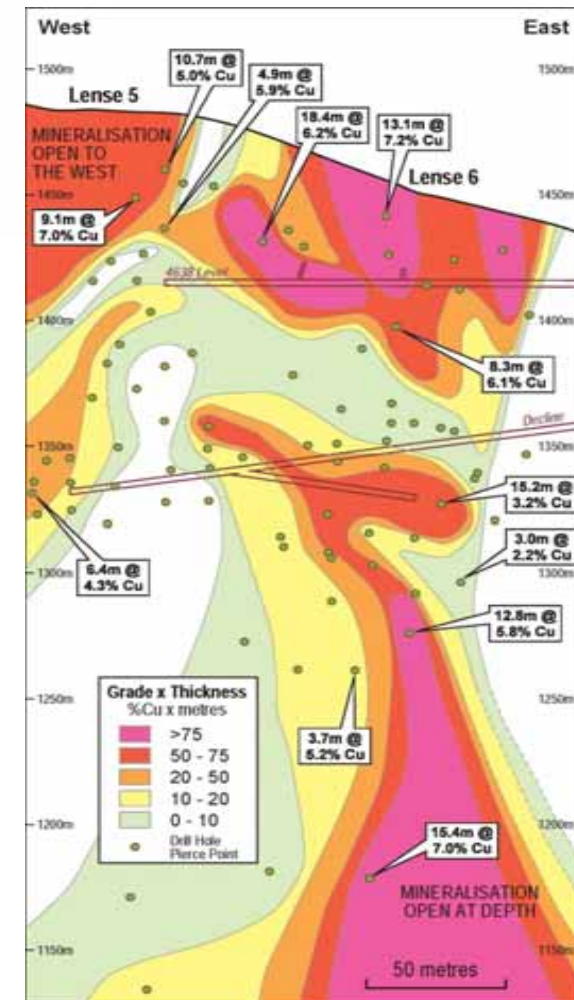
VERY HIGH PRIORITY DRILL TARGET - CARIBOU SOUTH



- 400m long soil geochemistry anomaly, with assays to 0.63% copper in soils
- Coincident 400m long very strong IP anomaly
- Completely untested with drilling

OBVIOUS EXTENSIONS OF KNOWN MINERALISED LENSES

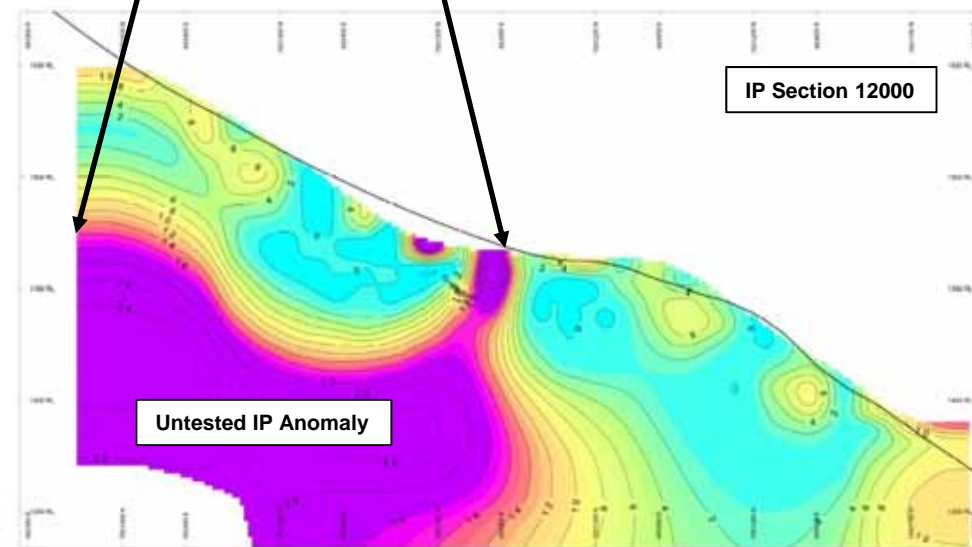
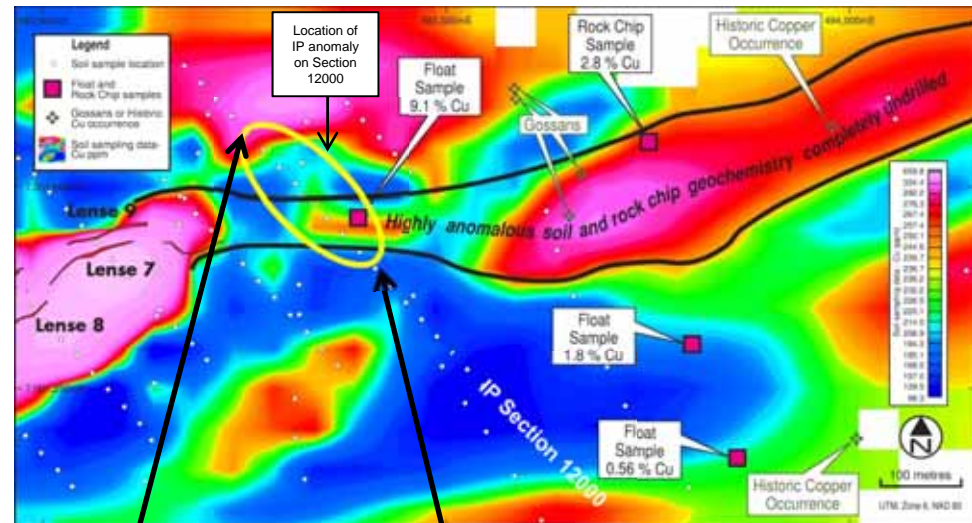
- **9 Mineralised lenses**
- **All mineralisation remains open at depth and along strike**
eg, **Lense 5, shallow mineralisation, incl. intercepts of:**
 - 9.1m at 7.0% copper from 28.7m, and
 - 10.7m at 5.0% copper from 18.0m and remains open to the west
- eg, **Lense 6, where the deepest mineralised intercept of:**
 - 15.4m at 7.0% copper (in an underground hole) remains open at depth



Long section through mineralised lenses 5 and 6 at the Caribou Dome Copper Project, including select drilling results

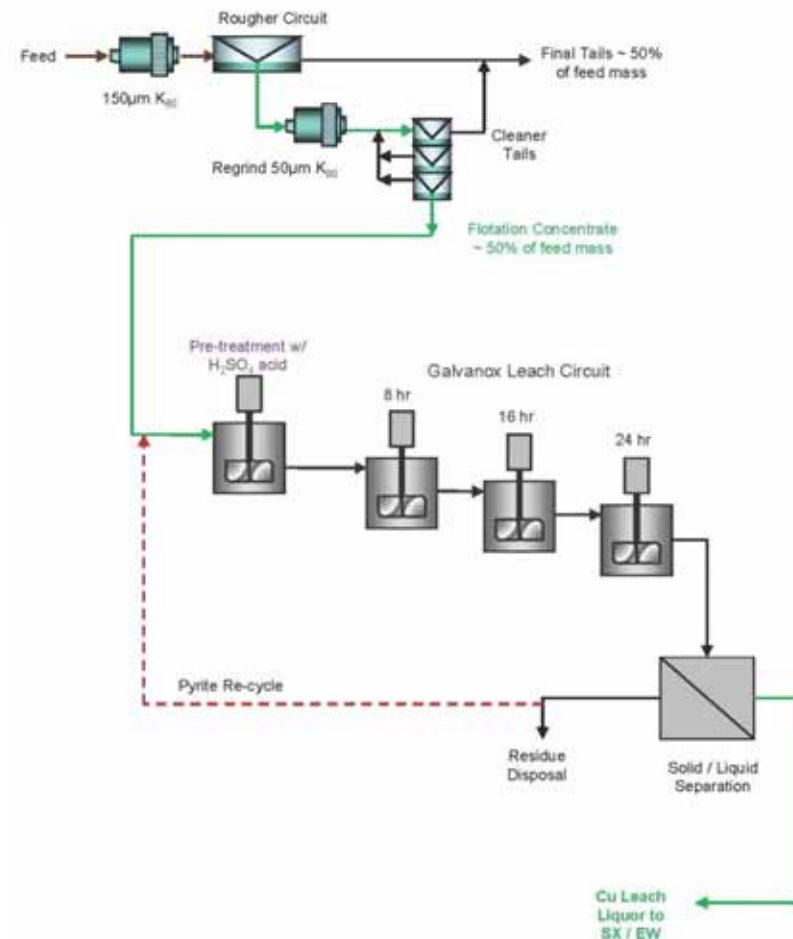
HIGH-PRIORITY EXTENSION TARGET - MENEL TARGET

- 1000m-long anomalous soil geochemistry corridor
- Mineralised rock samples to 9.1% copper; mapped gossans and copper occurrences
- Historic reports suggest tundra may mask/cover bedrock
- Very strong IP anomaly on the eastern-most line of the surveyed area, directly below the 9.1% Cu rock sample
- Completely untested with drilling



POSITIVE INITIAL METALLURGY

- A 225kg bulk sample collected for testing in 2008
- Average sample grade was 6.7% copper
- Recoveries up to 91.7% were achieved with flotation and Galvanox leaching
- Recent advice from consultants that even better recoveries should be achievable when the flowsheet is refined
- Demonstrates that modern processes provide viable processing alternatives



Potential flowsheet for the Caribou Dome Copper Project –
flotation plus Galvanox leach

Kennecott Copper Deposit, Alaska

- 1911-1938: ~4.63Mt ore mined at 13% copper
- Identical style and age of mineralisation
- Hosted by same sequence of rocks as those hosting Caribou Dome
- One of the worlds highest grade historic mines and located only ~ **180 miles from Caribou Dome**

White Pine Mine, Michigan

- 198Mt ore mined at 1.14% copper

Other sediment-hosted copper deposits

- Mt Isa Copper Deposit
- Deposits of the Zambian Copper Belt in Africa



Surface infrastructure at the Kennecott Copper Deposit, Alaska

INITIAL EXPLORATION TARGET

- **Considerable mineralisation already delineated from limited historic drilling**
- **Initial Mineral Resource estimate requires re-drilling some historic holes**
- **Abundant drill-ready exploration and expansionary targets are already evident**
- **Early JORC Resource possible based on past work**



**4630 level adit at the Caribou Dome Copper Project.
Grey material is an ash unit; black is mineralised sediment**

Initial exploration target of 5 - 10Mt of mineralisation at 2.5 - 4.0% copper*

* The potential quantity and grade of this target is conceptual in nature and there has been insufficient exploration completed to define a mineral resource in accordance with Canadian National Instrument 43-101 and the 2012 Edition of the Australasian Code for Reporting of Exploration Results (JORC Code) standards, and it is uncertain if further exploration will result in the target being delineated as a mineral resource. For further information refer to the Company's ASX announcement on 5 November 2014.

FORWARD WORK PROGRAM

Balanced exploration program scheduled for 2015:

- Confirmatory drilling at known mineralisation for initial JORC resource calculations
- Extensional drilling to evaluate new targets
- Ground geophysics (EM/IP/CSAMT)
- Mapping/trenching



Looking NE from outcropping mineralisation at Lense 6 (foreground) to trenching at Lense 3 (background)

	Feb	Mar	Apr	May	June	July	Aug	Sep	Oct
Shareholder Meeting									
Database Compilation/Prioritising Targets									
Capital Raising to Fund Exploration									
Mapping/Trenching/Sampling at New Targets									
Ground Geophysics (EM/IP/CSAMT)									
Diamond Drilling Known Lenses									
Diamond Drilling New Targets									
Analytical Results from Drilling									
Total									

DISCLAIMER



This presentation is not a prospectus nor an offer for securities in any jurisdiction nor a securities recommendation. The information in this presentation is an overview and does not contain all information necessary for investment decisions. In making investment decisions in connection with any acquisition of securities, investor should rely on their own analysis of the Company and consult their own legal and/or financial advisers. The information contained in this presentation has been prepared in good faith by the Company, however no representation or warranty expressed or implied is made as to the accuracy, correctness, completeness or adequacy of any statements, estimates, opinions or other information contained in this presentation. To the maximum extent permitted by law, the Company, its directors, officers, employees and agents disclaim liability for any loss or damage which may be suffered by any person through the use or reliance on anything contained in or omitted from this presentation.

This presentation contains forward looking statements which involve a number of risks and uncertainties. These forward looking statements are expressed in good faith and believed to have a reasonable basis. These statements reflect current expectations, intentions or strategies regarding the future and assumptions based on currently available information. Should one or more risks or uncertainties materialise, or should underlying assumptions prove incorrect, actual results may vary from the expectations, intentions and strategies described in this announcement. The forward looking statements are made as at the date of this announcement and the Company disclaims any intent or obligation to update publicly such forward looking statements, whether as the result of new information, future events or results or otherwise.

Qualified and Competent Person

The information in this announcement that relates to exploration results for the Project has been approved by Mr Ben Vallerine, who is a consultant to the Company and holds an indirect shareholding in the Company. Mr Vallerine has reviewed the exploration results disclosed in this release, but has not verified the information due to the programs having been undertaken by the previous owners of the Project.

Mr Vallerine is a Member of the Australian Institute of Geoscientists. Mr Vallerine has sufficient experience which is relevant to the style of mineralisation and type of deposit under consideration and the activity he is undertaking to qualify as a Competent Person as defined in the 2012 Edition of the Australasian Code for Reporting of Exploration Results (JORC Code). Mr Vallerine is also a Qualified Person as defined by Canadian National Instrument 43-101 Standards of Disclosure for Mineral Projects. Mr Vallerine consents to the inclusion in the report of the matters based on the information in the form and context in which it appears.



ALASKA

APPENDIX 1 – COMMERCIAL TERMS TO ACQUIRE AN 80% INTEREST IN THE CARIBOU DOME COPPER PROJECT



- **Coventry recently acquired 100% of unlisted Australian company Aldevco Pty Ltd, which holds an option to acquire an 80% interest in the Project from unlisted US company Hatcher Resources Inc**
- **Aldevco has a 9-year option to acquire 80% of the Project**
- **Ongoing obligations comprise:**

	Original Vendor Payments ¹	Annual Expenditure Obligation	Minimum Expenditure per 3-year period
June 2015	US\$20,000	US\$100,000	US\$2,000,000
June 2016	US\$30,000	US\$100,000	
June 2017	US\$50,000	US\$100,000	
June 2018	US\$100,000	US\$0	US\$2,000,000
June 2019	US\$100,000	US\$0	
June 2020	US\$100,000	US\$0	
June 2021	US\$100,000	US\$0	US\$2,000,000
June 2022	US\$100,000	US\$0	
June 2023	US\$1,360,000	US\$0	
Total	US\$1,960,000		US\$9,000,000 or Complete Feasibility Study²

¹ Original vendors are C-D Development Corporation and SV Metals LP

² If the Feasibility Study is delivered before expending US\$9million, the earn-in condition will be satisfied

- **One of the original vendors – C-D Development Corporation will retain a 5% royalty, with Coventry having the right to purchase each 1% for US\$1,000,000**



ALASKA