

6 AUGUST 2015

**51.1m\* @ 5.3% COPPER FROM ONLY 4.4m  
SPECTACULAR INTERSECTION AT CARIBOU DOME**

**Fast Facts**

**ASX: CY Y**

CDI price (5 August 2015)	\$0.088
Shares on issue	231.3M
Options	29.2M
Market capitalisation	\$20.3M

**Directors and Management**

**Mark Bojanjac**

*Non-Executive Chairman*

**Michael Haynes**

*Director, President and CEO*

**Ian Cunningham**

*Director, CFO and Company Secretary*

**Robert Boaz**

*Non-Executive Director*

**Michael Fowler**

*Non-Executive Director*

**Contact Details**

**Australian registered office address**

Suite 9, 5 Centro Avenue  
Subiaco WA 6008

Postal Address  
PO Box 457  
West Perth WA 6872

Tel: +61 8 9226 1356  
Fax: +61 8 9226 2027

Email: [info@coventryres.com](mailto:info@coventryres.com)

Website: [www.coventryres.com](http://www.coventryres.com)

Coventry Resources Inc. is a limited liability corporation existing under the laws of British Columbia. Australian Registered Business Number 161615783

**1.0 HIGHLIGHTS**

- Assay results received for three more holes drilled recently at the Caribou Dome Copper Project
- Results include a spectacular intersection of thick, shallow, primary, high-grade copper mineralisation at Lense 4 in CD15-03, that in total comprises:
  - **51.1m\* @ 5.3% Cu from 4.4m, including:**
    - 2.3m @ 17.1% Cu from 4.4m
    - 14.1m @ 10.6% Cu from 10.7m
    - 3.3m @ 9.0% Cu from 39.8m, and
    - 3.2m @ 9.6% Cu from 52.3m
- \*estimated true thickness is ~25m
- Thick copper mineralisation intersected in the first two exploration holes ever drilled that test primary mineralisation beneath 200m of mineralised outcrop at Lense 2 (CD15-04 and CD15-05), with assay results including:
  - **8.7m @ 1.7% Cu from 54.3m, and**
  - **10.0m @ 1.6% Cu from 62.5m**
- New IP data show CD15-04 and CD15-05 have been drilled directly above a strong IP anomaly that will be drill-tested in the near-term
- Ongoing exploration continues as planned, with thirteen drill holes completed to date
- Further assay results from drilling expected in the next 10-14 days

Coventry Resources Inc. (ASX:CYY; "Coventry" or "the Company") is very pleased to announce that assay results have been received for three more drill holes (CD15-03 to CD15-05) it recently completed at the highly prospective high-grade Caribou Dome Copper Project in Alaska, USA (the "Caribou Dome Project" or "the Project").

**2.0 NEW ASSAY RESULTS**

**2.1 Lense 4**

CD15-03 was drilled to evaluate the upper portions of Lense 4 (see Figures 1 and 2). It was drilled beneath, and with a similar orientation to, DH09 (drilled in 1965) that intersected **18.1 metres at 9.34% copper** (see Figure 2). Drill rig access constraints resulted in CD15-03 being drilled in the same direction as the interpreted dip of the

mineralisation in this area. Notwithstanding this, six intervals of semi-massive and massive sulphides were intersected over a combined total of 30.5 metres within a broader envelope of 51.1 metres. Assay results include:

- **51.1m\* @ 5.3% Cu from 4.4m, including:**
  - 2.3m @ 17.1% Cu from 4.4m
  - 14.1m @ 10.6% Cu from 10.7m
  - 5.7m @ 3.6% Cu from 29.7m
  - 3.3m @ 9.0% Cu from 39.8m
  - 1.9m @ 2.9% Cu from 45.0m, and
  - 3.2m @ 9.6% Cu from 52.3m

*The true thickness of this overall mineralised zone is interpreted to be approximately 25 metres (see Figure 1). Notably, the weighted-average grade of the combined 30.5 metres of higher grade mineralisation is 8.6% copper.*

There is some oxidised material in the upper 10 metres of CD15-03, but the vast majority of mineralisation is primary (copper-sulphide) i.e. the high grade nature of the mineralisation **is not** due to supergene enrichment.

*These results provide further confidence in the reliability of the historic Project data and further confirmation that it should be possible to delineate a substantial, high-grade resource.*

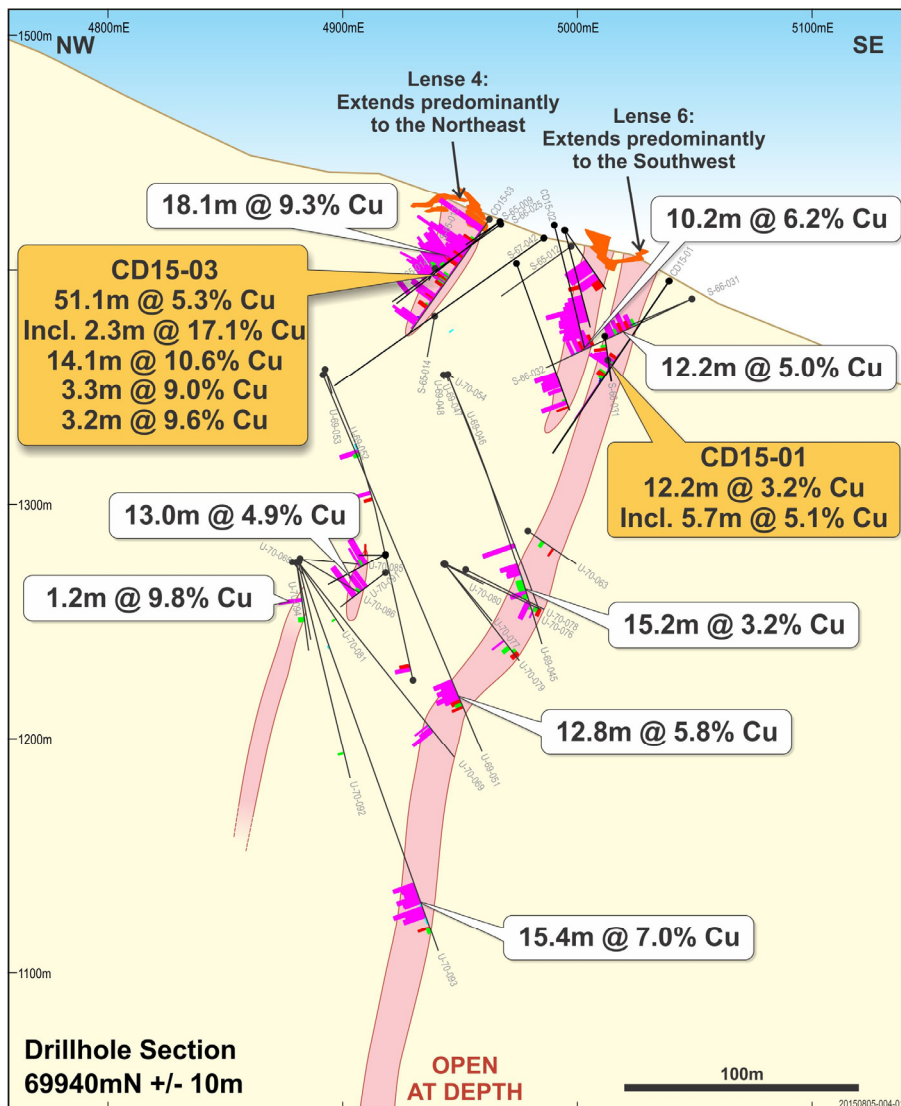
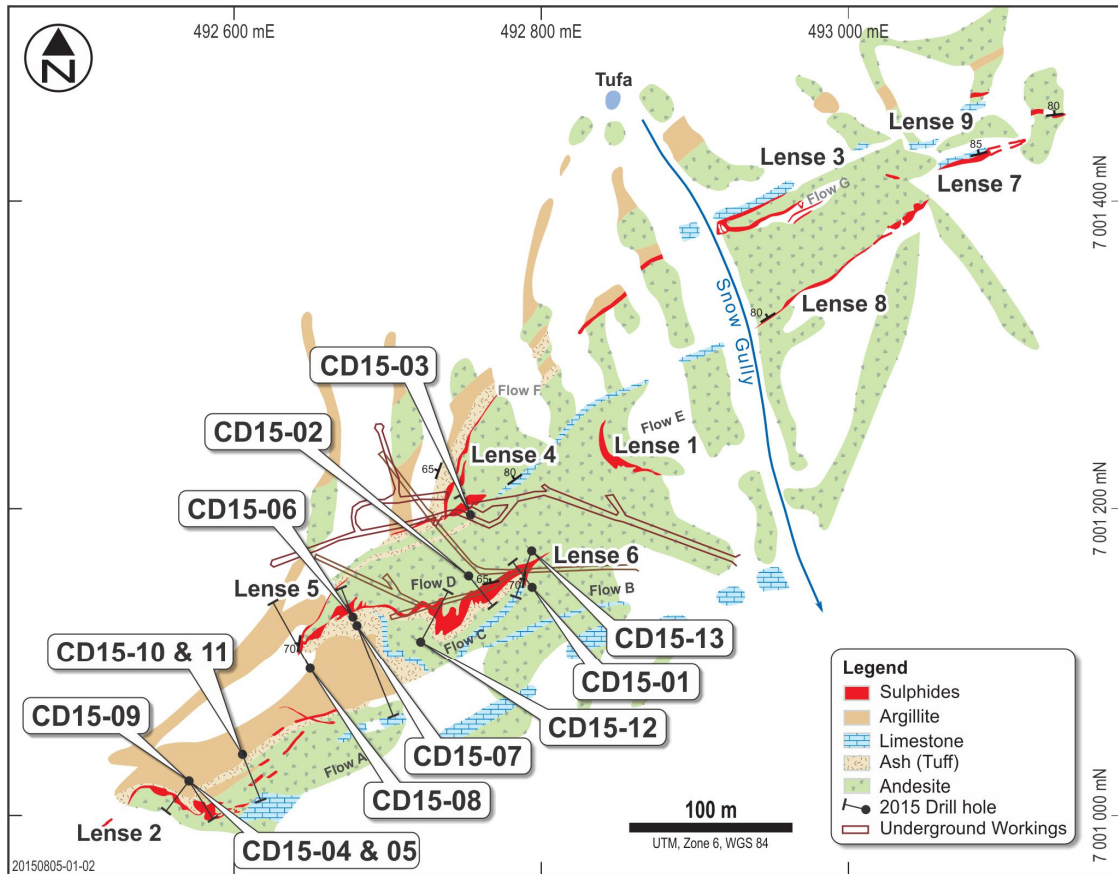


Figure 1. Cross section showing mineralisation in drill hole CD15-03 and other adjacent historic drill holes.

## 2.2 Lense 2

CD15-04 and CD15-05 were new exploration holes drilled to evaluate the central portion of the previously untested Lense 2, which surface mapping indicates is at least 200 metres long (see Figure 2). Both of these holes were collared 140 metres along strike from the closest drill hole that had previously intersected thick mineralisation (in Lense 5).



**Figure 2.** Geology around the nine known lenses of mineralisation at the Caribou Dome Copper Project, together with surface traces of underground development and locations of Coventry's recent drill holes.

Hole CD15-04 was inclined at 55°, and drilled to the southeast (see Figure 3). Assay results show CD15-04 intersected:

- **8.7m @ 1.7% Cu from 54.2m**

Immediately following the intersection of a thick sequence of massive sulphides in argillites (the same sedimentary rocks that host mineralisation elsewhere at the Project) in CD15-04, hole CD15-05 was drilled from the same location, with the hole inclined at 75°, to test for deeper mineralisation and to begin determining the attitude of the mineralisation at Lense 2 to assist further follow-up drilling (see Figure 3).

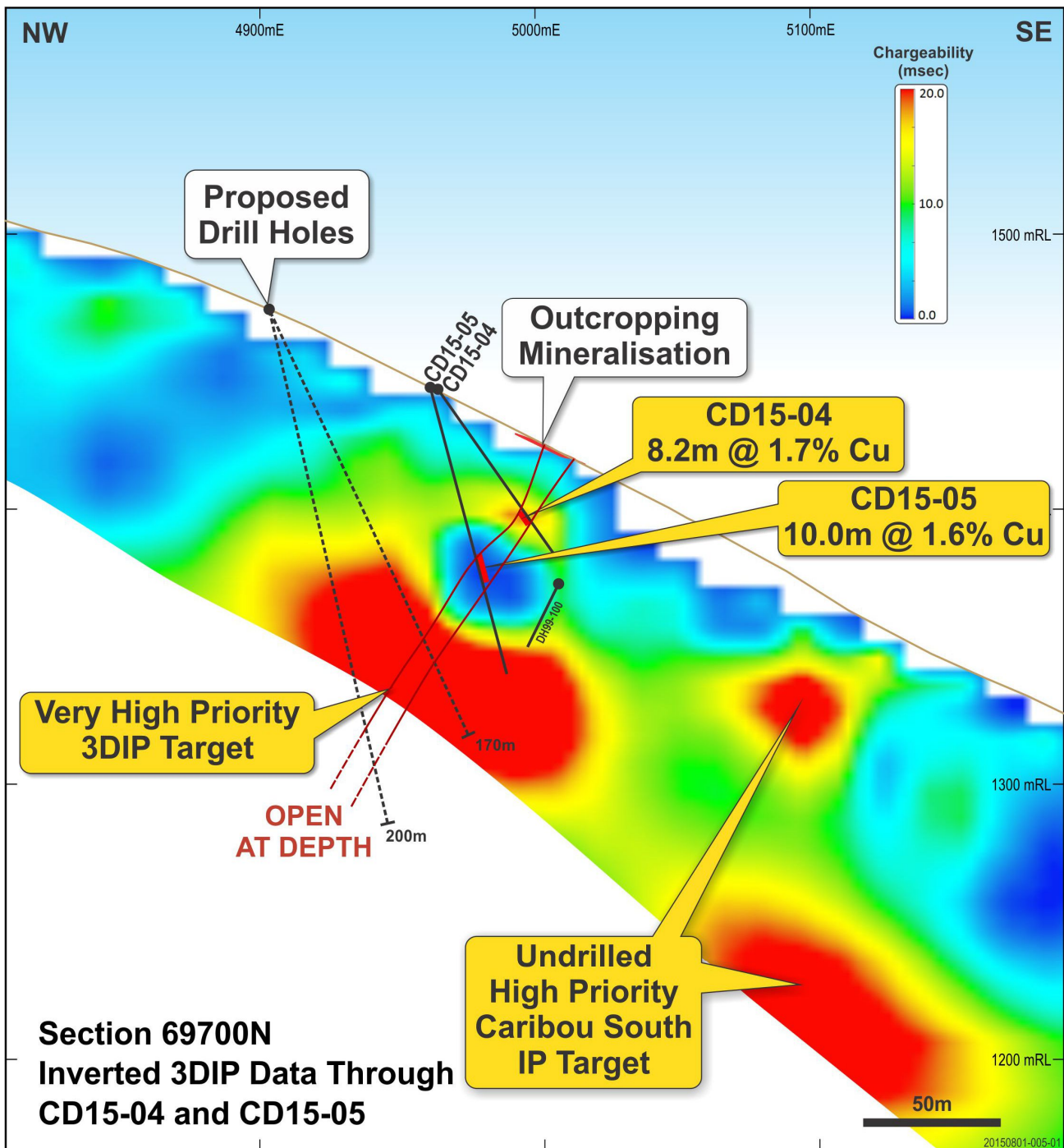
Assay results show CD15-05 intersected:

- **10.0m @ 1.6% Cu from 62.5m**

The results from these two holes are extremely encouraging for several reasons:

- (i) Thick mineralisation at economic grades has been intersected in the first two holes drilled into a sizeable, previously untested, exploration target. **This confirms it is highly likely that additional resources can be delineated at the Project.**

- (ii) New IP data indicates both new drill holes, which were intended to depth-test visible copper in outcrop, **have been drilled immediately above a deeper strong, sizeable IP anomaly**. It has been demonstrated elsewhere at the Project that thick and/or high grade mineralisation often gives rise to strong IP anomalies. Accordingly it is believed that the deeper, as yet untested, IP anomaly, that lies less than 50 metres down-dip from the mineralisation intersected in CD15-05, provides a very-high priority opportunity to delineate additional thick and/or high-grade mineralisation. Accordingly plans are being made to drill several deeper holes beneath CD15-05 in the near term (see Figure 3).



**Figure 3.** Cross section of inverted 3DIP data through the central portion of Lense 2, showing mineralisation intersected in drill holes CD15-04 and CD15-05 together with, as yet untested, strong IP anomalies (i) immediately down-dip of (deeper than) that mineralisation at Lense 2, as well as (ii) parallel and adjacent to Lenses 2 and 6 at the Caribou South Target.

### **3.0 ON-GOING DRILLING PROGRAM**

In early July 2015, Coventry commenced its inaugural drilling program at the Caribou Dome Project to:

- (i) verify the results of previous drilling so that, in due course, historic drilling data (most of which was acquired between 1964 and 1970) can be incorporated into an overall Project mineral resource estimate in accordance with the JORC Code and Canadian National Instrument 43-101; and
- (ii) commence initial exploration to begin to evaluate some of the numerous under-explored targets which provide considerable exploration upside.

Drilling has progressed well, with a total of thirteen holes completed to date.

#### **3.1 Next Assay Results**

Assay results for a further four holes (CD15-06 to CD15-09) drilled to test for extensions of Lenses 2, 5 and 6 (see Figure 2) are expected in the next 10-14 days.

Results for CD15-10 to CD15-13 are expected 7-10 days thereafter.

Previously reported notable visual results in CD15-06 to CD15-11 included:

- CD15-06: intersected approximately 4 metres of semi-massive and massive sulphides (pyrite and chalcopyrite), in the upper portions of Lense 5;
- CD15-09: intersected approximately 4 metres of semi-massive and massive sulphides (pyrite and chalcopyrite) in Lense 2, approximately 30 metres along strike from CD15-04 and CD15-05. These massive sulphides are directly underlain by a strong 3DIP anomaly. It is anticipated that this will be tested with further drilling in the near-term.
- CD15-10: intersected several metres of semi-massive and massive sulphides (pyrite and chalcopyrite) approximately 50 metres along strike from CD15-04 and CD15-05 while testing for extensions of primary mineralisation at Lense 2. A strong 3DIP anomaly is evident beneath the area targeted by this hole, and accordingly a deeper hole, CD15-11, was drilled from the same drill pad as CD15-10 to begin assessing the deeper potential in this area.

#### **3.2 Drilling Completed Since Last Operations Update**

Hole CD15-11 was drilled down dip of CD15-10, to continue initial exploration in the Lense 2 area (see above). Preliminary visual inspection of the drill core indicates:

- CD15-11: Intersected three zones of semi-massive to massive sulphides between 87 and 120 metres depth. Individual mineralised zones are up to 1.7 metres thick.

Initial visual observations of diamond drill core from holes CD15-12 and CD15-13, which were both confirmatory holes drilled to further evaluate the upper portions of Lenses 5 and 6 (see Figure 2) include:

- CD15-12: Intersected approximately 11.5 metres of semi-massive and massive sulphides (pyrite and chalcopyrite), from ~ 30 metres depth, in the upper portions of the region between Lenses 5 and 6;
- CD15-13: Intersected several zones of semi-massive and massive sulphides (pyrite and chalcopyrite), in the upper portions of Lense 6, including 4 metres of tarnished massive sulphides from 5.1 metres and a further 10 metres of semi-massive to massive sulphides from ~30 metres depth.

Diamond drill core from these holes is being systematically logged and sampled. Samples will be submitted to a laboratory for analysis once processed. Assay results are expected 2-3 weeks after sample submittal.

### **4.0 CONCLUSIONS**

The assay results from the first 5 holes the Company has drilled at the Caribou Dome Project have exceeded Coventry's Board's expectations:

- The shallowness, substantial thickness and high-grade of the mineralisation intersected to date greatly enhances the prospects of developing a mining operation at the Project;
- The immediate exploration success at Lense 2 reinforces the Board's strong belief that there are excellent opportunities to rapidly delineate considerable additional resources, both along strike from, and below, previously known mineralisation;
- Recently acquired geophysical data, coupled with initial drilling results, are already enabling the Company to more accurately delineate the evident abundance of high-quality exploration targets. This should expedite resource expansion.

For further information about Coventry Resources Inc., please contact:

**Mike Haynes**  
**President and CEO**  
 +61 8 9226 1356  
[mhaynes@coventryres.com](mailto:mhaynes@coventryres.com)

**Ian Cunningham**  
**Executive Director, CFO and Company Secretary**  
 +61 8 9226 1356  
[icunningham@coventryres.com](mailto:icunningham@coventryres.com)

**Table 1.** Collar details for the drill holes completed to date during the Company's 2015 drilling program.

Name	UTM Easting	UTM Northing	Elevation (m)	Azimuth	Inclination	Total Depth (m)	Significant Intercepts				
							From (m)	To (m)	Length (m)	% Cu	
CD15-01	492800	7001137	1401	302	-55	89.9	39.8	52.0	12.2	3.23	
							<i>Incl.</i>	39.8	45.5	5.7	5.15
CD15-02	492758	7001153	1418	130	-75	53.4	39.0	49.1	10.1	7.09	
CD15-03	492750	7001195	1437	328	-55	59.4	4.4	55.5	51.1	5.29	
							<i>Incl.</i>	4.4	6.7	2.3	17.08
							<i>and</i>	10.7	24.8	14.1	10.60
							<i>and</i>	29.7	35.4	5.7	3.60
							<i>and</i>	39.8	43.1	3.3	9.03
							<i>and</i>	45.0	46.9	1.9	2.87
						52.3	55.5	3.2	9.57		
CD15-04	492559	7001035	1433	130	-55	74.7	54.2	62.9	8.7	1.72	
CD15-05	492559	7001035	1433	130	-75	102.1	62.5	72.5	10.0	1.59	
CD15-06	492688	7001121	1444	327	-45	45.7	Assay results pending				
CD15-07	492691	7001119	1444	140	-55	89.9	Assay results pending				
CD15-08	492658	7001080	1426	140	-45	118.8	Assay results pending				
CD15-09	492557	7001032	1433	200	-75	77.7	Assay results pending				
CD15-10	492590	7001070	1453	150	-55	97.5	Assay results pending				
CD15-11	492590	7001070	1453	150	-75	123.4	Assay results pending				
CD15-12	492725	7001101	1428	TBC	TBC	48.8	Assay results pending				
CD15-13	492810	7001171	1407	TBC	TBC	54.9	Assay results pending				

Note: Within the reported mineralized intervals in CD15-03 and CD15-04, in both holes, there were two separate intervals of 0% core recovery that totaled 1.2 metres per hole. These intervals have been assumed to be mineralized at the average grade of the overall mineralized interval.

## **CARIBOU DOME COPPER PROJECT - BACKGROUND**

Mineralisation was first discovered at the Caribou Dome Copper Project in 1963. Between 1964 and 1970 nine lenses of sediment-hosted copper mineralisation were delineated over approximately 750 metres of strike. Some 95 diamond core holes were drilled during this period from surface and underground, primarily concentrated on just 250 metres of strike. Exceptional results were returned, including:

- **18.1m at 9.34% copper**
- **18.4m at 6.25% copper**
- **15.4m at 7.01% copper**
- **13.1m at 7.20% copper**
- **11.0m at 8.20% copper**
- **10.4m at 7.94% copper**
- **12.8m at 5.78% copper**

Very limited exploration had been undertaken since 1970, until Coventry secured the rights to explore the Project in February 2015. Since then Coventry has compiled all historic technical information, prioritised targets arising, undertaken a ground geophysics (induced polarisation) survey, and commenced a diamond core drilling program. Coventry's initial results have been very promising.

### **Qualified and Competent Person**

The information in this announcement that relates to exploration results for the Project is based on information compiled by Mr Ben Vallerine, who is a consultant to the Company and holds an indirect shareholding in the Company. Mr Vallerine is a Member of the Australian Institute of Geoscientists. Mr Vallerine has sufficient experience which is relevant to the style of mineralisation and type of deposit under consideration and the activity he is undertaking to qualify as a Competent Person as defined in the 2012 Edition of the Australasian Code for Reporting of Exploration Results (JORC Code). Mr Vallerine is also a Qualified Person as defined by Canadian National Instrument 43-101 Standards of Disclosure for Mineral Projects. Mr Vallerine consents to the inclusion in the report of the matters based on the information in the form and context in which it appears.

### **Forward Looking Statements**

This news release may contain "forward-looking statements" and/or "forward-looking information" within the meaning of applicable securities regulations in Canada and the United States (collectively, forward-looking information"). Any forward-looking information contained in this news release is made as of the date of this news release. Except as required under applicable securities legislation, Coventry Resources Inc. ("Coventry") does not intend, and does not assume any obligation, to update this forward-looking information. Forward-looking information includes, but is not limited to, statements with respect to resource project identification and evaluation and expected outcomes. Often, but not always, forward-looking information can be identified by the use of words such as "plans", "expects", "is expected", "budget", "scheduled", "estimates", "forecasts", "intends", "anticipates", or "believes", or the negatives thereof or variations of such words and phrases or statements that certain actions, events or results "may", "could", "would", "might", or "will" be taken, occur or be achieved.

Any forward-looking information contained in this news release is based on certain assumptions that Coventry believes are reasonable, including, that the current price of and demand for mineral commodities will be sustained or will improve, that general business and economic conditions will not change in a material adverse manner, that financing will be available if and when needed on reasonable terms, that supplies, equipment, personnel, permits and local community approval required to conduct Coventry's planned exploration and development activities will be available on reasonable terms and that Coventry will not experience any material accident, labour dispute, or failure of equipment.

However, forward-looking information involves known and unknown risks, uncertainties and other factors which may cause the actual results, performance or achievements of Coventry to be materially different from any future results, performance or



achievements expressed or implied by the forward-looking information. Such factors include, among others, risks and uncertainties relating to the actual results of exploration activities being different than anticipated, cost of labour increasing more than expected, cost of equipment or materials increasing more than expected, fluctuations in the commodity prices, currency fluctuations, risk of accidents, labour disputes and other risks generally associated with mineral exploration and unanticipated delays in obtaining or failing to obtain governmental or community approvals or financing. Although Coventry has attempted to identify important factors that could cause actual actions, events or results to differ materially from those described in forward-looking information, there may be other factors that cause actions, events or results to not be as anticipated, estimated or intended. There can be no assurance that forward-looking information will prove to be accurate, as actual results and future events could differ materially from those anticipated in such statements. Readers are cautioned not to place undue reliance on forward-looking information due to the inherent uncertainty thereof.

**APPENDIX 1 –**

**JORC CODE 2012 EDITION, TABLE 1 REPORT**

**JORC Code, 2012 Edition – Table 1**

**Section 1: Sampling Techniques and Data**

(Criteria in this section applies to all succeeding sections)

Criteria	JORC Code Explanation	Commentary
Sampling Techniques	<ul style="list-style-type: none"> <li>• Nature and quality of sampling (e.g. cut channels, random chips, or specific specialised industry standard measurement tools appropriate to the minerals under investigation, such as downhole gamma sondes, or handheld XRF instruments, etc.). These examples should not be taken as limiting the broad meaning of sampling.</li> <li>• Include reference to measures taken to ensure sample representivity and the appropriate calibration of any measurement tools or systems used.</li> <li>• Aspects of the determination of mineralisation that are Material to the Public Report.</li> <li>• In cases where ‘industry standard’ work has been done, this would be relatively simple (e.g. ‘reverse circulation drilling was used to obtain 1 m samples from which 3 kg was pulverised to produce a 30 g charge for fire assay’). In other cases, more explanation may be required, such as where there is coarse gold that has inherent sampling problems. Unusual commodities or mineralisation types (e.g. submarine nodules) may warrant disclosure of detailed information</li> </ul>	<ul style="list-style-type: none"> <li>• Core was sawn in half to provide a geologically representative sample for analysis by a professional laboratory</li> <li>• Sample intervals were selected by a qualified geologist upon visual inspection of the core.</li> <li>• Samples were submitted to ALS Laboratories in Fairbanks, Alaska.</li> <li>• Sample were analysed using an aqua regia digestion and ICP-MS multi-element analysis.</li> <li>• Samples containing +1% Cu were automatically re-analysed with an aqua regia digestion and an ore grade analysis using an ICP-AES finish to more accurately determine the high grade Cu assays.</li> </ul>

Criteria	JORC Code Explanation	Commentary
Drilling Techniques	<ul style="list-style-type: none"> <li>• Drill type (e.g. core, reverse circulation, open-hole hammer, rotary air blast, auger, Bangka, sonic, etc.) and details (e.g. core diameter, triple or standard tube, depth of diamond tails, face-sampling bit or other type, whether core is oriented and if so, by what method, etc.).</li> </ul>	<ul style="list-style-type: none"> <li>• A wireline core drilling rig was used to drill HQ core with a diameter of 63.5mm using a standard tube.</li> <li>• Downhole surveys were completed using a Ranger Discoverer survey tool.</li> <li>• Core is oriented by the drillers at the rig each run using the Fordia, Corient tool.</li> </ul>
Drill Sample Recovery	<ul style="list-style-type: none"> <li>• Method of recording and assessing core and chip sample recoveries and results assessed.</li> <li>• Measures taken to maximise sample recovery and ensure representative nature of the samples.</li> <li>• Whether a relationship exists between sample recovery and grade and whether sample bias may have occurred due to preferential loss/gain of fine/coarse material</li> </ul>	<ul style="list-style-type: none"> <li>• Drillers record the drilled length and recovered length of core for each run on their run sheets. Geologists also measure and calculate recovery as a percentage drilled.</li> <li>• HQ core was drilled to maximize recovery.</li> <li>• Competent, experienced drillers were engaged.</li> </ul>
Logging	<ul style="list-style-type: none"> <li>• Whether core and chip samples have been geologically and geotechnically logged to a level of detail to support appropriate Mineral Resource estimation, mining studies and metallurgical studies.</li> <li>• Whether logging is qualitative or quantitative in nature. Core (or costean, channel, etc.) photography.</li> <li>• The total length and percentage of the relevant intersections logged</li> </ul>	<ul style="list-style-type: none"> <li>• Core is geologically and geotechnically logged by qualified geologists. Where possible structural angles are measured for later interpretation.</li> <li>• Core is qualitatively logged and all trays are photographed.</li> </ul>

Criteria	JORC Code Explanation	Commentary
Sub-Sampling techniques and sample preparation	<ul style="list-style-type: none"> <li>• If core, whether cut or sawn and whether quarter, half or all core taken.</li> <li>• If non-core, whether riffled, tube sampled, rotary split, etc. and whether sampled wet or dry.</li> <li>• For all sample types, the nature, quality and appropriateness of the sample preparation technique.</li> <li>• Quality control procedures adopted for all sub-sampling stages to maximise representivity of samples.</li> <li>• Measures taken to ensure that the sampling is representative of the in situ material collected, including for instance results for field duplicate/second-half sampling.</li> <li>• Whether sample sizes are appropriate to the grain size of the material being sampled.</li> </ul>	<ul style="list-style-type: none"> <li>• Core is cut in half, with half retained in the core box and the other half submitted for analysis. When duplicates are required this was noted on the sample dispatch. The half core sent for assay was split at the crushing stage by the laboratory and run as two separate samples. The geologists had, at the time of sample submission, assigned a sample number and provided a labelled sample bag for the duplicate split.</li> <li>• The sample preparation technique is industry standard. HQ core is used and therefore provides a larger sample than more commonly used smaller diameter core.</li> <li>• Duplicates, blanks and Certified Reference Materials (or standards) have been inserted approximately every 30 samples as an external quality control on the laboratory.</li> <li>• Half HQ core is an appropriate sampling methodology for the mineralised material.</li> </ul>
Quality of assay data and laboratory tests	<ul style="list-style-type: none"> <li>• The nature, quality and appropriateness of the assaying and laboratory procedures used and whether the technique is considered partial or total.</li> <li>• For geophysical tools, spectrometers, handheld XRF instruments, etc., the parameters used in determining the analysis including instrument make and model, reading times, calibrations factors applied and their derivation, etc.</li> <li>• Nature of quality control procedures adopted (e.g. standards, blanks, duplicates, external laboratory checks) and whether acceptable levels of accuracy (i.e. lack of bias) and precision have been established</li> </ul>	<ul style="list-style-type: none"> <li>• Samples have been submitted to ALS Laboratories in Fairbanks, Alaska, a globally recognized analytical laboratory.</li> <li>• Duplicates, blanks and Certified Reference materials were inserted approximately every 30 samples as an external quality control on the laboratory.</li> <li>• The laboratory has its own internal duplicates, standards and blanks process that is assessed before they release results to their clients.</li> </ul>

Criteria	JORC Code Explanation	Commentary
Verification of sampling and assaying	<ul style="list-style-type: none"> <li>• The verification of significant intersections by either independent or alternative company personnel.</li> <li>• The use of twinned holes.</li> <li>• Documentation of primary data, data entry procedures, data verification, data storage (physical and electronic) protocols.</li> <li>• Discuss any adjustment to assay data</li> </ul>	<ul style="list-style-type: none"> <li>• The competent person has reviewed the intersections quoted.</li> <li>• Twinned holes have recently been used to validate historical drill results as per this announcement, however there have been no twin holes drilled to verify results in recent holes.</li> <li>• Geological practices are documented by the competent person.</li> <li>• There are no adjustments to be made to assay data.</li> </ul>
Location of data points	<ul style="list-style-type: none"> <li>• Accuracy and quality of surveys used to locate drillholes (collar and down-hole surveys), trenches, mine workings and other locations used in Mineral Resource estimation.</li> <li>• Specification of the grid system used.</li> <li>• Quality and adequacy of topographic control.</li> </ul>	<ul style="list-style-type: none"> <li>• Handheld GPS was used to locate the position and elevation of drill collars in UTM, NAD83. A local grid is also used to display drilling data on sections.</li> <li>• Locational accuracy is considered adequate for the purpose of this announcement.</li> </ul>
Data Spacing and distribution	<ul style="list-style-type: none"> <li>• Data spacing for reporting of Exploration Results.</li> <li>• Whether the data spacing and distribution is sufficient to establish the degree of geological and grade continuity appropriate for the Mineral Resource and Ore Reserve estimation procedure(s) and classifications applied.</li> <li>• Whether sample compositing has been applied.</li> </ul>	<ul style="list-style-type: none"> <li>• As we are simply reporting exploration results data spacing is not relevant at this stage. Maps and diagrams show the distribution of the completed holes.</li> <li>• No sample compositing has been applied at this stage.</li> <li>• Results are reported as significant intercepts.</li> </ul>
Orientation of data in relation to geological structure	<ul style="list-style-type: none"> <li>• Whether the orientation of sampling achieves unbiased sampling of possible structures and the extent to which this is known, considering the deposit type.</li> <li>• If the relationship between the drilling orientation and the orientation of key mineralised structures is considered to have introduced a sampling bias, this should be assessed and reported if material.</li> </ul>	<ul style="list-style-type: none"> <li>• The orientation of sampling is conducted in accordance with industry best practices.</li> <li>• Some of the holes are drilled in an orientation that may not represent true thickness. These orientations were necessary to twin holes and/or due to the restraints of topography and underground infrastructure. Holes drilled in such a way are described in the body of the announcement.</li> </ul>

Criteria	JORC Code Explanation	Commentary
Sample Security	<ul style="list-style-type: none"> <li>The measures taken to ensure sample security</li> </ul>	<ul style="list-style-type: none"> <li>Samples were managed by Company representatives until they were handed to a professional courier service for delivery to the laboratory. Samples were stored in polyweave bags and cable tied for security.</li> </ul>
Audits or reviews	<ul style="list-style-type: none"> <li>The results of any audits or reviews of sampling techniques and data</li> </ul>	<ul style="list-style-type: none"> <li>The competent person has reviewed and assisted in the design implementation of all drill sampling techniques.</li> </ul>

## Section 2: Reporting of Exploration Results

(Criteria listed in section 1 also apply to this section)

Criteria	JORC Code Explanation	Commentary
Mineral tenement and land tenure status	<ul style="list-style-type: none"> <li>Type, reference name/number, location and ownership including agreements or material issues with third parties such as joint ventures, partnerships, overriding royalties, native title interests, historical sites, wilderness or national park and environmental settings.</li> <li>The security of the tenure held at the time of reporting along with any known impediments to obtaining a licence to operate in the area</li> </ul>	<ul style="list-style-type: none"> <li>When undertaking due diligence on the Project during 2014, an Alaskan law firm confirmed that the Alaskan State Mining Claims (tenements) are in good standing.</li> <li>During October 2014 the annual renewal fees for all of the Claims were paid, well in advance of the 1 December 2014 renewal deadline. This ensures they are all in good standing until 1 September 2015.</li> <li>The Company controls 80% of the Claims via option agreements with Hatcher Resources Inc. and SV Metals LP.</li> <li>The operations are permitted by Alaska Department of Natural Resources.</li> </ul>
Exploration done by other parties	<ul style="list-style-type: none"> <li>Acknowledgment and appraisal of exploration by other parties.</li> </ul>	<ul style="list-style-type: none"> <li>The site has been explored intermittently since discovery in 1963. There are 112 historic drill holes on the project, 2 exploration adits and numerous geophysical and geochemical surveys.</li> </ul>
Geology	<ul style="list-style-type: none"> <li>Deposit type, geological setting and style of mineralisation</li> </ul>	<ul style="list-style-type: none"> <li>The deposit is a sedimentary hosted copper deposit, where sulphides are interpreted to have precipitated in a basinal environment, and to have been and to have been deposited contemporaneously with the sediments.</li> </ul>

Criteria	JORC Code Explanation	Commentary
Drillhole Information	<ul style="list-style-type: none"> <li>• A summary of all information material to the understanding of the exploration results including a tabulation of the following information for all Material drillholes:               <ul style="list-style-type: none"> <li>• easting and northing of the drillhole collar</li> <li>• elevation or RL (Reduced Level elevation above sea level in metres) of the drillhole collar</li> <li>• dip and azimuth of the hole</li> <li>• downhole length and interception depth</li> <li>• hole length.</li> </ul> </li> <li>• If the exclusion of this information is justified on the basis that the information is not Material and this exclusion does not detract from the understanding of the report, the Competent Person should clearly explain why this is the case</li> </ul>	<ul style="list-style-type: none"> <li>• A table of the holes completed is included in the body of the announcement.</li> </ul>
Data aggregation methods	<ul style="list-style-type: none"> <li>• In reporting Exploration Results, weighting averaging techniques, maximum and/or minimum grade truncations (e.g. cutting of high grades) and cut-off grades are usually Material and should be stated.</li> <li>• Where aggregate intercepts incorporate short lengths of high grade results and longer lengths of low grade results, the procedure used for such aggregation should be stated and some typical examples of such aggregations should be shown in detail.</li> <li>• The assumptions used for any reporting of metal equivalent values should be clearly stated</li> </ul>	<ul style="list-style-type: none"> <li>• Exploration results have been reported on a weighted average basis.</li> <li>• No top cut has been applied and is not deemed necessary due to consistent high grades.</li> <li>• The amount of internal subgrade included in significant intercepts was kept to a minimum and alternative significant intercepts were provided.</li> </ul>

Criteria	JORC Code Explanation	Commentary
Relationship between mineralisation widths and intercept lengths	<ul style="list-style-type: none"> <li>• These relationships are particularly important in the reporting of Exploration Results.</li> <li>• If the geometry of the mineralisation with respect to the drillhole angle is known, its nature should be reported.</li> <li>• If it is not known and only the downhole lengths are reported, there should be a clear statement to this effect (e.g. 'down hole length, true width not known').</li> </ul>	<ul style="list-style-type: none"> <li>• Where possible drilling was conducted perpendicular to the interpreted dip and strike of the deposit. This was not always possible, due to (i) the deposit's dip and strike being unknown and/or (ii) topographic constraints.</li> <li>• This is addressed in the body of the announcement.</li> </ul>
Diagrams	<ul style="list-style-type: none"> <li>• Appropriate maps and sections (with scales) and tabulations of intercepts should be included for any significant discovery being reported. These should include, but not be limited to a plan view of drillhole collar locations and appropriate sectional views</li> </ul>	<ul style="list-style-type: none"> <li>• Diagrams, sections and tables showing the location of intercepts are included in the body of the announcement.</li> <li>• The significant intercepts for all assay data received are included in the body of the announcement.</li> </ul>
Balanced reporting	<ul style="list-style-type: none"> <li>• Where comprehensive reporting of all Exploration Results is not practicable, representative reporting of both low and high grades and/or widths should be practiced to avoid misleading reporting of Exploration Results</li> </ul>	<ul style="list-style-type: none"> <li>• All significant results are reported.</li> </ul>
Other substantive exploration data	<ul style="list-style-type: none"> <li>• Other exploration data, if meaningful and material, should be reported including (but not limited to) geological observations; geophysical survey results; geochemical survey results; bulk samples – size and method of treatment; metallurgical test results; bulk density, groundwater, geotechnical and rock characteristics; potential deleterious or contaminating substances.</li> </ul>	<ul style="list-style-type: none"> <li>• This announcement is reporting on both the assay results received to date and some geological and visual representations of the core for which assays are yet to be received.</li> </ul>

Criteria	JORC Code Explanation	Commentary
Further Work	<ul style="list-style-type: none"> <li>• The nature and scale of planned further work (e.g. tests for lateral extensions or depth extensions or large-scale step-out drilling).</li> <li>• Diagrams clearly highlighting the areas of possible extensions, including the main geological interpretations and future drilling areas, provided this information is not commercially sensitive.</li> </ul>	<ul style="list-style-type: none"> <li>• The drill program is continuing and other assay results are still pending.</li> <li>• Initially, future drilling will be focused on the lateral and depth extensions of the known and mapped mineralized lenses.</li> <li>• A recent 3DIP survey has generated multiple new targets that have previously been outlined in plan and section. These will be systematically followed up in conjunction with drilling and further exploration.</li> </ul>