



ALASKA

ADVANCING THE HIGH-GRADE CARIBOU DOME COPPER PROJECT

GENERAL MEETING OF SHAREHOLDERS - 28 JULY 2016



CORPORATE STRUCTURE



Coventry Securities	Number
Shares on issue (ASX:CYY)	403.4M
Options (exercisable A\$0.014 – C\$0.05)	28.8M
6 month share price range	1.8 – 6.2c
Market capitalisation (at \$0.052/share)	A\$21.0M

Major Shareholders	%
Board and Management	12.7%
Lowell Resources Fund	5.6%
Ruffer Gold Fund	5.3%
Top 20	48.3%

Board of Directors	
Mark Bojanjac	Non-Exec. Chairman
Mike Haynes	Managing Director/CEO
Ian Cunningham	Director/CFO/Company Secretary
Michael Fowler	Non-Exec. Director
Robert Boaz	Non-Exec. Director



CYY share price/volume history on the ASX for the past 12 months.

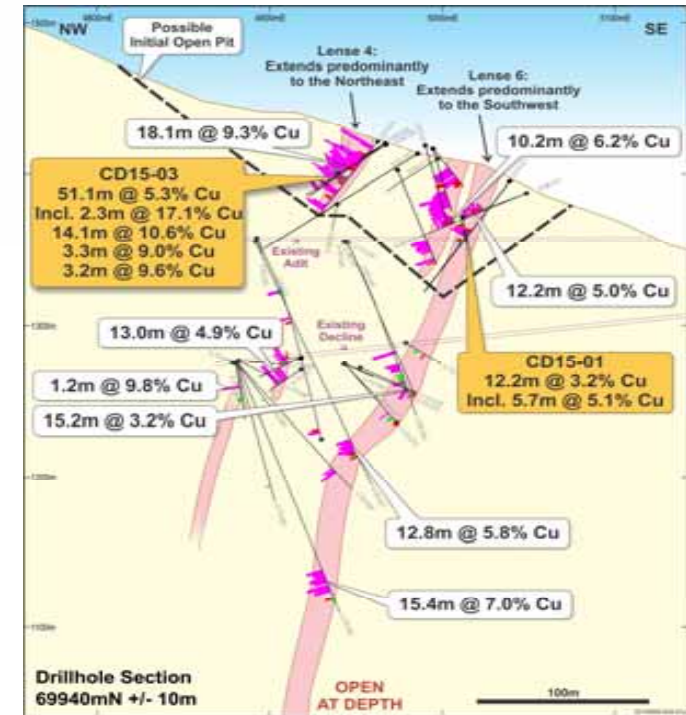
- Market capitalisation currently ~\$21 million
- Completed a \$2.7 million capital raising in May 2016 to fund the current work program
- Cash at 30 June 2016 ~\$2.0 million



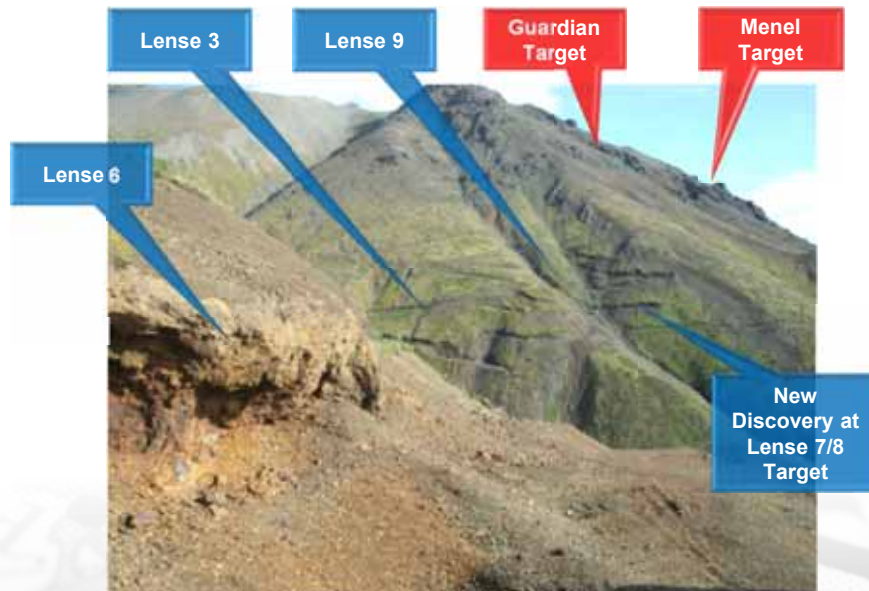
ALASKA

SHALLOW, THICK, VERY HIGH-GRADE MINERALISATION

- Only 140 holes drilled for 12,662m (prior to 2016 drilling program)
- Mineralisation intersected over the entire 700m of strike drilled to date, including:
 - 51.1m* at 5.3% Cu from 4.4m
 - 18.1m at 9.3% Cu from 22.7m
 - 14.1m at 9.9% Cu from 134.6m
 - 18.4m at 6.3% Cu from 31.4m
 - 15.4m at 7.0% Cu from 145.2m (U/G hole)
 - 10.4m at 7.9% Cu from 14.0m
 - 12.8m at 5.8% Cu from 141.1m
 - 10.1m at 7.1% Cu from 39.0m
 - 9.1m at 7.0% Cu from 28.7m
- *Estimated true width ~25m
- Mineralisation open in both directions along strike and at depth



Cross section showing mineralisation in Lenses 4 and 6 at the Caribou Dome Project



Looking NE from outcropping mineralisation at Lense 6 (foreground) to Lenses 3, 7, 8 and 9 (background)

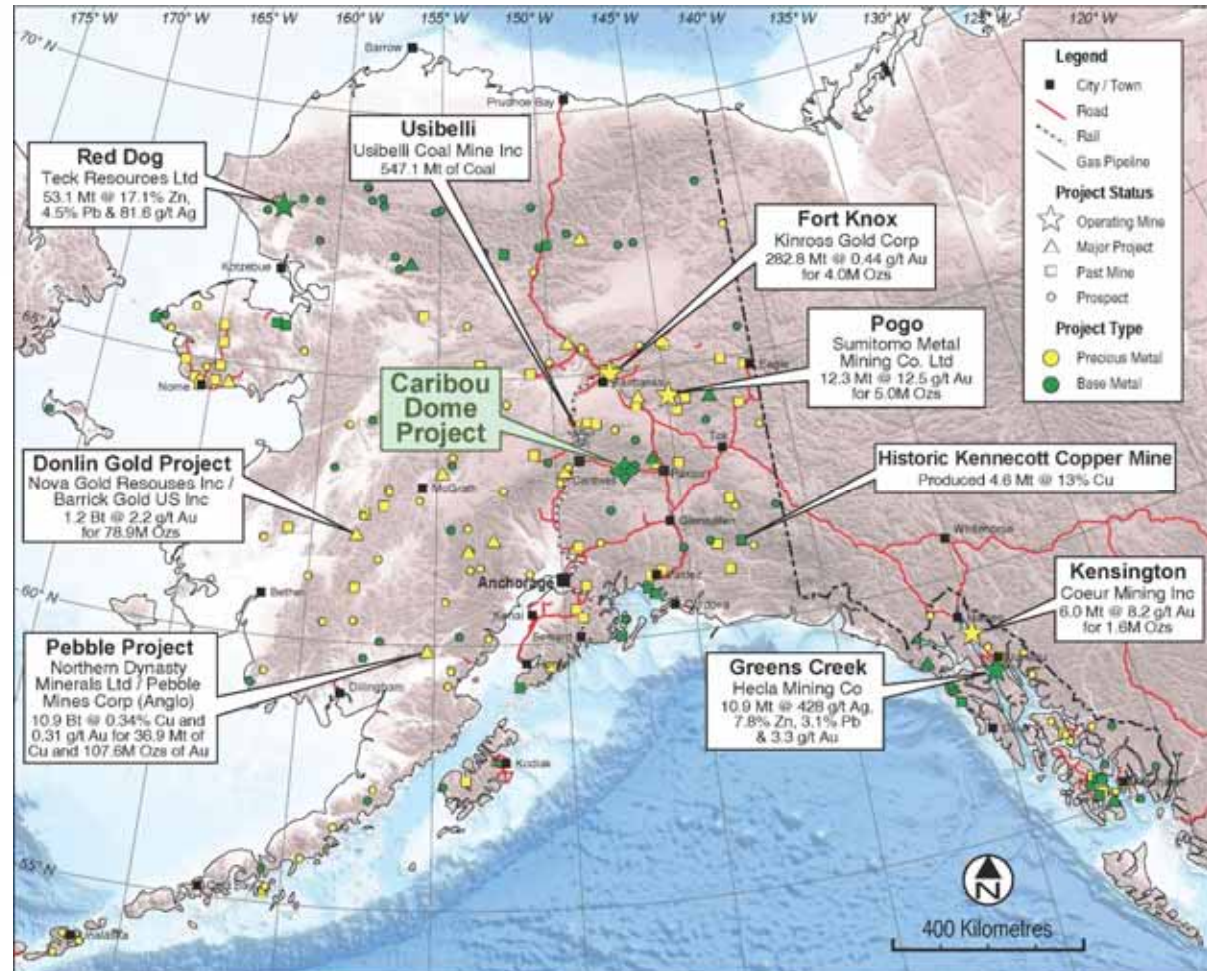
EXCELLENT ACCESS AND INFRASTRUCTURE IN A PRO-MINING JURISDICTION

CARIBOU DOME COPPER PROJECT

- 250km NE of Anchorage
- Excellent infrastructure:
 - Road access the whole way to the Caribou Dome Deposit
 - Only ~100km east of the Anchorage-Fairbanks railway line and high-voltage power at Cantwell
 - Bulk commodities currently exported from the port of Seward

ALASKA, USA

- 80% of GDP from oil/gas/mining
- “Number 6” in the 2015 Fraser Institute Mines Investment Attractiveness Index
- Produced 40M+ oz gold to date
- 6 currently producing mines



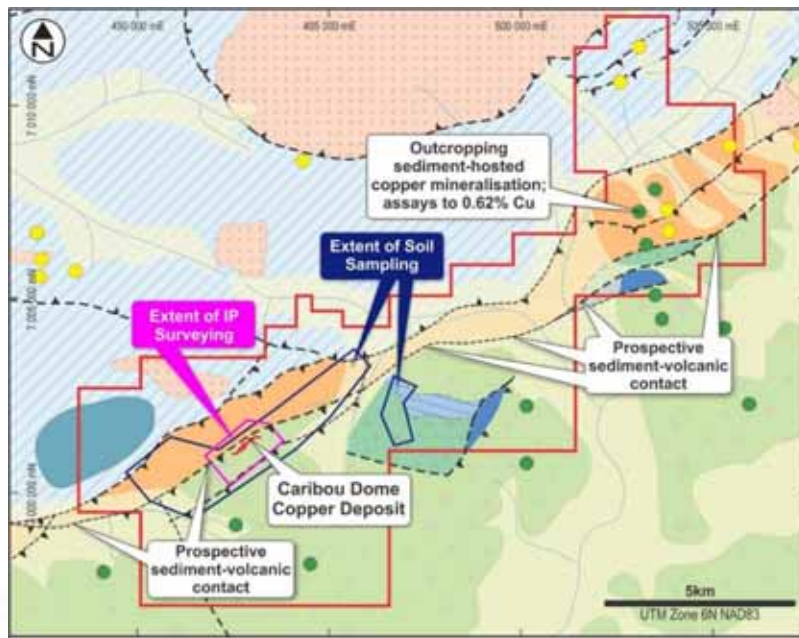
Major mineral deposits and occurrences in Alaska, USA



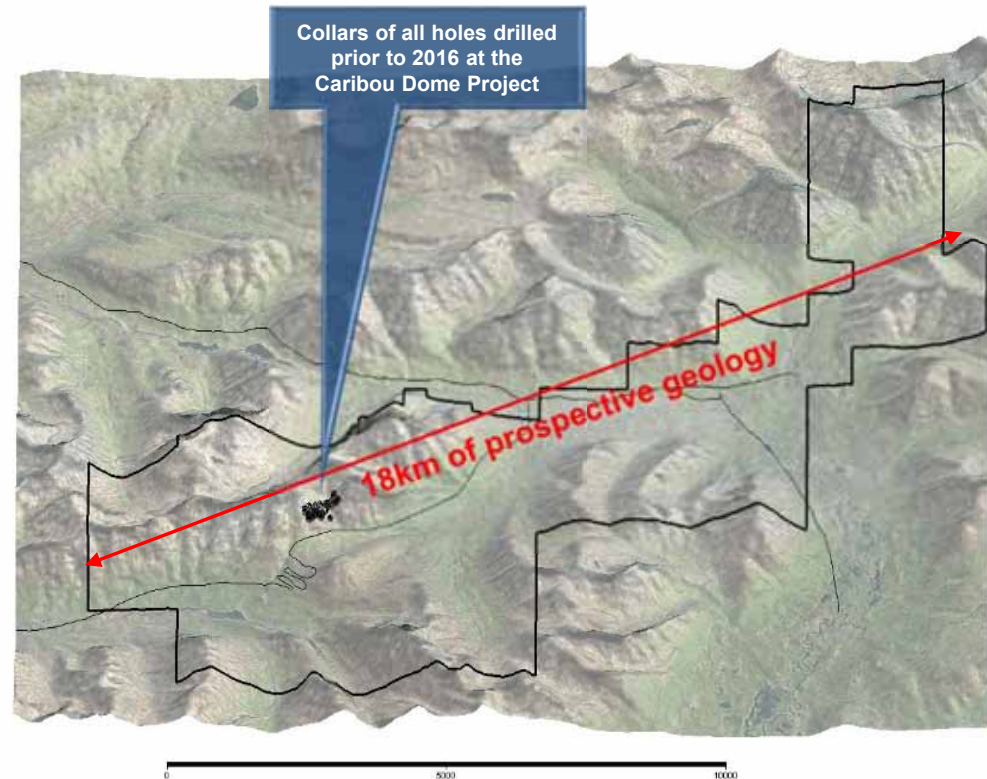
ALASKA

EXCEPTIONAL EXPLORATION UPSIDE

- Sediment-hosted copper deposits can be very large, for example:
 - Mt Isa Copper Deposit – 255Mt @ 3.3%Cu
- All drilling to date confined to just 700m of strike
- >18km of the sedimentary host horizon within the Project area, all of which is virtually unexplored
- Two very effective exploration tools to find new mineralisation:
 - Soil geochemistry
 - Induced polarisation (IP)
- Soil geochemistry will help find more mineralisation along strike. IP will help find more mineralisation both along strike and at depth



Regional geology of the Caribou Dome Copper Project



SOIL GEOCHEMISTRY WORKS!

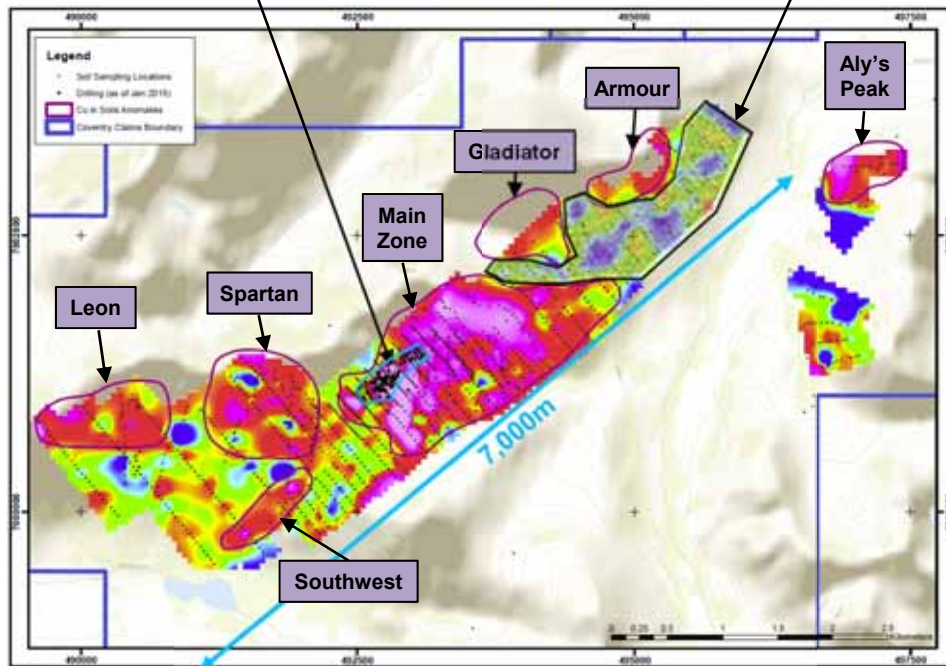
- 7km of strike at the Caribou Dome Deposit covered with soil sampling
- A very strong soil anomaly is evident over the Caribou Dome Deposit itself
- Multiple other sizeable untested soil anomalies over the entire 7km

All previous drilling constrained to 700m of strike on the western edge of a contiguous 2,000m long soil anomaly

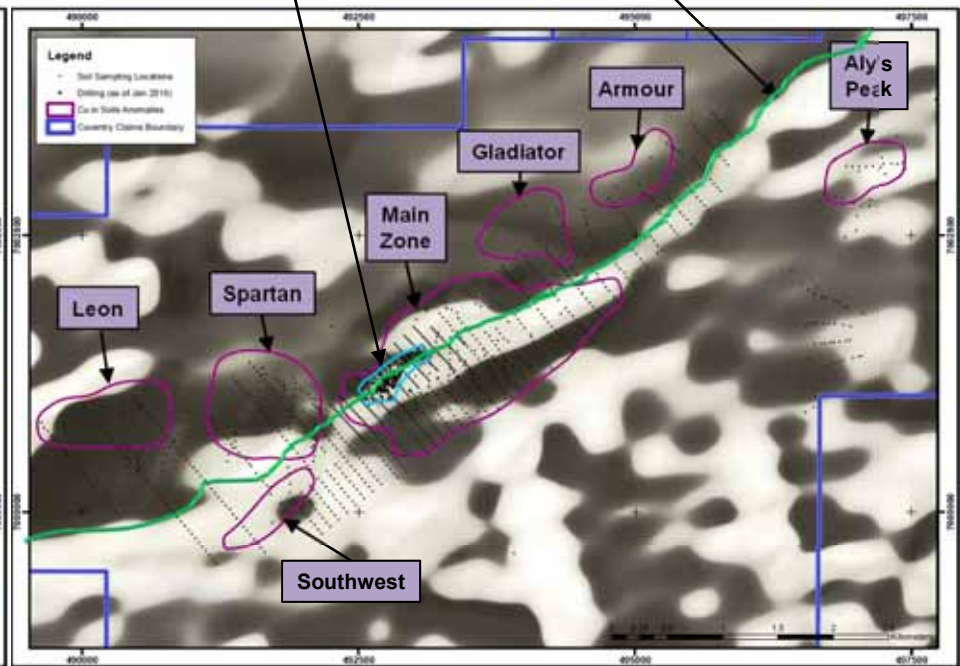
Soils here unreliable because of transported cover

All drilling over 700m of strike

Approximate position of volcanic/sediment contact



Copper in soil anomalies



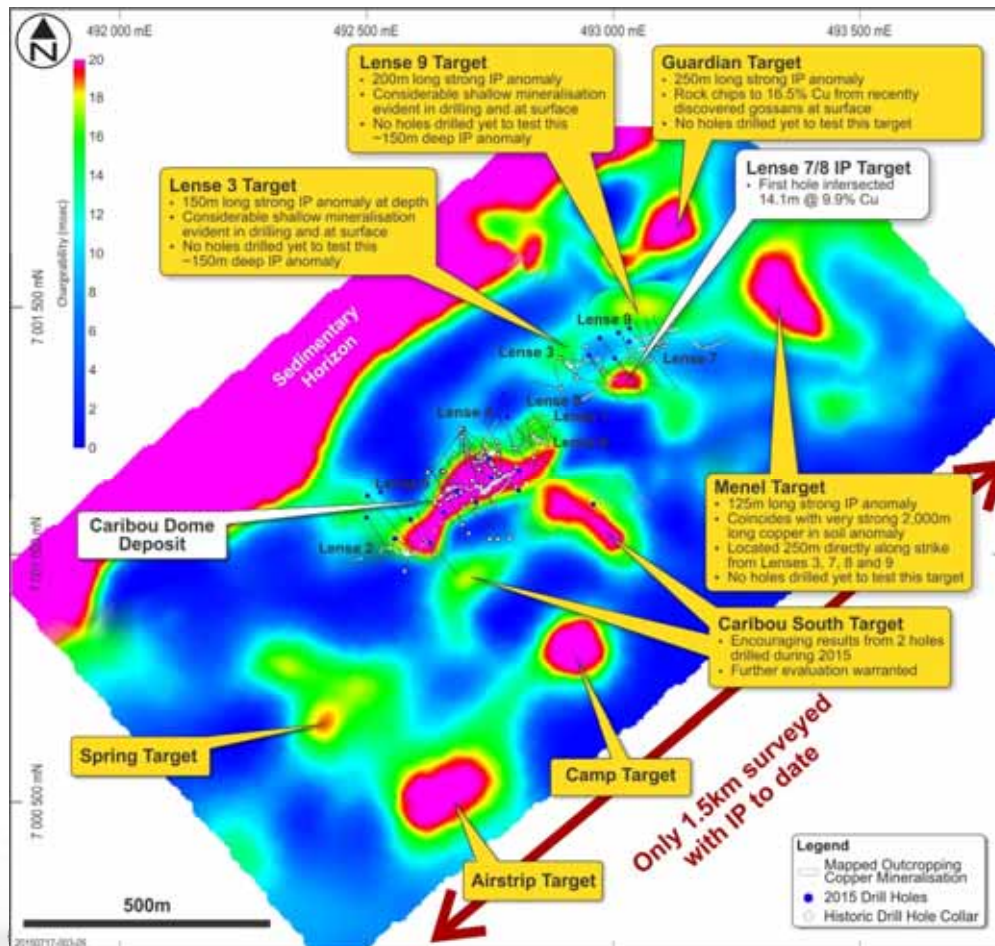
Copper in soil anomalies on 1VD of aeromagnetics



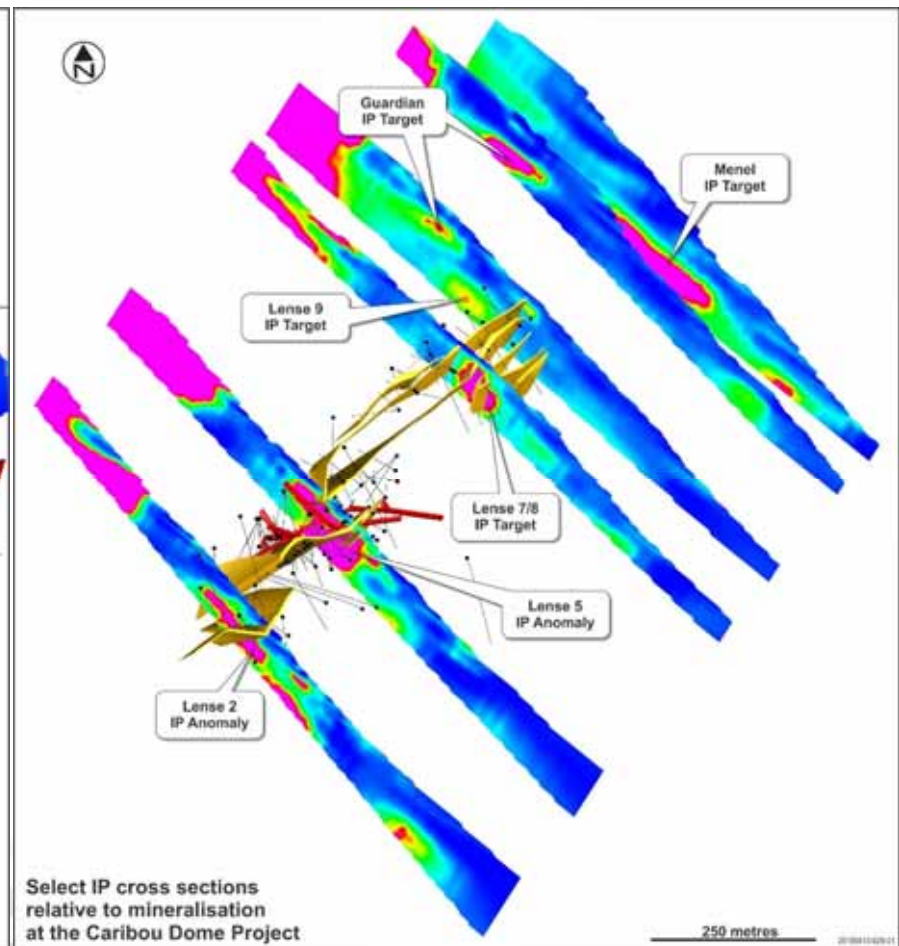
ALASKA

IP WORKS!

- 1.5km of strike covered with IP in 2015:
- Known mineralisation gives rise to very strong IP responses
- First hole ever drilled into the Lense 7/8 IP Target (during 2015) intersected 14.1m @ 9.9% Cu



Plan view of depth inverted 2015 IP Chargeability Data



Select cross sections of depth inverted 2015 IP Chargeability Data

SUBSTANTIAL PROGRAM OF ONGOING FIELD WORK COMMENCED IN EARLY JUNE 2016

8,000m Drilling Program

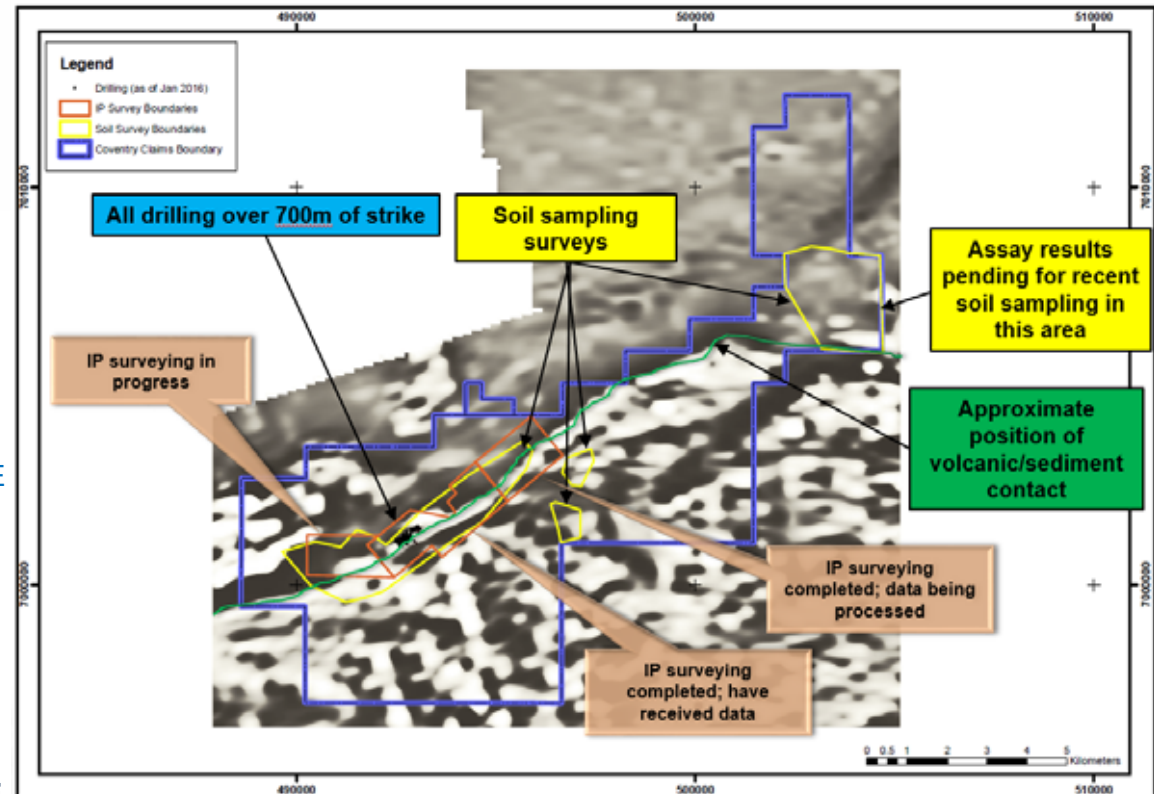
- **First drill rig arrived on site early June 2016**
 - Protracted mechanical issues with this rig
 - To date has only completed 2 holes for 844m
- **Second drill rig on site late June 2016**
 - Has been drilling deeper holes
 - To date has completed 3 holes for 1,527m
- **Assay results expected from mid-August**

IP Survey

- **IP surveying commenced mid-June**
 - Completed extension of the survey 3km to the NE
 - 2015 survey area is currently being resurveyed with configuration that detects deeper sources
 - Coverage will then be extended 2-3km to the W/SW
- **Expect to finish data acquisition in mid-August**

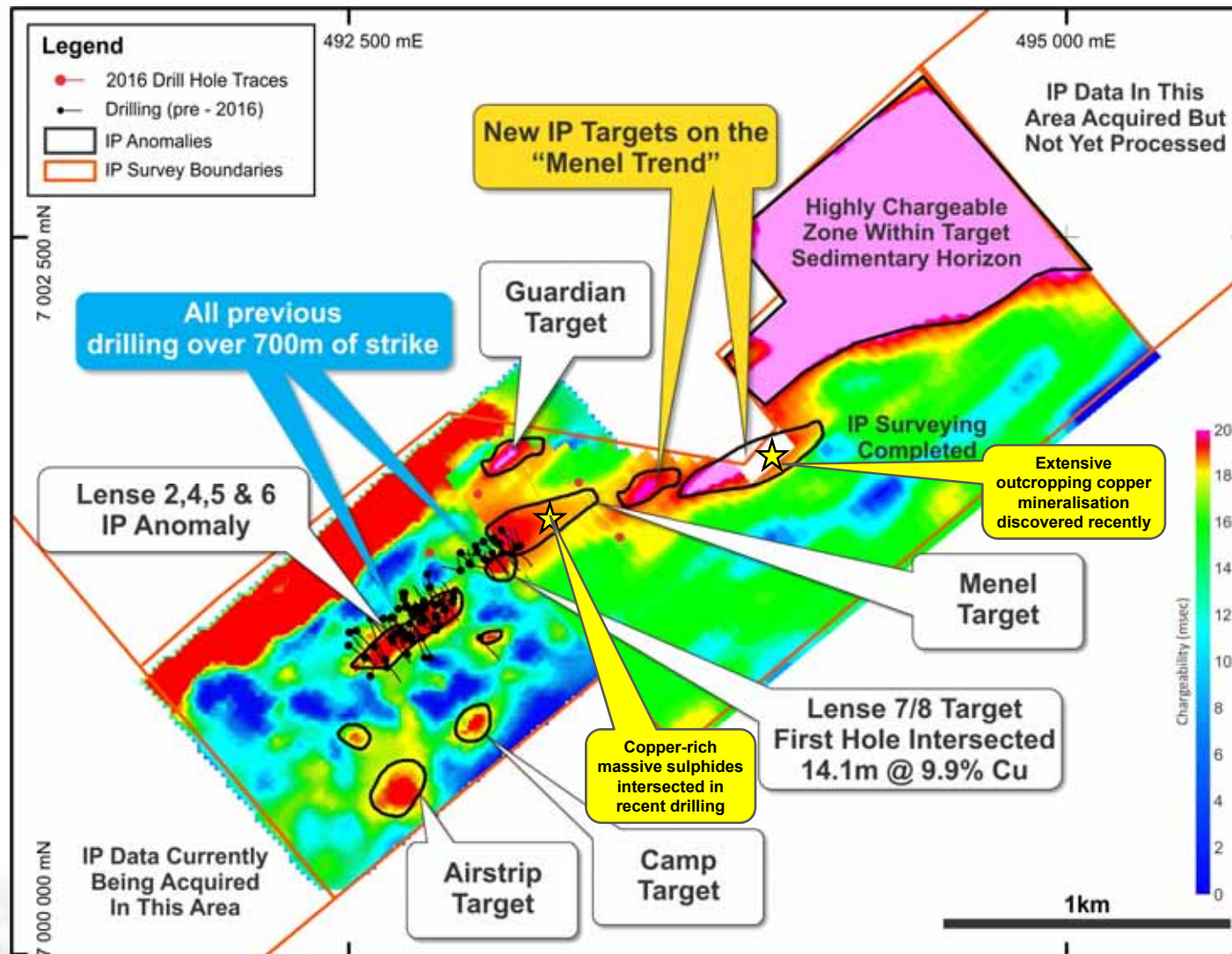
Soil Sampling Survey

- **~800 new soil samples were collected in the NE of the Project area, over prospective geology, in late June/early July**
 - Assay results expected early-mid August
- **Anomalies defined will then be followed up with mapping/geophysics**



INITIAL RESULTS - 2016 IP SURVEY

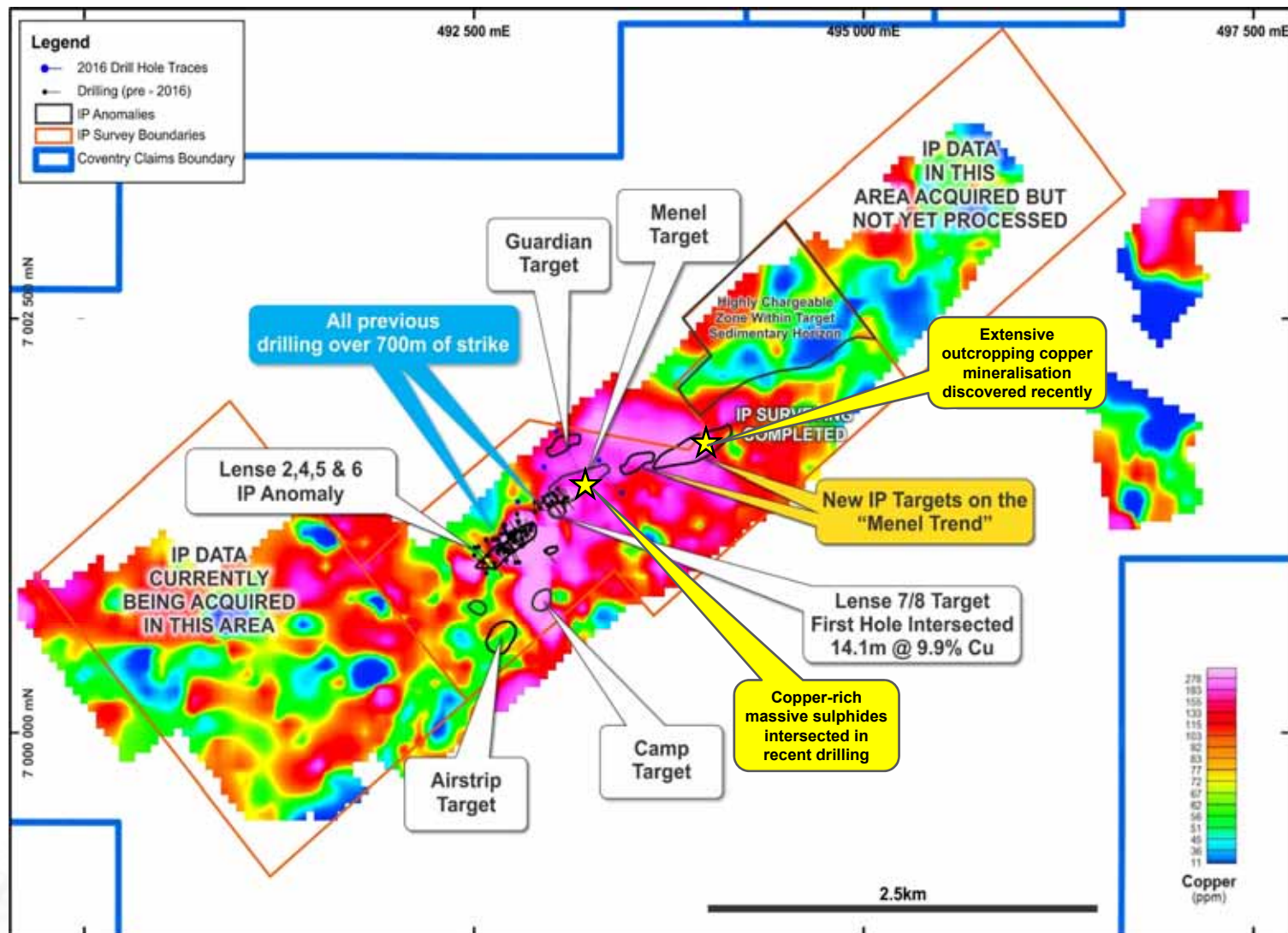
- A series of new, strong, undrilled IP anomalies extend over >1,000 metres of strike, contiguous with and immediately along strike from the previously drilled 700m-long corridor of known mineralisation – the very high priority “Menel IP Trend”



100m depth slice of 2015 IP chargeability data and 200m depth slice of 2016 IP chargeability data

THE NEW MENEL IP TREND ON SOIL GEOCHEMISTRY

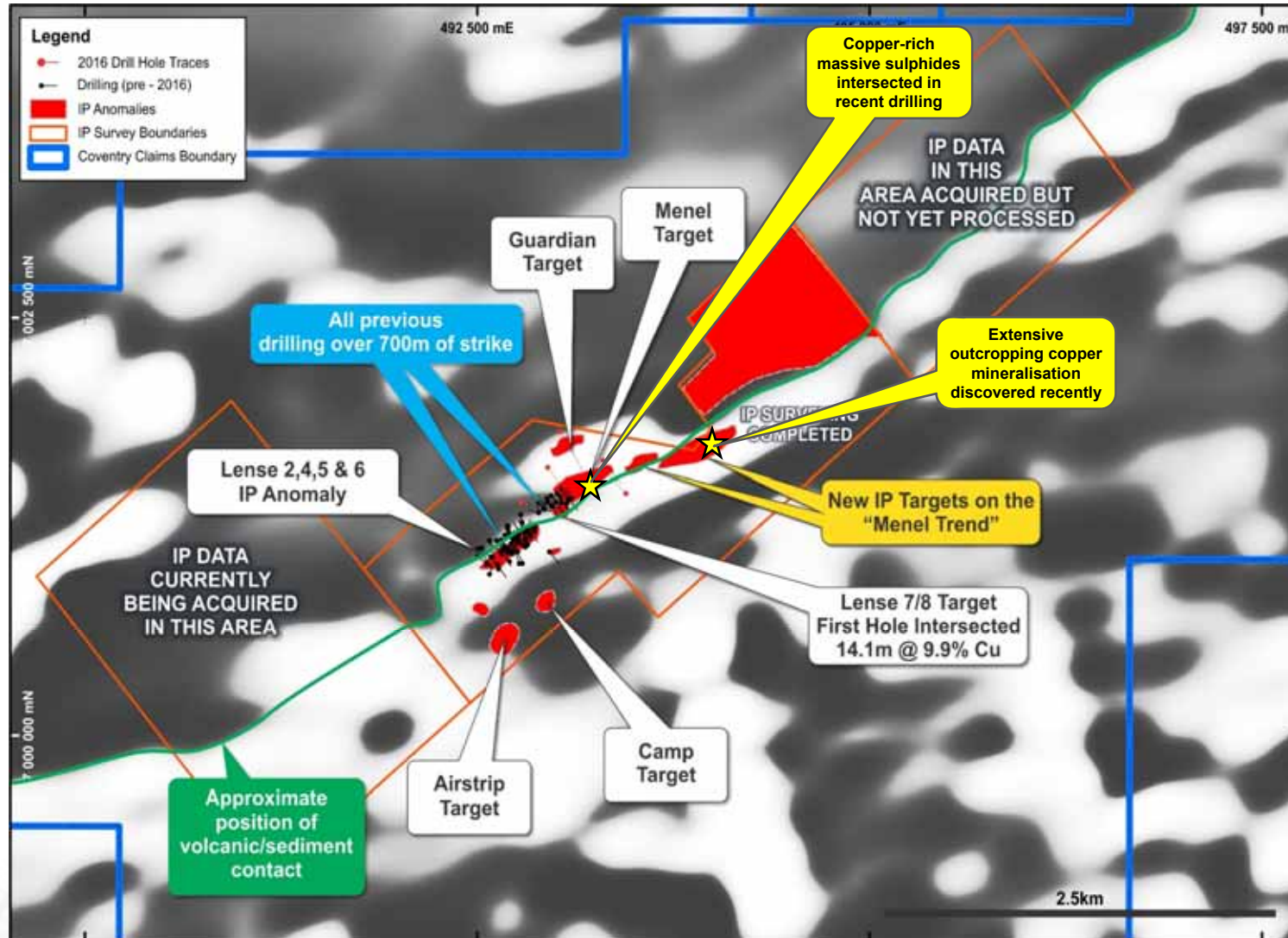
- The anomalies in the new Menel IP Trend coincide with strong copper-in-soil geochemistry anomalies



2015 and 2016 IP chargeability anomalies on image of copper in soil anomalism

MENEL IP TREND ANOMALIES ON AEROMAGNETICS

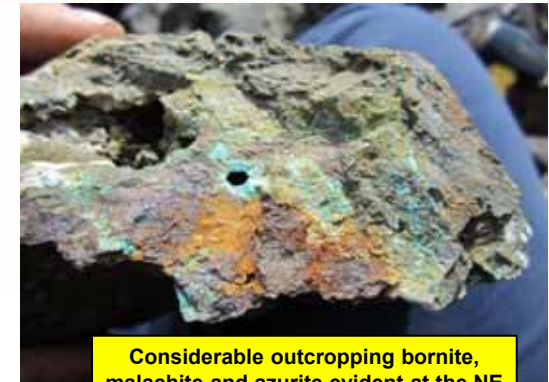
- The anomalies in the new Menel IP Trend lie at the sediment/volcanics contact – the same stratigraphic position as the Caribou Dome Deposit and the preferred stratigraphic position for other targets



2015 and 2016 IP chargeability anomalies on 1st VD of aeromagnetics

INITIAL DRILLING AND MAPPING ALONG THE NEW MENEL IP TREND

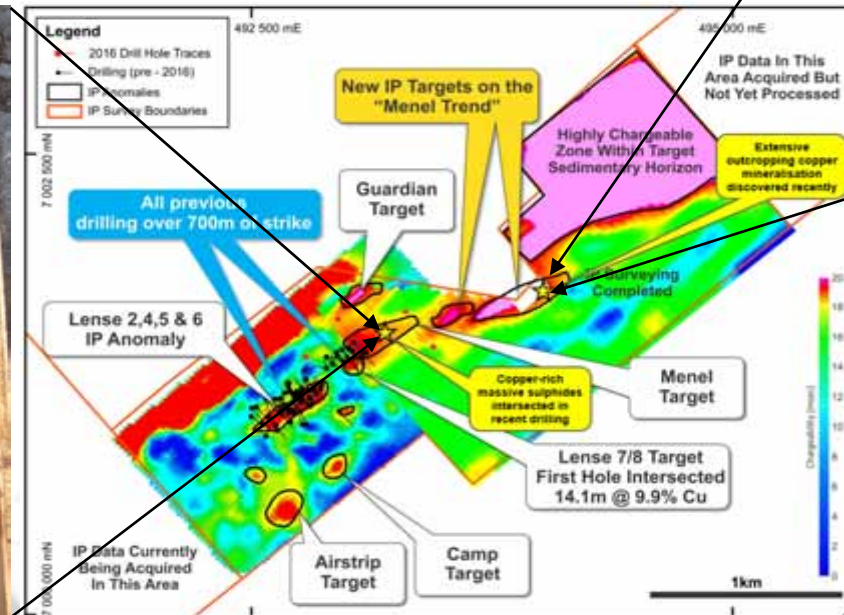
- The second hole drilled to test the SW end of the Menel IP Trend (CD16-005) intersected 46 metres of variably mineralised sediments, at the base of which were 0.5m of copper-rich massive sulphides, ~290m below the surface (assays pending)
- This intersection is 120m along strike from the nearest drill hole, which intersected 0.6m @ 16.4% Cu from 40.2m
 - Confirms that the Menel IP Trend is mineralised and has considerable depth extent
 - Highly likely mineralisation thickens along strike and up/down dip
 - Another deep hole is in progress, then multiple shallower holes will be drilled
- Initial field reconnaissance at the NE end of the Menel IP Trend (>1,000m away) discovered extensive bornite, malachite and azurite in outcrop:
 - Access tracks and drill pads are currently being prepared
 - Several fences of shallow holes will be completed in the coming weeks



Considerable outcropping bornite, malachite and azurite evident at the NE end of the new "Menel IP Trend" over ~100m x 60m

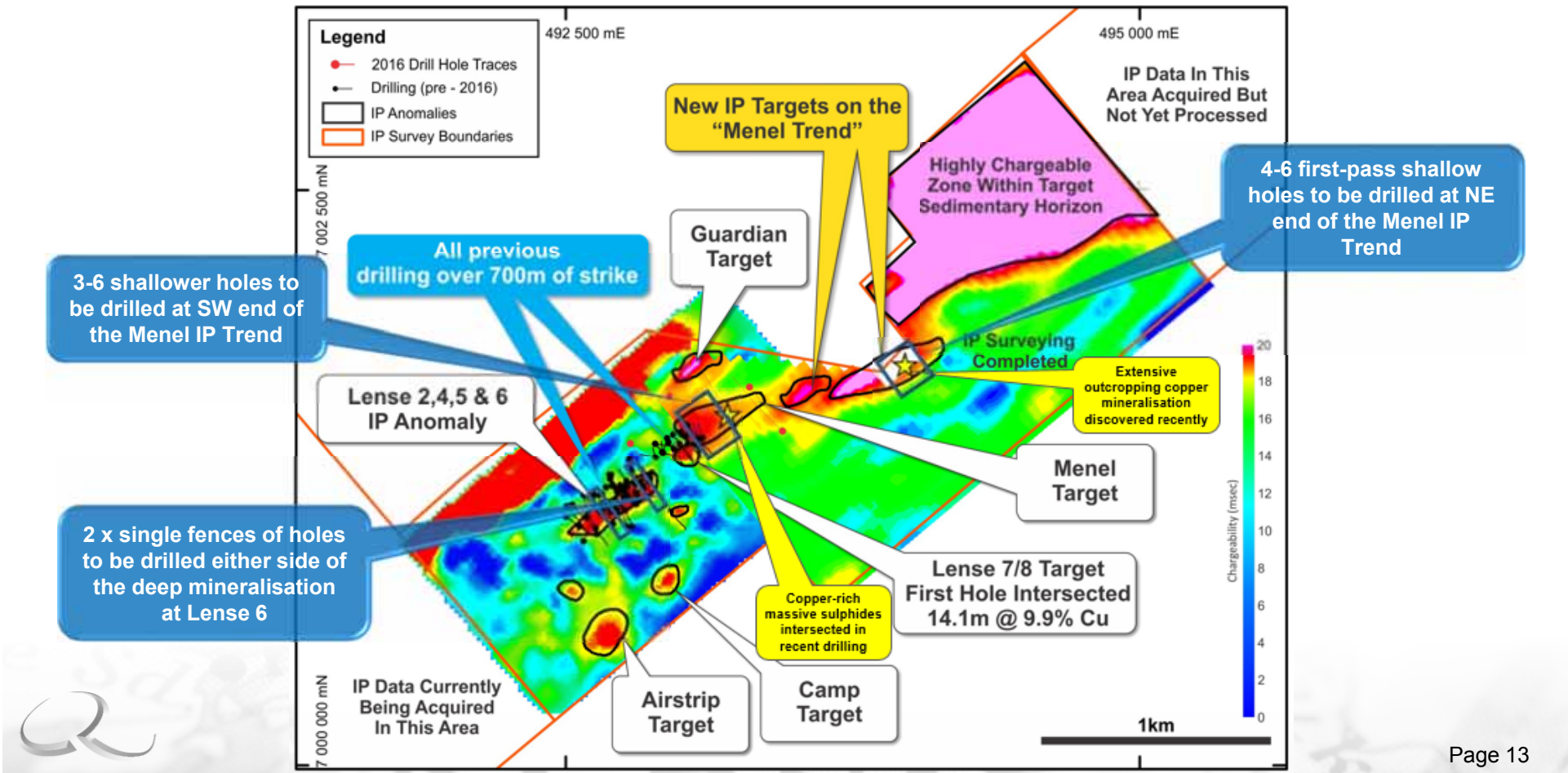


Chalcopyrite-rich massive sulphides in CD16-005 – the second hole drilled to test the Menel IP anomaly



FORWARD DRILLING PLANS

- Only 2,371m of an 8,000m drilling program completed to date
- During the coming weeks it is planned to utilise both rigs to drill shallower holes at 3 priority target areas:
 1. SW end of the Menel IP Trend (3-6 holes)
 2. ~50m along strike in both directions of the deeper drilling at Lense 6 at the Caribou Dome Deposit itself (4-6 holes)
 3. First-pass drilling at the NE end of the Menel IP Trend (4-6 holes)
- Assay results expected through August and beyond



DISCLAIMER

This presentation is not a prospectus nor an offer for securities in any jurisdiction nor a securities recommendation. The information in this presentation is an overview and does not contain all information necessary for investment decisions. In making investment decisions in connection with any acquisition of securities, investor should rely on their own analysis of the Company and consult their own legal and/or financial advisers. The information contained in this presentation has been prepared in good faith by the Company, however no representation or warranty expressed or implied is made as to the accuracy, correctness, completeness or adequacy of any statements, estimates, opinions or other information contained in this presentation. To the maximum extent permitted by law, the Company, its directors, officers, employees and agents disclaim liability for any loss or damage which may be suffered by any person through the use or reliance on anything contained in or omitted from this presentation.

This presentation contains forward looking statements which involve a number of risks and uncertainties. These forward looking statements are expressed in good faith and believed to have a reasonable basis. These statements reflect current expectations, intentions or strategies regarding the future and assumptions based on currently available information. Should one or more risks or uncertainties materialise, or should underlying assumptions prove incorrect, actual results may vary from the expectations, intentions and strategies described in this announcement. The forward looking statements are made as at the date of this announcement and the Company disclaims any intent or obligation to update publicly such forward looking statements, whether as the result of new information, future events or results or otherwise.

Qualified and Competent Person

The information in this announcement that relates to exploration results for the Project has been approved by Mr Ben Vallerine, who is a consultant to the Company and holds an indirect shareholding in the Company. Mr Vallerine has reviewed the exploration and metallurgical results disclosed in this release, but has not verified all of the information due to the programs having been undertaken by the previous owners of the Project.

Mr Vallerine is a Member of the Australian Institute of Geoscientists. Mr Vallerine has sufficient experience which is relevant to the style of mineralisation and type of deposit under consideration and the activity he is undertaking to qualify as a Competent Person as defined in the 2012 Edition of the Australasian Code for Reporting of Exploration Results (JORC Code). Mr Vallerine is also a Qualified Person as defined by Canadian National Instrument 43-101 Standards of Disclosure for Mineral Projects. Mr Vallerine consents to the inclusion in the report of the matters based on the information in the form and context in which it appears.



ADDITIONAL INFORMATION



PROJECT HISTORY

- 1963 – Mineralisation first discovered
- 1964 – First 7 diamond holes drilled
- 1969 – 425m exploration adit developed on 4,630ft rL
- 1970 – 520m exploration decline developed from 4,510ft rL
- 2008 – 225kg bulk sample acquired for metallurgical testwork

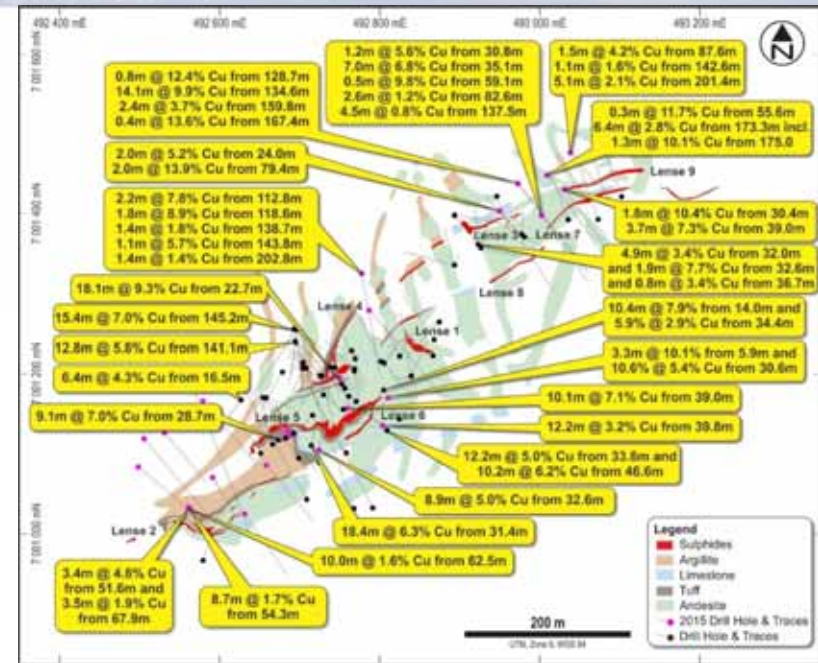
95 of 112 historic diamond holes drilled 1964 – 1970

Negligible work 1970 – 2014

34% of total diamond drilling completed by Coventry in 2015

	Diamond Drilling			
	Surface		Underground	
Date	No. Holes	Metres	No. Holes	Metres
1964	7	465		
1965	14	857		
1966	17	877		
1967	6	367		
1969	2	196	7	947
1970			42	2,374
1977	3	120		
1999	3	744		
2009	2	621		
2011	9	794		
2015	28	4,300		
Totals	91	9,340	49	3,321

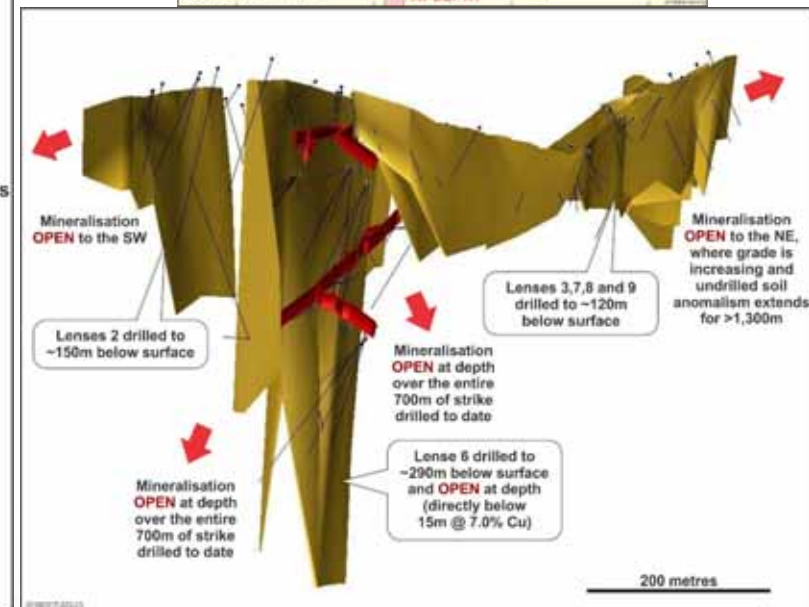
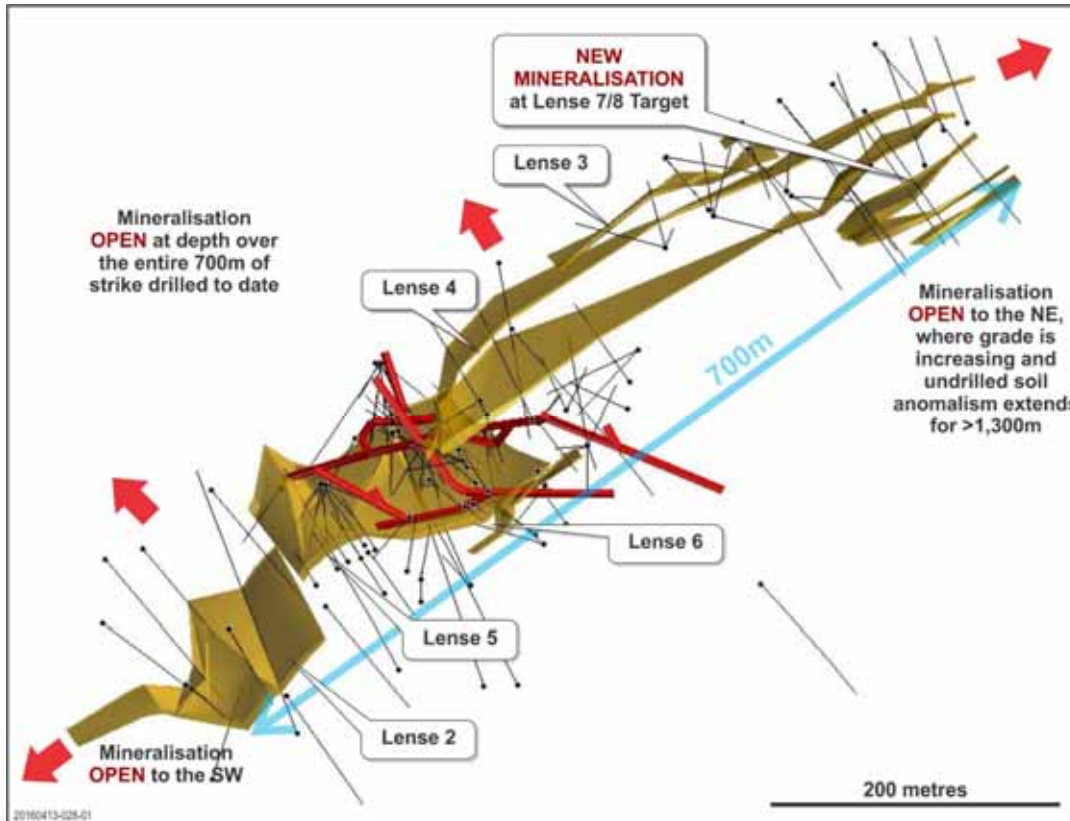
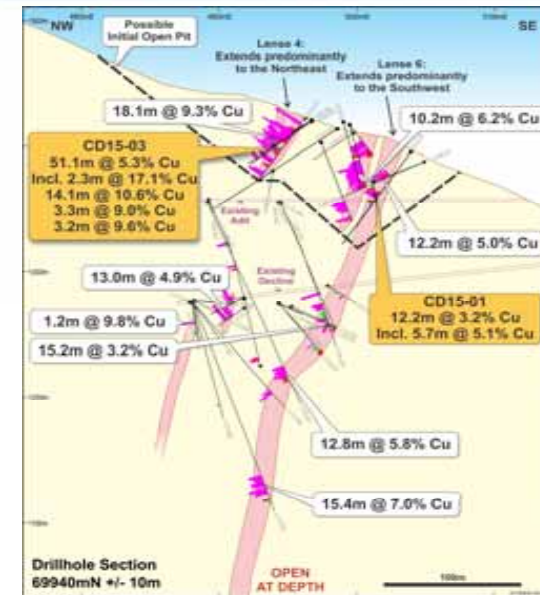
Summary of previous drilling completed at the Caribou Dome Copper Project



Road access and portals to the historic adit and decline

ALL DRILLING

- Only 140 holes totalling 12,662m drilled (prior to 2016 drilling program)
- Only 700m of >18km of strike drill-tested to date
- Mineralisation open:
 - in both directions along strike; and
 - at depth
- Majority of previous drilling focused on Lenses 5 and 6
- Grade of mineralisation appears to be increasing to the northeast



View from above of 3-dimensional model of mineralised lenses

- An independent flotation specialist has been undertaking further metallurgical testwork since Dec 2015
 - **Concentrating on conventional flotation**
- Two phases of testwork completed on a composite sample from the Lense 4, 5 and 6 area that graded 5.03% Cu:
 - **Recoveries >95% Cu have been achieved during rougher flotation tests**
 - **Concentrates grading up to 24.5% Cu have been produced**
- Third phase of testwork in progress on samples from the Lense 7/8 area to determine whether the metallurgical properties here are similar
- **Results indicating that conventional flotation may be a viable low-CAPEX development alternative**
- Additional samples will be acquired during 2016 to continue to optimise recoveries and concentrate grades



Drill core from CD15-14 (Lense 7/8 Target) – containing >16% Cu



Flotation testwork on samples from Lenses 4, 5 and 6

PROJECT ACQUISITION TERMS



- **C-D Development Corp. is the underlying tenement owner:**
 - Receives 50% of annual cash payments (per table below); and
 - Retains a 5% royalty, with Coventry having the right to purchase each 1% for US\$1,000,000
- **Unlisted US companies SV Metals LP and Hatcher Resources Inc. both retain 10% interests in the Project**
 - SV Metals receives 50% of annual cash payments (per table below)
- **In 2015 Coventry entered into a 9-year option to acquire an 80% interest in the Project**
- **Coventry's ongoing obligations comprise:**

June	Annual Cash Payments (50% to C-D Development Corp & 50% to SV Metals) (US\$)	Annual Expenditure Obligation (US\$)	Minimum Expenditure per 3-year period (US\$)
2015	\$20k PAID	\$100k SATISFIED	\$2.0m >\$2.0m SPENT TO DATE
2016	\$30k PAID	\$100k SATISFIED	
2017	\$50k	\$100k	
2018	\$100k	nil	\$2.0m
2019	\$100k	nil	
2020	\$100k	nil	
2021	\$100k	nil	\$2.0m
2022	\$100k	nil	
2023	\$1.36m	nil	
Total	\$1.96m		\$9.0m or Complete Feasibility Study¹

¹ If the Feasibility Study is delivered before expending US\$9million, the earn-in condition will be satisfied



ALASKA



MARK BOJANJAC

COVENTRY RESOURCES LTD

CHAIRMAN

COVENTRY RESOURCES LTD.

SUITE 9, 5 CENTRO AVENUE

SUBIACO, WA 6008

PO BOX 457, WEST PERTH

WA 6872

T: +61 8 9226 1356

E: MARK@MORELLA.NET.AU

W: WWW.COVENTRYRES.COM

MIKE HAYNES

COVENTRY RESOURCES LTD

MANAGING DIRECTOR & CEO

COVENTRY RESOURCES LTD

SUITE 9, 5 CENTRO AVENUE

SUBIACO, WA 6008

PO BOX 457, WEST PERTH

WA 6872

T: +61 8 9226 1356

E: MHAYNES@COVENTRYRES.COM

W: WWW.COVENTRYRES.COM

