

10 July 2007



ABN 28 009 174 761

Manager Announcements
Company Announcements Office
Australian Stock Exchange Limited
4th Floor, 20 Bridge Street
Sydney NSW 2000

Level 11, 461 Bourke Street
Melbourne Victoria 3000 Australia
Telephone: +61 3 8602 6500
Facsimile: +61 3 8602 6560

Dear Sir

High-grade Gold Intersections at Moolart Well

Key Points:

- **High-grade oxide zone gold intersections have been received from drilling at the Moolart Well gold deposit as follows;**
 - **9m at 50.1 g/t gold from 62m in hole MWAC2123;**
 - **7m at 23.8 g/t gold from 64m in hole MWDD063;**
 - **14m at 36.3 g/t gold from 40m in hole MWSRC329.**
- **The intersections extend primary mineralised structures in the Stirling area of the deposit.**
- **None of the intersections are included within the current resource or occur within the current pit designs.**

Introduction

Regis Resources NL (ASX:RRL) has received high-grade gold assays from on-going resource drilling programs at the Moolart Well gold deposit. These results are summarised in Table 1 below. All of the results originate from the Stirling and Stirling south area of the deposit (see Fig 1) and occur within the oxide zone above the base of weathering. The results confirm the presence of and extend the strike of primary mineralisation zones in the Stirling area, all of which are open at depth. These results are further evidence of the high grade nature of the primary gold lodes in the western portion of the Moolart Well gold deposit, although some supergene enrichment may occur.

Table 1. Summary High-Grade intersections, Stirling Area, Moolart Well.

Hole No	Northing mN	Easting mE	From m	To m	Int m	Au g/t
MWDD063	6944750	435410	64.0	71.0	7.0	23.80
incl			64.0	65.0	1.0	383
incl			66.0	68.0	2.0	24.75
MWSRC329	6944375	435438	40	54	14	36.28
incl			41	44	3	162.7
MWAC2123	6944200	435338	62	71	9	50.1
incl			65	69	4	177.7
			66	67	1	411

Holes drilled at 270 azimuth, -60° dip. Cut-off grade 0.5g/t, 1m minimum intercept, 2m maximum internal waste
All assays by fire assay, all assays greater than 10g/t by screen fire assay

Moolart Well – High Grade Intersections

Diamond hole **DD063** was drilled in the central Stirling pit area as part of the recently completed 64 hole drilling program. The results of 7m at 23.80 g/t gold including 1m at 383g/t (greater than 10oz/t) occur in the lower saprock zone above the top of fresh rock. The results confirm the presence of the steeply-dipping high grade L180 mineralised lode system, which extends continuously over 700m north-south in this area. This primary lode exists within the lower oxide zone (saprock zone) and in fresh rock, and is open at depth.

Reverse circulation drillhole **SRC329** was drilled as part of the 50m x 25m infill program in the newly-emerging Stirling south area. This intersection of 14m at 36.28g/t occurs close to the base of complete oxidation in this area. Combined with other intersections, this result confirms the presence of a 300m continuous north-south primary lode structure in this area. This primary lode also has an interpreted steep easterly dip similar to the L180 structure to the north, and is open at depth.

Hole **AC2123** was also drilled as part of the resource infill program in the new Stirling south area. The intersection of 9m at 50.1 g/t occurs in the saprock zone above fresh rock and in conjunction with other results, confirms the presence of a second, steep easterly-dipping primary lode at Stirling extending over 400m north-south.

These intersections, in conjunction with previously announced results, confirm the presence of primary mineralised structures over more than 1km length in the Stirling area of the Moolart Well gold deposit. These structures survive into the lower portion of the weathering profile and extend into fresh rock below approximately 70m vertical depth. All of these primary mineralised lodes are open at depth and are priority targets for the exploration program for Moolart Well down to 200m vertical depth, below the current resource.

None of the intersections reported here are included in the current resource, or in the new resource statement currently in preparation. The intersections are all also outside of current production pit shell designs, but are likely to be included with further optimisation.

Drilling is currently underway to further define the primary mineralisation structures at Moolart Well in fresh rock below the oxide zone.

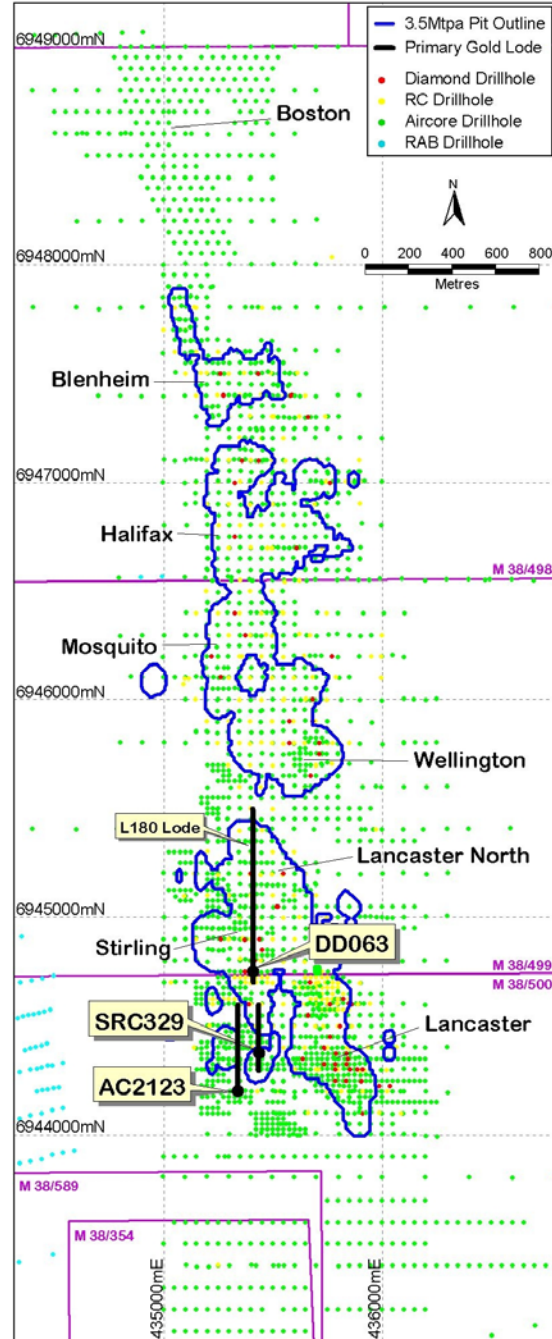


Fig 1 Moolart Well Gold deposit - location of high-grade gold intersections.,.

Tenement Holdings

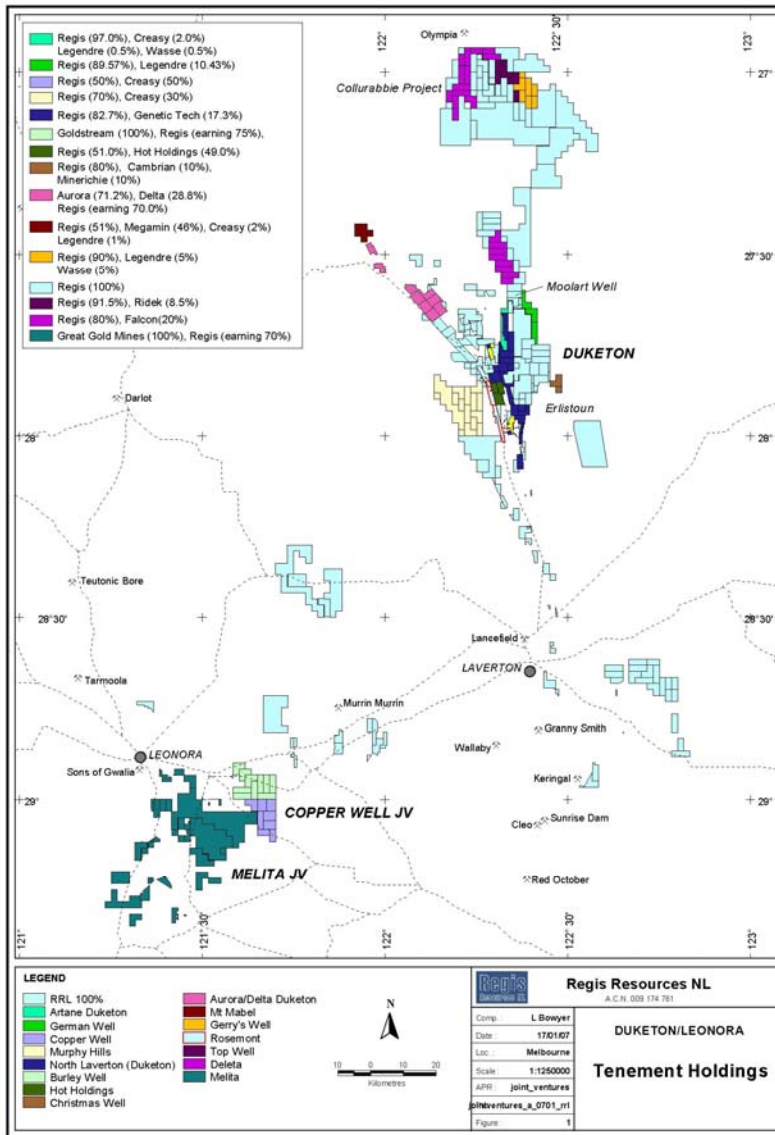


Fig 2. Regis Group tenement holdings , Eastern Goldfields region, Western Australia.

Yours sincerely

David Walker
Managing Director

For further information contact:

Mr David Walker
Managing Director
Regis Resources NL
03 8602 6500

Dr Michael Folie
Chairman
Regis Resources NL
03 8602 6500

The technical information contained in this report has been reviewed by Mr. David Walker who is a member of the Australasian Institute of Mining and Metallurgy and has more than 20 years experience in the exploration industry.