

18 April 2012



ABN 28 009 174 761

[www.regisresources.com](http://www.regisresources.com)  
Level 1  
1 Alvan Street  
Subiaco WA 6008 Australia

PO Box 862  
Subiaco WA 6904 Australia  
P 08 9442 2200  
F 08 9442 2290

Manager Announcements  
ASX Market Announcements  
Australian Securities Exchange Limited  
Level 4, 20 Bridge Street  
Sydney NSW 2000

### **2012 European Gold Forum**

Please find attached a presentation being provided to investors at the European Gold Forum by Mark Clark in Zurich, Switzerland on Wednesday 18<sup>th</sup> April 2012.

Yours sincerely  
Regis Resources Limited

A handwritten signature in black ink that reads 'Kim Massey'.

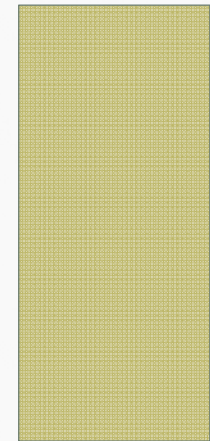
Kim Massey  
Company Secretary

# BUILDING A QUALITY AUSTRALIAN GOLD BUSINESS



MARK CLARK  
MANAGING DIRECTOR

APRIL 2012



# DISCLAIMER & COMPETENT PERSON STATEMENT

This presentation contains only a brief overview of Regis Resources Limited and its associated entities ("Regis or RRL") and their respective activities and operations. The contents of this presentation, including matters relating to the geology of Regis' projects, may rely on various assumptions and subjective interpretations which it is not possible to detail in this presentation and which have not been subject to any independent verification.

This presentation contains a number of forward-looking statements. Known and unknown risks and uncertainties, and factors outside of Regis' control, may cause the actual results, performance and achievements of Regis to differ materially from those expressed or implied in this presentation.

To the maximum extent permitted by law, Regis does not warrant the accuracy, currency or completeness of the information in this presentation, nor the future performance of Regis, and will not be responsible for any loss or damage arising from the use of the information.

The information contained in this presentation is not a substitute for detailed investigation or analysis of any particular issue. Current and potential investors and shareholders should seek independent advice before making any investment decision in regard to Regis or its activities.

The technical information in this presentation has been reviewed and approved by Mr Morgan Hart who is a member of the Australasian Institute of Mining and Metallurgy. Mr Hart has sufficient experience which is relevant to the style of mineralisation and type of deposit under consideration and to the activity which he is undertaking to qualify as a Competent Person as defined in the 2004 edition of the 'Australasian Code for the Reporting of Exploration Results, Mineral Resources and Ore Reserves'. Morgan Hart is a director and full time employee of Regis Resources Ltd and consents to the inclusion in the report of the matters based on his information in the form and context in which it appears.

# CORPORATE OVERVIEW

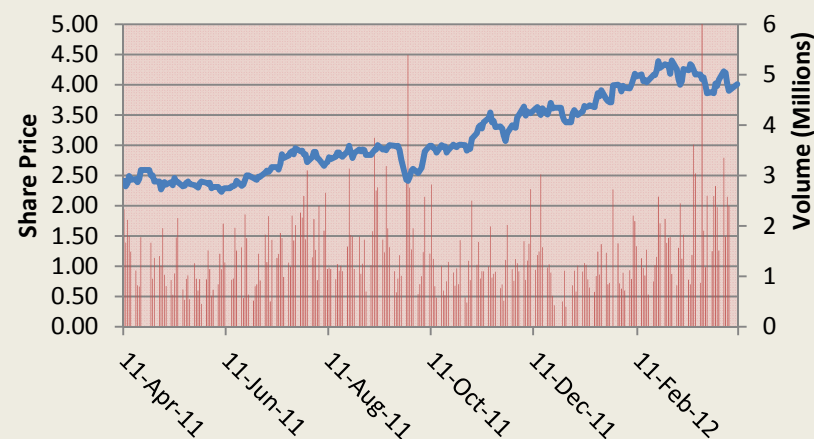
## Corporate Information

ASX Code	RRL
Shares	451m
Last price	\$4.01
Market capitalisation	\$1.81bn
Listed options	9.5m
Unlisted options	6.3m

## Board of Directors

Mark Clark	CEO
Morgan Hart	COO
Nick Giorgetta	Chairman
Mark Okeby & Ross Kestel	NED

## Share Price & Volume



## Major shareholders

Newmont	16%
Directors & management	12%
Libra Advisors	4%
Australian Institutions	≈20%

# BALANCE SHEET

## Cash

Cash & bullion (Dec11)	\$40.9m
------------------------	---------

## Profit & Cash-flow (Half year ended 31 Dec 11)

NPAT	\$38.2m
------	---------

EBITDA	\$52.0m
--------	---------

Operating cashflow (half yr)	\$52.3m
------------------------------	---------

## Debt

Balance	\$30m
---------	-------

Further facility available	\$50m
----------------------------	-------

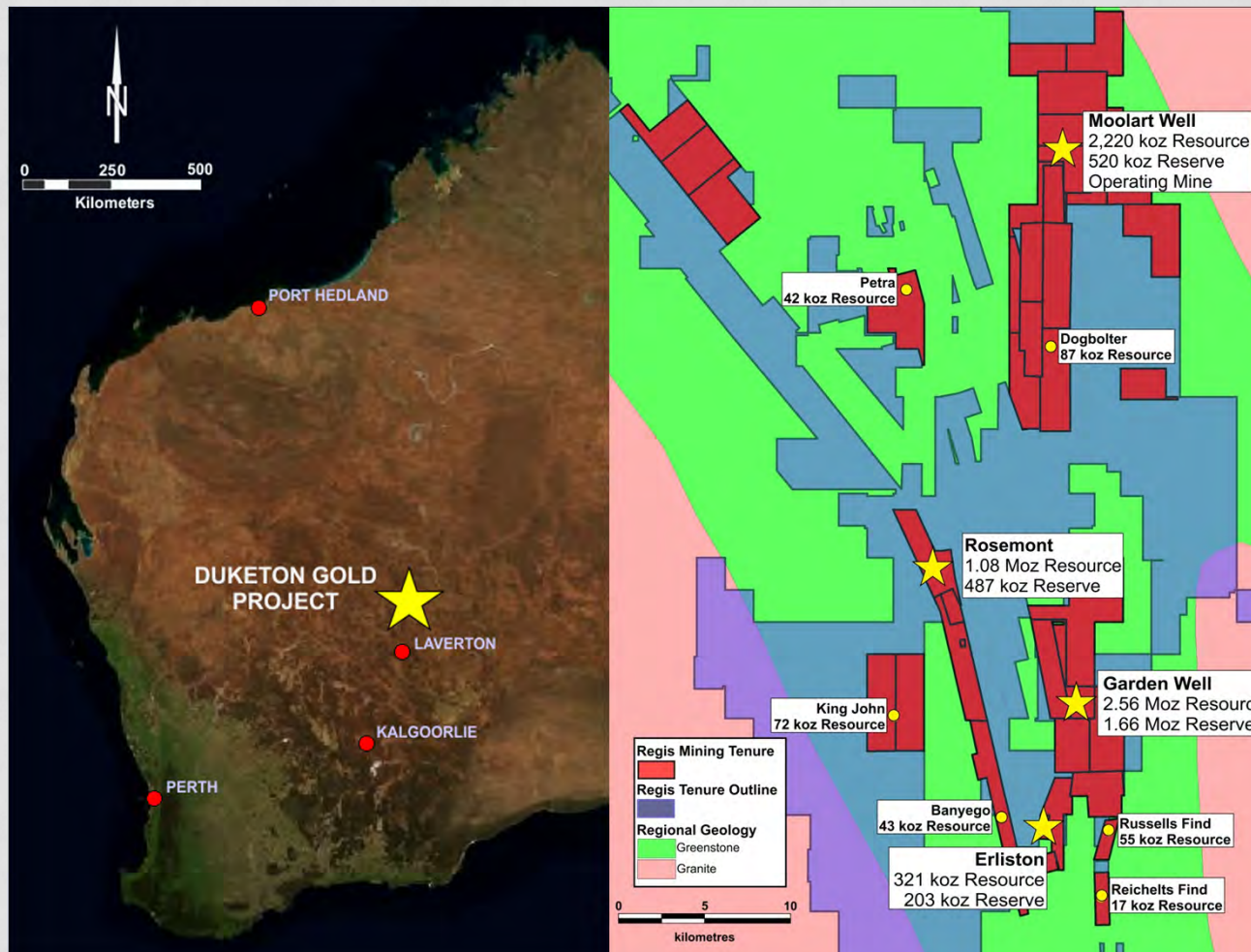
## Gold Hedging (31 Dec 11)

Total (7% of JORC reserves)	185koz
-----------------------------	--------

- FF 119koz at \$1,401/oz (12koz per quarter 2012-14)
---

- SD 66koz at \$1,524/oz
--------------------------

# DUKETON PROJECT OVERVIEW



- 350km north-north east of Kalgoorlie
- 100% Regis owned
- 303 granted leases
- 1,570 km<sup>2</sup> of ground
- 6.5Moz of resources<sup>1</sup>
- 2.9Moz of reserves<sup>1</sup>

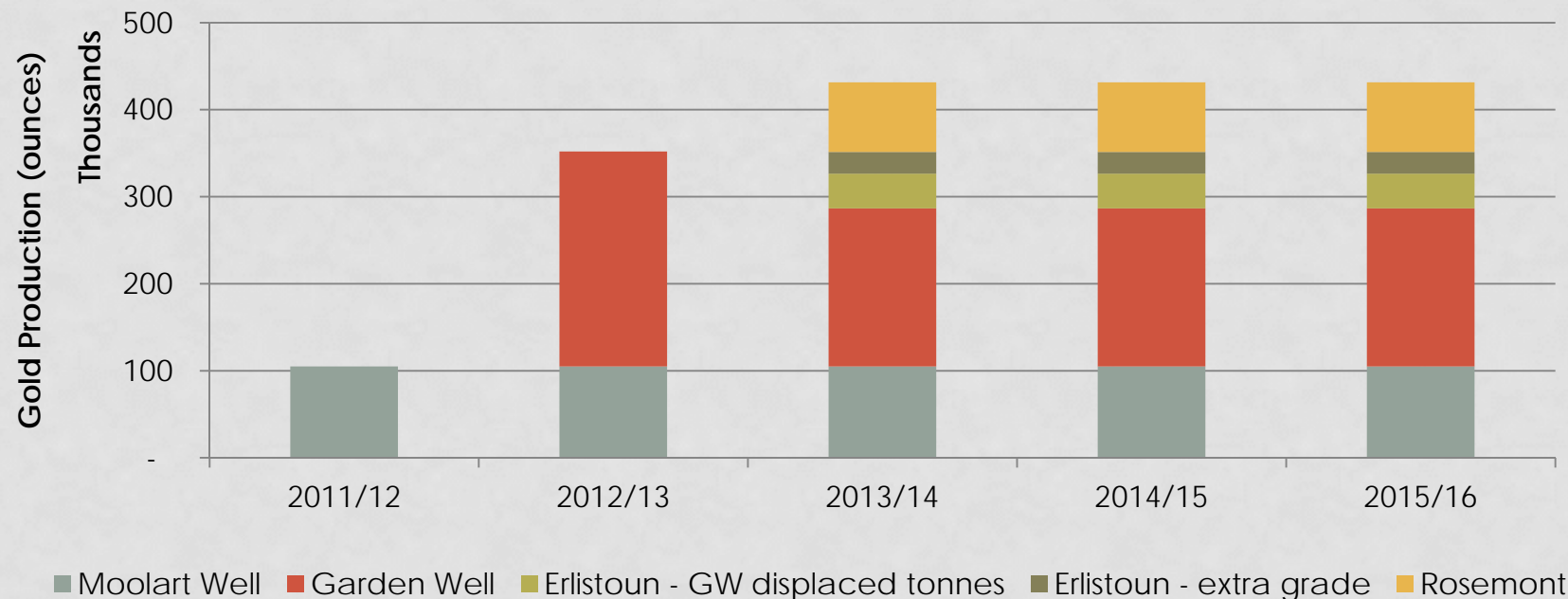
Note 1 – full breakdown of these reserves and resources in accordance with JORC is set out in Appendix 1 & 2 to this presentation

# ORE RESERVES<sup>1</sup>

	Total			Forecast LOM Opex (A\$/oz) <sup>2</sup>	Staus
	MT	g/t	Koz		
<b>Garden Well</b>	<b>35.3</b>	<b>1.46</b>	<b>1,660</b>	<b>555</b>	<b>Construction</b>
<b>Moolart Well</b>					
- Laterites	8.8	1.30	367		Operating
- Oxide	2.6	1.82	153		Operating
<b>MW Total</b>	<b>11.4</b>	<b>1.42</b>	<b>520</b>	<b>550</b>	
<b>Erlistoun</b>	<b>2.7</b>	<b>2.36</b>	<b>203</b>	<b>608</b>	<b>Mine plan</b>
<b>Rosemont</b>	<b>8.7</b>	<b>1.73</b>	<b>487</b>	<b>628</b>	<b>DFS</b>
<b>Total</b>	<b>58.1</b>	<b>1.54</b>	<b>2,870</b>		

Note: 1. full breakdown in accordance with JORC in Appendix 1. 2. before royalties

# GOLD PRODUCTION OUTLOOK



## PROJECT STATUS

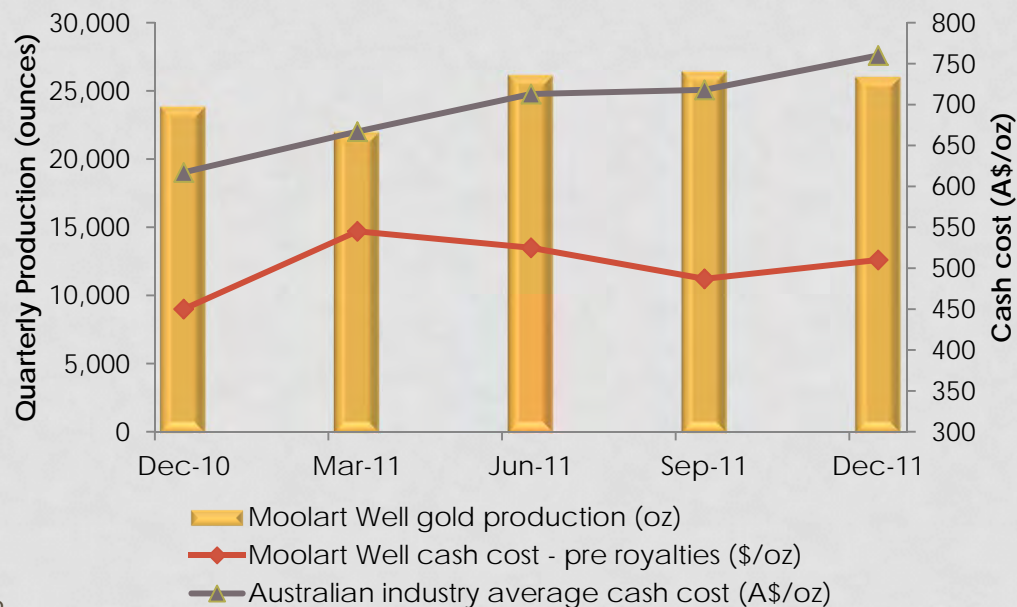
- Moolart Well – producing
- Garden Well – under construction, production in Sept 12 qtr
- Rosemont – DFS, target construction late 2012
- Erlistoun – satellite mine due to commence FY2014

**Significant organic production growth**

# MOOLART WELL

- Plant commissioned August 2010
- Dec11 quarter 26,025oz at A\$510/oz<sup>1</sup>
- Mill throughput >25% above design
- > 1yr ore supply grade controlled in pit
- Negligible ongoing capex

**Reliable, low cost production generating strong cash-flow**

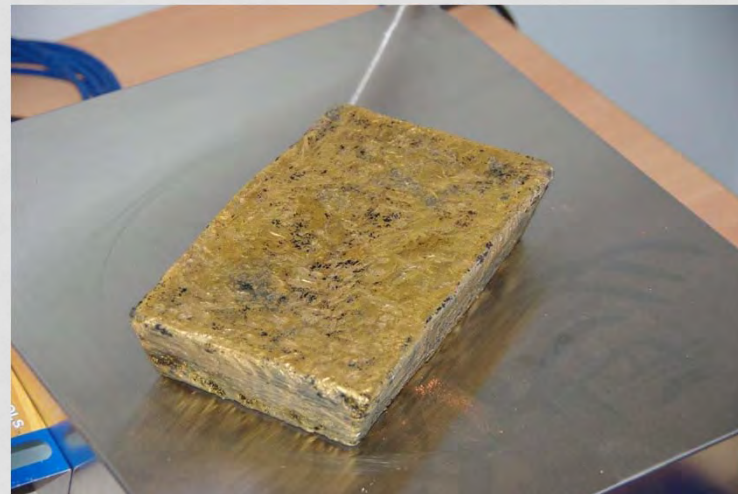


Stage	Producing
Mine type	Open pit
Mineralisation	Laterite & oxide
Plant type	Crush, grind, CIL
Throughput	2.5mtpa
Average grade	1.4g/t gold
Recovery	>92%
FY12 production	95 – 105koz
FY12 cash cost	A\$540 – 590/oz <sup>1</sup>
Mine life	5 years
Ore reserves	520koz <sup>2</sup>
Mineral resources	2.2Moz <sup>2</sup>

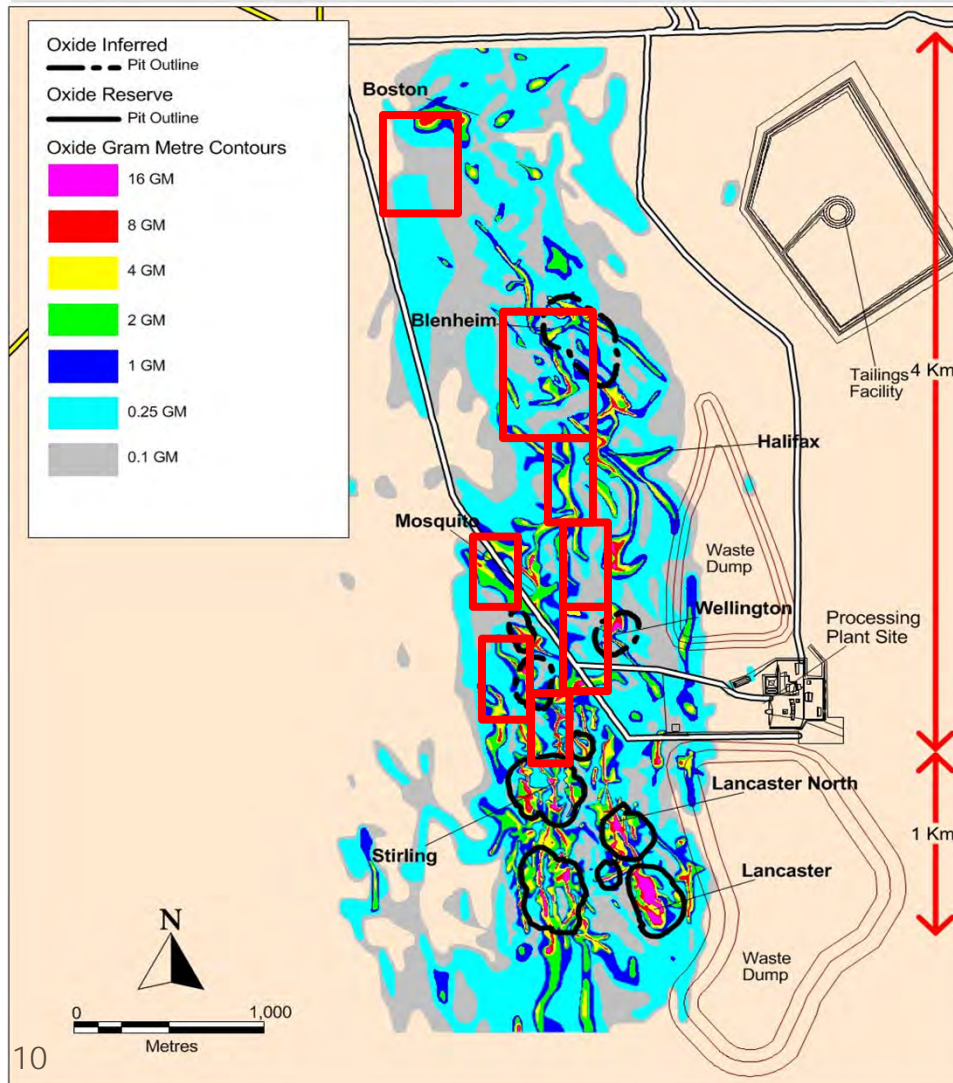
#### Notes

- 1 pre royalty cash cost. 2 full breakdown in Appendix 1 & 2
3. Detail operating stats by quarter for MW in Appendix 3

# MOOLART WELL OPERATIONS



# MOOLART WELL OXIDE ZONE DRILLING



- 5km of laterite (20m deep) pits
- Oxide zone between 20-80m below surface:
  - Oxide resources 577koz<sup>1</sup>
  - Oxide reserves 153koz<sup>1</sup>
- All oxide reserves in southern 1km
- 70,000m of oxide drill-out ongoing
- Incremental reserve ounces likely

**Goal to keep the Moolart Well mine life at 5-6 years for as long as possible**

**Note 1:** full breakdown in Appendix 1 & 2

# GARDEN WELL

- Virgin discovery by Regis in late 2009
- 30km south of Moolart Well
- Production to commence in Sept 12 qtr
- \$109m capex budget (\$70m spent)
- Excellent metallurgical & physical characteristics across ore types
- Licensed for construction & operations
- LOM production >200kozpa at A\$555/oz cash cost<sup>1</sup>

**Major gold discovery moving to long term, low cost gold mine**

Stage	Construction
Mine type	Open pit
Mineralisation	Mixed ultramafic-sediment shear
Plant type	Crush, grind, CIL
Throughput	4mtpa nameplate
Reserve grade	1.46g/t gold
Recovery	95% <sup>2</sup>
FY13 production	247koz <sup>2</sup>
FY13 cash cost	A\$400/oz <sup>12</sup>
Mine life	9 years
Ore reserves	1.66Moz <sup>3</sup>
Mineral resources	2.56Moz <sup>3</sup>

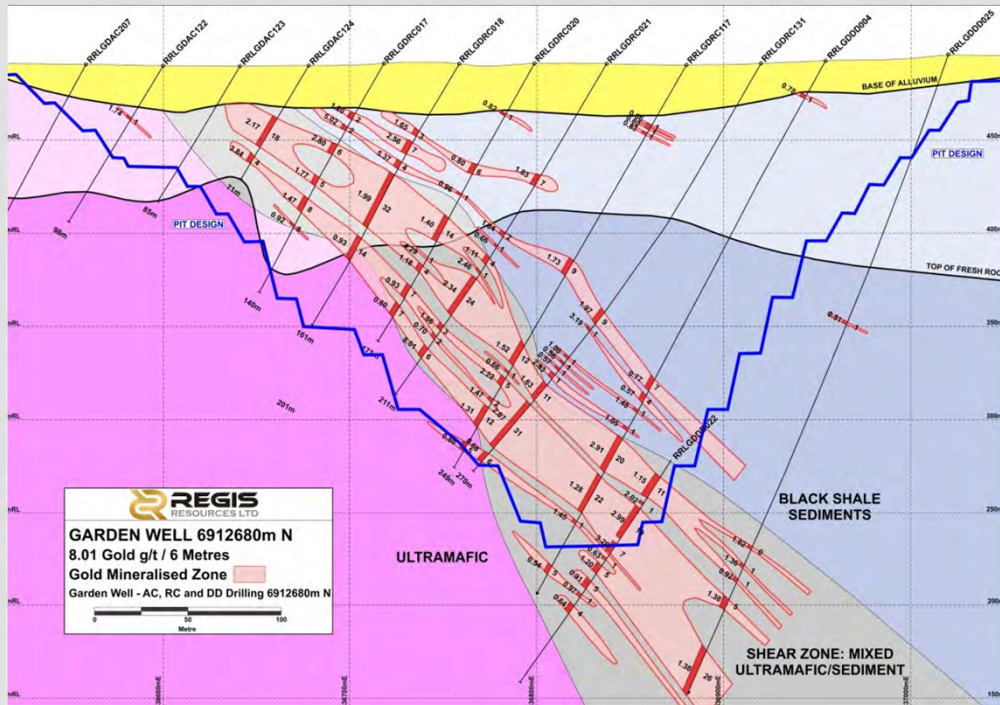


**Notes** 1. forecast pre royalty cash cost. 2. DFS forecast  
3. Full breakdown in Appendix 1 & 2

# GARDEN WELL CONSTRUCTION



# GARDEN WELL ORE-BODY



## High Grade Intersections

73m at 3.61g/t from 51m

69m at 4.26g/t from 42m

39m at 4.54g/t from 56m

44m at 3.65g/t from 65m

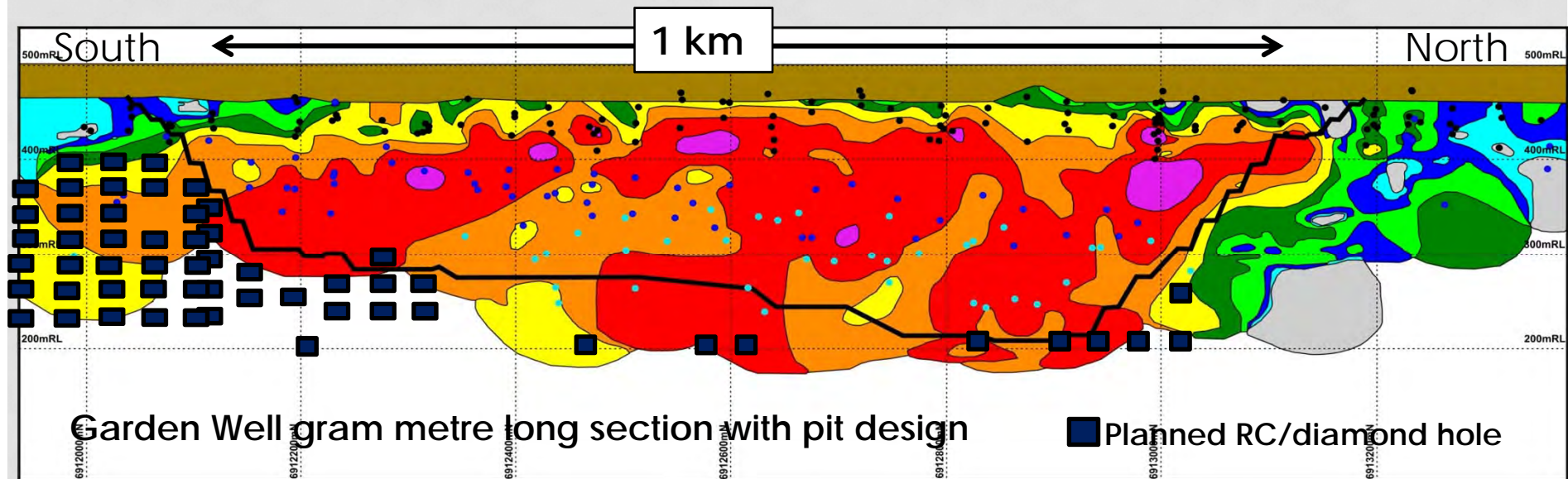
19m at 3.99g/t from 32m

89m at 2.30g/t from 43m

33m at 3.17g/t from 71m

- High grade oxide zone boosts early production
- 45 degree dip of ore-body reduces stripping ratio (current pit 3.3:1)
- Wide zones of mineralisation
- Staged pit development - opportunity for cutback to mine below pit resources

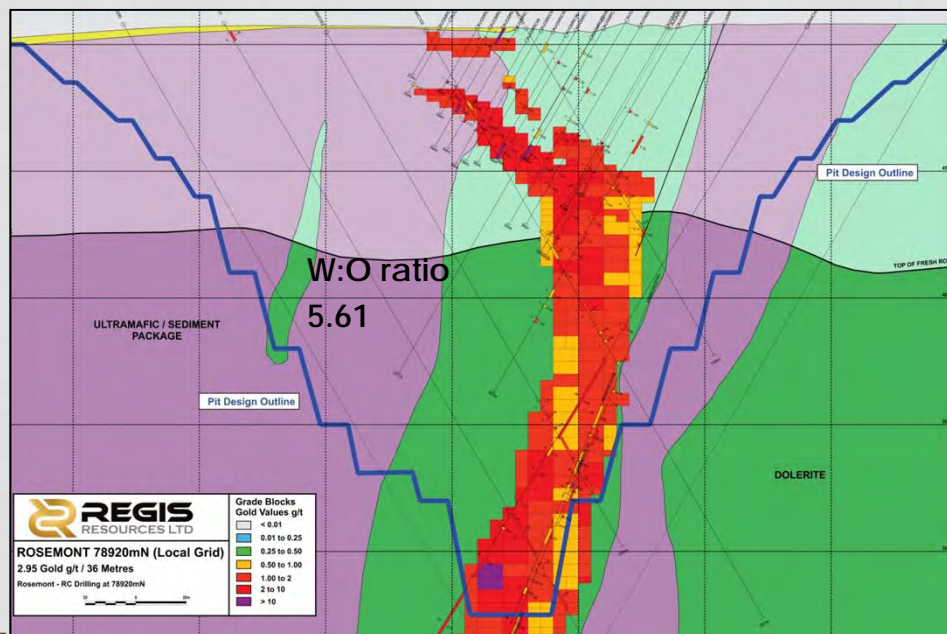
# GARDEN WELL RESOURCE EXTENSION DRILLING



- 2012 drilling programme underway, focussing on:
  - Southern high grade zone
  - Southern extension
- Targeting:
  - Resource increase
  - Extension of pit deeper on high grade zone and further to south

# ROSEMONT

- 9 kilometres north west of Garden Well
- DFS underway on crush & grind at pit and pump ore slurry to Garden Well
- Target:  
Construction Dec12 qtr ≈ A\$35m capex  
Fund construction from cash flow  
Production Sept13 qtr - 80kozpa



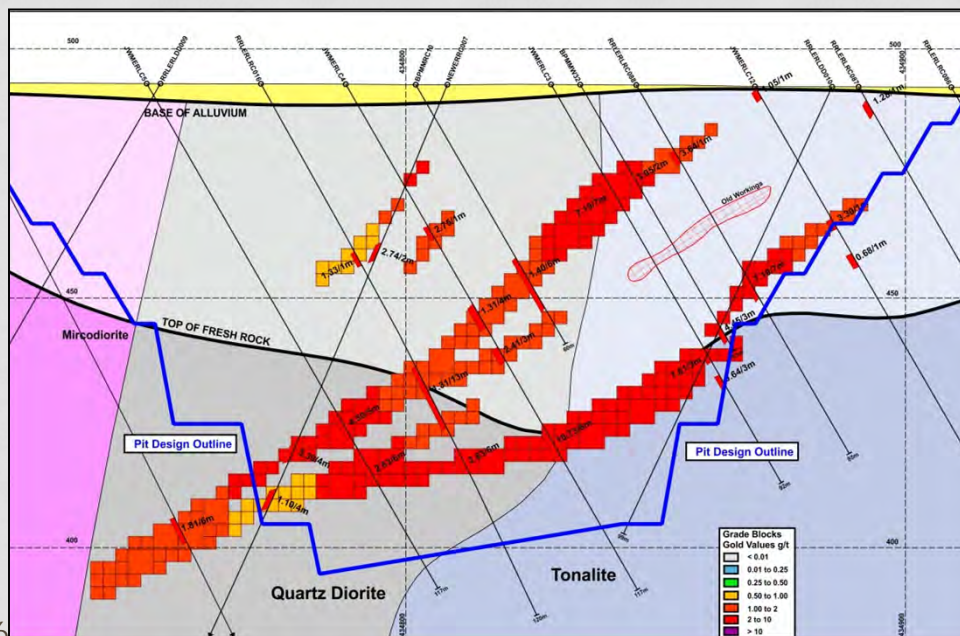
Stage	DFS
Mine type	Open pit
Mineralisation	Quartz hosted stockwork
Plant type	Crush, grind, pump
Throughput	1.5mtpa
Reserve grade	1.73g/t gold
Recovery	95%
LOM production	80kozpa
LOM cash cost	A\$628/oz <sup>1</sup>
Mine life	6 years
Ore reserves	487koz <sup>2</sup>
Mineral resources	1.08Moz <sup>2</sup>

#### Notes

1 forecast pre royalty cash cost. 2 full breakdown in Appendix 1 & 2

# ERLISTOUN

- 7 kilometres south of Garden Well
- Mining tender in process
- Mine in 2014 – 2016
- Truck to Garden Well plant
- Displace GW ore from mill at  $\approx 900\text{ktpa}$  for incremental production of 20kozpa

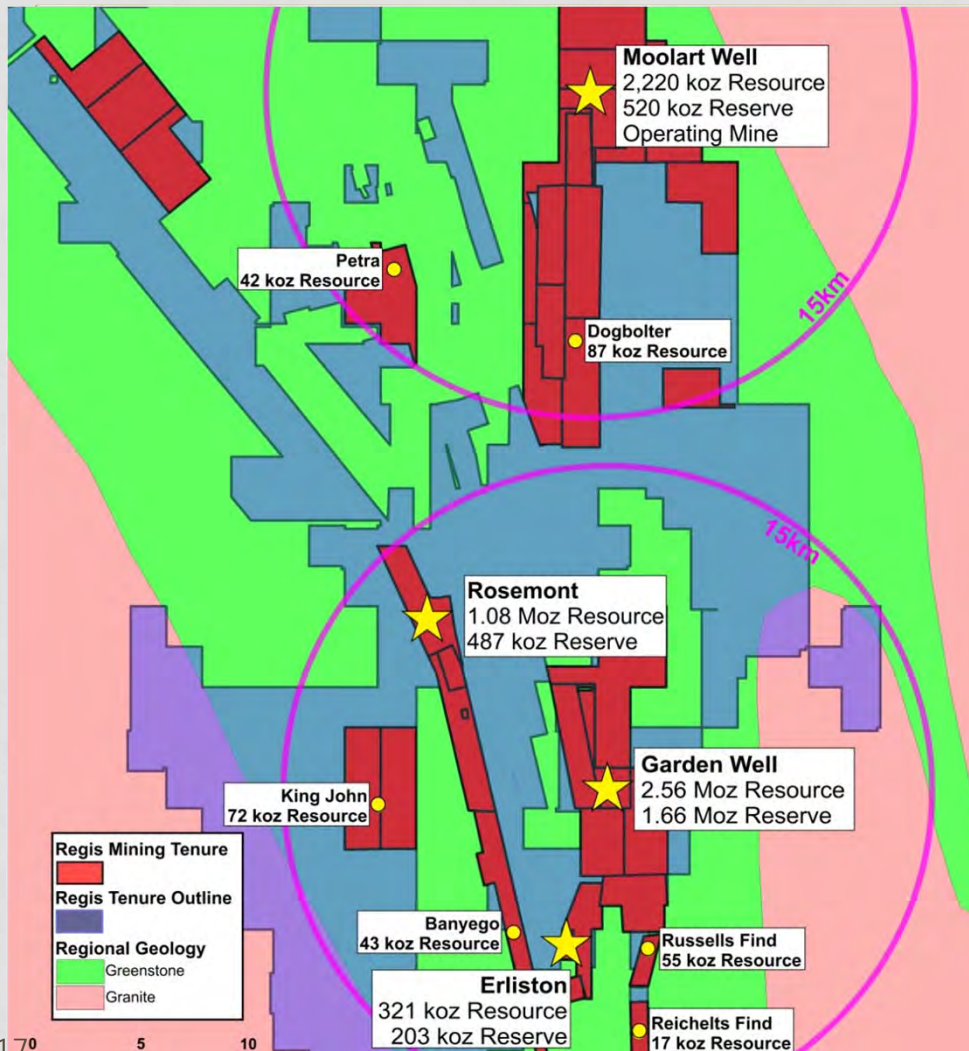


Stage	Mine scheduling
Mine type	Open pit
Mineralisation	Quartz hosted stockwork
Processing	Truck to GW plant
Mining rate (ore)	$\approx 900\text{kT pa}$
Reserve grade	2.36g/t gold
Recovery	95%
LOM production	65kozpa
LOM cash cost	A\$608/oz <sup>1</sup>
Mine life	3 years
Ore reserves	203koz <sup>2</sup>
Mineral resources	321koz <sup>2</sup>

#### Notes

1 forecast pre royalty cash cost. 2 full breakdown in Appendix 1 & 2

# SATELLITE RESOURCES



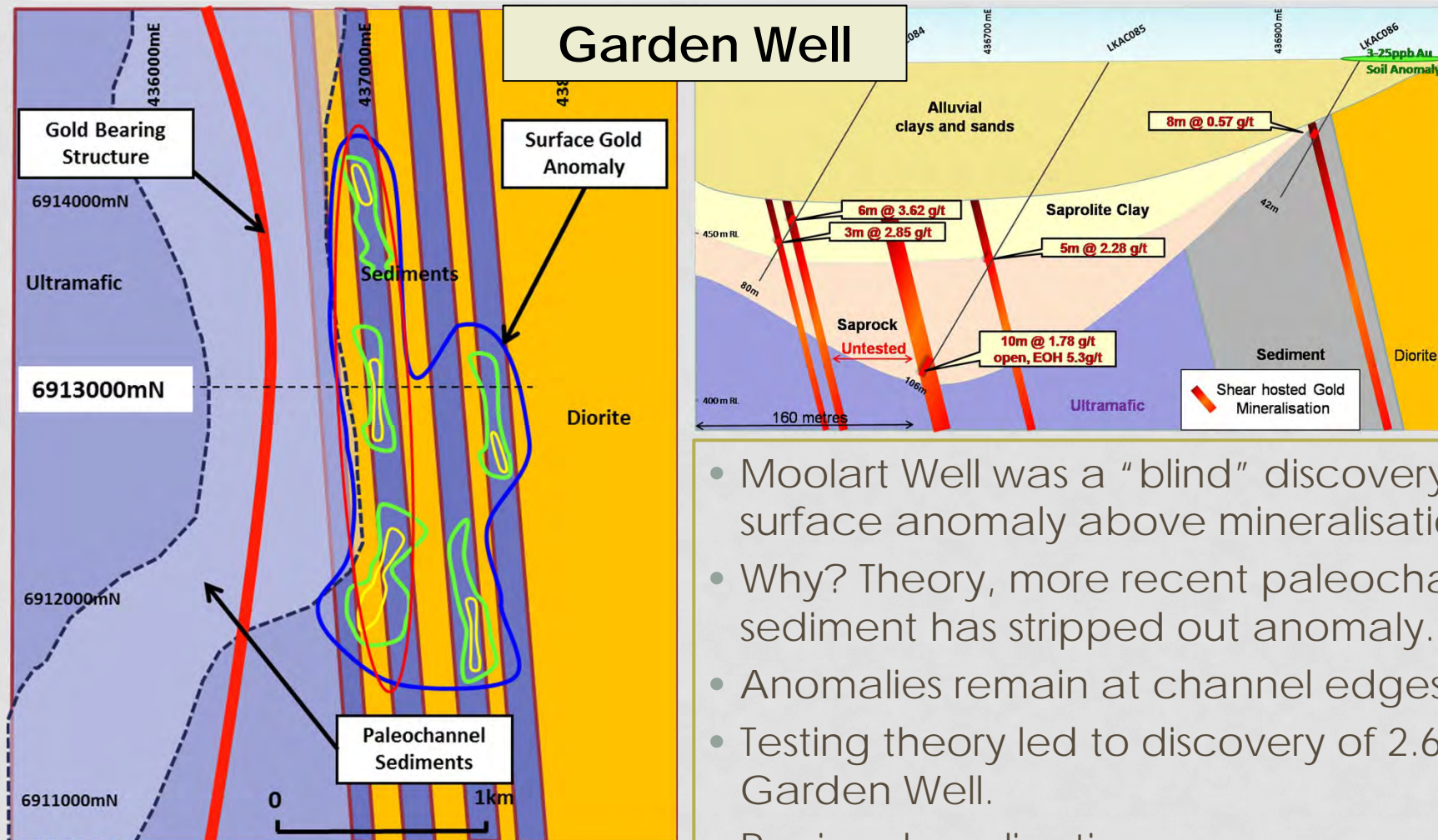
Number of deposits	6
Mineral resources	316koz <sup>2</sup>
Stage	Resource extension & optimisation
Mine type	Open pit
Processing	Truck to 3 plants

- Satellite projects – none more than 15km from a Regis processing plant.
- Require resource drill outs and pit optimisation studies.
- Targeting resource extension and reserve conversion.
- Incremental mill feed to three mills in district.

#### Notes

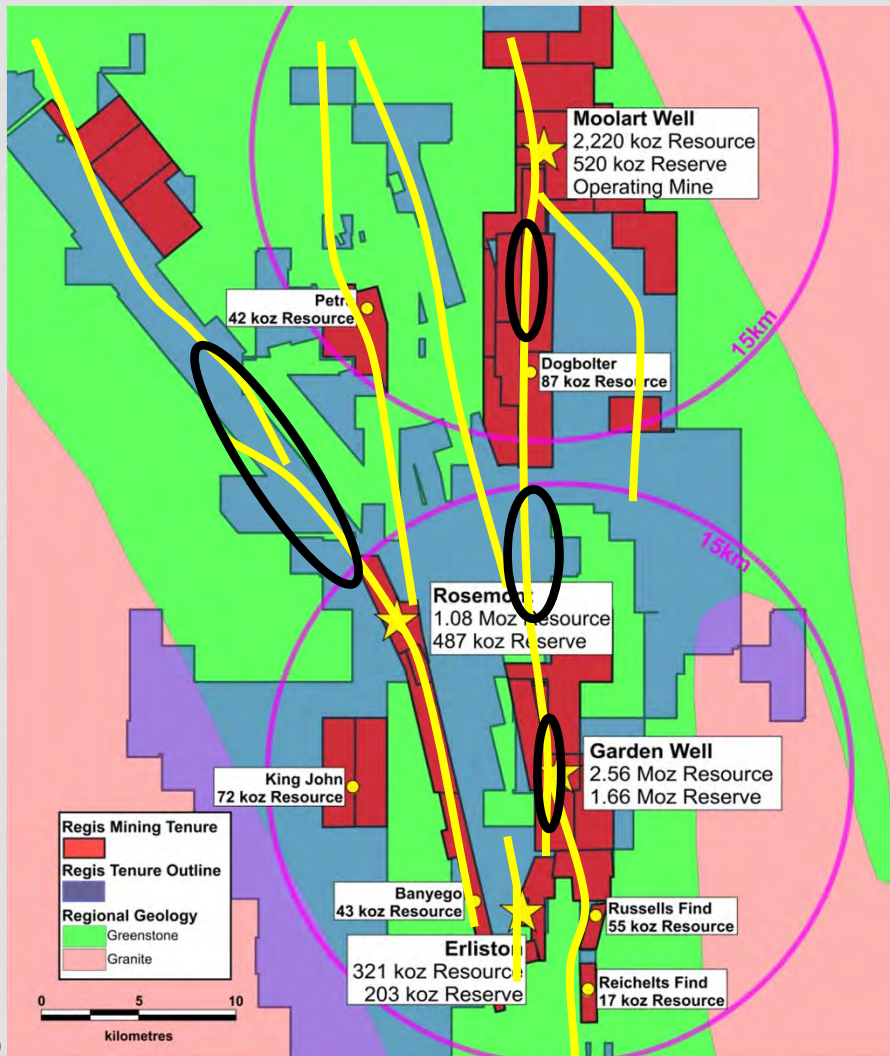
1 forecast pre royalty cash cost. 2 full breakdown in Appendix 1 & 2

# EXPLORATION THESIS



- Moolart Well was a “blind” discovery – no surface anomaly above mineralisation.
- Why? Theory, more recent paleochannel sediment has stripped out anomaly.
- Anomalies remain at channel edges.
- Testing theory led to discovery of 2.6Moz Garden Well.
- Regional application.

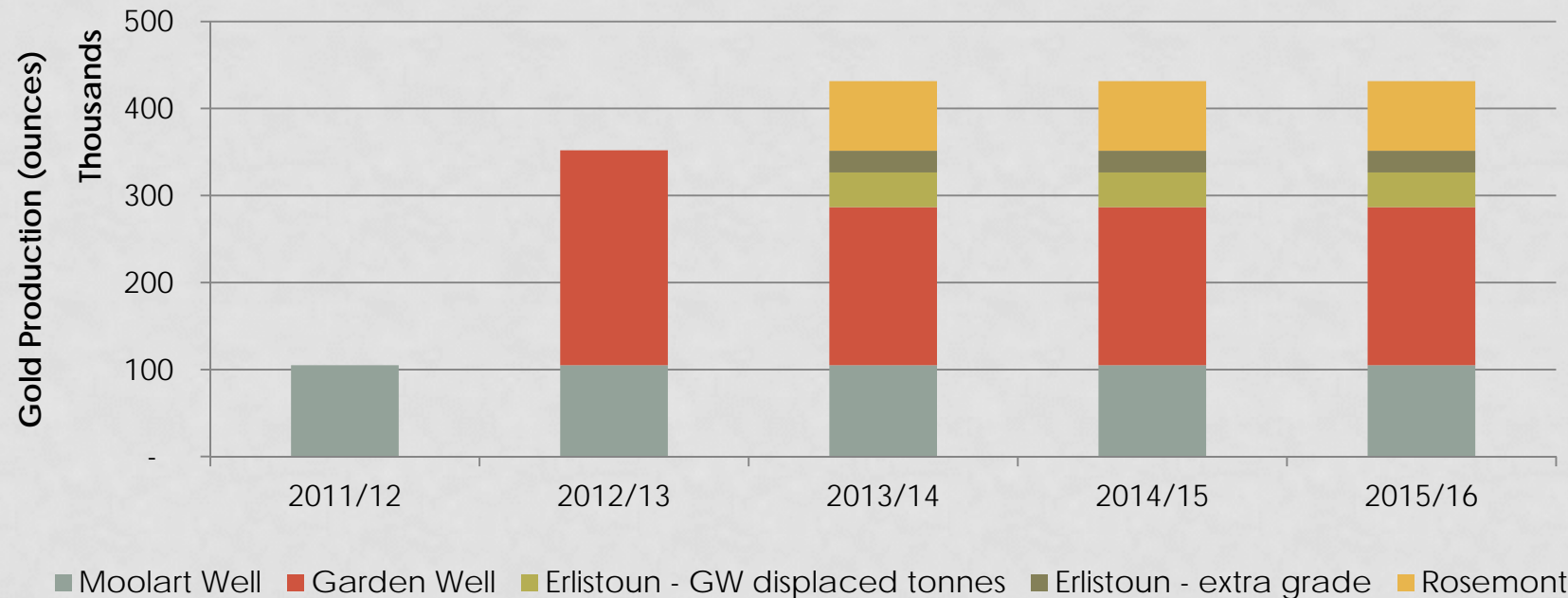
# REGIONAL EXPLORATION



- Testing theory regionally
- Targeting areas:
  - Max 30m of paleochannel cover
  - No previous effective drilling
- Numerous drill targets.
- Recent results at Anchor South:
  - 8m @ 5,42g/t
  - 9m @ 3.46g/t
  - 12m @ 2.19g/t
- 2012 regional drilling budget 90,000 metres / \$5 million

**Excellent scope for further discovery ► value - 3 mills in district**

# REGIS IN SUMMARY



- Current business generating strong cash-flow
- Organic, fully funded growth to beyond 400koz pa
- Low cash cost, negligible sustaining capex
- ►► Should culminate in exceptional cashflow 2012-14 (& beyond)
- Significant resource growth and exploration opportunities

**High quality Australian growth gold business**

# APPENDIX 1

## JORC RESERVES 30 JUNE 2011

Project	Proven			Probable			Total			Cut-off Grade g/t
	MT	grade g/t	gold koz	MT	grade g/t	gold koz	MT	grade g/t	gold koz	
<b>Garden Well</b>				35.3	1.46	1,660	35.3	1.46	1,660	0.60
<b>Moolart Well</b>										
Laterite	7.8	1.31	335	1.0	1.00	32	8.8	1.30	367	0.50
Oxide	1.4	1.64	75	1.2	2.02	78	2.6	1.82	153	0.50
<b>Total Moolart Well</b>	<b>9.2</b>	<b>1.39</b>	<b>410</b>	<b>2.2</b>	<b>1.56</b>	<b>110</b>	<b>11.4</b>	<b>1.42</b>	<b>520</b>	
<b>Erlistoun</b>	<b>1.3</b>	<b>2.34</b>	<b>95</b>	<b>1.4</b>	<b>2.37</b>	<b>108</b>	<b>2.7</b>	<b>2.36</b>	<b>203</b>	<b>0.70</b>
<b>Rosemont</b>				8.7	1.73	487	8.7	1.73	487	0.50
<b>Total Reserves</b>	<b>10.5</b>	<b>1.50</b>	<b>505</b>	<b>47.6</b>	<b>1.55</b>	<b>2,365</b>	<b>58.1</b>	<b>1.54</b>	<b>2,870</b>	

- Note 1 - all reserves other than Rosemont quoted at 30/6/11. Note 2 - Tonnes and Ounces are rounded, rounding errors may occur.
- MT = million tonnes, g/t = gold grade in grams per tonne, koz = thousands of ounces

# APPENDIX 2

## JORC RESOURCES 30 JUNE 2011

Project	Measured			Indicated			Inferred			Total Resources			Cut-off Grade g/t
	MT	g/t	gold koz	MT	g/t	gold koz	MT	g/t	gold koz	MT	g/t	gold koz	
<b>Moolart Well</b>													
Laterite	9.8	1.45	459	1.0	0.90	29	0.3	0.88	8	11.1	1.39	496	0.50
Oxide	1.2	1.85	71	3.9	1.52	192	6.7	1.45	314	11.9	1.51	577	0.50
Sulphide							2.4	1.37	108	2.4	1.37	108	1.00
Low Grade	4.0	0.42	54	13.9	0.47	212	48.5	0.50	774	66.4	0.49	1040	0.3
<b>Total Moolart Well</b>	<b>15.0</b>	<b>1.21</b>	<b>584</b>	<b>18.8</b>	<b>0.72</b>	<b>433</b>	<b>58.0</b>	<b>0.65</b>	<b>1,204</b>	<b>91.8</b>	<b>0.75</b>	<b>2,220</b>	
<b>Garden Well</b>				<b>44.7</b>	<b>1.33</b>	<b>1,914</b>	<b>17.2</b>	<b>1.2</b>	<b>644</b>	<b>61.9</b>	<b>1.29</b>	<b>2,558</b>	<b>0.50</b>
<b>Erlistoun</b>	<b>2.3</b>	<b>1.92</b>	<b>143</b>	<b>3.0</b>	<b>1.88</b>	<b>179</b>				<b>5.3</b>	<b>1.90</b>	<b>321</b>	<b>0.50</b>
<b>Satellite Deposits</b>													
Dogbolter							0.9	2.91	87	0.9	2.91	87	1.00
Rosemont				14.6	1.68	793	6.7	1.3	285	21.3	1.57	1,078	0.50
King John							0.7	3.18	72	0.7	3.18	72	1.00
Russells Find							0.4	3.84	55	0.4	3.84	55	1.00
Baneygo							0.8	1.70	43	0.8	1.70	43	0.50
Reichelts Find				0.1	3.69	17				0.1	3.69	17	1.00
Petra							0.4	3.12	42	0.4	3.12	42	2.00
<b>Total Satellite Deposits</b>				<b>14.7</b>	<b>1.71</b>	<b>810</b>	<b>9.9</b>	<b>1.83</b>	<b>584</b>	<b>24.6</b>	<b>1.76</b>	<b>1,394</b>	
<b>Total</b>	<b>17.3</b>	<b>1.31</b>	<b>727</b>	<b>81.2</b>	<b>1.28</b>	<b>3,336</b>	<b>85.1</b>	<b>0.89</b>	<b>2,432</b>	<b>183.6</b>	<b>1.10</b>	<b>6,493</b>	
<b>Regis share</b>												<b>6,471</b>	

errors may occur.

- MT = million tonnes, g/t = gold grade in grams per tonne, koz = thousands of ounces

## APPENDIX 3 MOOLART WELL QUARTERLY OPERATING STATS

	Dec11 Quarter	Sept 11 Quarter	Jun 2011 Quarter	Mar 11 Quarter	Dec 10 Quarter
Ore mined (tonnes)	621,862	657,919	619,239	598,048	500,663
Ore milled (tonnes)	644,179	636,812	636,058	580,495	475,296
Grade (g/t)	1.34	1.40	1.44	1.28	1.68
Recovery (%)	94	92	89	92	93
Production (oz)	26,025	26,477	26,189	22,005	23,851
Cash cost (A\$/oz)	510	487	525	545	450
Cash cost including royalties (A\$/oz)	589	554	589	599	514