

ASX ANNOUNCEMENT

June 2014 Quarterly Activities Report



Rumble Resources Ltd

Level 1, 33 Richardson Street,
West Perth, WA 6005

T +61 8 6555 3980

F +61 8 6555 3981

rumbleresources.com.au

ASX RTR

Executives & Management

Mr Shane Sikora
CEO

Mr Terry Topping
Executive Director

Mr Andrew McBain
Non-executive Director

Mr Matthew Banks
Non-executive Director

Mr Michael Smith
Non-executive Director

Mr David Palumbo
Company Secretary

Highlights

Fraser Range Projects

- Detailed Airborne Magnetic Survey Commenced in the Fraser Range
- Rumble Successful in Ballot For Fraser Range Tenement
- Rumble is now one of the largest ASX listed tenement holders in the Fraser Range
- Rumble owns a 100% interest in 8 out of the 9 Fraser Range tenements

Zanthus Project, Fraser Range

- Detailed aeromagnetic survey in the Fraser Range has defined high priority target areas only 25km's east of the Nova-Bollinger nickel copper massive sulphide discoveries in the Fraser Range, Western Australia
- Potential bedrock conductors increases from 3 to 7, follow up ground EM set to commence
- Multiple Nova Style "eye" features identified one coincident with a conductive body which is now a high priority ground EM
- A structural corridor was discovered with numerous large intrusive features and significant magnetic highs

Burkina Faso

- Rumble secured 85% of the Derosa Project

Rumble Resources Ltd ("Rumble" or "the Company") is pleased to provide an update of the Company's activities.

Rumble's activities were focussed on expanding and exploring its Fraser Range Projects, which are located in an emerging world class nickel province in Western Australia.

Primary Exploration Activities

Fraser Range Projects

Detailed airborne magnetic survey

Rumble commissioned a large airborne magnetic survey over its three main project areas. The program will provide detailed data at 50m line spaces for a total of 18,900km's flown. It has provided valuable geological information, including major structural features and intrusive bodies. It will also allow for a more detailed understanding of the local geology.

Block 1 - E69/2506 of the Zanthus Project

The area has been completed.

Block 2 - Thunderstorm Project - E28/2322 and the new rumble application EL28/2382

Preliminary Data Received.

Block 3 – Big Red Project E28/2268 and E69/3190

Preliminary Data Received.

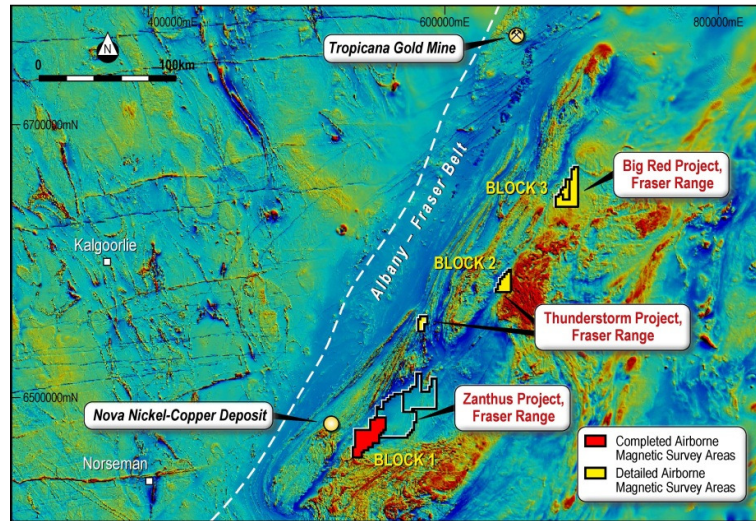


Figure 1 Locations of the 3 stages of the Detailed Airborne Magnetic Survey

Zanthus Project, Fraser Range

- EL 69/2506 - Granted - JV with Blackham Resources Ltd – Rumble to earn up to 75%
- ELA 28/2464 - Application - Rumble owns 100%
- ELA 28/2466 - Application - Rumble owns 100%

Rumble completed a strategic tenement application ELA 28/2466 adjoining the existing Zanthus Projects which adjoins the existing Zanthus Project E69/2506 & E28/2464) located only 18km to the east of the world class Nova-Bollinger Nickel Copper Sulphide discoveries of Sirius Resources NL (ASX: SIR). The new exploration license increases the Zanthus Project area to 1363 square kilometres. The Company considers the eastern side of the Fraser Range to be highly prospective for further world class Nickel-Copper discoveries with the new application bordered by our Fraser Range Peers in Matsa and Mark Creasy controlled private companies.

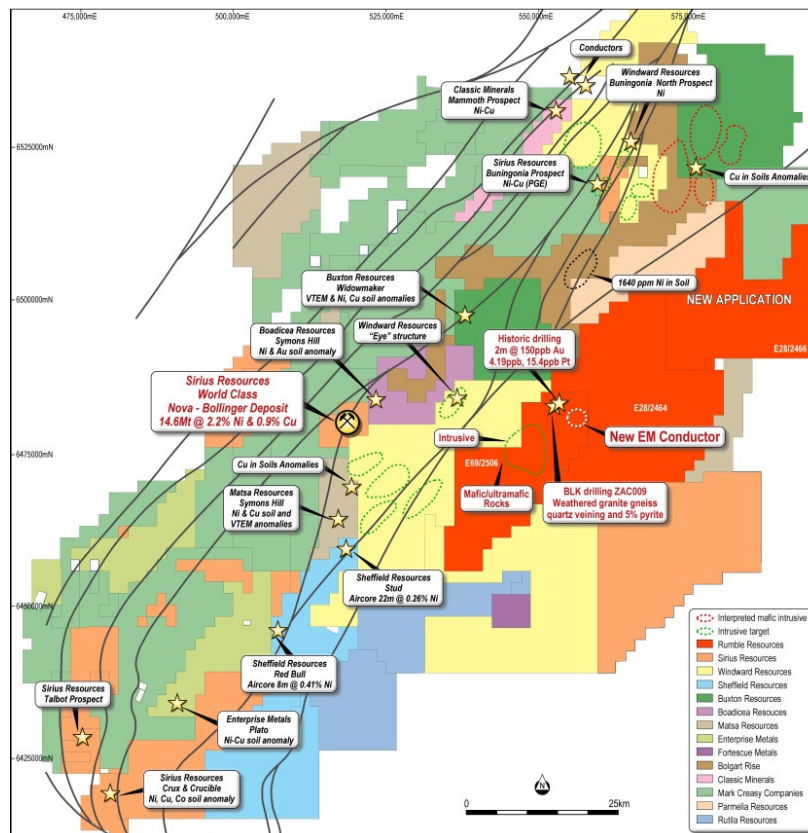


Figure 2 Zanthus Project Tenements highlighting the new tenement application

Completed detailed airborne magnetic survey - Block 1 - E69/2506 of the Zanthus Project

The interpretation of the completed detailed airborne aeromagnetic survey data on Zanthus (JV with Blackham Resources Ltd (ASX: BLK) was completed. This interpretation has identified numerous high priority targets including a significant “eye” feature, thought to be an intrusive body, co-incident with a conductive zone outlined from the reconnaissance ground EM program completed in April 2014. See ASX announcement (15/4/14 - Rumble identifies Bedrock EM Conductor 18km's from Nova).

The “eye” feature is interpreted as an elliptical magnetic rimmed intrusive body some 2km in length and up to 1km wide, a similar size to the Nova “eye” feature. It was crossed with a single line of the orientation ground EM survey which indicated the presence of a bedrock conductor. A more detailed survey is currently being planned to cover the whole “eye” feature with a more powerful moving loop survey similar to that recently completed by Sheffield Resources Ltd ASX announcement (ASX: SFX) 0707/14 - Large Bedrock Conductor Identified at Red Bull Ni-Cu Project).

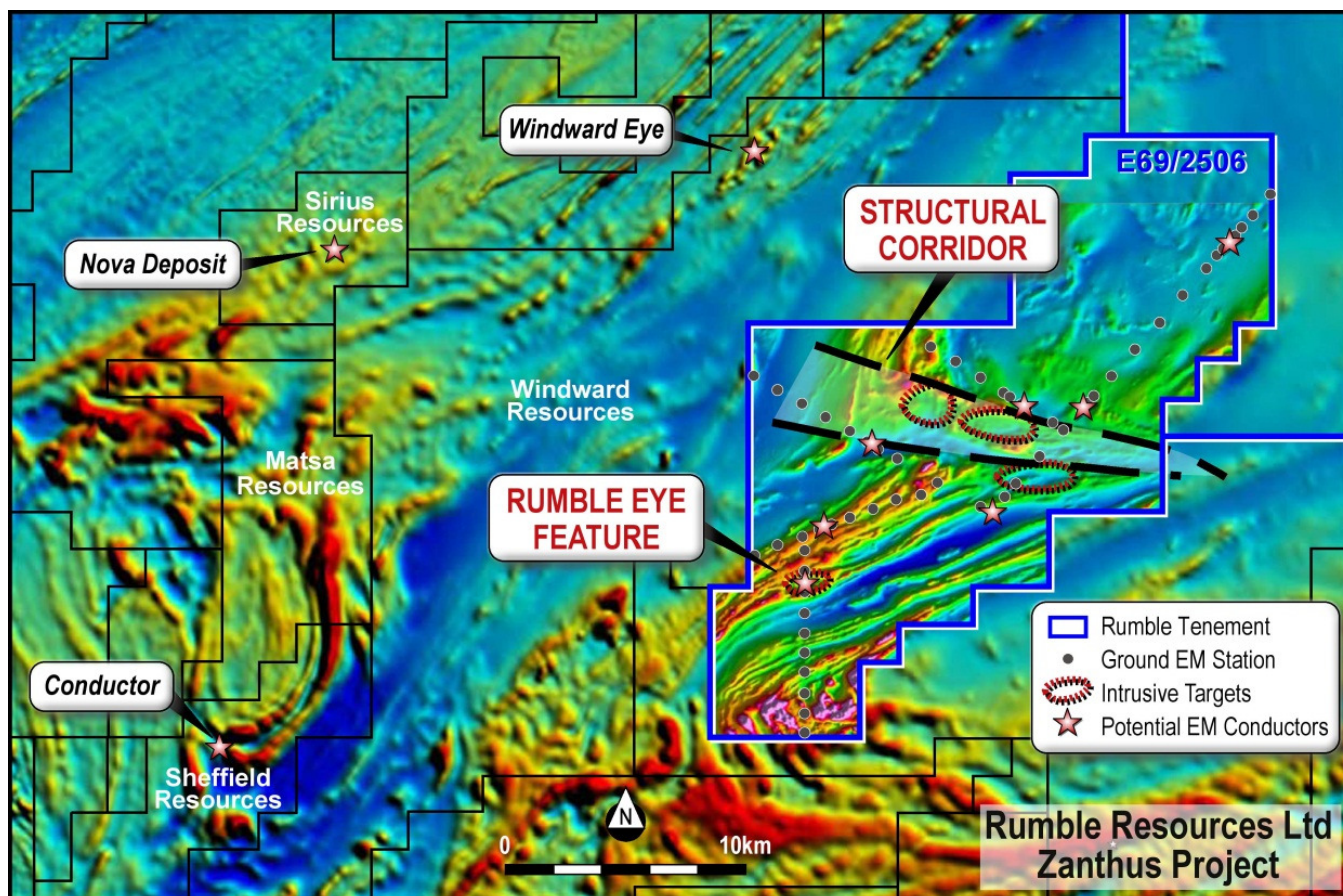


Figure 3 Zanthus Project Tenements highlighting the new tenement application

Eye Features

The detailed airborne aeromagnetic survey identified multiple Nova Style “eye” targets. “Eye” shaped magnetic features are indicators commonly associated with mafic intrusive complexes that host Ni-Cu-PGE ore bodies and are therefore priority targets for follow up ground EM as these ore bodies contain zones of massive sulphides which can be detected as strong conductors. The world class Nova Massive Sulphide Nickel Copper Discovery was found through drilling a bedrock conductor within an “eye” intrusive.

Structural Corridor

The Company also identified a significant structural corridor with numerous large intrusive features and significant magnetic highs. This zone is a significant structural break in the regional geology and covers a large area some 14km by 5km and will be a main focus area of next stage exploration which requires further ground based geophysics.

Previous Ground EM Survey Completed April 2014

Review of the previous Ground EM program completed in April this year has increased the identified potential bedrock conductors from 3 to 7. A high powered detailed ground EM survey will be required to further define the nature of these bedrock anomalies.

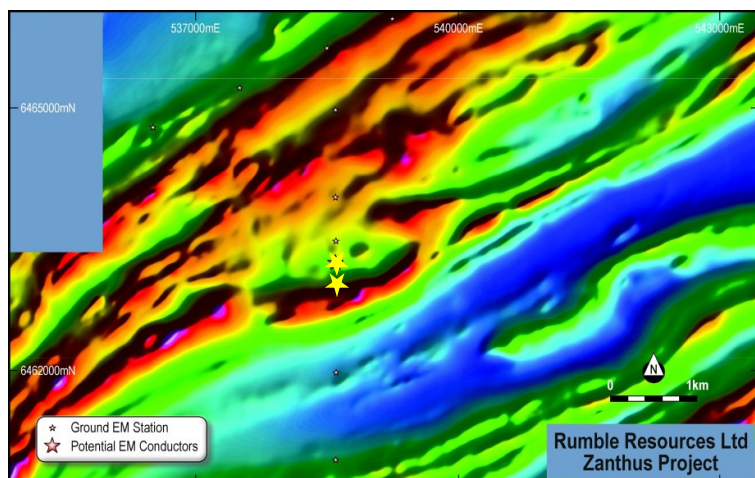


Figure 4: Images showing the Rumble Resources "Eye" feature with an identified conductor

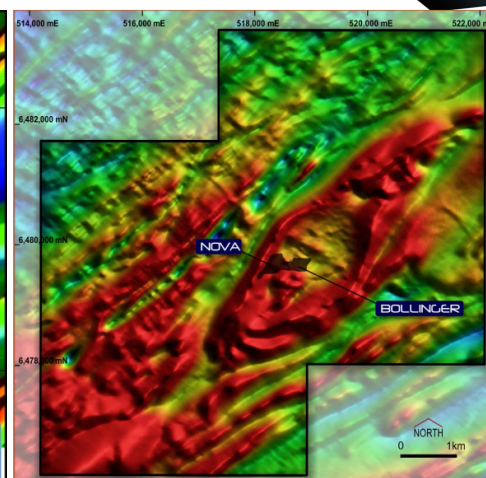


Figure 5: Image showing the Nova "Eye" feature

Ground EM Survey

The Company has identified seven priority target areas for its first detailed ground EM program on the Zanthus project. This high powered moving loop Ground EM survey is scheduled to start in August and will target the some of the recently discovered conductive bodies to ascertain the level of conductivity, strike, dip and depth of the bodies. Rumble will also be planning further ground EM programs over other large intrusive bodies interpreted from the magnetics data looking to identify further conductive bodies that may represent massive sulphides.

Following the completion of Ground EM Survey

The Zanthus project has cover sequences of between 30 and 50m so the most effective way to determine the lithologies present within the magnetic "eye" and other high priority target areas will be a program of shallow aircore drilling to intersect bedrock.

Air core drilling will be used interpret the geology of the area and to help in target generation from the magnetics data.

Thunderstorm Project, Fraser Range - RTR owns 100%

Rumble has newly named the central Fraser Range tenements the Thunderstorm Project.

- EL 28/2322 – Granted - Rumble owns 100%**
- ELA 28/2472 – Application - Rumble owns 100%**
- ELA 28/2471 – Application - Rumble owns 100%**
- ELA 28/2382 – Application - Rumble owns 100%**

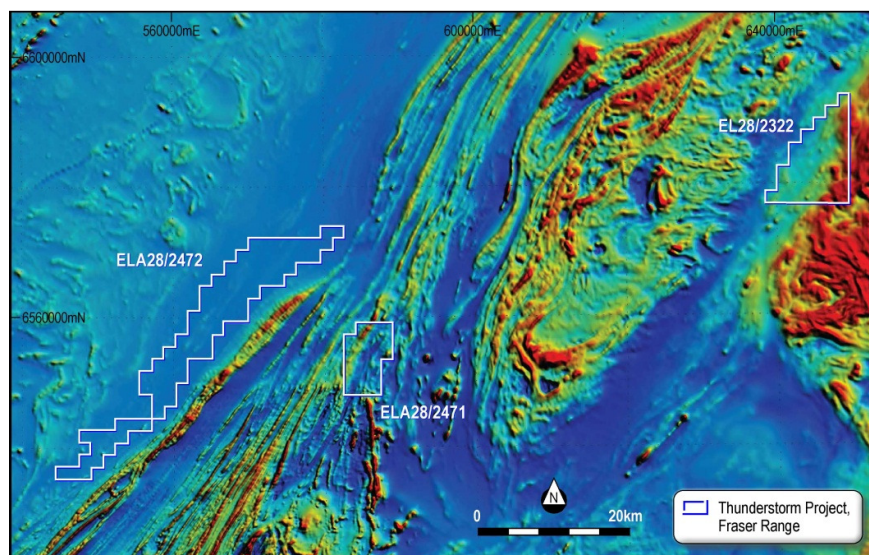


Figure 6 Thunderstorm Project Tenements



Rumble was successful in a ballot for the Fraser Range tenement ELA 28/2382. The Company was in a ballot with 10 other applicants which went before the wardens court on the 13th of June 2014. The new exploration license covers 59 Sq Km's. The new application is located on the same belt as the world class Nova-Bollinger Nickel Copper Sulphide discoveries of Sirius Resources NL (ASX: SIR). Previous exploration has been completed on the tenement with the Rumble technical team reviewing all the data to plan a systematic exploration program once granted.

Rumble was unsuccessful for ELA 28/2383 in a ballot.

Detailed airborne magnetic survey - Block 2

Preliminary Data Received for EL 28/2322 and ELA 28/2382 – See figure 1 for area flown.

Big Red Project, Fraser Range - RTR owns 100%

EL 69/3190 – Granted - Rumble owns 100%

EL 28/2268 – Granted - Rumble owns 100%

Detailed airborne magnetic survey - Block 3

Preliminary Data Received for EL 69/3190 and EL 28/2268 – See figure 1 for area flown.

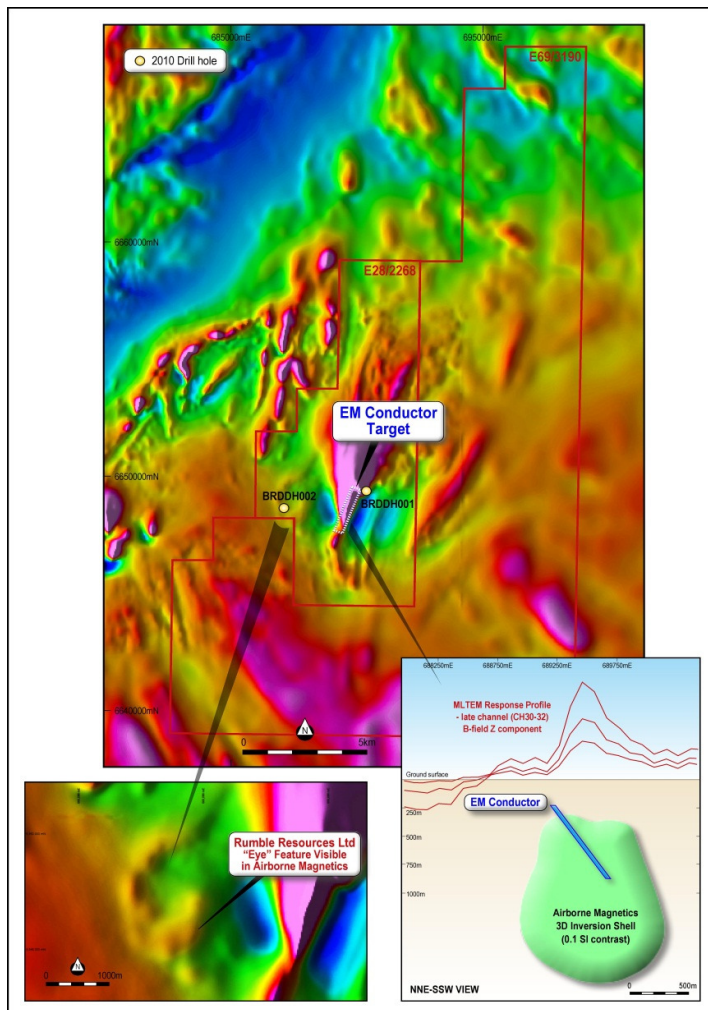


Figure 7 Highlighting the Big Red Bedrock Conductor and Eye Feature.

The Big Red Project has a significant bedrock conductor which is over 2km long. This very large bedrock conductor is of moderate conductance levels, commences at a depth of approximately 250m and dips to the East.

The conductive body is parallel to the local geology and the conductance levels are also increasing and becoming shallower to the north. It is also a magnetic high which is significant as pyrrhotite, the main constituent sulphide mineral of Nickel deposits, can be magnetic mineral. This is now a high priority target for the Company as the recent Mammoth Nickel Copper mineralisation, discovered by Classic Minerals (ASX:CLZ), is within a mafic sill of similar geometry to this EM conductor.

The exciting geological factors previously defined in the project area were the result of drilling completed by Teck Australia in 2010 and subsequent study on the drill core by the Geological Survey of Western Australia. This included the intersection of mafic gabbro sills in both Teck Australia drill holes. BRDDH001 & BRDDH002, which is also the host rock unit to the Nova and Bollinger nickel-copper sulphide deposits and interestingly also the host to nickel-copper sulphides intersected at the Mammoth target by Classic Minerals Ltd (ASX:CLZ) announced in December 2013.

Age dating of drill core returned crystallization ages of around 1.3 billion years which are consistent with age dates from within the Fraser Zone close to the Nova-Bollinger deposits. Hyperspectral logging (HyLogger) data from both Teck Australia drill holes has recently been received and will provide valuable data on the local geology adjacent to the conductive body

Beadell Project, Western Australia

EL 45/2405 – Granted - 80% RTR – 20% CXU

EL 45/4267 – Application - 100% RTR

ELA 45/4223 – Application - 100% RTR

ELA 45/4233 – Application - 100% RTR

ELA 45/4186 – Application - 100% RTR

No exploration was completed.

The Beadell Project is located 450km east of Newman in the Paterson Orogen of central north Western Australia. The Paterson Orogen is host to significant mineral deposits including the Telfer Gold Mine, Nifty Copper Mine and the Kintyre Uranium Deposit. The Proterozoic-aged Paterson Province is host to several significant operating mines and mineral deposits including the Telfer Gold Mine, Nifty Copper Mine, Maroochydore Copper Deposit and the Kintyre Uranium Deposit.

Recent exploration success in the area has been announced by Encounter Resources Ltd (ASX: ENR) with significant copper sulphide intersections at the BM1 and BM7 Prospects and anomalous zinc sulphide intersections at the BM2 Prospect. Encounter Resources Ltd currently have an earn in JV agreement with major copper producer Antofagasta PLC whereby they may earn an initial 51% of the project by expenditure of \$20 million over a 5 year period.

Venus Metals Ltd (ASX:VMC) recently announced a Major Drill Target Identified at their PM prospect which is to the east of the Beadell Project.

In December 2012, Rumble Resources Ltd completed a program of 16 RC drill holes, including 6 holes which had diamond tails. Five of the diamond holes were drilled at the Maxwell prospect and 1 was drilled at the Ninety Nine prospect for a total of 3,416 metres.

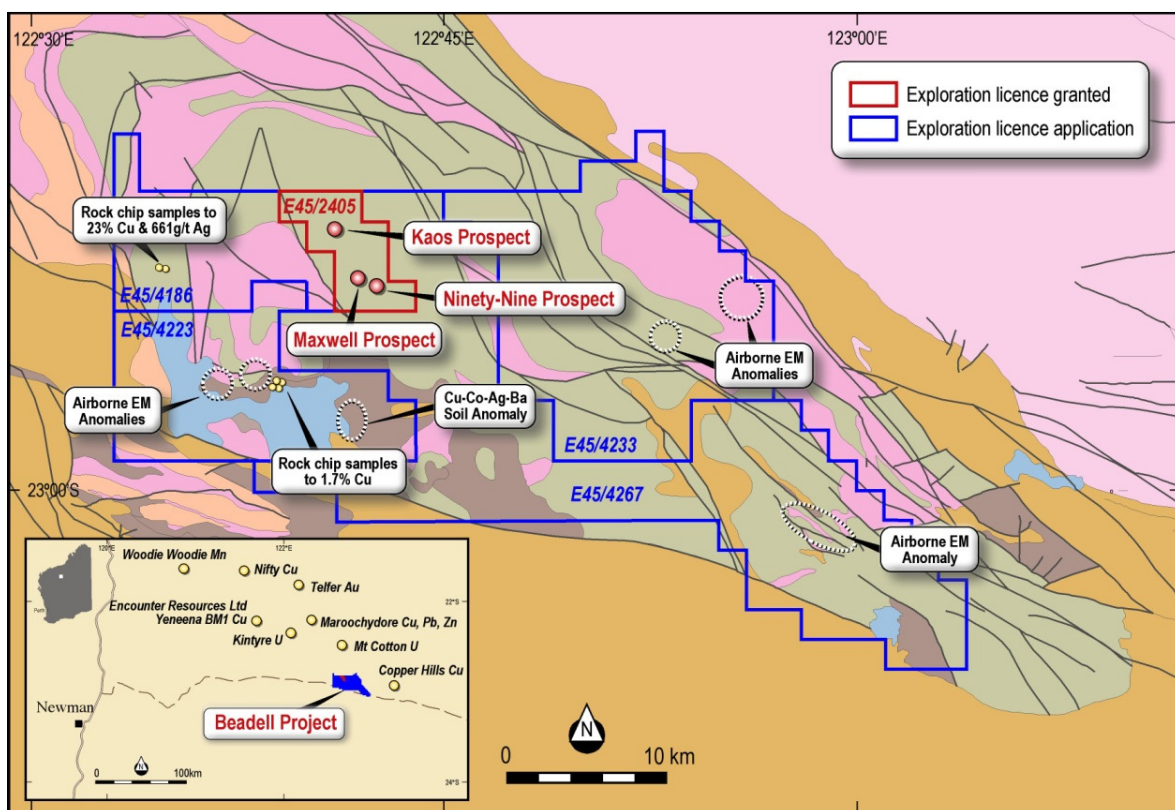


Figure 8: Beadell Project showing exploration licence holdings, prospects and new targets.

Maxwell Prospect

Results from the diamond and RC drilling program at Maxwell indicated there **was widespread anomalous zinc and lead mineralisation and localised copper mineralisation.**

Maxwell is a large mineralised system with widths up to 80m with 5% to 35% sulphides present. A total of 235 metres of sulphide mineralisation has been intersected across the 996 metres of diamond drilling at the Maxwell prospect. The recent drill program has confirmed the **targeted area is a large, tabular, high sulphide, anomalous zinc, lead and copper mineralised** body displaying characteristics of a Sedimentary Exhalative (SEDEX) system. The drilling only targeted the upper portion (**200m vertical depth**) of the larger EM conductive plate which extends to at least a **500m vertical depth** and is yet to be tested.

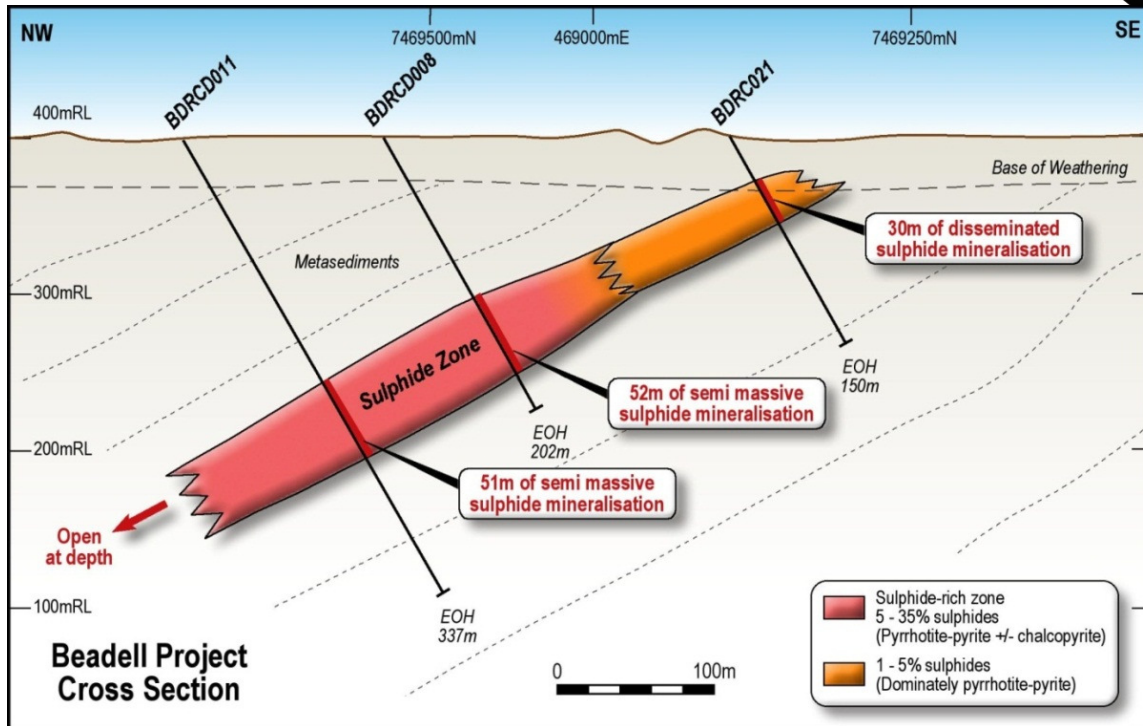


Figure 9: Maxwell Prospect Cross Section

The mineralisation at Maxwell is dominated by fine grained sulphides which are laminated and show a wide variety of textures including soft sedimentary deformation and slump structures. There are also zones of stockwork and stringer mineralisation which cross cut earlier sulphide mineralisation. The oriented diamond core has also provided a significant amount of information on the geometry of the mineralised system and though the rocks have undergone extensive regional metamorphism, bedding features useful to determine the stratigraphic sequence are still present.

The Company is now conducting a review of the geochemistry and has collected and sent samples for detailed petrographical analysis to better determine mineral associations to help understand the style of mineralisation. The initial results indicate that Maxwell is a large system with Sedimentary Exhalative (SEDEX) characteristics. These results have given the Company an indication that the Rudall Complex can host this style of mineralisation and has confirmed that the geophysics employed can locate these systems. Work is now being completed to continue exploration of this significant sedimentary sequence for copper, lead and zinc mineralisation.

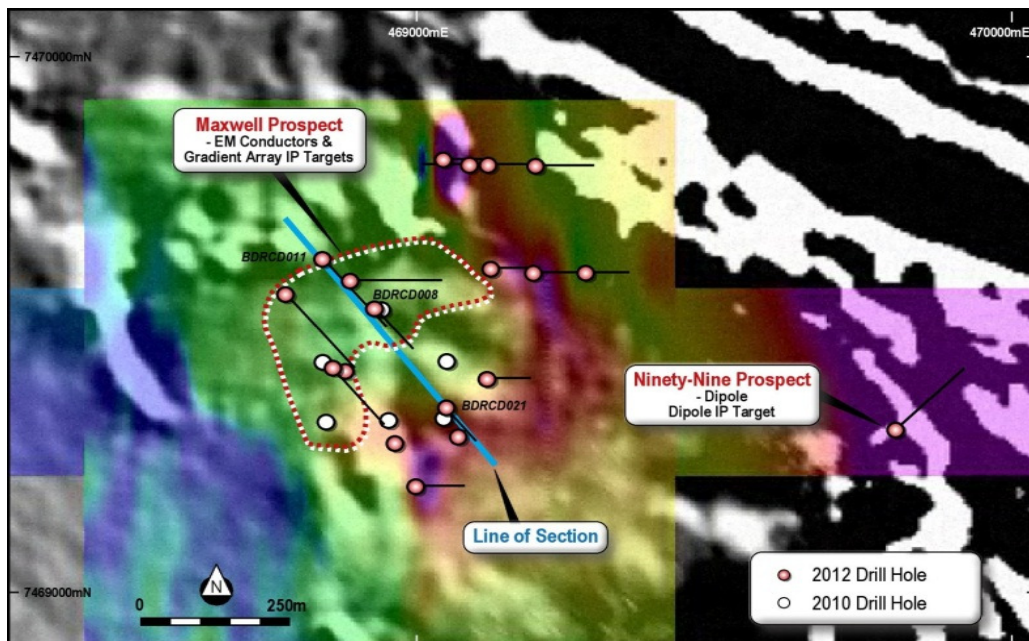


Figure 10: Maxwell EM and Ninety-Nine IP Prospects

Ninety Nine IP Survey

A dipole-dipole Induced Polarisation (IP) survey was completed in December 2013 at the Kaos and Ninety-Nine Prospects completing 4 lines for a total of 11.3 line km surveyed. These two prospects are markedly different targets. The Kaos Prospect is a 2.2 km long x 400m wide airborne EM anomaly whilst the Ninety-Nine Prospect is an IP chargeability high associated with a folded unit of highly magnetic banded iron formation. A single drill hole at Ninety-Nine in 2012 drilled through banded iron formation and potassic altered tonalities and gneisses but failed to intersect and explain the IP target. The drill hole returned some anomalous gold values, including 1m @ 0.75g/t and 2m @ 0.43g/t, and petrology identified the presence of the uranium mineral uranothorite, copper sulphide mineral chalcocopyrite and cerium mineral synchysite

In December 2013 at the Kaos Prospect an IP survey line was completed across the main airborne EM anomaly and lines completed at the Ninety-Nine Prospect to the east of Kaos were extended to the north to cross the Kaos stratigraphic position. The survey line across the main Kaos EM feature identified a moderate chargeable zone coincident with the airborne EM anomaly (Anomaly E) and also identified a deeper chargeable zone with no associated EM anomaly (Anomaly D; Figures 6 & 7). The lines that crossed the Kaos position to the east identified a highly chargeable zone which correlates with moderate conductivity and a magnetic high (Anomaly A). These targets have not been drill tested.

Three IP survey lines were completed at the Ninety-Nine Prospect where a single IP line was completed in 2012 identifying a highly chargeable zone associated with a magnetic high. The three IP lines undertaken in December 2013 were oriented better to define the chargeable zone. The survey identified two very highly chargeable zones (Anomalies B & C) with moderate conductivity and associated magnetic high with one on either side of a northwest trending fold.

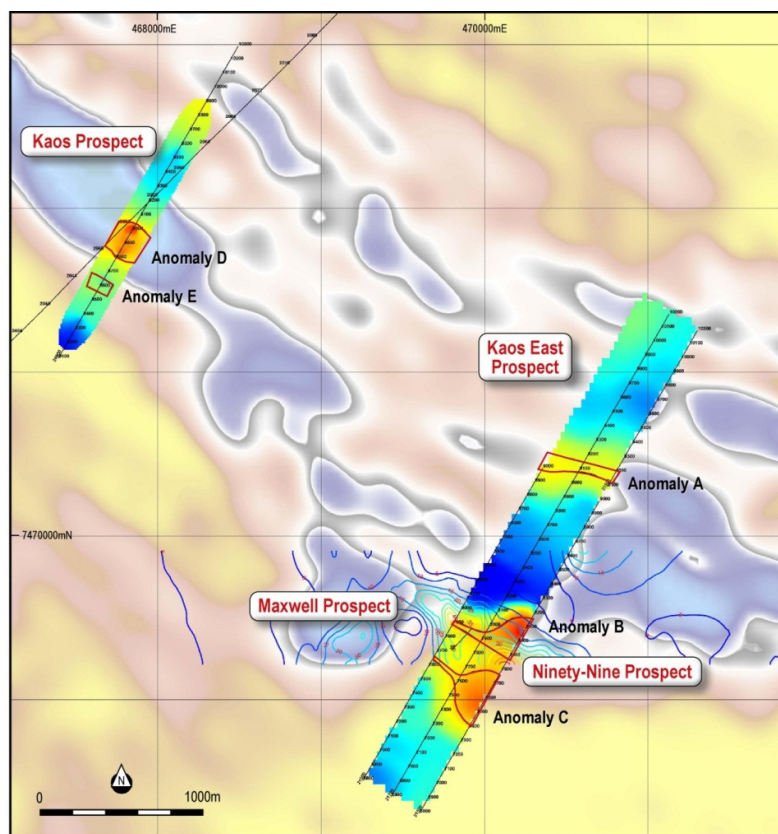


Figure 11: IP traverse lines showing newly generated IP Anomalies (A to E) with conductivity as background.

The IP anomalies identified are summarised below:

Anomaly A - is a new strongly chargeable response to the east of Kaos which correlates with moderate conductivity (>15 mV/V), and a magnetic high.

Anomaly B - is the chargeable response previously defined at Ninety-Nine Prospect in 2012. It is very strongly chargeable (>50 mV/V), moderately conductive, and correlates with a magnetic and topographic high on the northern side of a fold. Drill hole BDRCD022 failed to intersect this strong chargeable zone.

Anomaly C - is a newly defined, very strong chargeable high (>50 mV/V), at the Ninety-Nine Prospect, moderately conductive, and correlates with a magnetic and topographic high.

Anomaly D - a shallow moderately chargeable response at the Kaos Prospect was coincident with the shallow airborne EM conductor (15 to 20 mV/V).

Anomaly E - A stronger deeper chargeable response was identified at the Kaos Prospect which has no airborne EM conductive response (40 mV/V).

Additional Targets on the Beadell Project

In 2013 Rumble lodged three new Exploration Licence Applications (E45/4223, E45/4233 & E45/4267) at the Beadell Project increasing the projects size to a combined area of 920 km² and significantly increasing the projects prospectivity.

Recent review of the data compilation and new application areas which included processing of a 2007 Airborne EM survey undertaken by Geoscience Australia across the Paterson Province, ground reconnaissance and rock chip sampling of one EM anomaly has highlighted some encouraging factors which has significantly increased the projects overall prospectivity:

1. Several discrete untested Airborne EM anomalies are present within the expanded project area which have not been evaluated by either ground checking, soil sampling, ground EM or drilling.
2. A site visit to the area of one Airborne EM anomaly identified the presence of copper oxide mineralisation (malachite) which returned rock chip samples ranging from 0.22% to a **peak of 23.9% Cu** and 5.2g/t to a **peak of 661g/t Ag** (Table 2). The high values in Copper and Silver which are coincident with the airborne EM anomaly represent a high priority target.
3. Four close spaced rock chip samples taken by CRA Exploration Pty Ltd in 1993 returned copper assays ranging from 0.04% up to a peak of 1.7% Cu. These rock chips are from mapped sedimentary units of the Yeneena Supergroup and no follow-up to evaluate these results has been completed.
4. A thirty-two sample soil sampling program over mapped units of the Yeneena Supergroup completed by CRA in 1993 returned values ranging from 11ppm to 607ppm copper, 0.21ppm to 12.5ppm silver, 9ppm - 1800ppm cobalt and 539ppm to 9830ppm barium which are considered **highly anomalous** soil values which have had no follow-up exploration and
5. The McKay Fault Zone, a regionally important fault structure associated with copper mineralisation to the north of the project area runs through the enlarged Beadell Project area.

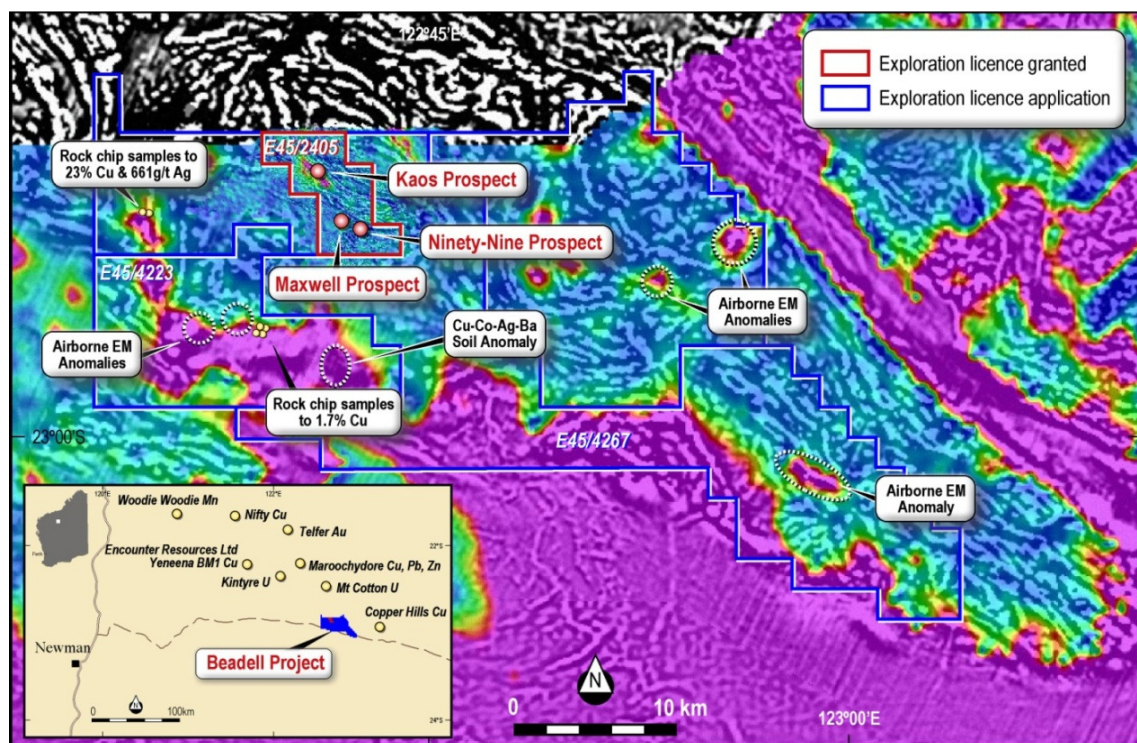


Figure 12: Beadell Project with Airborne EM as background with main prospect areas and newly identified soil, rock chip and EM targets.

Canegrass Project Western Australia

EL 29/783 – Granted - RTR owns 90%

No exploration was completed.

Boolaloo, Western Australia

These were withdrawn/surrendered during the quarter.



Paulsens South Western Australia

EL 08/1457- Granted - RTR earning 70%, VMS 30%
EL 47/1765 - Granted - RTR earning 70%, VMS 30%
EL 47/2503 - Granted – RTR 100%
EL 08/2256 - Granted – RTR 100%
EL 08/2257 - Granted – RTR 100%

No exploration was completed.

Leyland Project, Western Australia (RTR 100%)

These were withdrawn/surrendered during the quarter.

Burkina Faso Permits, West Africa

Derosa Project Permits - RTR owns 85% - CAY 15%

Bompela Permit
Sapala Permit
Rassouli Permit
Gourboula Permit
Boussou Permit
Souri Permit

No Exploration Work Completed

Renegotiation of Joint Venture

Rumble has renegotiated with its JV partner Canyon Resources Ltd (ASX: CAY (Canyon) to earn 85% of the project.

Terms of the Agreement

- Rumble to acquire 85% of the Derosa Project for 2,000,000 Rumble shares
- On the announcement of 500,000 ounce inferred resource, Rumble shall within 28 days, affect payment of \$250,000 worth of Listed Shares to Canyon.
- Free Carry. Canyon will retain a 15% free carry interest in the Derosa Project up to the decision to do a pre-feasibility report. Canyon then has the option to commit to their share of funds ongoing at that point or to reduce their holding via an industry standard dilution clause.

New Permits - RTR owns 100%

Nanemi Permit
Villibongo Permit
Pogoro Permit
Yalore Permit

Rumble completed a deal with Orbis Gold Ltd for 100% of 4 permits.

Terms of the Agreement

- Rumble acquired 100% of the Nanemi, Villibongo, Pogoro and Yalore permits for 2,700,000 Rumble shares.

Shane Sikora
CEO

- ENDS -

For further information visit rumbleresources.com.au or contact enquiries@rumbleresources.com.au.



About Rumble Resources Ltd

Rumble Resources Ltd is an Australian based exploration company, officially admitted to the ASX on the 1st July 2011. Rumble was established with the aim of adding significant value to its current gold and base metal assets and will continue to look at mineral acquisition opportunities both in Australia and abroad.

Competent Persons Statement

The information in this report that relates to Exploration Results is based on information compiled by Mr Terry Topping, who is a Member of the Australasian Institute of Mining & Metallurgy and the Australian Institute of Geoscientists. Mr Topping is a fulltime employee of Rumble Resources Limited and has sufficient experience relevant to the style of mineralisation and type of deposit under consideration and to the activity which he is undertaking to qualify as a Competent Person as defined in the 2012 Edition of the "Australasian Code for Reporting of Exploration Results, Mineral Resources and Ore Reserves". Mr Topping consents to the inclusion in the report of the matters based on his information in the form and context in which it appears.



Appendix

In accordance with Listing Rule 5.3.3. Rumble provides the following information in relation to its mining tenements.

1. The mining tenements held at the end of each quarter and their location.

Project	Tenement Number	Status	Location	Beneficial Percentage Interest
Paulsens South	E08/1457	Granted	Western Australia	0% <small>Note 1</small>
Paulsens South	E47/1765	Granted	Western Australia	0% <small>Note 1</small>
Paulsens South	E08/2256	Granted	Western Australia	100%
Paulsens South	E08/2257	Granted	Western Australia	100%
Paulsens South	E47/2503	Granted	Western Australia	100%
Beadell	E45/2405	Granted	Western Australia	80%
Beadell	E45/4267	Granted	Western Australia	80%
Beadell	E45/4186	Application	Western Australia	90%
Beadell	E45/4223	Application	Western Australia	80%
Beadell	E45/4233	Application	Western Australia	80%
Canegrass	E29/783	Granted	Western Australia	90%
Big Red	E28/2268	Granted	Western Australia	100%
Big Red	E69/3190	Granted	Western Australia	100%
Zanthus	E69/2506	Granted	Western Australia	20% <small>Note 3</small>
Zanthus	E28/2464	Application	Western Australia	100%
Zanthus	E 28/2466	Application	Western Australia	100%
Thunderstorm	E28/2322	Granted	Western Australia	100%
Thunderstorm	E28/2472	Application	Western Australia	100%
Thunderstorm	E 28/2382	Application	Western Australia	100%
Thunderstorm	E28/2471	Application	Western Australia	100%
Derosa	Bompela	Granted	Burkina Faso	85% <small>Note 2</small>
Derosa	Rassouli	Granted	Burkina Faso	85% <small>Note 2</small>
Derosa	Sapala	Granted	Burkina Faso	85% <small>Note 2</small>
Derosa	Boussou	Granted	Burkina Faso	85% <small>Note 2</small>
Derosa	Souri	Granted	Burkina Faso	85% <small>Note 2</small>
Derosa	Gourbala	Granted	Burkina Faso	85% <small>Note 2</small>
Burkina Faso	Nanemi	Granted	Burkina Faso	100%
Burkina Faso	Villibongo	Granted	Burkina Faso	100%
Burkina Faso	Pogoro	Granted	Burkina Faso	100%
Burkina Faso	Yalore	Granted	Burkina Faso	100%



2. Mining tenements acquired during the quarter and their location:

Project	Tenement Number	Status	Location	Beneficial Percentage Interest
Thunderstorm	E28/2472	Application	Western Australia	100%
Thunderstorm	E 28/2382	Application	Western Australia	100%
Thunderstorm	E28/2471	Application	Western Australia	100%
Zanthus	E 28/2466	Application	Western Australia	100%
Burkina Faso	Nanemi	Granted	Burkina Faso	100%
Burkina Faso	Villibongo	Granted	Burkina Faso	100%
Burkina Faso	Pogoro	Granted	Burkina Faso	100%
Burkina Faso	Yalore	Granted	Burkina Faso	100%

3. Mining tenements disposed of during the quarter and their location:

Project	Tenement Number	Status	Location	Comment
Leyland	E80/4767	Granted	Western Australia	Surrendered
Leyland	E80/4768	Granted	Western Australia	Surrendered
Leyland	E80/4780	Application	Western Australia	Withdrawn
Thunderstorm	E28/2383	Application	Western Australia	Lost ballot
Boolaloo	E08/2152	Granted	Western Australia	Surrendered
Boolaloo	E08/2489	Application	Western Australia	Withdrawn
Boolaloo	E08/2453	Application	Western Australia	Withdrawn

Note:

- Paulsens South Project, Western Australia**
E08/1457 and E47/1765 is subject to a Joint Venture agreement with Venture Minerals Ltd whereby Rumble can earn up to a 70% interest in these licences.
- Derosa Project, Burkina Faso**
Bompela, Rassouli, Sapala, Boussou, Souri and Gourbala are subject to a Joint Venture agreement with Canyon Resources limited whereby Rumble owns 85% interest and Canyon a 15% interest.
- Zanthus Project, Western Australia**
E69/2506 is subject to a Joint Venture agreement with Blackham Resources Ltd whereby Rumble can earn up to a 75% interest in the licence.



Section 1 Sampling Techniques and Data

Criteria	JORC Code explanation	Commentary
Sampling techniques	<ul style="list-style-type: none"> Nature and quality of sampling (eg cut channels, random chips, or specific specialised industry standard measurement tools appropriate to the minerals under investigation, such as down hole gamma sondes, or handheld XRF instruments, etc). These examples should not be taken as limiting the broad meaning of sampling. Include reference to measures taken to ensure sample representivity and the appropriate calibration of any measurement tools or systems used. Aspects of the determination of mineralisation that are Material to the Public Report. In cases where 'industry standard' work has been done this would be relatively simple (eg 'reverse circulation drilling was used to obtain 1 m samples from which 3 kg was pulverised to produce a 30 g charge for fire assay'). In other cases more explanation may be required, such as where there is coarse gold that has inherent sampling problems. Unusual commodities or mineralisation types (eg submarine nodules) may warrant disclosure of detailed information. 	<ul style="list-style-type: none"> No information required for these exploration results as no drilling results are presented.
Drilling techniques	<ul style="list-style-type: none"> Drill type (eg core, reverse circulation, open-hole hammer, rotary air blast, auger, Bangka, sonic, etc) and details (eg core diameter, triple or standard tube, depth of diamond tails, face-sampling bit or other type, whether core is oriented and if so, by what method, etc).. 	<ul style="list-style-type: none"> No information required for these exploration results as no drilling results are presented.
Drill sample recovery	<ul style="list-style-type: none"> Method of recording and assessing core and chip sample recoveries and results assessed. Measures taken to maximise sample recovery and ensure representative nature of the samples. Whether a relationship exists between sample recovery and grade and whether sample bias may have occurred due to preferential loss/gain of fine/coarse material. 	<ul style="list-style-type: none"> No information required for these exploration results as no drilling results are presented.
Logging	<ul style="list-style-type: none"> Whether core and chip samples have been geologically and geotechnically logged to a level of detail to support appropriate Mineral Resource estimation, mining studies and metallurgical studies. Whether logging is qualitative or quantitative in nature. Core (or costean, channel, etc) photography. The total length and percentage of the relevant intersections logged. 	<ul style="list-style-type: none"> No information required for these exploration results as no drilling results are presented.
Sub-sampling techniques and sample preparation	<ul style="list-style-type: none"> If core, whether cut or sawn and whether quarter, half or all core taken. If non-core, whether riffled, tube sampled, rotary split, etc and whether sampled wet or dry. For all sample types, the nature, quality and appropriateness of the sample preparation technique. Quality control procedures adopted for all sub-sampling stages to maximise representivity of samples. Measures taken to ensure that the sampling is representative of the in situ material collected, including for instance results for field duplicate/second-half sampling. Whether sample sizes are appropriate to the grain size of the material being sampled. 	<ul style="list-style-type: none"> No information required for these exploration results as no drilling results are presented.



Criteria	JORC Code explanation	Commentary
Quality of assay data and laboratory tests	<ul style="list-style-type: none"> The nature, quality and appropriateness of the assaying and laboratory procedures used and whether the technique is considered partial or total. For geophysical tools, spectrometers, handheld XRF instruments, etc, the parameters used in determining the analysis including instrument make and model, reading times, calibrations factors applied and their derivation, etc. Nature of quality control procedures adopted (eg standards, blanks, duplicates, external laboratory checks) and whether acceptable levels of accuracy (ie lack of bias) and precision have been established. 	<ul style="list-style-type: none"> A Cesium vapour magnetometer was used with a 20Hz sampling rate. The base station was a Geometrics G856AX proton precession magnetometer. The radiometric data was obtained using a RSI Spectrometer at a 2 Hz sampling rate.
Verification of sampling and assaying	<ul style="list-style-type: none"> The verification of significant intersections by either independent or alternative company personnel. The use of twinned holes. Documentation of primary data, data entry procedures, data verification, data storage (physical and electronic) protocols. Discuss any adjustment to assay data. 	<ul style="list-style-type: none"> All data is checked on a daily basis by field staff and consultants Any data points that are questionable are re-surveyed
Location of data points	<ul style="list-style-type: none"> Accuracy and quality of surveys used to locate drill holes (collar and down-hole surveys), trenches, mine workings and other locations used in Mineral Resource estimation. Specification of the grid system used. Quality and adequacy of topographic control. 	<ul style="list-style-type: none"> Data points were located by a KRA405B altimeter. Elevation values were in AHD. Expected accuracy is 3' or +/- 3% The grid system is GDA94(MGA), zone 51
Data spacing and distribution	<ul style="list-style-type: none"> Data spacing for reporting of Exploration Results. Whether the data spacing and distribution is sufficient to establish the degree of geological and grade continuity appropriate for the Mineral Resource and Ore Reserve estimation procedure(s) and classifications applied. Whether sample compositing has been applied. 	<ul style="list-style-type: none"> Magnetics data was collected in 0.05 second intervals and Radiometric data at 0.5 second intervals Not applicable as this data is not used in Mineral Resource Estimation. No sample compositing has been applied.
Orientation of data in relation to geological structure	<ul style="list-style-type: none"> Whether the orientation of sampling achieves unbiased sampling of possible structures and the extent to which this is known, considering the deposit type. If the relationship between the drilling orientation and the orientation of key mineralised structures is considered to have introduced a sampling bias, this should be assessed and reported if material. 	<ul style="list-style-type: none"> Traverses were undertaken to be perpendicular to the interpreted strike direction and some parallel to the interpreted strike direction.
Sample security	<ul style="list-style-type: none"> The measures taken to ensure sample security. 	<ul style="list-style-type: none"> All data has been collected by Thompson Aviation Pty Ltd with data provided to the Companies consultants
Audits or reviews	<ul style="list-style-type: none"> The results of any audits or reviews of sampling techniques and data. 	<ul style="list-style-type: none"> No audits or reviews have been carried out at this stage.



Section 2 Reporting of Exploration Results

Criteria	JORC Code explanation	Commentary
Mineral tenement and land tenure status	<ul style="list-style-type: none"> Type, reference name/number, location and ownership including agreements or material issues with third parties such as joint ventures, partnerships, overriding royalties, native title interests, historical sites, wilderness or national park and environmental settings. The security of the tenure held at the time of reporting along with any known impediments to obtaining a licence to operate in the area. 	<ul style="list-style-type: none"> The Aeromagnetic survey is located wholly within Exploration Licence E69/2506 with Rumble earning up to 75% from Blackham Resources Ltd. Located on Vacant Crown Land.
Exploration done by other parties	<ul style="list-style-type: none"> Acknowledgment and appraisal of exploration by other parties. 	<ul style="list-style-type: none"> The only previous geophysics was completed for the GSWA.
Geology	<ul style="list-style-type: none"> Deposit type, geological setting and style of mineralisation. 	<ul style="list-style-type: none"> The Company is exploring for base metals and gold mineralisation
Drill hole Information	<ul style="list-style-type: none"> A summary of all information material to the understanding of the exploration results including a tabulation of the following information for all Material drill holes: <ul style="list-style-type: none"> easting and northing of the drill hole collar elevation or RL (Reduced Level – elevation above sea level in metres) of the drill hole collar dip and azimuth of the hole down hole length and interception depth hole length. If the exclusion of this information is justified on the basis that the information is not Material and this exclusion does not detract from the understanding of the report, the Competent Person should clearly explain why this is the case. 	<ul style="list-style-type: none"> No information required for these exploration results as no drilling results are presented.
Data aggregation methods	<ul style="list-style-type: none"> In reporting Exploration Results, weighting averaging techniques, maximum and/or minimum grade truncations (eg cutting of high grades) and cut-off grades are usually Material and should be stated. Where aggregate intercepts incorporate short lengths of high grade results and longer lengths of low grade results, the procedure used for such aggregation should be stated and some typical examples of such aggregations should be shown in detail. The assumptions used for any reporting of metal equivalent values should be clearly stated. 	<ul style="list-style-type: none"> No information required for these exploration results as no drilling results are presented.
Relationship between mineralisation widths and intercept lengths	<ul style="list-style-type: none"> These relationships are particularly important in the reporting of Exploration Results. If the geometry of the mineralisation with respect to the drill hole angle is known, its nature should be reported. If it is not known and only the down hole lengths are reported, there should be a clear statement to this effect (eg 'down hole length, true width not known'). 	<ul style="list-style-type: none"> No information required for these exploration results as no drilling results are presented.
Diagrams	<ul style="list-style-type: none"> Appropriate maps and sections (with scales) and tabulations of intercepts should be included for any significant discovery being reported These should include, but not be limited to a plan view of drill hole collar locations and appropriate sectional views. 	<ul style="list-style-type: none"> Figure 1 is the plan view of the Magnetism Survey completed.



Criteria	JORC Code explanation	Commentary
<i>Balanced reporting</i>	<ul style="list-style-type: none"> • <i>Where comprehensive reporting of all Exploration Results is not practicable, representative reporting of both low and high grades and/or widths should be practiced to avoid misleading reporting of Exploration Results.</i> 	<ul style="list-style-type: none"> • No information required for these exploration results as no drilling results are presented.
<i>Other substantive exploration data</i>	<ul style="list-style-type: none"> • <i>Other exploration data, if meaningful and material, should be reported including (but not limited to): geological observations; geophysical survey results; geochemical survey results; bulk samples – size and method of treatment; metallurgical test results; bulk density, groundwater, geotechnical and rock characteristics; potential deleterious or contaminating substances.</i> 	<ul style="list-style-type: none"> • Previous ASX releases by Rumble have detailed aspects of previous work undertaken at the project
<i>Further work</i>	<ul style="list-style-type: none"> • <i>The nature and scale of planned further work (eg tests for lateral extensions or depth extensions or large-scale step-out drilling).</i> • <i>Diagrams clearly highlighting the areas of possible extensions, including the main geological interpretations and future drilling areas, provided this information is not commercially sensitive.</i> 	<ul style="list-style-type: none"> • At this stage, the Magnetics data are indicative in nature and require further exploration to establish the true size and nature of the mineralisation, if any. • Refer to diagrams in body of report.

Appendix 5B

Mining exploration entity and oil and gas exploration entity quarterly report

Introduced 01/07/96 Origin Appendix 8 Amended 01/07/97, 01/07/98, 30/09/01, 01/06/10, 17/12/10, 01/05/2013

Name of entity

Rumble Resources Limited

ABN

74 148 214 260

Quarter ended ("current quarter")

30 June 2014

Consolidated statement of cash flows

Cash flows related to operating activities	Current quarter \$A'000	Year to date (12 months) \$A'000
1.1 Receipts from product sales and related debtors	-	-
1.2 Payments for (a) exploration & evaluation (b) development (c) production (d) administration	(368) - - (221)	(1,069) - - (772)
1.3 Dividends received	-	
1.4 Interest and other items of a similar nature received	4	7
1.5 Interest and other costs of finance paid	-	-
1.6 Income taxes paid	-	-
1.7 Other – grant income	-	462
Net Operating Cash Flows	(585)	(1,372)
Cash flows related to investing activities		
1.8 Payment for purchases of: (a) prospects (b) equity investments (c) other fixed assets	- - -	(56) - -
1.9 Proceeds from sale of: (a) prospects (b) equity investments (c) other fixed assets	- 70 -	- 108 -
1.10 Loans to other entities	-	-
1.11 Loans repaid by other entities	-	-
1.12 Other (provide details if material)	-	-
Net investing cash flows	70	52
1.13 Total operating and investing cash flows (carried forward)	(515)	(1,320)

+ See chapter 19 for defined terms.

Appendix 5B
Mining exploration entity and oil and gas exploration entity quarterly report

1.13	Total operating and investing cash flows (brought forward)	(515)	(1,320)
	Cash flows related to financing activities		
1.14	Proceeds from issues of shares, options, etc.	1,678	2,562
1.15	Proceeds from sale of forfeited shares	-	-
1.16	Proceeds from borrowings	-	-
1.17	Repayment of borrowings	-	-
1.18	Dividends paid	-	-
1.19	Other – cost of share issues	(104)	(172)
	Net financing cash flows	1,574	2,390
	Net increase (decrease) in cash held	1,059	1,070
1.20	Cash at beginning of quarter/year to date	270	259
1.21	Exchange rate adjustments to item 1.20	-	-
1.22	Cash at end of quarter	1,329	1,329

Payments to directors of the entity, associates of the directors, related entities of the entity and associates of the related entities

		Current quarter \$A'000
1.23	Aggregate amount of payments to the parties included in item 1.2	55
1.24	Aggregate amount of loans to the parties included in item 1.10	-

1.25 Explanation necessary for an understanding of the transactions

1.23 includes director's fees and salaries for executive and non-executive directors

Non-cash financing and investing activities

2.1 Details of financing and investing transactions which have had a material effect on consolidated assets and liabilities but did not involve cash flows

--

2.2 Details of outlays made by other entities to establish or increase their share in projects in which the reporting entity has an interest

--

+ See chapter 19 for defined terms.

Financing facilities available

Add notes as necessary for an understanding of the position.

	Amount available \$A'000	Amount used \$A'000
3.1 Loan facilities	-	-
3.2 Credit standby arrangements	-	-

Estimated cash outflows for next quarter

	\$A'000
4.1 Exploration and evaluation	200
4.2 Development	-
4.3 Production	-
4.4 Administration	120
Total	320

Reconciliation of cash

Reconciliation of cash at the end of the quarter (as shown in the consolidated statement of cash flows) to the related items in the accounts is as follows.

	Current quarter \$A'000	Previous quarter \$A'000
5.1 Cash on hand and at bank	1,276	217
5.2 Deposits at call	53	53
5.3 Bank overdraft	-	-
5.4 Other (provide details)	-	-
Total: cash at end of quarter (item 1.22)	1,329	270

Changes in interests in mining tenements and petroleum tenements

	Tenement reference and location	Nature of interest (note (2))	Interest at beginning of quarter	Interest at end of quarter
6.1 Interests in mining tenements and petroleum tenements relinquished, reduced or lapsed	E80/4767	Leyland Project	100%	-
	E80/4768	Leyland Project	100%	-
	E08/2152	Boolaloo Project	100%	-
6.2 Interests in mining tenements and petroleum tenements acquired or increased	Nanemi	Burkina Faso	-	100%
	Villibongo	Burkina Faso	-	100%
	Pogoro	Burkina Faso	-	100%
	Yalore	Burkina Faso	-	100%

+ See chapter 19 for defined terms.

Issued and quoted securities at end of current quarter

Description includes rate of interest and any redemption or conversion rights together with prices and dates.

	Total number	Number quoted	Issue price per security (see note 3) (cents)	Amount paid up per security (see note 3) (cents)
7.1 Preference securities (description)				
7.2 Changes during quarter (a) Increases through issues (b) Decreases through returns of capital, buy-backs, redemptions				
7.3 *Ordinary securities	121,249,477	121,249,477		
7.4 Changes during quarter (a) Increases through issues (b) Decreases through returns of capital, buy-backs	41,745,997 -	41,745,997 -		
7.5 *Convertible debt securities (description)				
7.6 Changes during quarter (a) Increases through issues (b) Decreases through securities matured, converted				
7.7 Options (description and conversion factor)	20,578,102 6,600,000 12,258,333 6,926,996 3,600,000 4,500,000 1,707,316	20,578,102 - 12,258,333 6,926,996 - - -	Exercise price 8 cents 25 cents 25 cents 35 cents 35 cents 45 cents 4.1 cents	Expiry date 30 June 2015 31 July 2014 31 July 2014 31 October 2015 31 October 2015 31 October 2015 17 December 2016
7.8 Issued during quarter				
7.9 Exercised during quarter				

+ See chapter 19 for defined terms.

Mining exploration entity and oil and gas exploration entity quarterly report

7.10	Expired during quarter				
7.11	Debentures (totals only)				
7.12	Unsecured notes (totals only)				

Compliance statement

- 1 This statement has been prepared under accounting policies which comply with accounting standards as defined in the Corporations Act or other standards acceptable to ASX (see note 5).
- 2 This statement does /does not* (*delete one*) give a true and fair view of the matters disclosed.

Sign here: Date: 31 July 2014
(Company secretary)

Print name: David Palumbo

Notes

- 1 The quarterly report provides a basis for informing the market how the entity's activities have been financed for the past quarter and the effect on its cash position. An entity wanting to disclose additional information is encouraged to do so, in a note or notes attached to this report.
- 2 The "Nature of interest" (items 6.1 and 6.2) includes options in respect of interests in mining tenements and petroleum tenements acquired, exercised or lapsed during the reporting period. If the entity is involved in a joint venture agreement and there are conditions precedent which will change its percentage interest in a mining tenement or petroleum tenement, it should disclose the change of percentage interest and conditions precedent in the list required for items 6.1 and 6.2.
- 3 **Issued and quoted securities** The issue price and amount paid up is not required in items 7.1 and 7.3 for fully paid securities.
- 4 The definitions in, and provisions of, *AASB 6: Exploration for and Evaluation of Mineral Resources* and *AASB 107: Statement of Cash Flows* apply to this report.
- 5 **Accounting Standards** ASX will accept, for example, the use of International Financial Reporting Standards for foreign entities. If the standards used do not address a topic, the Australian standard on that topic (if any) must be complied with.

== == == == ==

+ See chapter 19 for defined terms.