



SUREFIRE RESOURCES NL

A gilt metal explorer

Important notices



Forward Looking Statements:

This announcement contains 'forward-looking information' that is based on the Company's expectations, estimates and projections as of the date on which the statements were made. This forward-looking information includes, among other things, statements with respect to the Company's business strategy, plans, development, objectives, performance, outlook, growth, cash flow, projections, targets and expectations, mineral reserves and resources, results of exploration and related expenses. Generally, this forward-looking information can be identified by the use of forward-looking terminology such as 'outlook', 'anticipate', 'project', 'target', 'potential', 'likely', 'believe', 'estimate', 'expect', 'intend', 'may', 'would', 'could', 'should', 'scheduled', 'will', 'plan', 'forecast', 'evolve' and similar expressions. Persons reading this announcement are cautioned that such statements are only predictions, and that the Company's actual future results or performance may be materially different. Forward-looking information is subject to known and unknown risks, uncertainties and other factors that may cause the Company's actual results, level of activity, performance or achievements to be materially different from those expressed or implied by such forward-looking information.

New Information or Data:

SRN confirms that it is not aware of any new information or data that materially affects the information included in previous market announcements and, in the case of estimates of Mineral Resources, which all material assumptions and technical parameters underpinning the estimates in the relevant market announcement continue to apply and have not materially changed. The Company confirms that the form and context in which the Competent Person's findings are presented have not materially changed from the original market announcement.

Competent Person Statement:

The information in this report that relates to Exploration Results is based on information compiled by Mr Marcus Flis who is a Fellow of the Australian Institute of Geoscientists. Mr Flis is an independent Principal Consultant at Rountree Pty Ltd. Mr Flis has experience that is relevant to the style of mineralisation, type of deposit under consideration and to the activity that they are undertaking to qualify as a Competent Person as defined in the 2012 edition of the 'Australasian Code for Reporting of Exploration Results, Mineral Resources and Ore Reserves' and consents to the inclusion in this report of the matters based on their information in the form and context in which they appear.

Surefire confirms that it is not aware of any new information or data that materially affects the information included in the original market announcements and, in the case of estimates of Mineral Resources, which all material assumptions and technical parameters underpinning the estimates in the relevant market announcement continue to apply and have not materially changed. The Company confirms that the form and context in which the Competent Person's findings are presented have not materially changed from the original market announcement.

Corporate: well funded, huge potential



Capital Structure

Fully paid ordinary shares	1,103,710,410
Listed options (\$0.006 ex 30 June 22)	361,430,019
Unlisted partly paid (\$0.027)	247,894,451
Unlisted partly paid (\$0.0059)	200,000,000
Share price	\$0.012
Market capitalisation (undiluted)	\$13.2m
Cash	\$2.9m
Debt	\$0

Directors & Management

Vladimir Nikolaenko	Executive Chairman/Managing Director
Michael Povey	Non-Executive Director
Roger Smith	Non-Executive Director
Rudolf Tieleman	Company Secretary

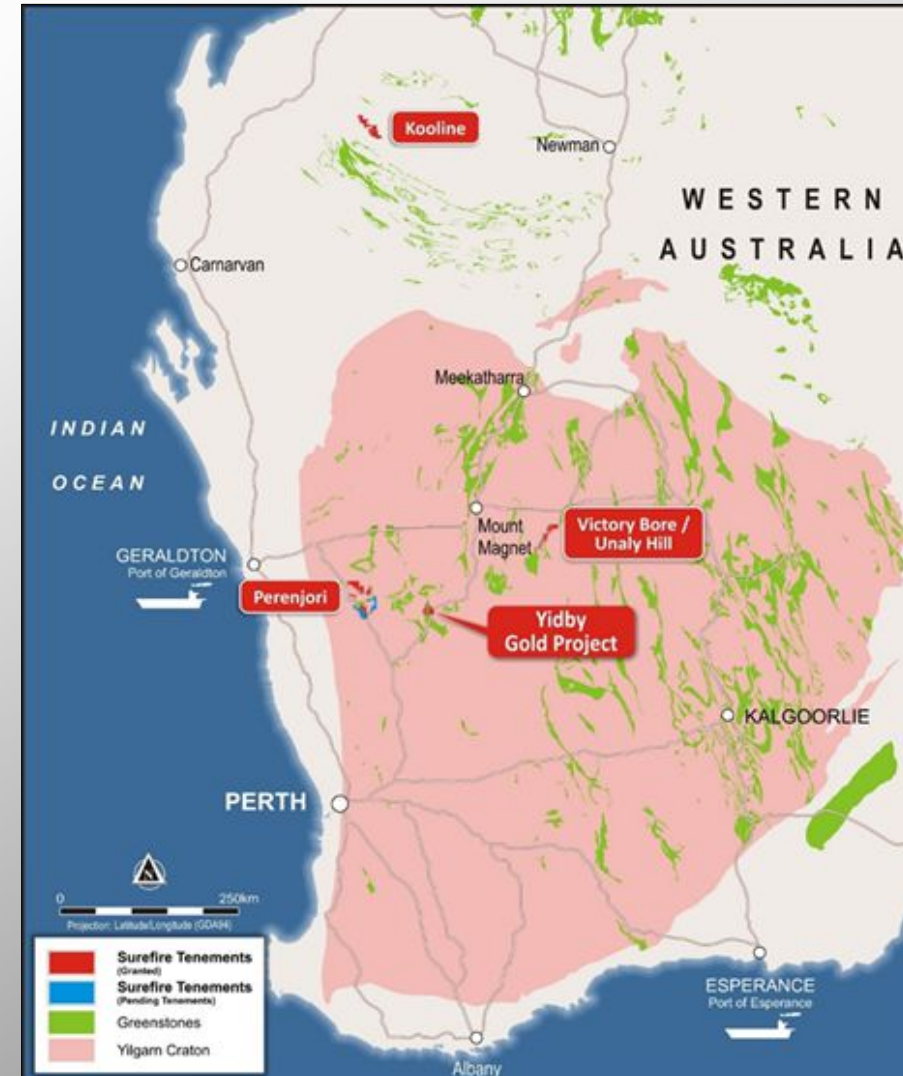
Ownership



A broad portfolio focused on discovery

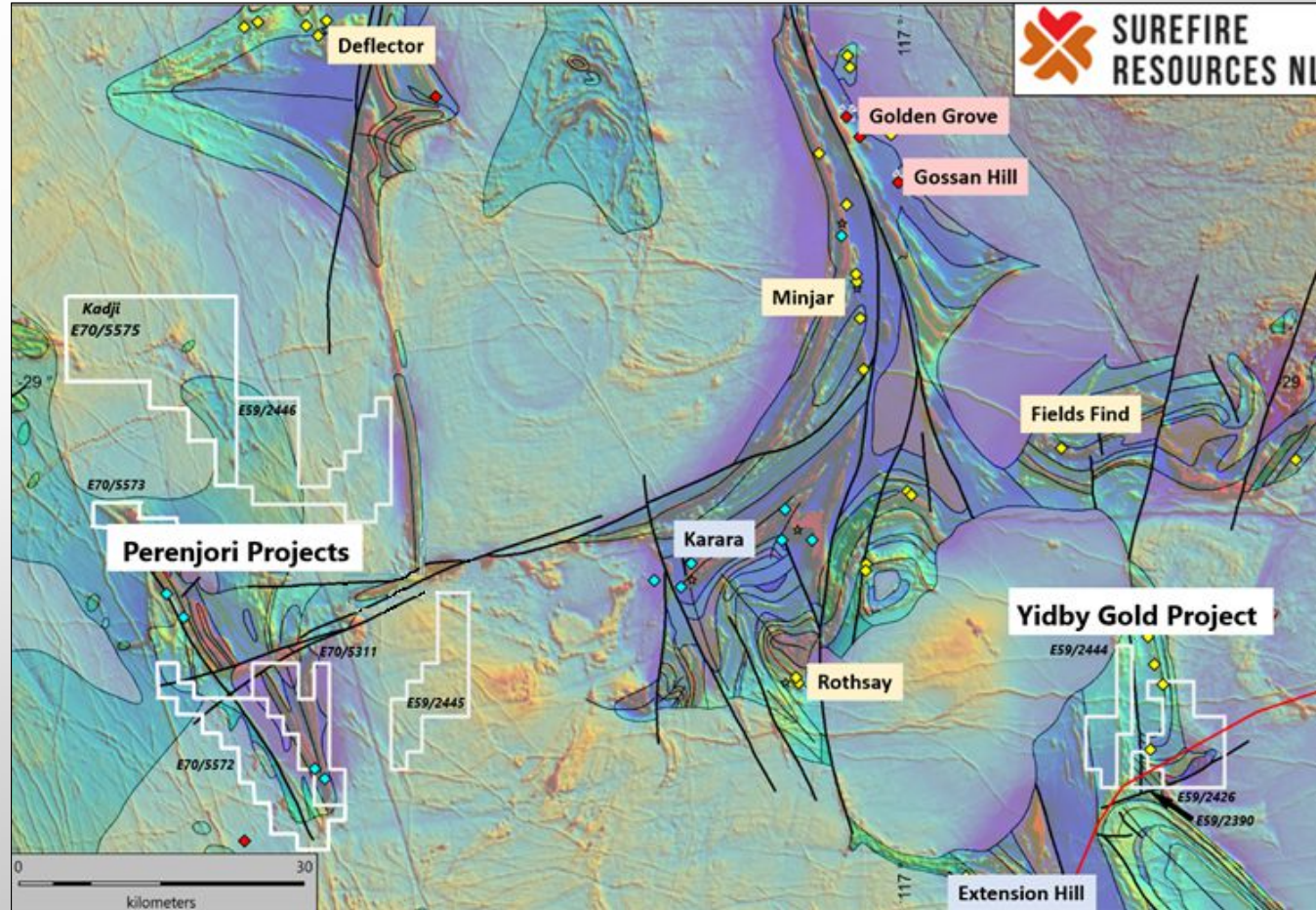


- ✦ Strategic land position in Yalgoo & Koolanooka Greenstone Belts in Mid West region of WA
- ✦ Gold, base metals, and iron
- ✦ Active exploration across holdings
- ✦ Programmes fully funded from cash reserves



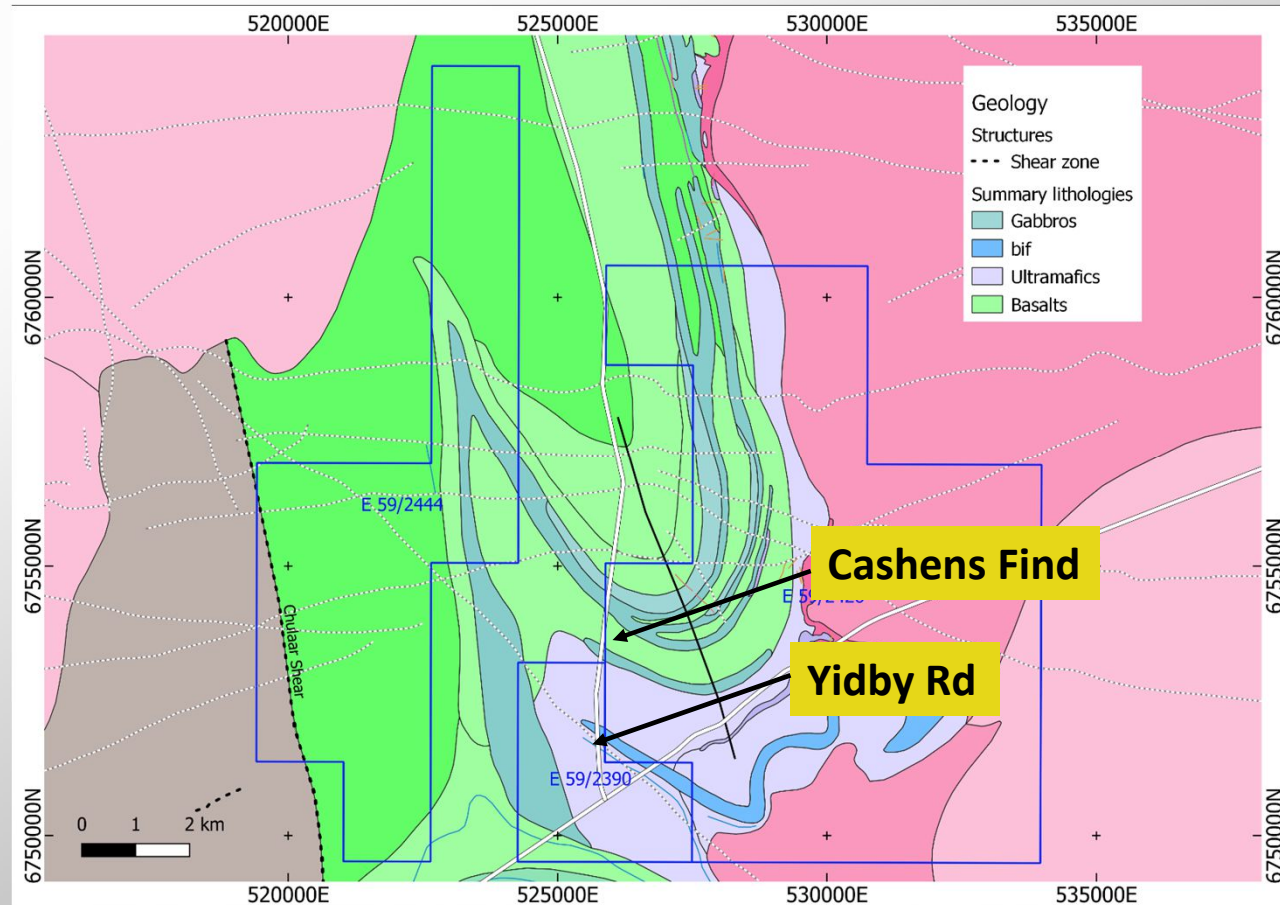
Gold and iron

- ❖ Strategic land position in Yalgoo & Koolanooka Greenstone Belts in Mid West region of WA
- ❖ 8 ELs and 1 ELA covering an area of 567 km²
- ❖ Poorly explored, no modern exploration
- ❖ All 100% ownership
- ❖ Gold, base metals, and iron
- ❖ Programmes fully funded from cash reserves



Yidby Gold: an ignored greenstone

- ✘ Sequence of folded mafics, felsic volcanics, porphyries, and bif
- ✘ Gold appears to be associated with a NW trending anticlinal axis
- ✘ Long prospective zone identified with only a fraction tested by drilling
- ✘ High resolution ground magnetic survey being undertaken to identify controlling faults



Yidby Gold: a blind deposit discovery

❖ Spectacular results from drilling to date

- 56m at 1.97 g/t Au from 44m in YBRC007
- **40m at 3.01 g/t Au from 24m in YBRC008**
- 36m at 1.51 g/t Au from 32m in YBRC006
- 26m at 2.02 g/t Au from 126m in YBRC035
- **9m at 4.17 g/t Au from 18m in CHRC001**
- **44m at 2.77 g/t Au from 149m in YBRC019**
- 83m at 0.64 g/t Au from 112m in YBRC017
- 19m at 1.28 g/t Au from 84m in YBRC013

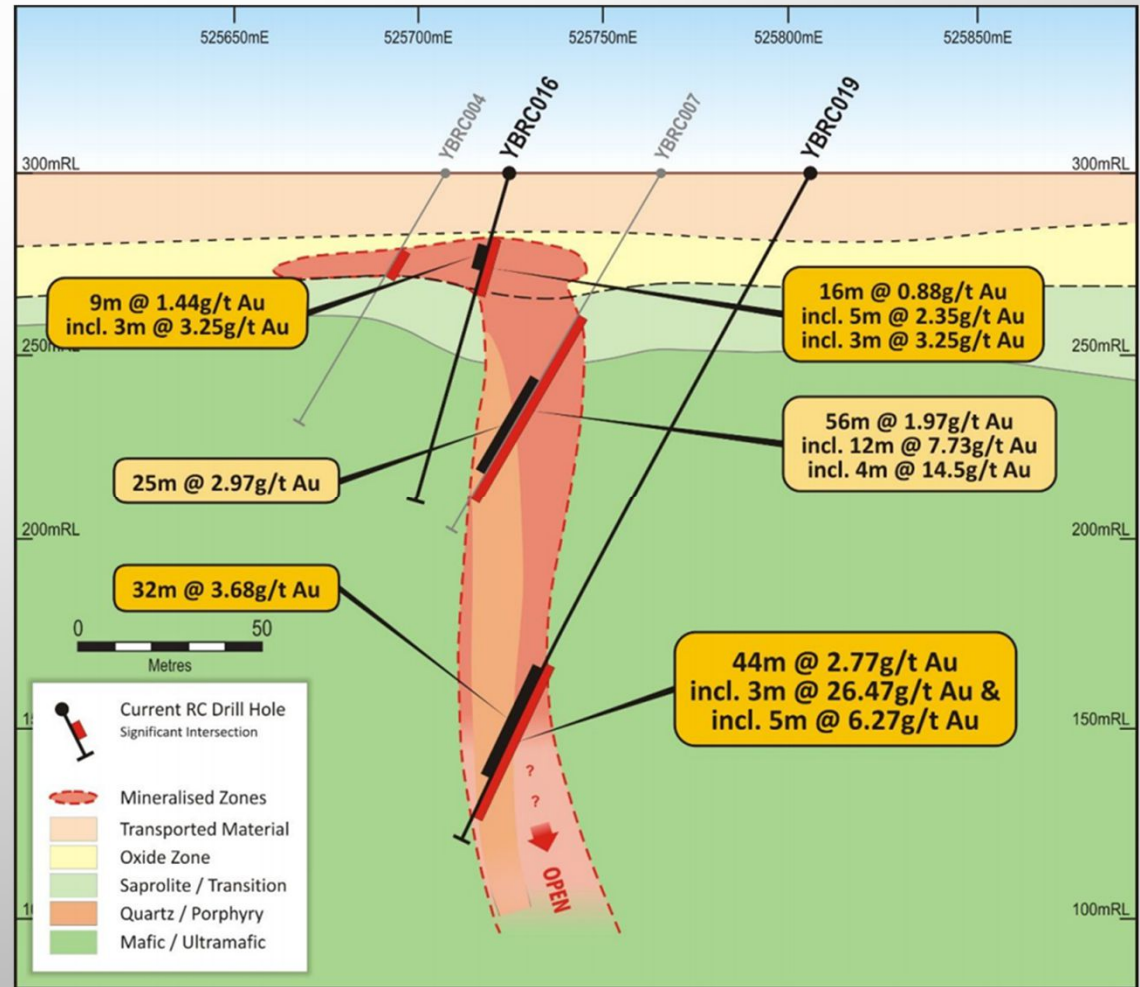
❖ Third campaign now completed, results awaited; geologic logs indicate thick quartz veins intersected



REFER ASX RELEASES DATED: 30/11/2020, 15/12/2020, 05/05/2021, 02/06/2021

Yidby Gold: thick intercepts = mineable! SUREFIRE RESOURCES NL

- ✘ Gold associated with quartz veining in porphyry intruded along NW structural corridor
- ✘ Discovery is characterised by its thick gold intercepts
- ✘ Mineralisation remains open along strike and at depth
- ✘ Interpreted sub-parallel structural corridor at Cashens Find to the NE yet to be assessed

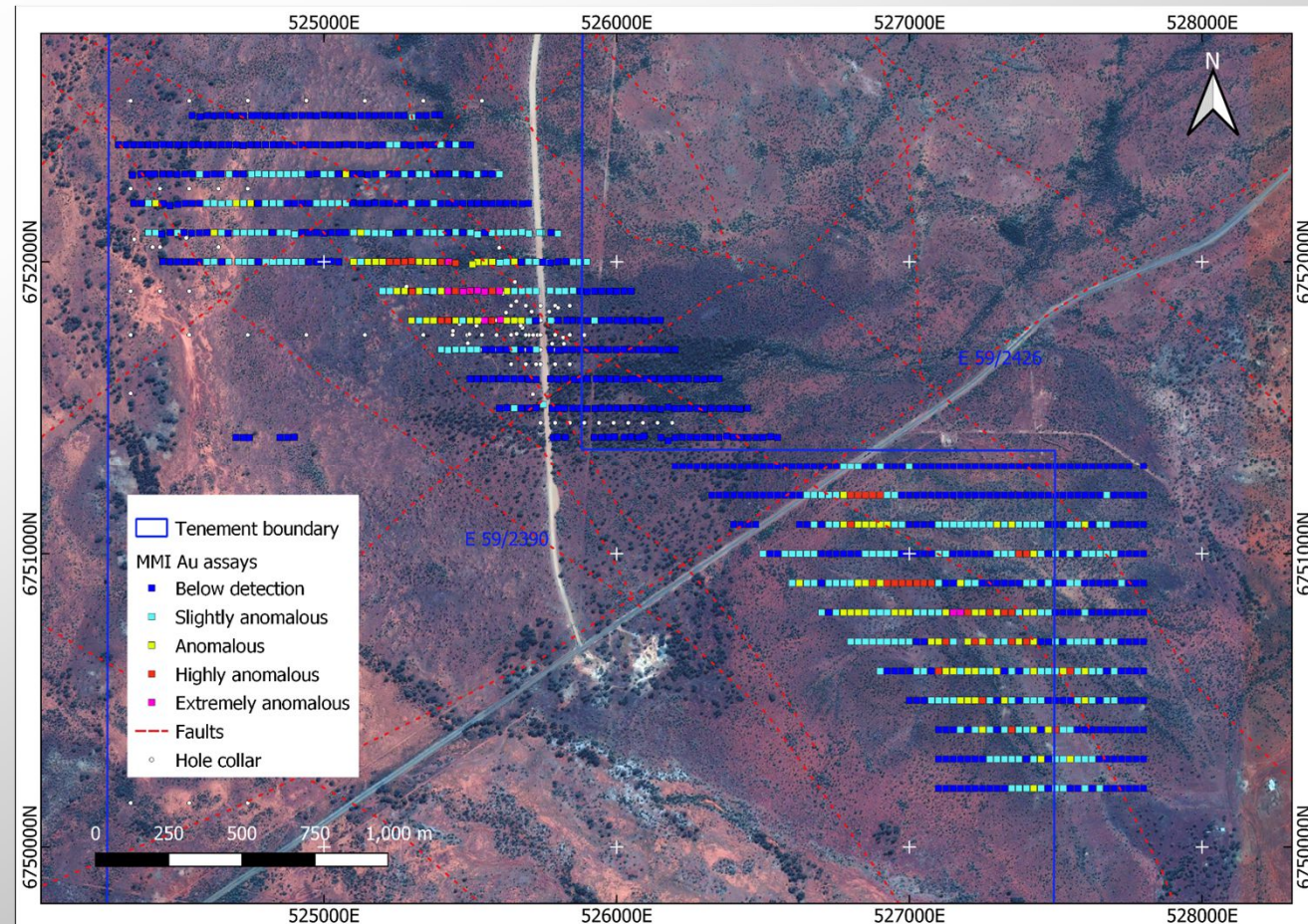


REFER ASX RELEASES DATED: 05/05/2021

ASX : SRN
SRNOC

Yidby Gold: elephants to be discovered

- ✘ Extension of Yidby Rd mineralisation to NW remains untested
- ✘ Recent geochemical survey indicates a second zone, the “Money Anomaly”, to the SE
- ✘ Anomalous target zone now extends over 3km strike length
- ✘ Zone is coincident with a major gravity defined corridor
- ✘ A second gravity corridor to the NE hosts the Cashens Find gold prospect



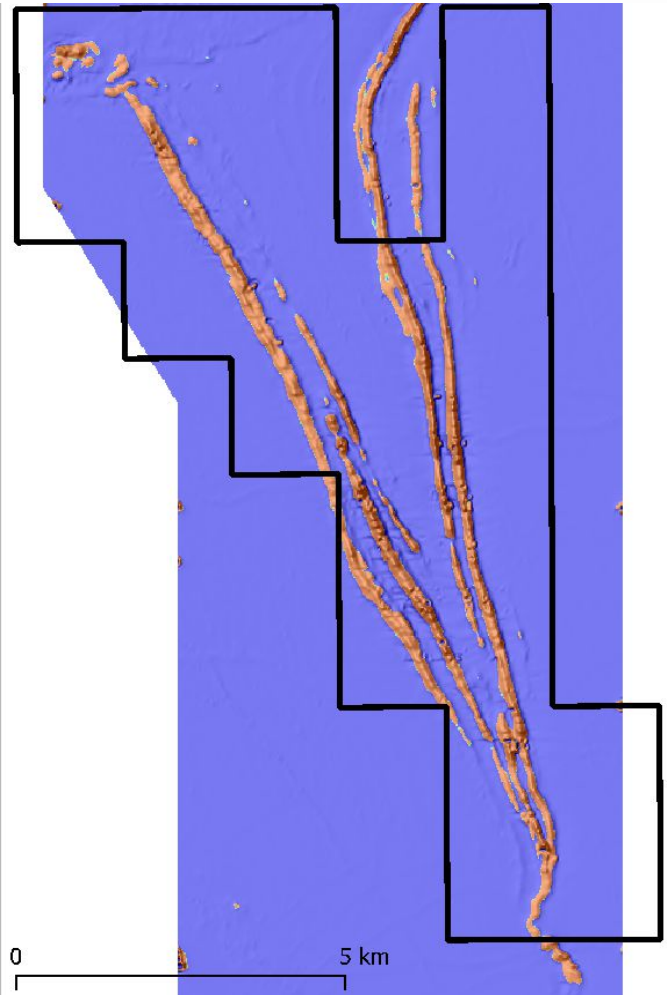
Perenjori Iron: the heart of the MidWest

- ❖ One of the closest magnetite resources to the coast in the Mid West
- ❖ Surrounded by critical infrastructure
- ❖ Rail distance to Geraldton bulk commodities port is 219km
- ❖ High voltage transmission line only 8km to the north
- ❖ In an established mining district of Western Australia



ASX : SRN
SRNOC

Perenjori Iron: Huge Blue Sky



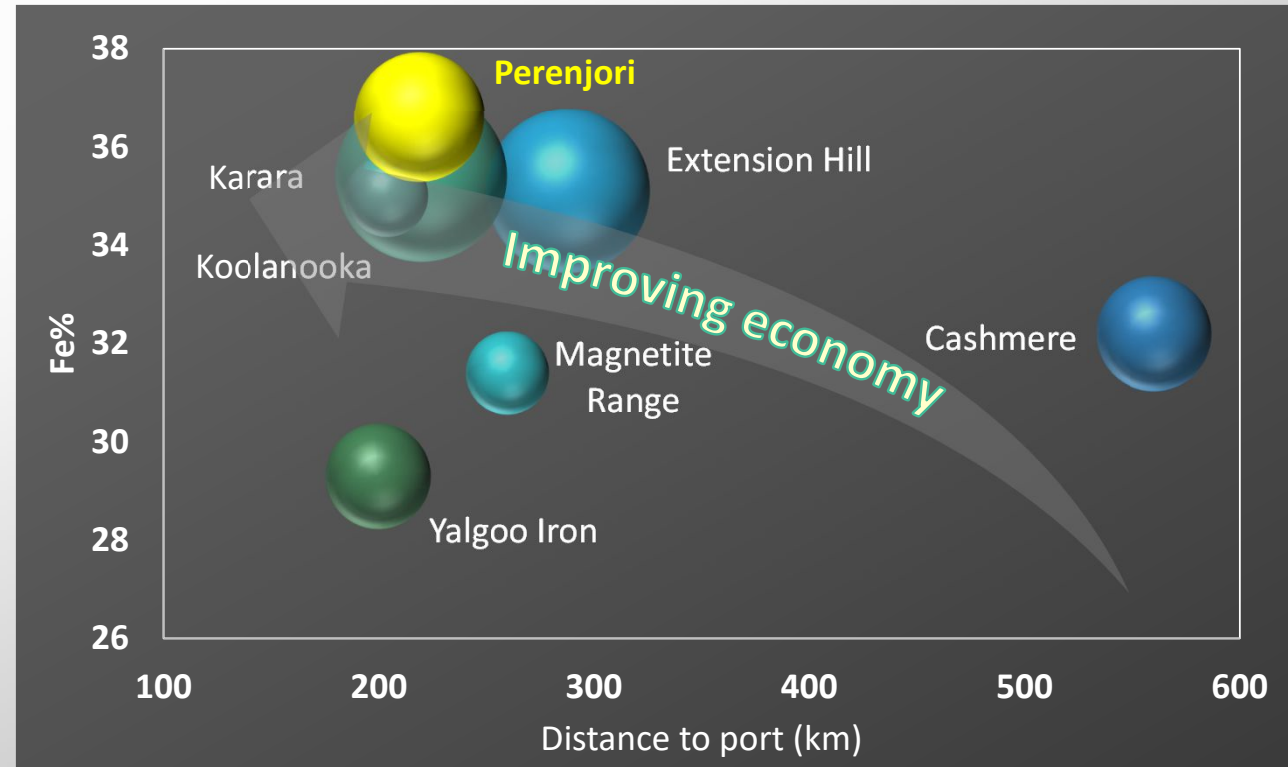
- ✘ 47 strike kilometres of banded iron formation
- ✘ 25% of this strike length drilled for an Inferred resource of:

191.7Mt @ 36.6% Fe¹

- ✘ 164 RC holes for 8,107m drilled historically
- ✘ Scoping Study indicates this project can produce a premium product and is economic in today's market
- ✘ Modelling of aeromagnetic data indicates huge upside potential

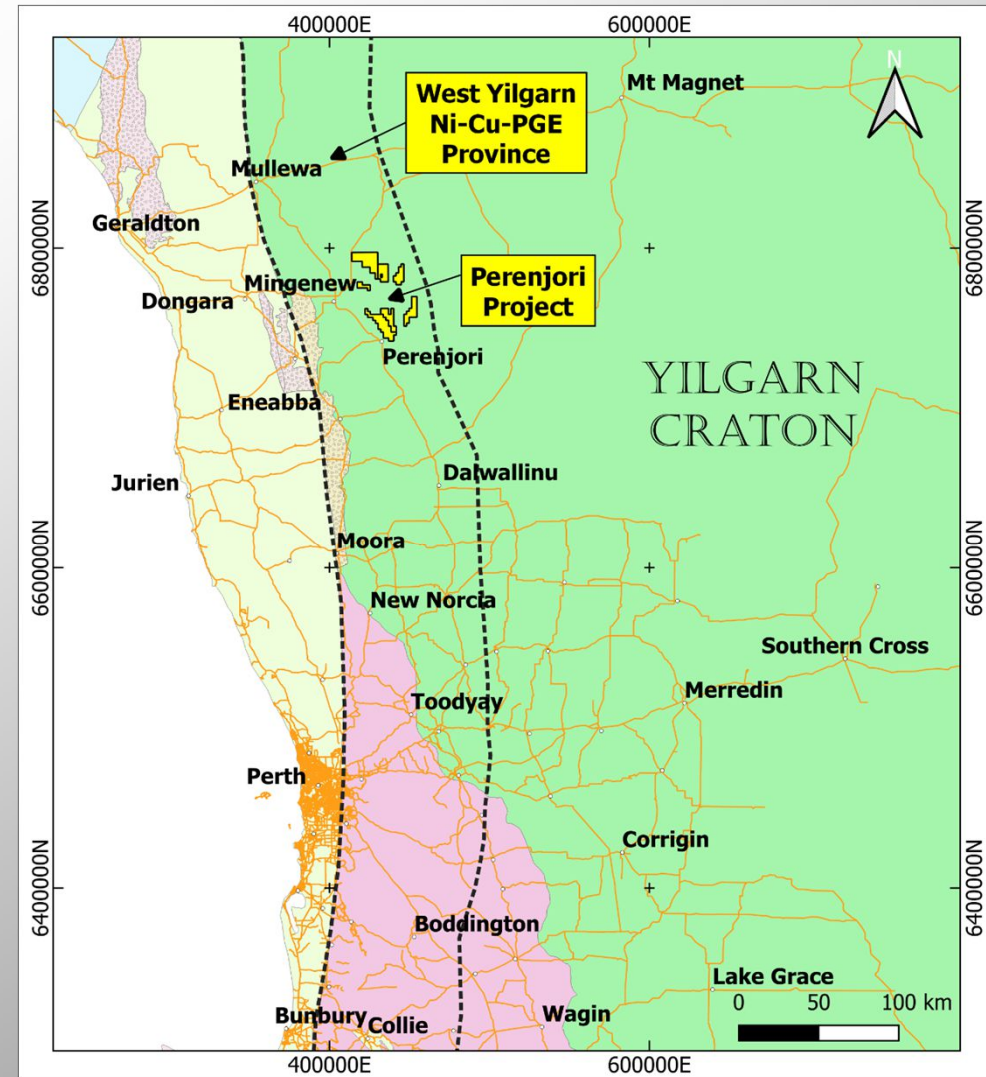
Perenjori Iron: critical points

- ✘ Transport distance is key to economic production of a bulk commodity
- ✘ Head grade relates directly to tonnes mined to produce a tonne of product
- ✘ Unlike some others, both these parameters are difficult to “engineer out”
- ✘ Perenjori has a natural advantage with grade and distance to existing port



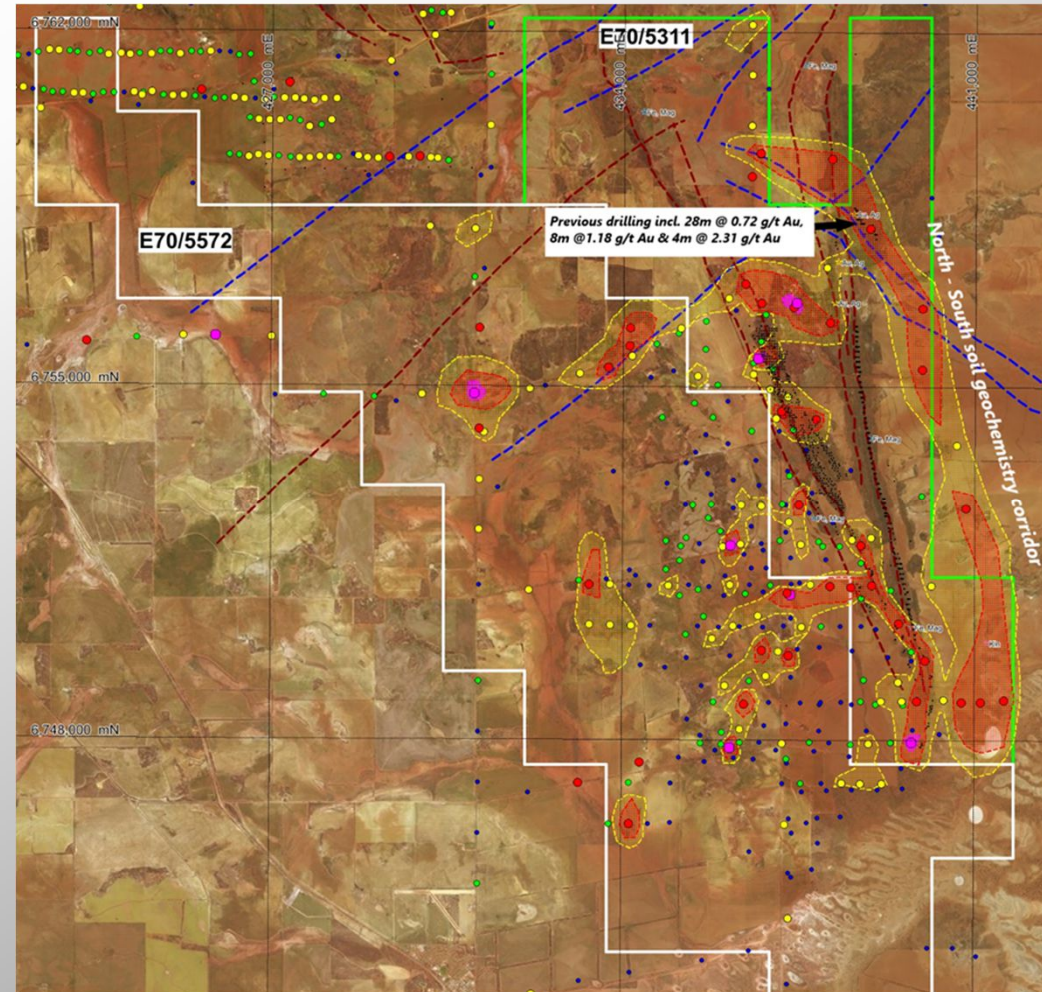
Perenjori: West Yilgarn Province

- ✘ Newly defined, highly prospective West Yilgarn Ni-Cu-PGE Province
- ✘ Covers the margin of an Archaean Craton - host to world class Ni-Cu-PGE deposits
- ✘ A very poorly explored province
- ✘ Host to Julimar Ni-Cu-PGE deposit and current focus for PGE explorers
- ✘ Perenjori Project lies at its heart
- ✘ Gravity data supports intrusion mapping - a key ingredient to this style



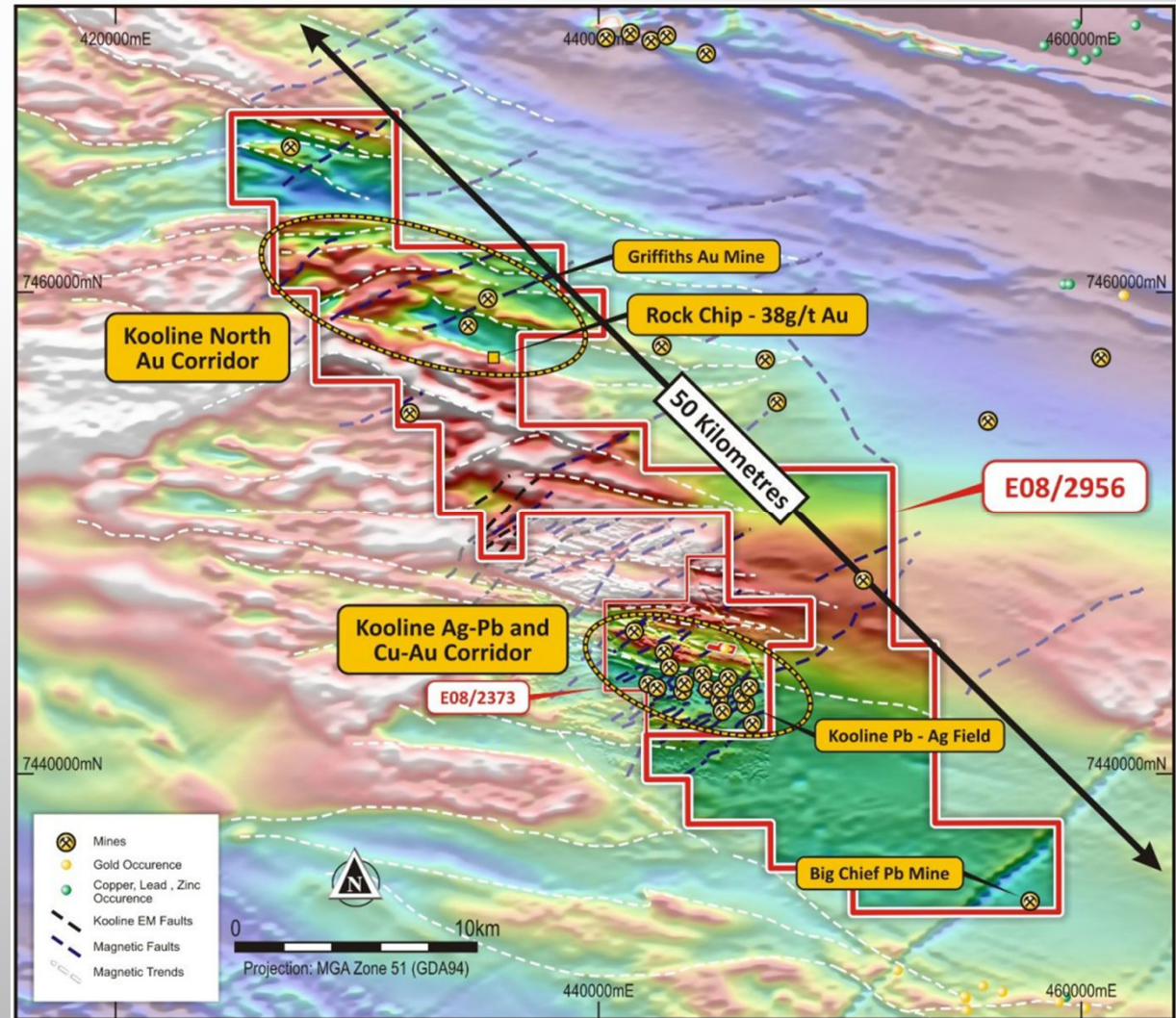
Perenjori: gold overlooked & forgotten

- ✘ Historic BLEG geochem surveys identified extensive areas of highly anomalous gold and arsenic
- ✘ Anomalism appears to be fault controlled
- ✘ Limited drilling returned results of up to 28m @ 0.72g/t gold, demonstrating potential to host large tonnage gold deposits
- ✘ Felsic volcanics and amphibolite hosted - a classic setting in the Yilgarn



Kooline: WA's forgotten Pb-Ag field

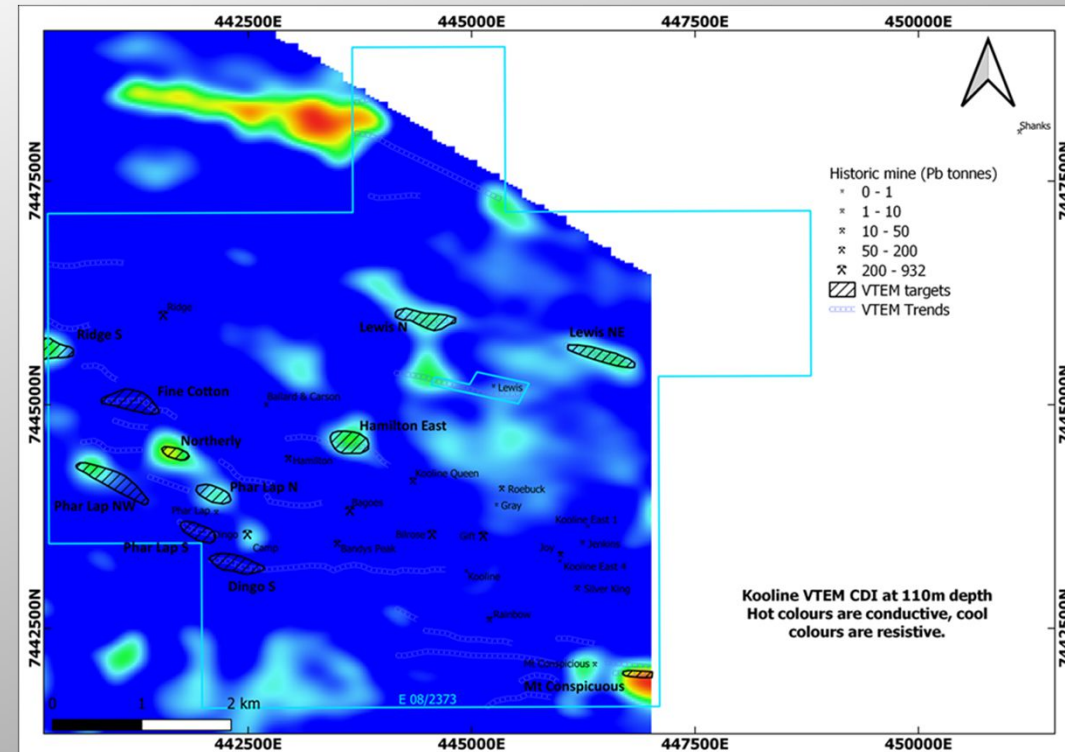
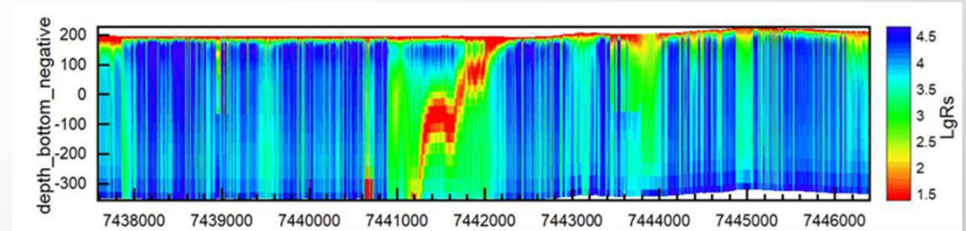
- ✘ 2 ELs covering 386 km²
- ✘ Covers the a 50km corridor with the Baring Downs and Blair Faults, two deep crustal sutures in the Gascoyne Complex
- ✘ Host to historic mines that accessed 10% to 12% lead and 31 to 47g/t silver, WA's richest Pb-Ag mines
- ✘ Past explorers drilled under the mines with mixed success leaving the rest of the tenement poorly tested



Kooline: WA's forgotten Lead-Silver field SUREFIRE RESOURCES NL

- ✘ Channel sampling returned
 - 79%Pb, 232g/t Ag (June Audrey)
 - 55%Pb, 249g/t Ag (Bilrose)
 - 12%Pb, 2.6% Cu (Phar Lap)

- ✘ Re-interpretation of airborne EM anomalies has delivered newly identified bedrock conductors
- ✘ EIS drilling targeted on ground EM
- ✘ High resolution aeromagnetic survey currently underway in the north
- ✘ Targets are crustal sutures that may spawn Abra-style Pb-Ag-Cu-Au intrusive-related targets



Indicative exploration programme



- High resolution ground magnetic and EM orientation surveys at Yidby
- Aeromagnetic and ground EM surveys at Kooline North
- Follow up of Kadji anomalies
- Drilling on the Yidby corridor extension and Kooline EM targets (EIS funding)
- Drilling on Perenjori gold targets
- Programming for RC and diamond drilling at Yidby
- Assessing and interpretation of all drill results

Contact



Vladimir (Roger) Nikolaenko
Executive Chairman / Managing Director

South Point Building
Suite 10
100 Mill Point Road
South Perth WA 6151

 +61 8 6331 6330

 +61 8 9429 8800

 info@surefireresources.com.au

 www.surefireresources.com.au

ASX : SRN
SRNOC