



**Tasman**  
RESOURCES LTD



The image shows a large yellow drilling rig mounted on a truck, positioned in a field of sparse, dry vegetation. In the background, there are several smaller vehicles, including a white truck and a silver car, along with a blue canopy and a tall light pole. The terrain is hilly and covered with low-lying green and brown shrubs under a clear blue sky.

# **The Vulcan Project**

## **The Product of Perseverance**

**SAREIC May 2011**

**Greg Solomon/ Rob Smith**



# Tasman Group Corporate Overview

**Tasman Resources Ltd  
(TAS)**

**Minerals**  
Cu, Au, U, Ag,  
Pb, Zn.

16.8%

**Eden Energy Ltd  
(EDE)**

100%

**Pyrolysis**

100%

**Hydrogen-Hythane**

100%

**Dual fuel**

50%

**Gas (UK)**

19.7%

**Fission Energy Ltd  
(FIS)**

50%

**Mt Thirsty Co-Ni**

100%

**Uranium – SA, WA**

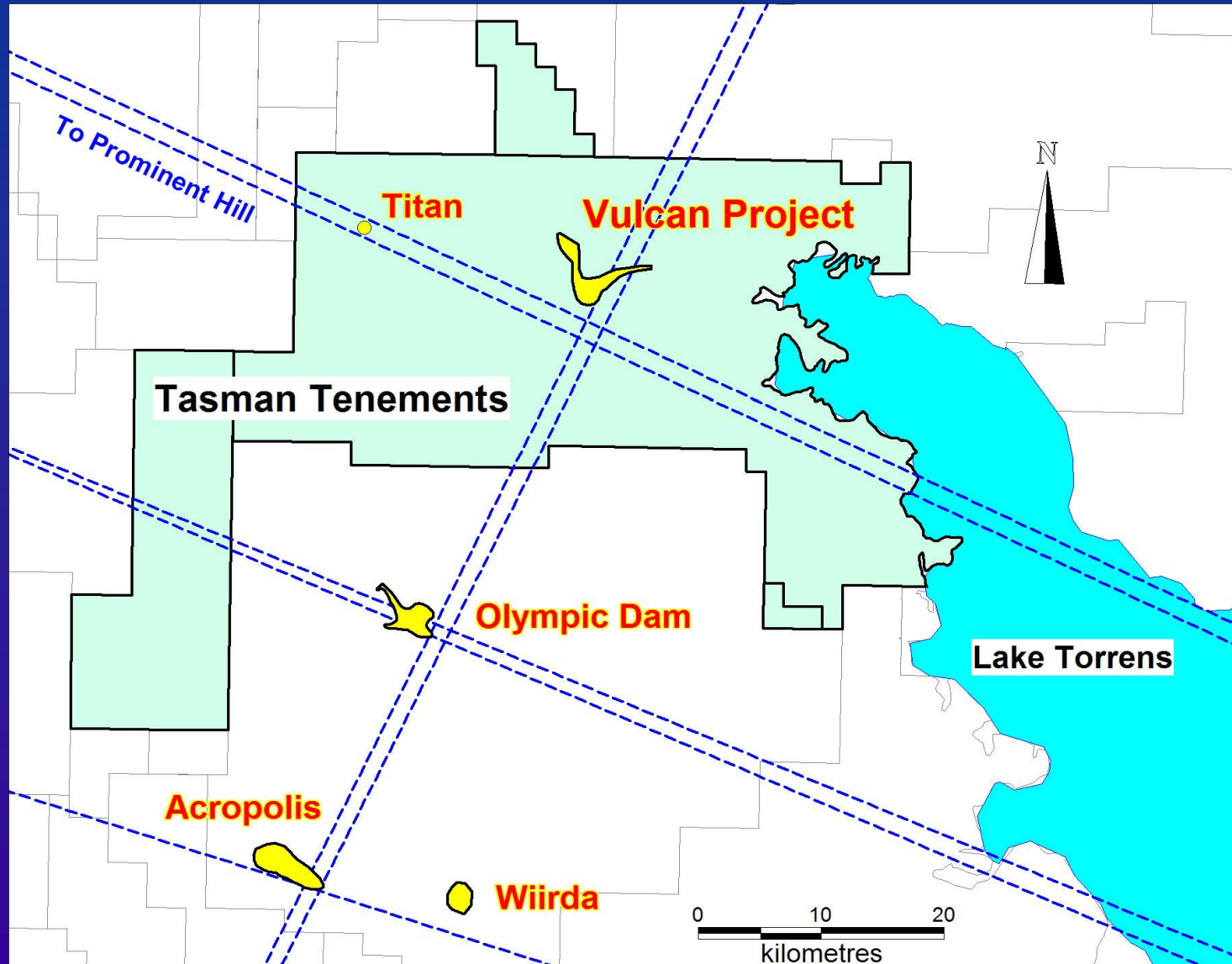


# Lake Torrens Project Summary

- **> 2,000 km<sup>2</sup> of tenements adjacent to Olympic Dam**
- **Six IOCGU targets within ~ 35 km of Olympic Dam**
- **Vulcan - new IOCGU system discovered Nov 2009**
  - Similar target area to OD > 12 km<sup>2</sup>
  - 30 km north of Olympic Dam; priority tectonic address
  - IOCGU min./alt. (all 8 holes) - Cu, Au, Ag, U, Mo (+ REE)
  - 57 m of strong chalcopyrite/pyrite mineralisation in VUD 3
  - +150m “classic” min. hematite-rich breccias in VUD 7
  - Classic zonation (bornite/chalcopyrite/pyrite) in VUD 8

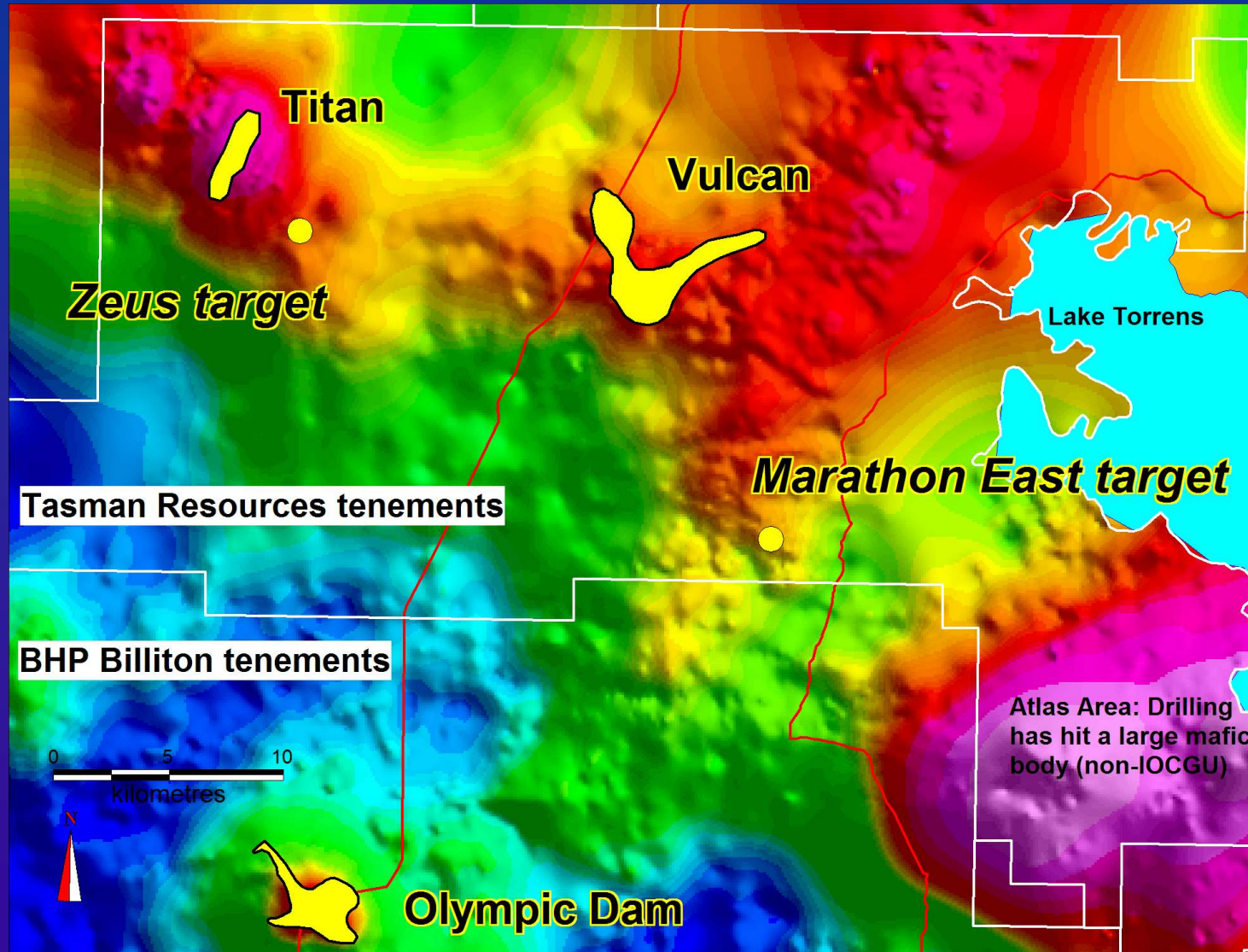


# Vulcan Project: Showing Tectonic Lineaments (WMC, 1975)



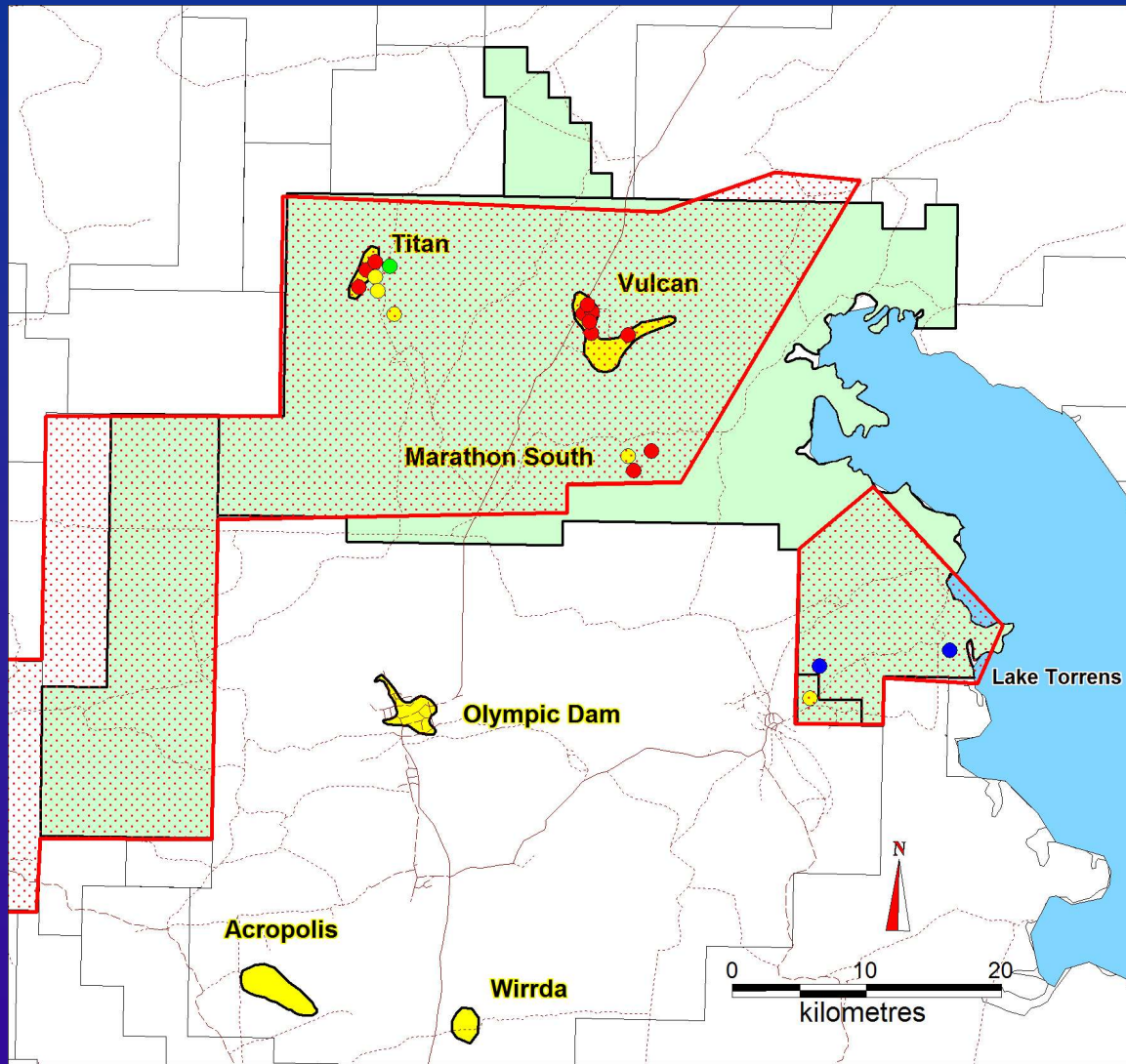


# Tasman IOCGU Targets





# Lake Torrens Project: Perseverance



**1976 – 1981 WMC Geophysics, Drilling**

**1996 – Phelps Dodge**

- Drilling

**2003 – 2009 Tasman (Titan, Marathon South, Atlas, other prospects), including:**

- Gravity

- Magnetics

- Electrical

- Drilling

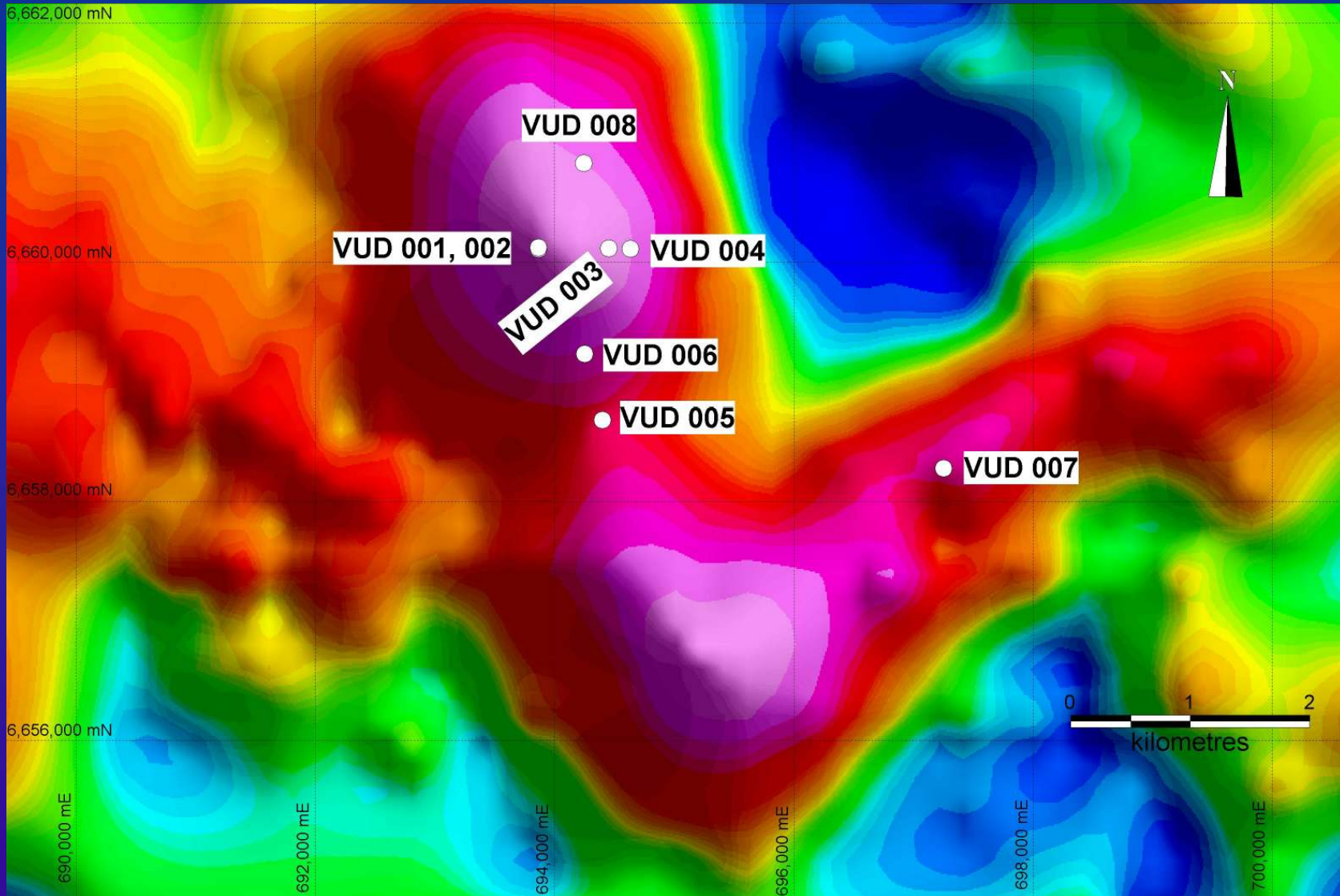
**2009 – 2011 Tasman (Vulcan)**

- Gravity

- Drilling



# Vulcan IOCGU Project



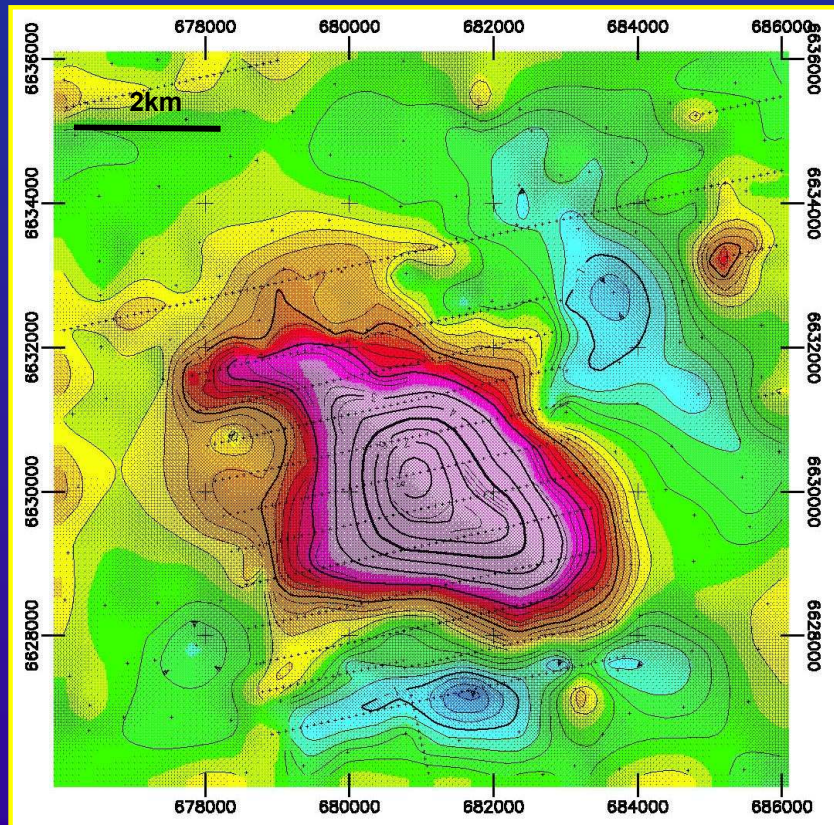
**Residual Gravity Image showing Tasman Drilling**



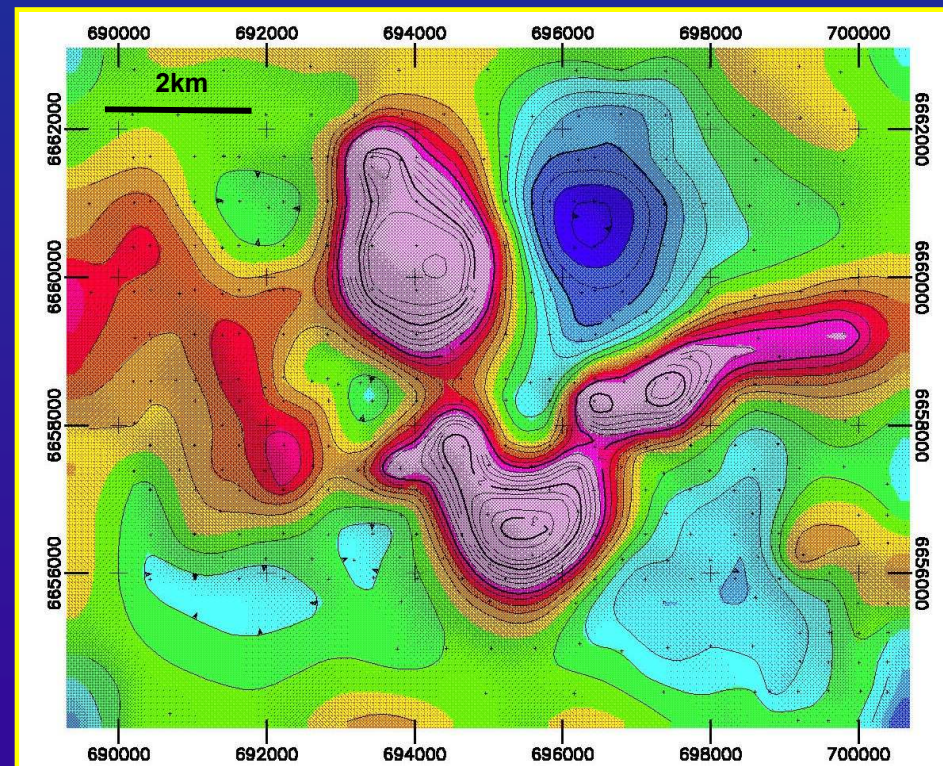
# Olympic Dam - Vulcan: Residual Gravity Comparison

(calculated residual gravity response if Vulcan at same depth as OD)

## Olympic Dam



## Vulcan

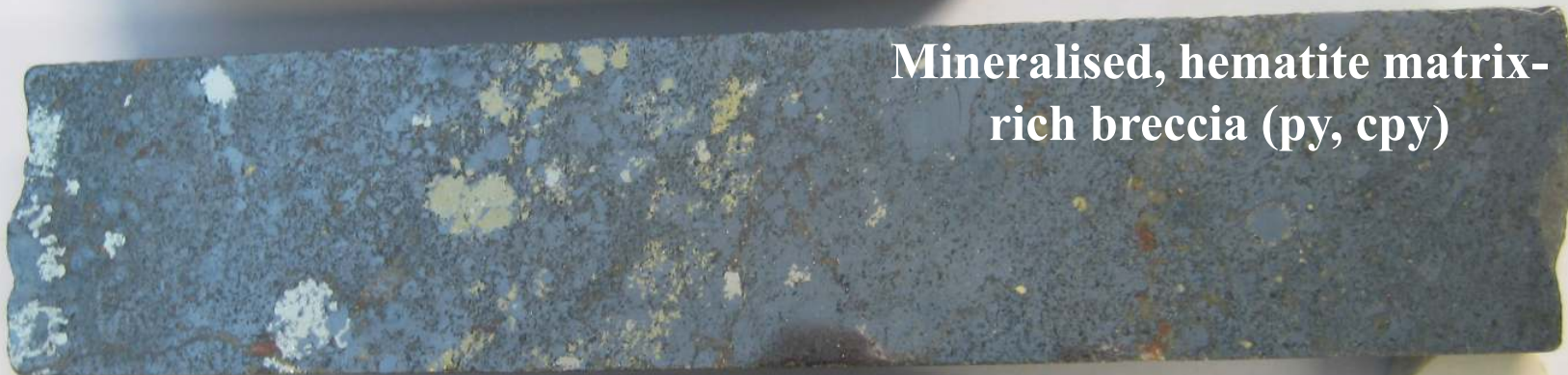




# Vulcan VUD 001



**Heterolithic, sulphide-rich breccia**



**Mineralised, hematite matrix-rich breccia (py, cpy)**

**Heterolithic, carbonate breccia (py, cpy, hem)**





# Vulcan: VUD 3

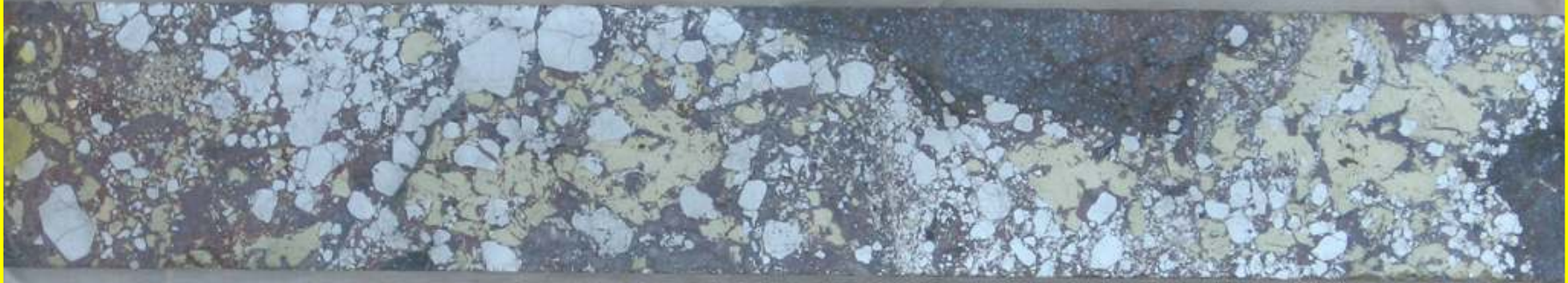
## Massive Sulphides - 930.2 - 930.9m



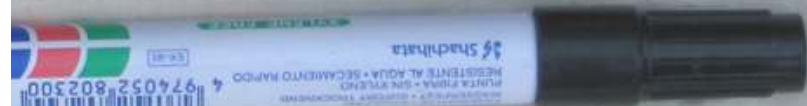


## Vulcan VUD 003: Cu - Au - U<sub>3</sub>O<sub>8</sub> Mineralisation

Core from interval: 0.34m at 5.9% Cu, 2.23g/t Au



Core from interval: 0.75m at 4.4% Cu,  
1.34g/t Au, 0.58kg/t U<sub>3</sub>O<sub>8</sub>





## Vulcan VUD 3

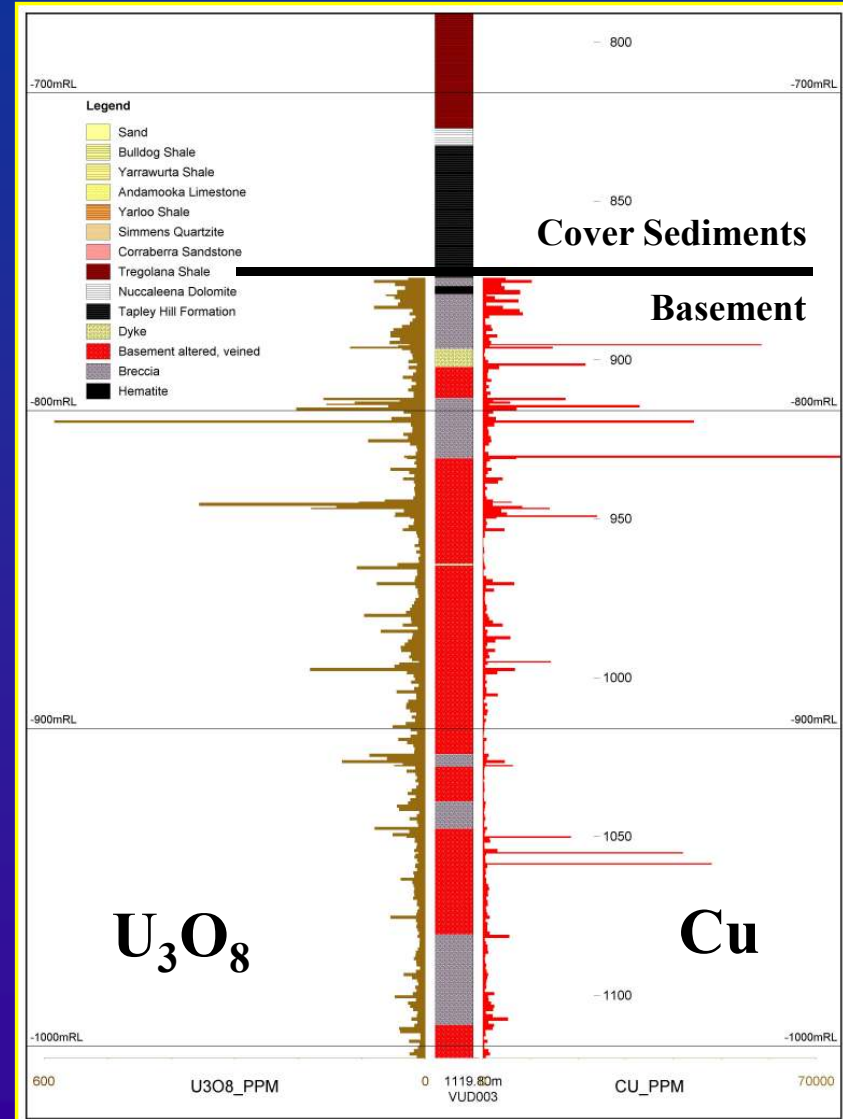
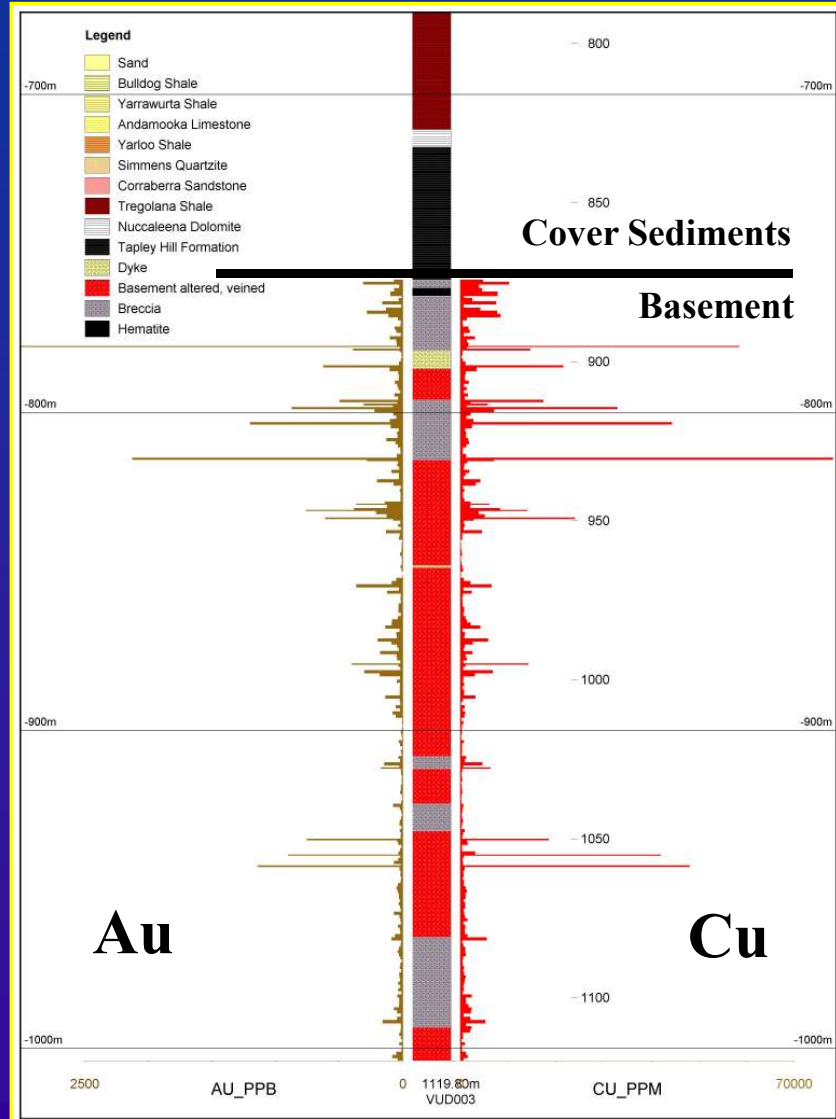
- **245m Alteration and Mineralisation, includes:**

<u>From</u>	<u>To</u>	<u>m</u>	<u>Cu (%)</u>	<u>Au (g/t)</u>	<u>U<sub>3</sub>O<sub>8</sub> (kg/t)</u>
874.20	930.85	<b>56.65</b>	<b>0.59</b>	0.17	0.05
<i>includes:</i>					
895.08	895.42	0.34	<b>5.85</b>	<b>2.23</b>	0.03
and					
912.00	919.80	<b>7.80</b>	<b>1.21</b>	<b>0.35</b>	<b>0.14</b>
<i>includes:</i>					
919.05	919.80	0.75	4.44	1.34	<b>0.58</b>
and					
930.20	930.85	0.65	<b>7.80</b>	<b>2.41</b>	0.03



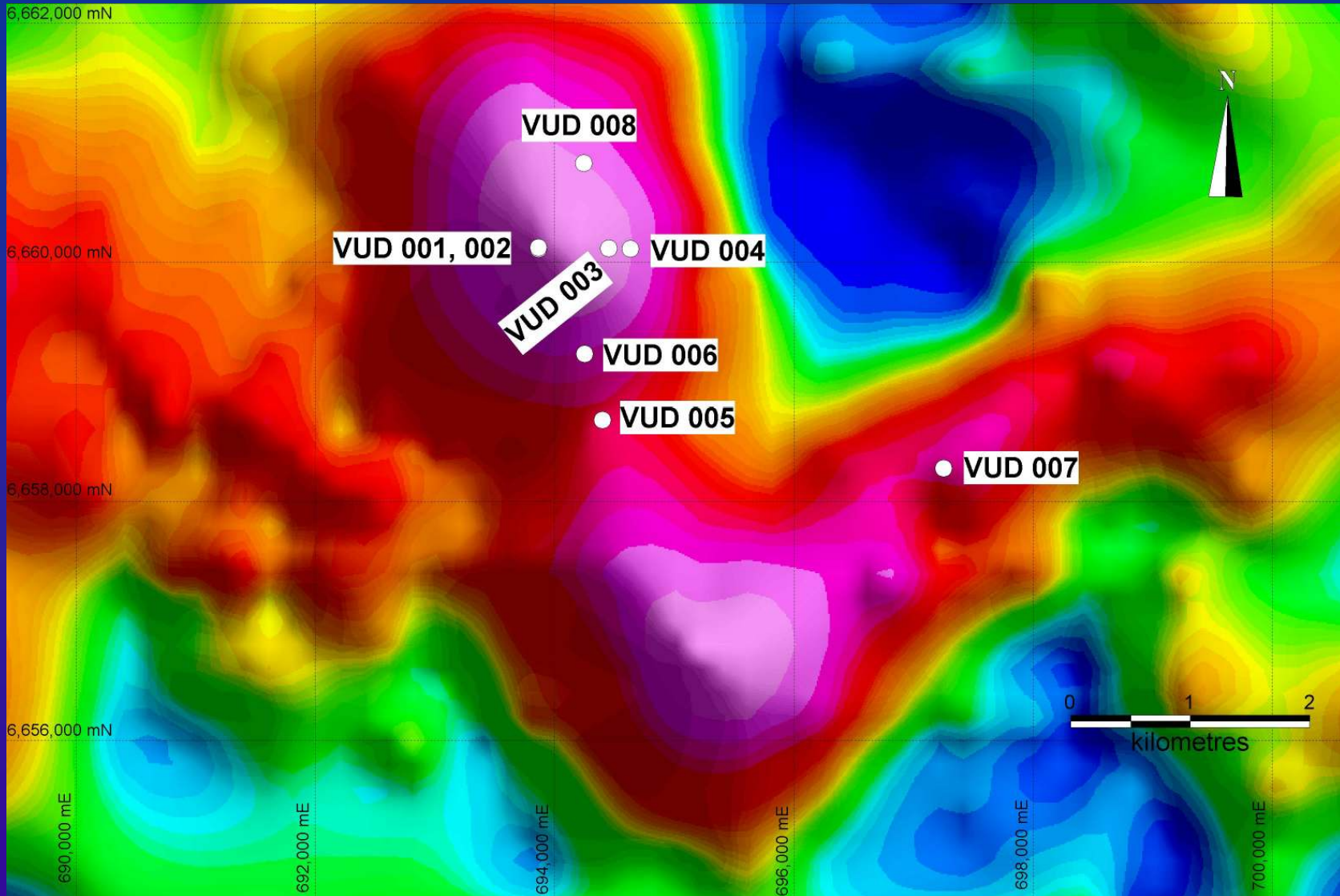
# Vulcan VUD 003

## Down-hole correlation of IOCGU metals





# Vulcan IOCGU Project



**Residual Gravity Image showing Tasman Drilling**



# Vulcan VUD 7: +150m of Hematite Breccia





## Vulcan VUD 7

- **150m+ Alteration and Mineralisation, includes:**

From To m Cu (%) Au (g/t) U<sub>3</sub>O<sub>8</sub> (kg/t) Mo (%)

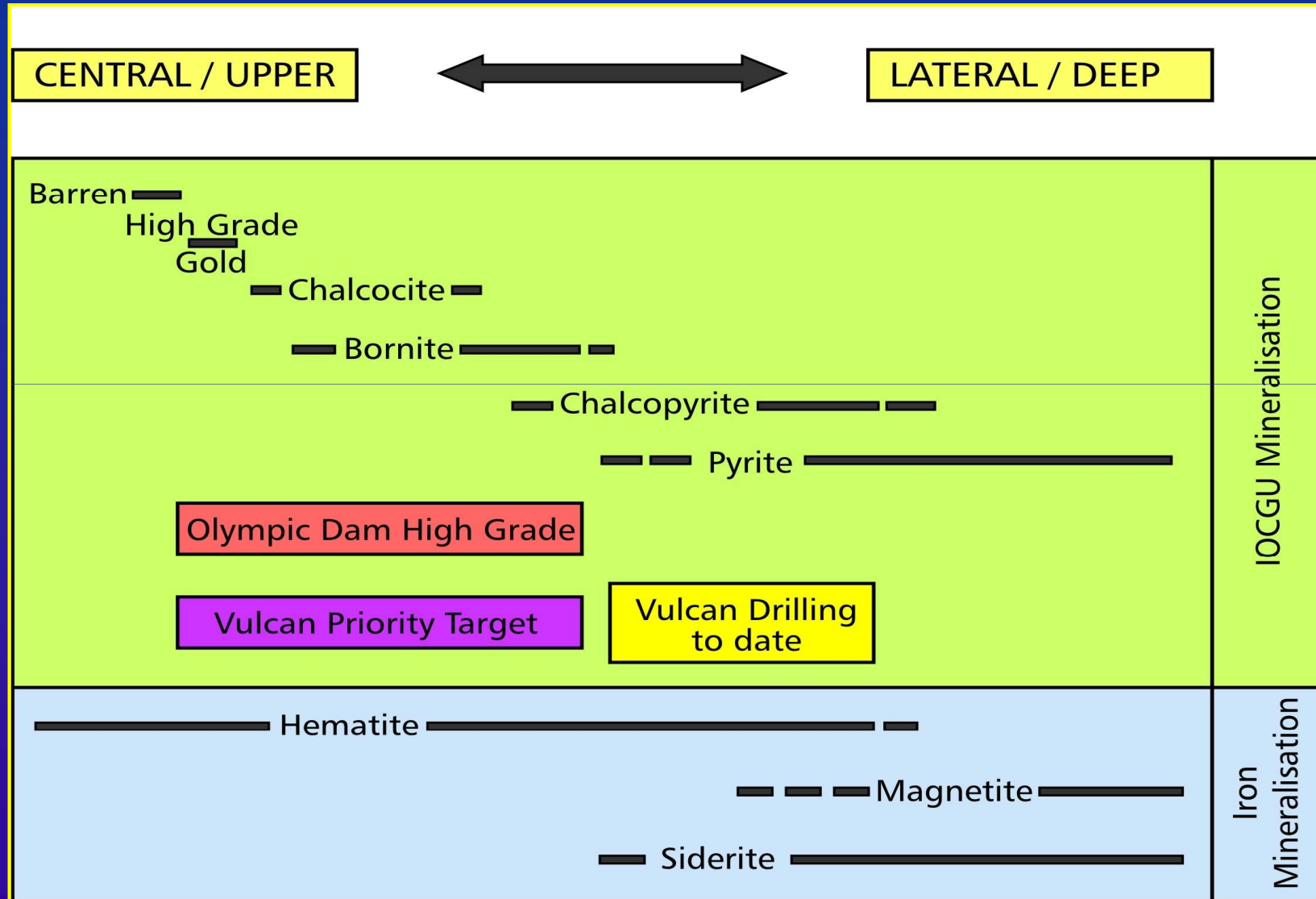
1065 1228 **163** **0.23** **0.08** **0.04** **0.01**

Includes:

1118 1208 **90** **0.25** **0.09** **0.05** **0.02**

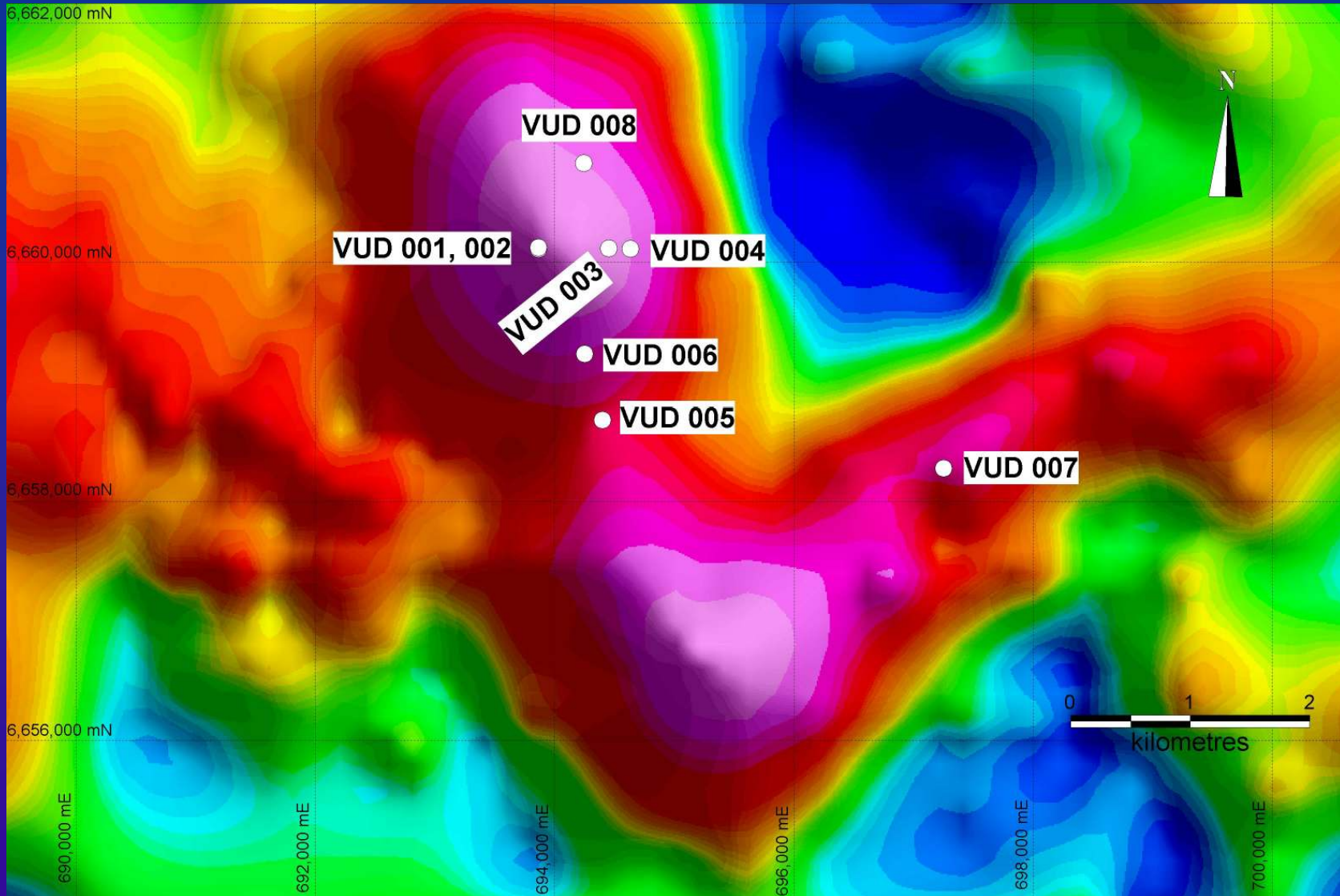


# Olympic Dam – Vulcan Zonation Comparison





# Vulcan IOCGU Project

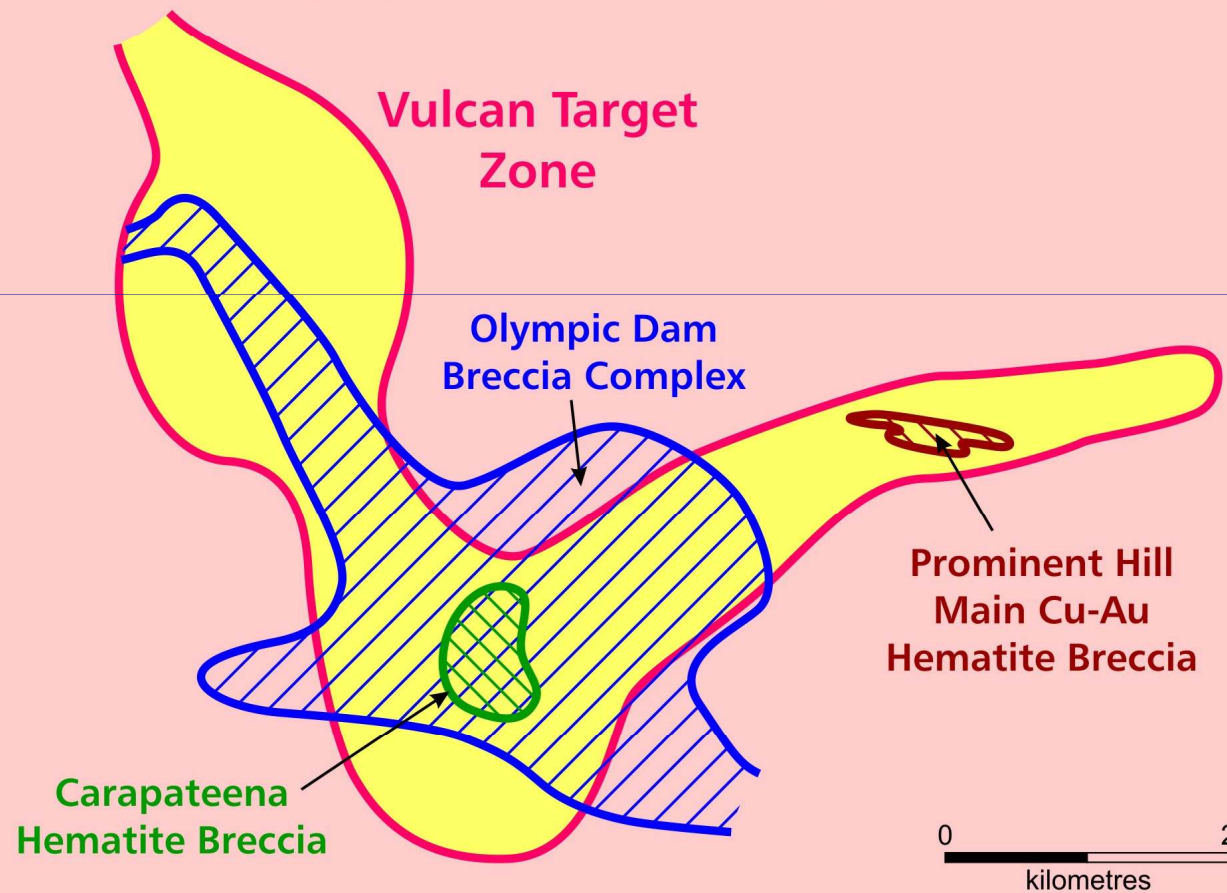


**Residual Gravity Image showing Tasman Drilling**



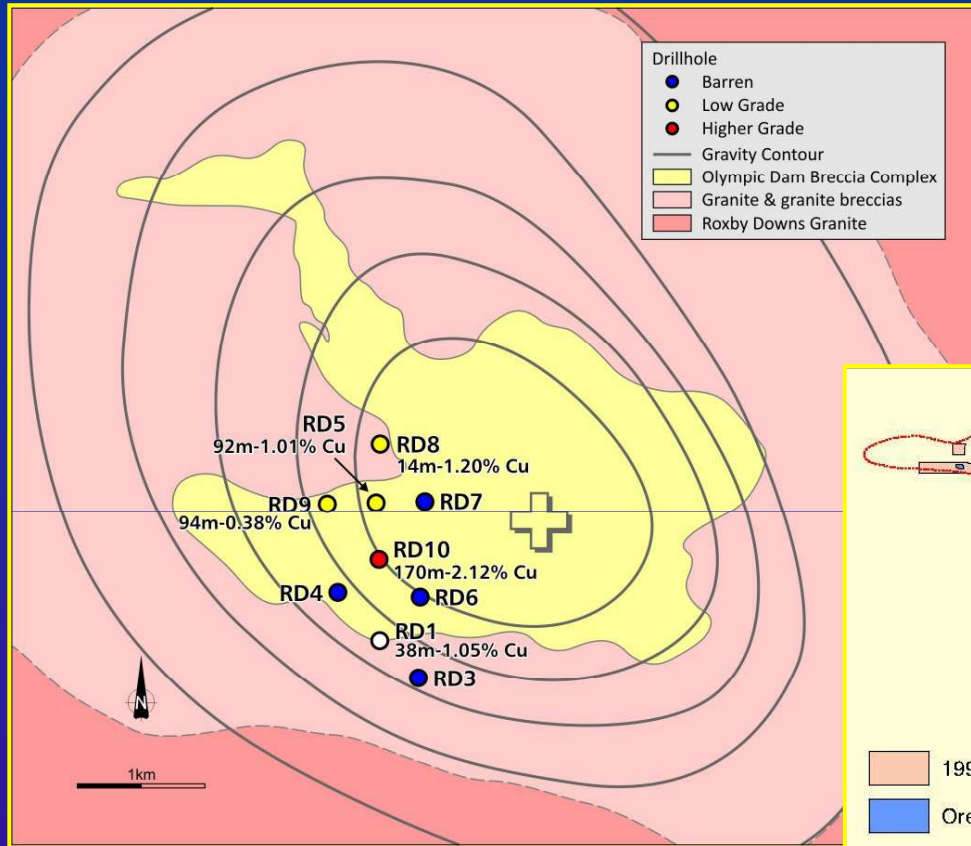
# Vulcan Prospect: Comparisons

## VULCAN TARGET Comparison with other Olympic Province IOCG Deposits

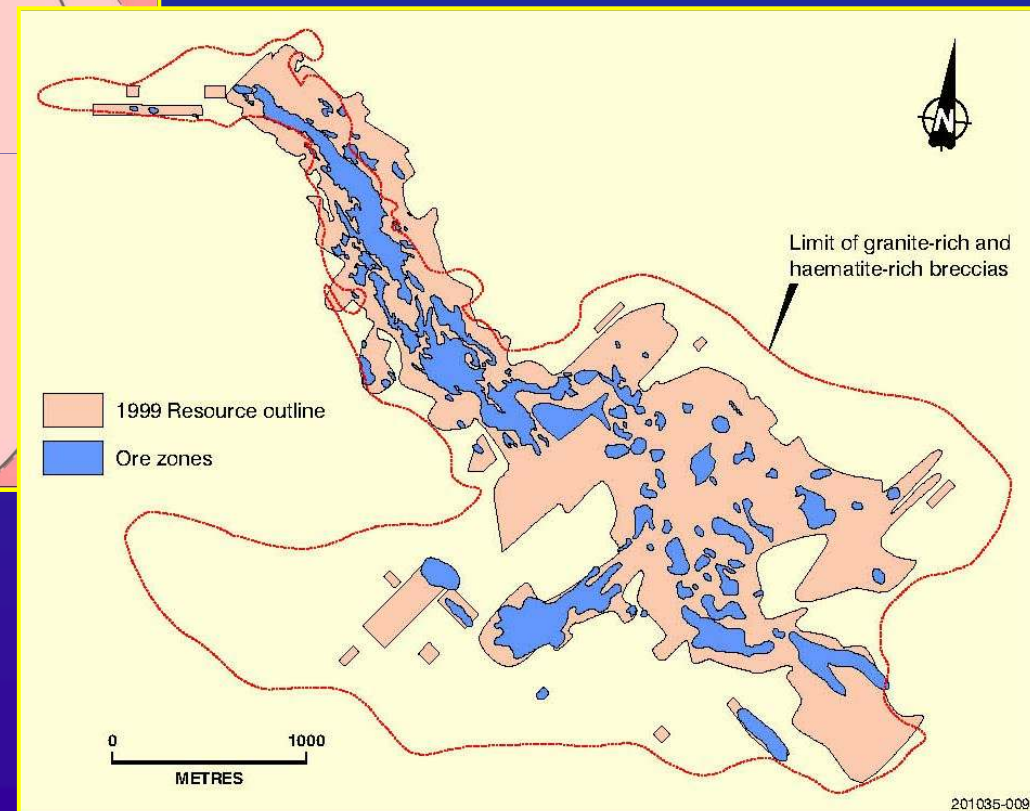




# Large Systems: Perseverance Required



## Olympic Dam Resource Outline (MESA Journal 2001)



Initial Drilling at Olympic Dam (9 holes, 1976)



# **Vulcan IOCGU Project: Future Program**

- **Geological and geophysical review, remodelling**
- **Dating of selected samples**
- **Select new drill targets**
- **Resolve access issues and test highest priority parts of Vulcan IOCGU system**



# Corporate Structure - April 2011

- Issued Shares (TAS)– 202,909,283
- Options (TASOB) – 20,587,791
  - 10c / 30 June 2012
- Market Cap - \$23.3m
- Current Rights Issue
- Eden Energy Shareholding
  - 35m shares - \$3.8m
- Fission Energy Shareholding
  - 25m shares - \$1.75m



## Disclaimer

The interpretations and conclusions reached in this presentation are based on current geological theory and the best evidence available to the authors at the time of writing. It is the nature of all scientific conclusions that they are founded on an assessment of probabilities and, however high these probabilities might be, they make no claim for complete certainty. Any economic decisions that might be taken on the basis of interpretations or conclusions contained in this report will therefore carry an element of risk.

It should not be assumed that the reported Exploration Results will result, with further exploration, in the definition of a Mineral Resource.



## Competent Person's Statement

The information in this presentation that relates to Exploration Results and Activities is based on information compiled by Robert Smith and Michael Glasson who are Members of the Australian Institute of Geoscientists. Robert Smith and Michael Glasson are full-time employees of the Company. Robert Smith and Michael Glasson have sufficient experience which is relevant to the style of mineralisation and type of deposit under consideration and to the activity which they are undertaking to qualify as Competent Persons as defined in the 2004 Edition of the “Australasian Code for Reporting of Exploration Results, Mineral Resources and Ore Reserves”. Robert Smith and Michael Glasson consent to the inclusion in the report of the matters based on their information in the form and context in which it appears.



**Tasman**  
RESOURCES LTD

## **Contact Details**

Greg Solomon/ Rob Smith  
Level 40, Exchange Plaza,  
2 The Esplanade, Perth. Western Australia  
Telephone: +61 8 9282 5889  
Website: [tasmanresources.com.au](http://tasmanresources.com.au)