



PARINGA RESOURCES LIMITED

ABN 44 155 933 010

COMPANY PRESENTATION

March 2015

Investment Highlights

Potential to establish a high margin business based on long term contracted sales with large, stable coal-fired power plants that provide a highly competitive source of base-load energy in the US

Pre-Feasibility Study (“PFS”) highlights: Buck Creek No.1 Mine

- ✓ Annual saleable coal production target: 3.8 Mtpa
- ✓ Strong operating cashflow (EBITDA): US\$81 million
- ✓ High margin business (+35% EBITDA margins) to materially improve as energy markets recover
- ✓ Low Opex of US\$30.19 /ton comparable to adjacent highly profitable underground operations
- ✓ Low initial capital costs of US\$127 million based on firm tender submission process
- ✓ Conservative sales price assumptions benchmarked against recent long term contracted sales
- ✓ Paringa’s target Ohio River market highly competitive compared to delivered natural gas prices
- ✓ New independent sources of coal supply highly valued by the Ohio River market
- ✓ Paringa aims to lock-in forward sales contracts with the Ohio River market from Q2 to Q3 2015
- ✓ Established transportation infrastructure and key environmental permits secured

Buck Creek No.1: Pathway to Production

Complete Required Technical Studies



Assess Financing Alternatives



Execute Forward Sales Contracts



Execute Financing Facilities

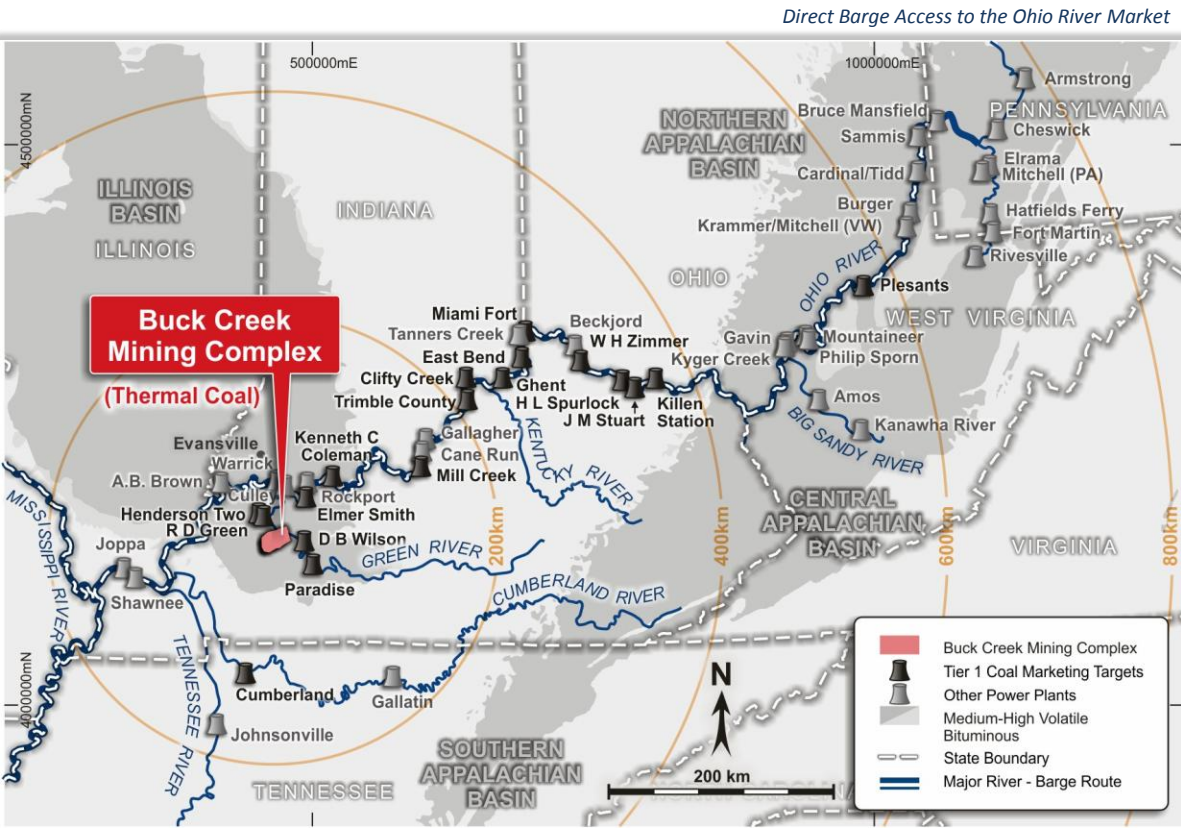


Start Construction

Buck Creek No.1 Mine is a first stage development within a larger mining complex with excellent optionality for high margin, low capex expansions

Target Market: The Ohio River Scrubber Power Plants

Paringa's scrubbed Ohio River market consists of 16 power plants that consumed over 50 million tons of coal in 2013 with average delivered coal fuel costs of circa US\$53 per ton in 2014 (natural gas equivalent price of US\$2.29 per mmbtu)



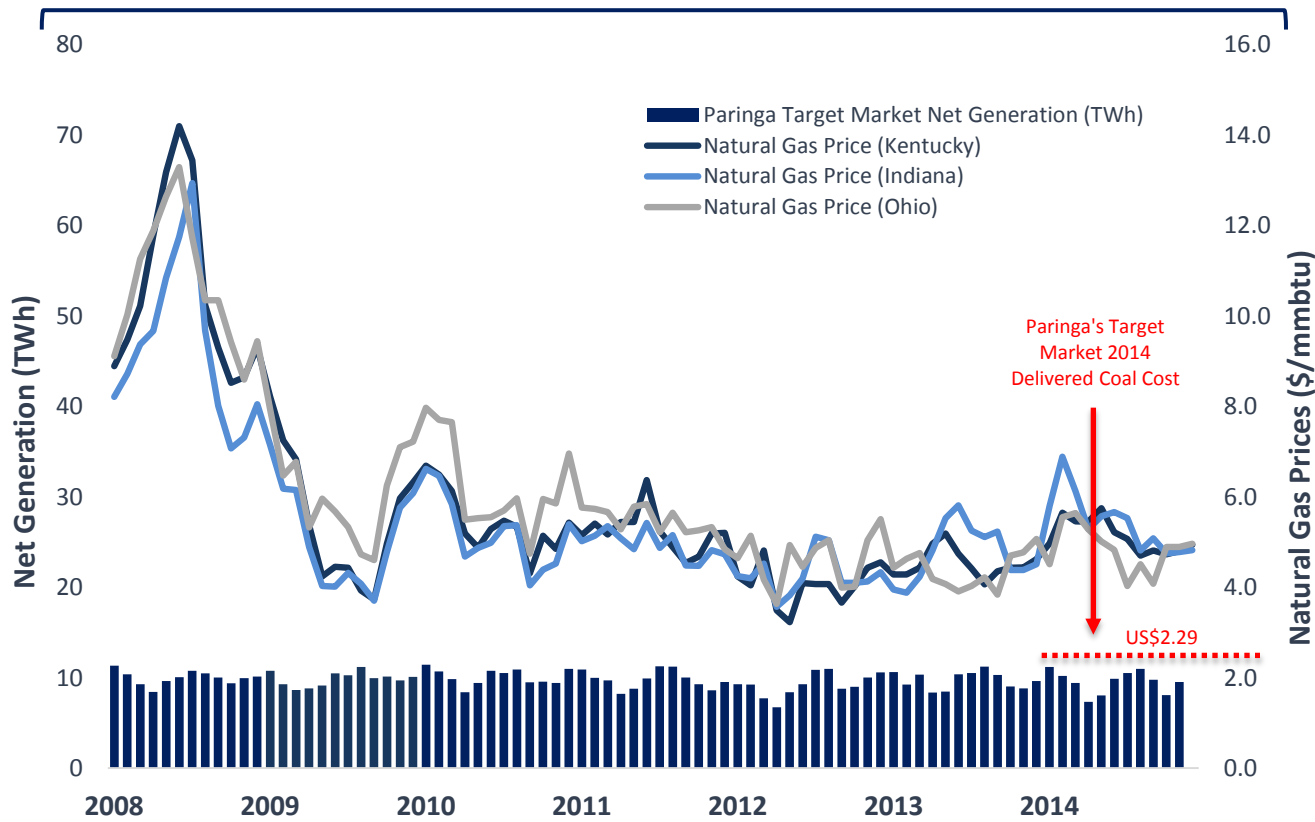
Ohio River Market			
Coal Power Plant	Capacity (GW)	2014 Delivered Coal Costs (US\$/t)	Natural Gas Equivalent (US\$ per mmbtu)
Clifty Creek	1.3	67.76	2.98
DB Wilson	0.4	50.26	2.15
RD Green	0.4	49.42	2.17
JM Stuart	2.4	51.30	2.20
Killen	0.6	49.44	2.18
East Bend	0.6	50.11	2.17
Miami Fort	1.0	48.40	2.06
WH Zimmer	1.3	51.06	2.11
HL Spurlock	1.4	53.91	2.38
Henderson 2	0.4	57.66	2.38
Ghent	2.0	51.04	2.25
Mill Creek	1.5	56.04	2.34
Trimble County	1.3	51.07	2.31
Elmer Smith	0.4	44.36	2.02
Cumberland	2.4	57.79	2.41
Paradise	2.2	52.18	2.25
Average		53.18	2.29

Paringa's target market have installed scrubber technology (removes ~97% SO₂) and are largely compliant with Mercury Air Toxics Standards ("MATS") expected to come into effect in 2015

Stable, Competitive, Base-Load Energy Source

Paringa's target Ohio River market has continued to generate a consistent, low cost, base-load fuel source despite volatility in delivered natural gas prices in Kentucky, Indiana and Ohio

Paringa's Target Market Net Power Generation Remains Constant Despite Natural Gas Volatility



Source: EIA

J M Stuart Coal Power Plant (2.4GW)



W H Zimmer Coal Power Plant (1.3GW)



Based on discussions with Paringa's target market, new independent sources of supply are highly valued as, over the past 10 years, coal supply into the market has become increasingly concentrated into a few major Illinois Basin coal producers

Facilitates High Margin Business for Coal Producers

Paringa's target Ohio River market has remained a highly competitive source of power relative to delivered natural gas prices

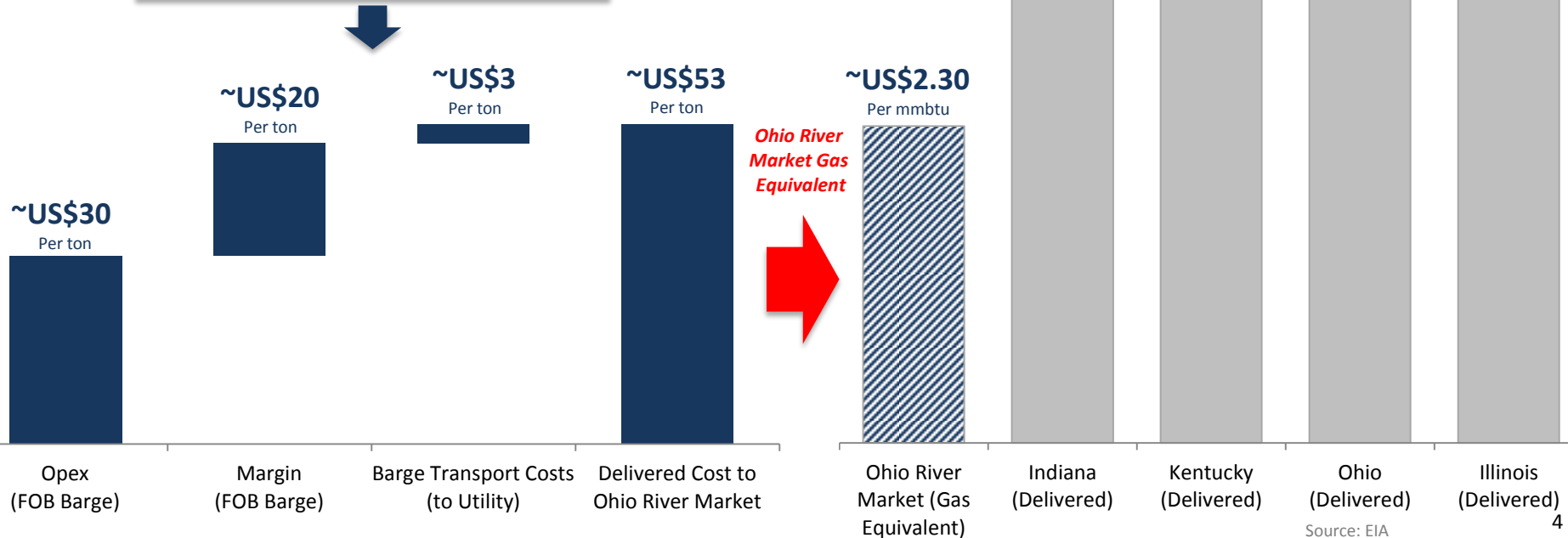
Typical Delivered Coal Price for Ohio River Market

Latest Delivered Natural Gas Prices (Dec 14)

VS

Delivered cost of coal to utilities along the Ohio River based on Paringa's average operating cost FOB Barge (steady state), margin based on a sales price of ~US\$50 per ton FOB Barge and barge transportation costs of US\$3 per ton to the utility

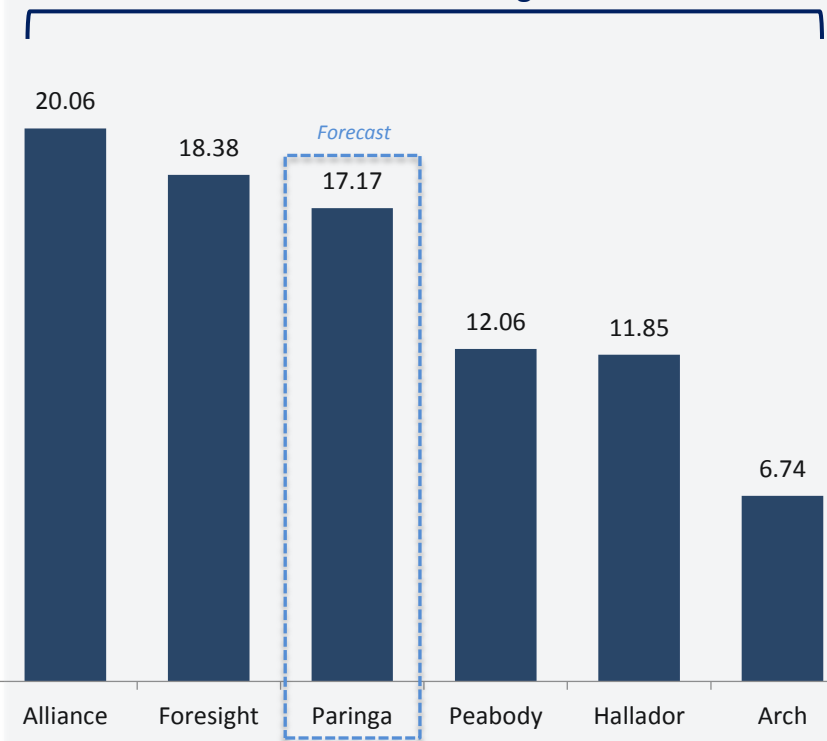
Due to transportation costs and pipeline and storage capacities, delivered natural gas prices in the region are generally higher than prices in North Eastern US



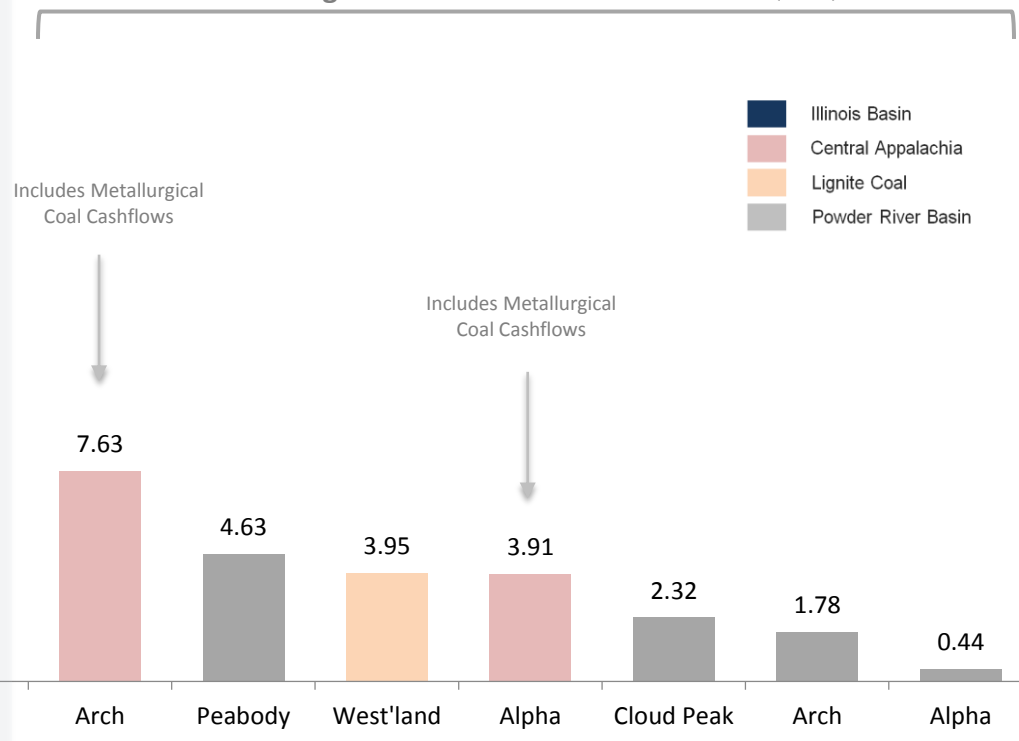
Illinois Basin Producers: High Margin Businesses

Illinois Basin continues to displace higher delivered cost coal basins (i.e. Central Appalachia) and efficient Illinois Basin coal producers continue to sustain high margins despite weak energy markets

2014 Illinois Basin Margins (US\$/t)



2014 Margins Other Relevant US Producers (US\$/t)



Paringa's margin based on PFS forecast sales price for FY18 of US\$47.36/t and average annual operating costs of US\$30.19/t (FOB Barge)

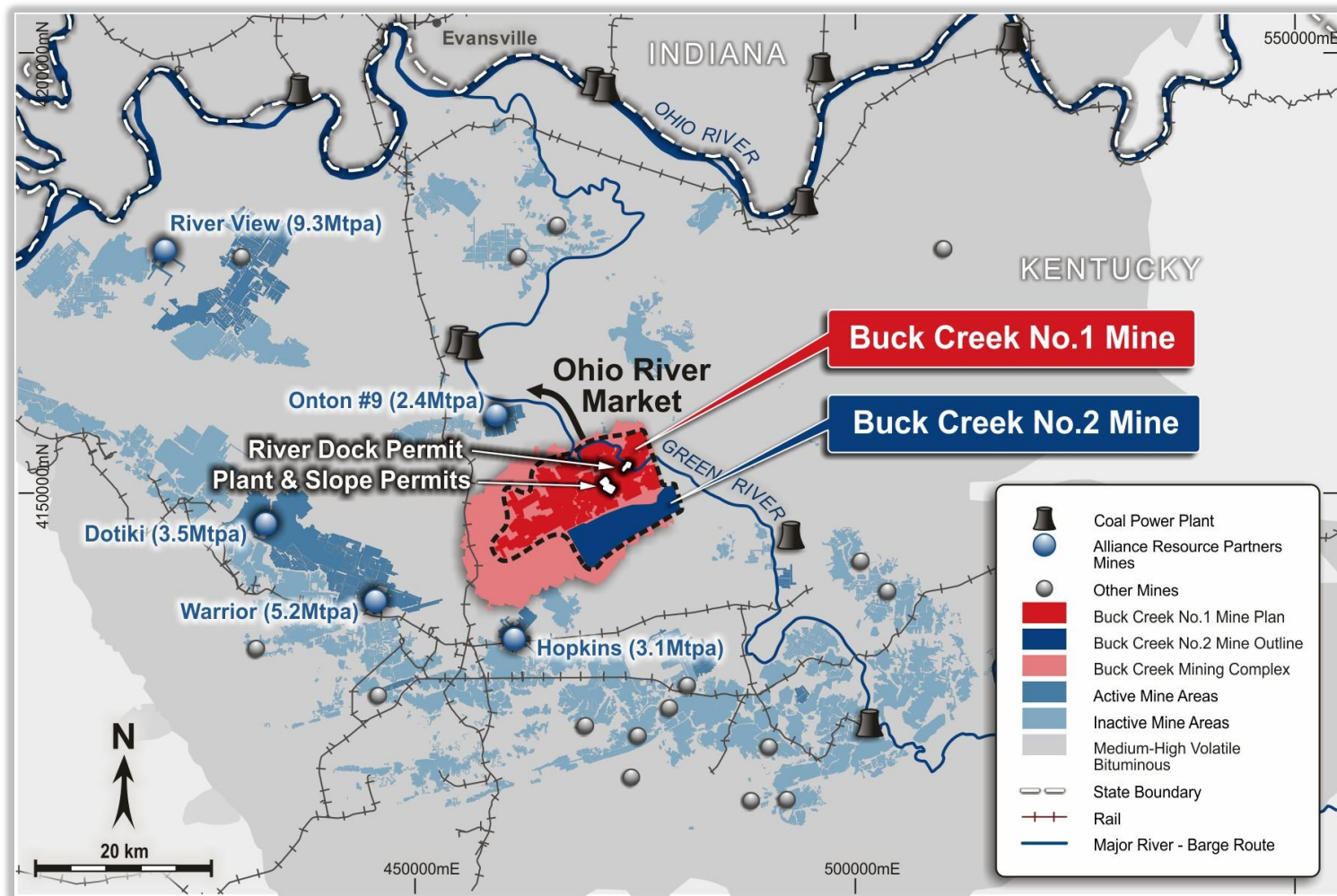
Unlocking the Illinois Basin

The Illinois Basin produced 137 million tons of thermal coal in 2014 from circa ~80 operating mines that vary in mining methods, economic reserve life, coal quality (e.g. chlorine content), transportation infrastructure and profitability

Keys to Unlocking the Illinois Basin:	Buck Creek	Comment
➔ Large Contiguous Economic Resource and Reserve Base	✓	Resource: +211 million tons (Measured & Indicated) Reserve: +63 million tons (Proven & Probable)
➔ High Quality Coal with Lower Chlorine Content ¹	✓	11,855 Btu/lb and lower chlorine 0.18% (most new developments have chlorine +0.30%)
➔ Highly Productive Coal Seam	✓	Mining the highly productive WK No.9 seam, the 2 nd largest producer of coal in the US
➔ Low Operating Costs (FOB Barge)	✓	Opex of US\$30.19/t comparable to adjacent highly productive mines
➔ Low Capex Development	✓	Non-longwall mining method (ie room-and-pillar) using leased equipment
➔ Direct Barge Access to the Ohio River Market	✓	Provides a significant transportation cost advantage
➔ New Independent Coal Source for the Ohio River Market	✓	Coal supply into the Ohio River Market largely dominated by a few major Illinois Basin producers

Buck Creek: Large, Growing, Strategic Coal Asset

Buck Creek Mining Complex is located in the heartland of the Illinois Basin coal industry, one of the world's best mining jurisdictions and is surrounded by some of the most highly productive and profitable underground coal mines in the US



Buck Creek No.1 Mine - PFS Highlights

Buck Creek No.1 Mine is a low capex and permitted coal project with steady-state annual production of 3.8 million tons per annum that generates strong EBITDA margins of +35% in the current market

High Margin Business¹

+35% EBITDA Margins

Strong EBITDA¹

US\$81 million

Low Operating Costs¹

US\$30.19 /ton

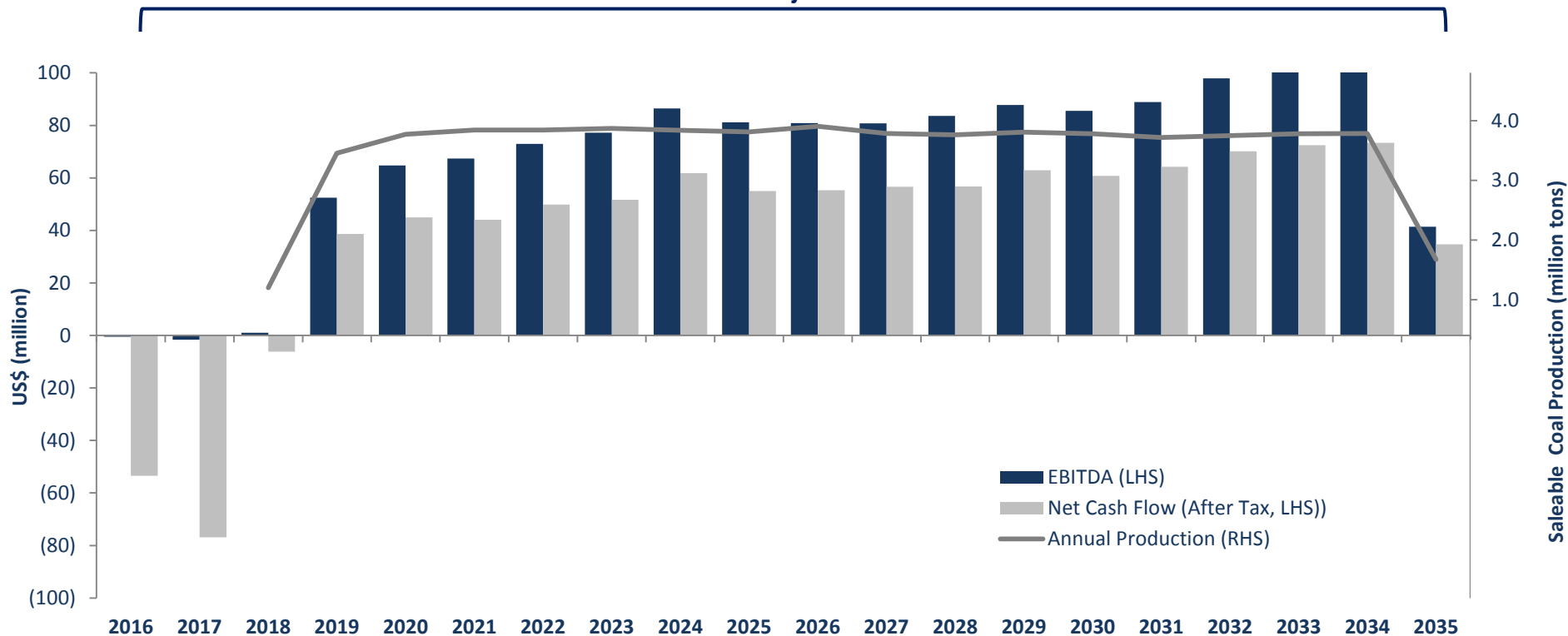
Buck Creek No.1 PFS Key Parameters

Clean Coal Production Target	3.8Mtpa	
ROM Production Target	5.2Mtpa	
Coal Product Mix	30% Production: 11,800 Btu/lb 70% Production: 11,200 Btu/lb, 12% Ash	
Initial Mine Life	18 years	
Coal Geology	Highly Productive WK No.9 Seam	
Mining Method	Room-and-Pillar <small>(with continuous miners)</small>	
Mine Access	Slope and Shaft	
Coal Handling & Process Plant	2-Stage Dense Media	
Access to Market	Barge Load-out <small>(directly onto Green River)</small>	
Initial Capital Cost	US\$127 million	
Weighted Average Sales Price Received	2018 US\$47.36 /ton	2035 US\$55.63 /ton
EBITDA after Coal Sales Price Increase	Sales Prices +5% US\$93 million	Sales Prices +10% US\$102 million

Generating Cashflow in Current Market

PFS results indicate the Project generates significant positive cashflow using sales price assumptions benchmarked to recent contracted sales with local utilities and operating costs comparable to adjacent operations

Buck Creek No.1 Mine Project Cashflows and Production



Potential for Buck Creek No.1's strong financial returns to materially improve as domestic and international coal markets recover

Sales Price Assumptions In-line with Recent Sales

Paringa's forecast coal sales prices used in the PFS are based on Hanou Energy Consulting, LLC's Illinois Basin Coal Price & Demand Forecast (2014-2034) which are conservative compared to recent long-term contracted sales with Kentucky utilities

Recent Contracted Sales for Utilities Located in Kentucky (Equivalent Paringa FOB Barge 11,800 Btu/lb)

Date	Coal Producer	Utility	Term (Years)	Tons (mt)	Heating Content (Btu/lb)	Adjusted Sales Price (US\$/t)			
						2016	2017	2018	2019
Jan-15	Foresight	EKPC	2	0.48	11,300	48.07	50.05	-	-
Jan-15	Alliance	LG&E	1	1.50	11,500	48.74	-	-	-
Jan-15	Alliance	LG&E	1	1.50	12,000	46.22	-	-	-
Jan-15	Ken American	Big Rivers	4	1.80	11,700	45.76	49.77	51.08	52.44
Dec 14	Armstrong	LG&E	2	2.00	11,000	43.58	44.80	-	-
Dec 14	Ken American	LG&E	4	3.00	11,800	48.50	49.38	51.00	52.00
Dec-14	Alliance	LG&E	2	1.44	11,500	47.92	49.51	-	-
Dec-14	Alliance	EKPC	2	0.48	11,500	48.43	48.43	-	-
Aug 14	Alliance	EKPC	2	0.48	11,500	49.10	51.05	-	-
Jul-14	Rhino	LG&E	2	1.60	11,300	47.82	49.56	-	-
Jul-14	Ken American	LG&E	0	1.00	11,800	48.50	-	-	-
Average						47.51	49.07	51.04	52.22

Compared to:

2018 PFS Model Sales Price
(FOB Barge 11,800 Btu/lb)
= US\$49.46 /t

Compared to:

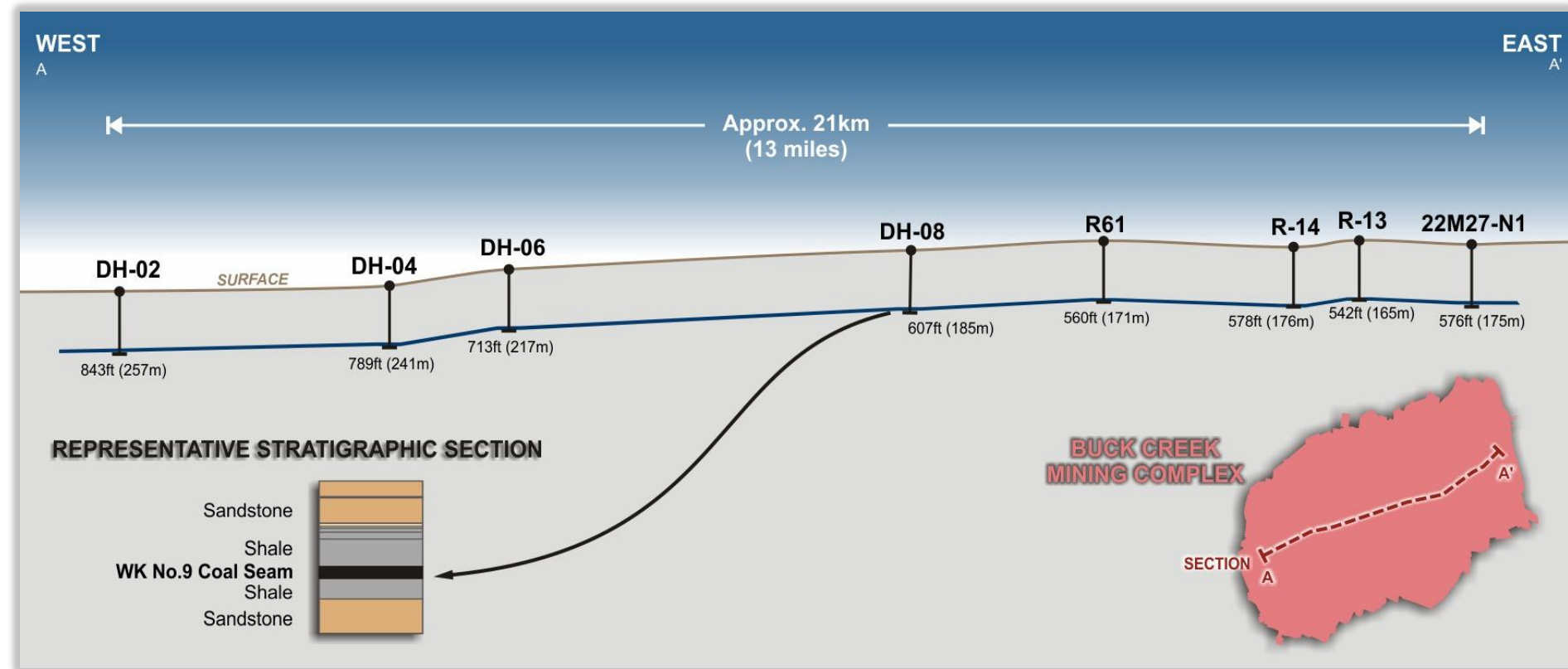
2019 PFS Model Sales Price
(FOB Barge 11,800 Btu/lb)
= US\$49.96 /t

Source: Kentucky Public Service Commission

Paringa has been building relationships with all potential customers and aims to "lock-in" forward sales contracts with local utilities from Q2 to Q3 2015

Mining Highly Productive WK No.9 Seam

The Western Kentucky No.9 coal seam (“WK No.9 seam”) within the Buck Creek Project is a flat (2° to 3° degree dip), consistent, and laterally continuous coal seam with coal core yields of +93%, resulting in high mining productivity

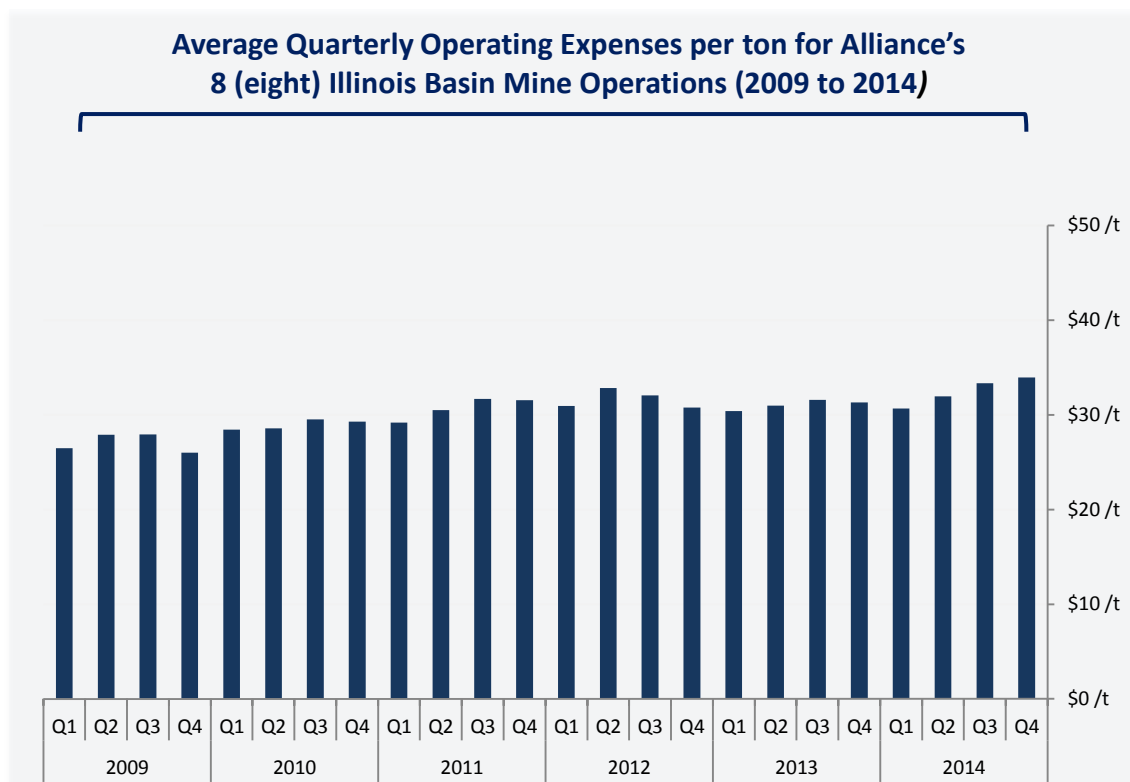


The WK No.9 coal seam is the second largest producer of coal in the US (by coal seam)

Comparable Low Operating Costs

Paringa's "all-in" operating costs (inclusive of severance taxes and royalties) are in line with the operating costs of Alliance Resource Partners, LP's ("Alliance") newly developed Illinois Basin operations

Operating Costs (FOB Barge)	US\$ per ton
Labour and Benefits	7.71
Operating & Maintenance	9.40
Power & Utilities	0.97
General & Administration	0.78
Leased Equipment	1.84
Sub-total Direct Mining Costs	20.70
CHPP & Barge Load-Out Facility	3.51
Taxes & Insurance	1.29
Royalties	2.37
Severance Taxes	2.32
Average Annual Operating Costs	30.19



Source: Company Filings

Note: Average Quarterly Operating Expenses per ton calculated as Sales less EBITDA.

Low Capital Costs Based on Firm Tender Process

Located in one best-served and infrastructure-advantaged coal regions in the US underpinning the Project's low capital cost development with all major capital items in the PFS costed on the basis of a firm tender submission process

Buck Creek No.1 Mine Site Layout

Initial Capital Costs	US\$ million
Mine Development Costs	12.2
Slope (ie Decline) and Shafts	54.2
Surface Facilities & Infrastructure	13.3
Sub-total Mine Development	79.7
Coal Preparation Plant	33.9
Refuse Disposal Site	1.0
Overland Conveyor	8.0
Barge Load-Out Facility	4.7
Sub-total CHPP & Load-Out	47.6
Total Initial Capital Cost	127.3



Capital intensity of Buck Creek No.1 Mine of US\$49 per ton above the average capital intensity of US\$43 per ton of recent mine developments in the Illinois Basin

Growing, High Quality Reserve Base

Paringa has secured a very large undeveloped position (+33,500 acres) in the Illinois Basin and is continuing to acquire leases to substantially increase the high energy, high quality and lower chlorine resource base

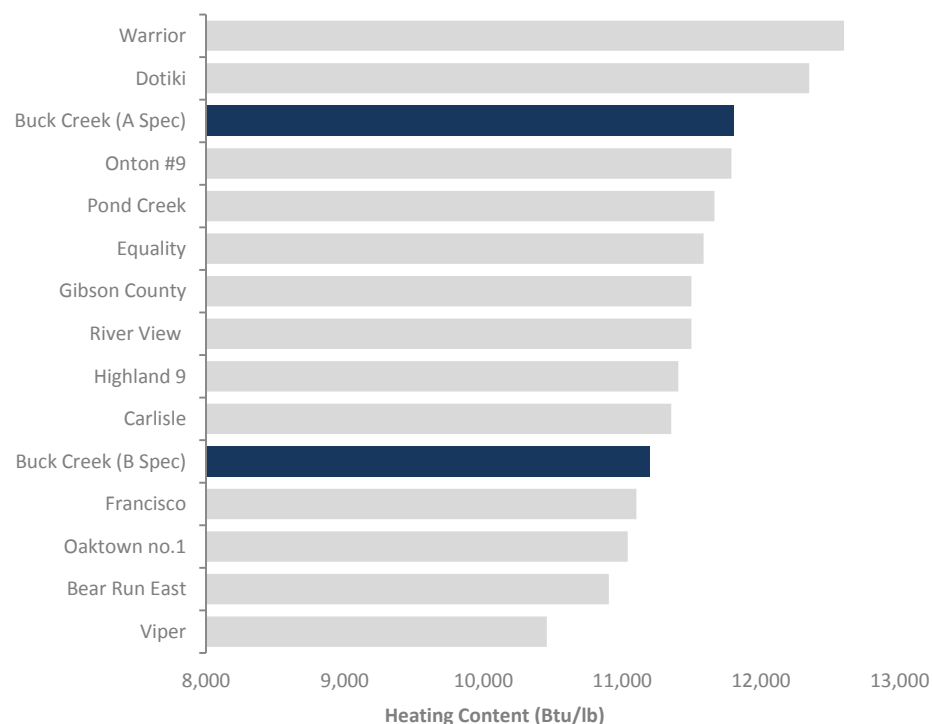
JORC Coal Resource & Reserve Estimate¹ (million tons)

Measured Resources	57.7
Indicated Resources	153.5
Total Measured & Indicated Resources	211.2
Total Recoverable Coal Reserves	85.2
Proven Marketable Coal Reserves	16.4
Probable Marketable Coal Reserves	46.3
Total Marketable Coal Reserves	62.6

Product Quality

Product A – Fully Washed	11,800 Btu/lb
Product B – Blended (12% Ash)	11,200 Btu/lb

Buck Creek Coal Quality Comparison² (Heating Content Btu/lb)

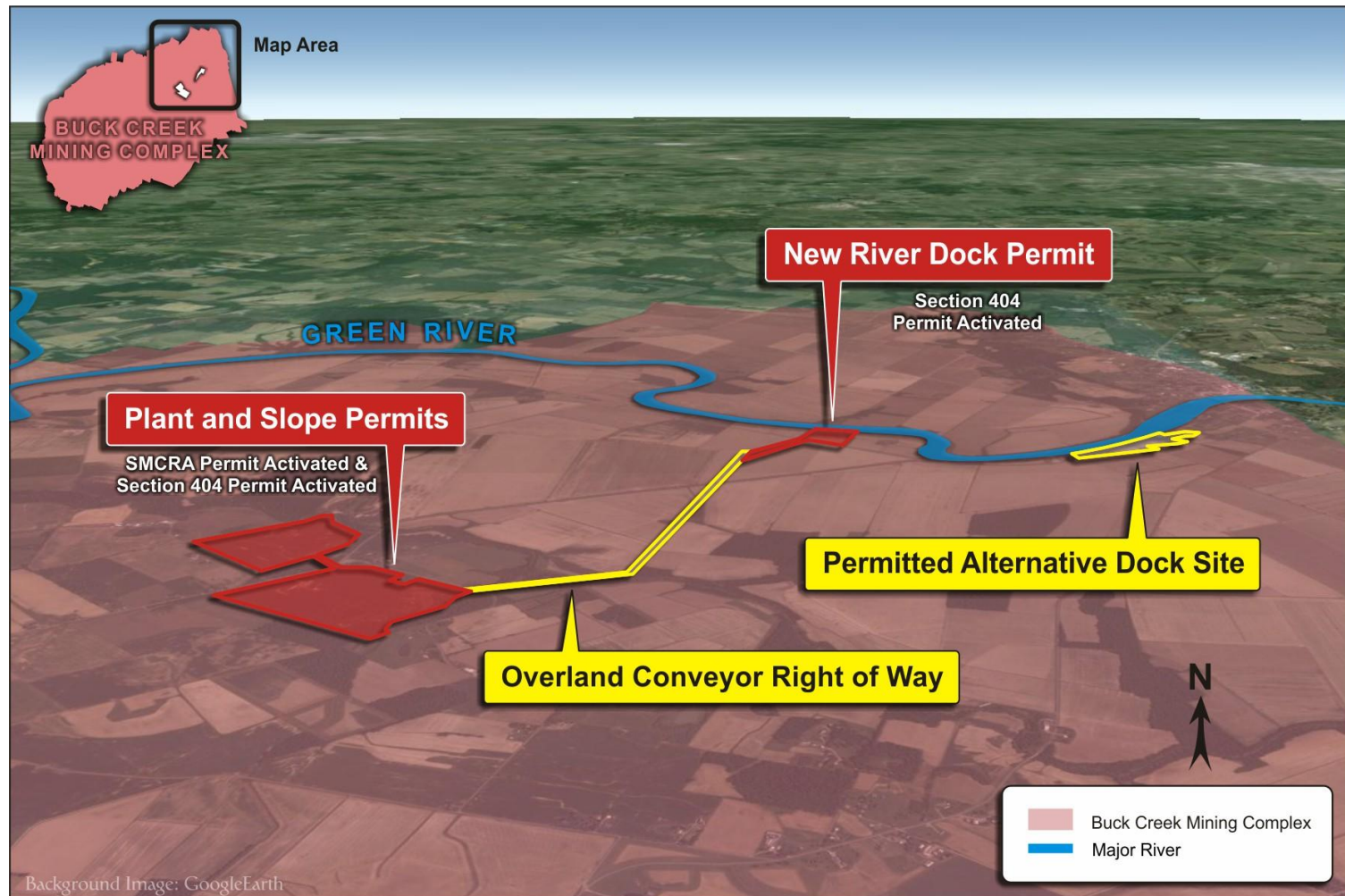


One of the most important characteristics to be considered in the Illinois Basin is the chlorine content (corrosive effect on boilers). The Buck Creek Project's chlorine content (raw) is a relatively low 0.18% and thus has a significant advantage over many other new developments in the Illinois Basin which typically have values exceeding 0.3%.

Notes
 (1) 186 bore holes were used in the calculation
 (2) Source: Hanou Energy Consulting, LLC

Key Environmental Permits Completed

Paringa holds the key SMCRA permit and US Army Corps of Engineers Section 404 permit, required to construct and operate the Buck Creek No.1 Mine and is also permitting a preferred river dock location which should be completed by June 2016



Experienced Executive Team

An Executive team with large cap coal mining experience in the USA, including the Illinois Basin, which will continue to strengthen with high calibre appointments

David Gay
CEO

- Mining Engineer with over 30 years of experience in developing coal resources projects covering the entire coal development chain
- Business Unit President at Pittston Coal Group (20 years experience)
- Vice President Mergers and Acquisitions and Business Development at Alpha Natural Resources, one of the USA's largest coal producers

Jim Plaisted
VP Coal Sales and
Marketing

- Former General Manager of Alliance Coal, LLC, subsidiary of Alliance Resource Partners, LP and was responsible for the marketing of coal from all seven of Alliance's Illinois Basin mining operations
- Instrumental in building Alliance up to a 39Mtpa coal producer which included the development of four "greenfield" coal projects

Matt Haaga
COO

- Mining Engineer with over 35 years of experience in developing coal resources throughout the USA
- Business Unit President and Vice President Engineering and Land at Peabody Energy (27 years experience), the world's largest private sector coal company

Rick Kim
General Manager

- Mining Engineer with over 13 years' experience working in the US coal industry managing continuous miner coal operations for Arch Coal and other major US coal producers
- MBA from the University of Pittsburgh and Bachelor of Mining Engineering

Mike Curry
Manager

- Mining Engineer with Consol Energy and Alpha Natural Resources' Mergers and Acquisitions team
- Bachelor of Science from West Virginia University

Daniel Trentham
Accounting

- Senior Accountant with Alliance Resource Partners, LP
- Bachelor of Accounting from Oakland City University

Nathan Ainsworth
Business Development

- Over 13 years experience in Investment Banking and Investment Advisory specialising in the resources industry across North America, Europe, Middle East and Asia
- CFA Charterholder and member of Institute of Chartered Accountants

Quality Board

A high quality Board with coal mining experience covering the entire coal development cycle, including exploration, development, financing and production

Ian Middlemas
Chairman

- Highly respected resource executive with extensive finance, commercial and capital markets experience
- Current Chairman of Prairie Mining Ltd and Berkeley Resources Limited & former Chairman of Papillon Resources Ltd, Coalspur Mines Limited and Mantra Resources Limited

Todd Hannigan
Director

- Formerly the CEO of Aston Resources Ltd and was instrumental in developing the company into one of the largest publicly listed coal companies in Australia before merging with Whitehaven Resources Limited in a deal valued at over \$5 billion
- Graduate of the University of Queensland, holds a Bachelor of Engineering (Mining) with Honours, holds a Queensland first class mine manager's certificate and has a MBA from INSEAD

Tom Todd
Alternate Director

- Chief Financial Officer of Aston Resources from 2009 to November 2011 and prior to this role, was Chief Financial Officer of Custom Mining, where his experience included project acquisition and funding of project development for the Middlemount project to the sale of the company to Macarthur Coal
- Graduate of Imperial College, Mr Todd holds a Bachelor of Physics with first class Honours. He is a member of The Institute of Chartered Accountants in England and Wales and a graduate of the Australian Institute of Company Directors.

Taso Arima
Executive Director

- Resource company executive with experience in development and funding of resource companies
- Founder & former Executive Director of Coalspur Mines Ltd having been instrumental in developing Coalspur from a A\$3 million market capitalisation to a A\$1.2 billion market capitalisation company upon his departure

David Chapman
Director

- 30 years resource industry experience as a geologist in senior and executive management roles with WMC Resources Ltd and the junior sector within Australia and overseas, covering operations, exploration project management and construction, business development and project financing

David Griffiths
Director

- 35 years resource industry experience with senior roles at WMC and Worsley Alumina, prior to establishing communications consultancy in Perth
- Co-founder and Non-Executive Director of Silver Lake Resources Limited

Capital Structure

Paringa's success in developing a world-class project is not reflected in the company's share price, presenting an excellent entry point for investors

Capital Structure	
Current Shares on Issue	138,816,667
Directors and Management	35.6%
Silver Lake Resources Ltd	15.0%
Others	49.4%
Options (exercise price ranging from 20 cents to 45 cents)	5,400,000
Performance Share Rights	5,796,667
Market Capitalisation (at 16 Mar 15)	A\$34.7 million
Cash (31 Dec 14)	~A\$6.5 million
Enterprise Value	A\$28.2 million

Share Price (since 31 Jul 13)



....Next 12 Months

- | | | |
|---|--|--|
| ✓ | Results of Pre-Feasibility at Buck Creek No.1 Mine | Completed |
| ✓ | Continue aggressive leasing activities focusing on western half of Buck Creek Mining Complex | Ongoing |
| ✓ | Results of development drilling at Buck Creek No.2 Mine | 2nd Quarter 2015 |
| ✓ | Commence Bankable Feasibility Study at Buck Creek No.1 Mine | 2nd Quarter 2015 |
| ✓ | Execute forwards sales coal contracts with local utilities | 2nd to 3rd Quarter 2015 |
| ✓ | Results of Technical Study at Buck Creek No.2 Mine | 1st Half 2015 |
| ✓ | Commence discussions with potential financiers to construct the Buck Creek No.1 Mine | 2nd Half 2015 |
| ✓ | Results of Bankable Feasibility Study at Buck Creek No.1 Mine | 2nd Half 2015 |
| ✓ | Commence construction of Buck Creek No.1 Mine | 1st Quarter 2016 |

Cautionary Statements and Important Information

This presentation does not constitute or form part of any offer to sell, or solicitation of any offer to buy, any securities in the United States or any other country. This presentation may not form the basis of any contract or commitment whatsoever with any person. Distribution of this presentation may be restricted by applicable law. In particular, only persons in the United States who are “qualified institutional buyers” (as defined in Rule 144A under the US Securities Act of 1933) may receive this presentation.

This presentation has been prepared by Paringa Resources Limited (“Paringa”) as a summary only, and does not contain all information about Paringa’s assets and liabilities, financial position and performance, profits and losses, prospects, and the rights and liabilities attaching to Paringa’s securities. Any investment in Paringa should be considered speculative and there is no guarantee that they will make a return on capital invested, that dividends would be paid, or that there will be an increase in the value of the investment in the future.

Paringa does not purport to give financial or investment advice. No account has been taken of the objectives, financial situation or needs of any recipient of this presentation. Recipients of this presentation should carefully consider whether the securities issued by Paringa are an appropriate investment for them in light of their personal circumstances, including their financial and taxation position.

Forward Looking Statements

Some of the statements contained in this presentation are forward looking statements. Forward looking statements include but are not limited to, statements concerning plans for its mineral projects, exploration and development activities, development plans and timing, development and operating costs, and other statements which are not historical facts. When used in this presentation, and in other published information of Paringa, the words such as “aim”, “could”, “estimate”, “expect”, “intend”, “may”, “potential”, “should” and similar expressions are forward-looking statements.

Although Paringa believes that its expectations reflected in the forward-looking statements are reasonable, such statements involve risk and uncertainties and no assurance can be given that actual results will be consistent with these forward-looking statements. Various factors could cause actual results to differ from these forward looking statements include the potential that Paringa’s projects may experience technical, geological, metallurgical and mechanical problems, changes in mineral product prices and other risks not anticipated by Paringa.

Competent Persons Statements

The information in this presentation that relates to the Exploration Results, Coal Resources, Coal Reserves, Mining, Coal Preparation, Infrastructure, Production Targets and Cost Estimation was extracted from Paringa’s ASX announcements dated 17 March 2015 entitled ‘Paringa Delivers Exceptional Pre-Feasibility Study at the Buck Creek No.1 Mine’ and 25 February 2015 entitled ‘Substantial 54% Increase in Measured and Indicated Coal Resources to 211 Million Tons’ which are available to view on the Company’s website at www.paringaresources.com.au.

The information in the original ASX announcements that related to Exploration Results and Coal Resources is based on, and fairly represents, information compiled or reviewed by Mr. Kirt W. Suehs, a Competent Person who is a Member of The American Institute of Professional Geologists. Mr. Suehs is employed by Cardno. Mr. Suehs has sufficient experience that is relevant to the style of mineralization and type of deposit under consideration and to the activity being undertaken to qualify as a Competent Person as defined in the 2012 Edition of the ‘Australasian Code for Reporting of Exploration Results, Mineral Resources and Ore Reserves’ and to qualify as a Qualified Person as defined in the 2011 Edition of the National Instrument 43-101 and Canadian Institute of Mining’s Definition Standards on Mineral Reserves and Mineral Resources.

The information in this report that relates to Coal Reserves, Mining, Coal Preparation, Infrastructure, Production Targets and Cost Estimation is based on, and fairly represents, information compiled or reviewed by Messrs. Justin S. Douthat and Gerard J. Enigk, both of whom are Competent Persons and are Registered Members of the Society for Mining, Metallurgy & Exploration. Messrs. Douthat and Enigk are employed by Cardno. Messrs. Douthat, and Enigk have sufficient experience that is relevant to the style of mineralization and type of deposit under consideration and to the activity being undertaken to qualify as Competent Persons as defined in the 2012 Edition of the ‘Australasian Code for Reporting of Exploration Results, Mineral Resources and Ore Reserves’ and to qualify as Qualified Persons as defined in the 2011 Edition of the National Instrument 43-101 and Canadian Institute of Mining’s Definition Standards on Mineral Reserves and Mineral Resources.

Paringa confirms that: a) it is not aware of any new information or data that materially affects the information included in the original ASX announcements; b) all material assumptions and technical parameters underpinning the Coal Resource, Coal Reserve, Production Target, and related forecast financial information derived from the Production Target included in the original ASX announcements continue to apply and have not materially changed; and c) the form and context in which the relevant Competent Persons’ findings are presented in this presentation have not been materially modified from the original ASX announcements.



PARINGA RESOURCES LIMITED
www.paringaresources.com

David Gray
CEO & President
T: +1 812 406 4402
M: +1 276 791 0677
E: dgray@hartshornemining.com

Nathan Ainsworth, CFA
Business Development
M: +1 347 930 9246
E: nainsworth@paringaresources.com