



ASX RELEASE

ABN: 45 116 153 514

3 March 2020

ASX: TMX

Exciting Results from Smokebush Gold Project

Terrain Minerals Limited (ASX: TMX) is very pleased with the findings from the recent site visit to the Smokebush Project. The observations and results from sampling activities over the tenement package has confirmed that the area as highly prospective for gold exploration.

In January 2020 Terrain's geologists conducted an eight-day site visit, to gain a firsthand understanding of the local geology and any possible logistical challenges that may be encountered during the set up for a first stage drill program. The other key reason for the site visit was to validate historic data, including drill collar locations.

The Terrain geological team has successfully highlighted three high priority drill targets, along with two other areas that warrant further work and drill testing. The team also uncovered extensive historic underground mine working at the Monza Target (refer to pictures 2 & 3).

Terrain has commenced the planning for an RC and aircore drill program at the Smokebush gold project to test these high priority target areas.

The best rock chip samples over the priority targets include (refer to Diagram 1):

Monza: 3.1 g/t Au, & 0.61g/t Au & 0.37g/t Au

Target 13: 11.1g/t Au with 0.27% Pb and, 17.2 g/t Au with 2.3% Pb

Wildflower: 1.2 g/t Au

Other areas of interest include Targets T16 & T16W, which are both located in the southern area of the tenement package that also show potential, but further work is required prior to being ready for drill testing.

All the relevant approvals are underway. The northern area of the tenement package which host the Monza and T13 targets require a comprehensive flora and fauna study in order to gain Program of Works (POW) approval.

The Board of Terrain is very excited about the findings from the field trip and the potential of the planned drilling campaign.

Refer to ASX release:

02 December 2018 - Farm-in Agreement for the Smokebush Gold Project at Mt Mulgine, 65km West of Paynes Find WA.

18 December 2019 - Smokebush Exceptional Historic Drilling Results Identified During Project Due Diligence

| Terrain Minerals Limited | ASX:TMX | ABN 45 116 153 514 |

| Registered Office: S2, 28 Outram Street, West Perth, WA, 6005 |

| Mail: PO BOX 79, West Perth, WA, 6872 | Ph: +61 8 9381 5558 | www.terrainminerals.com.au |

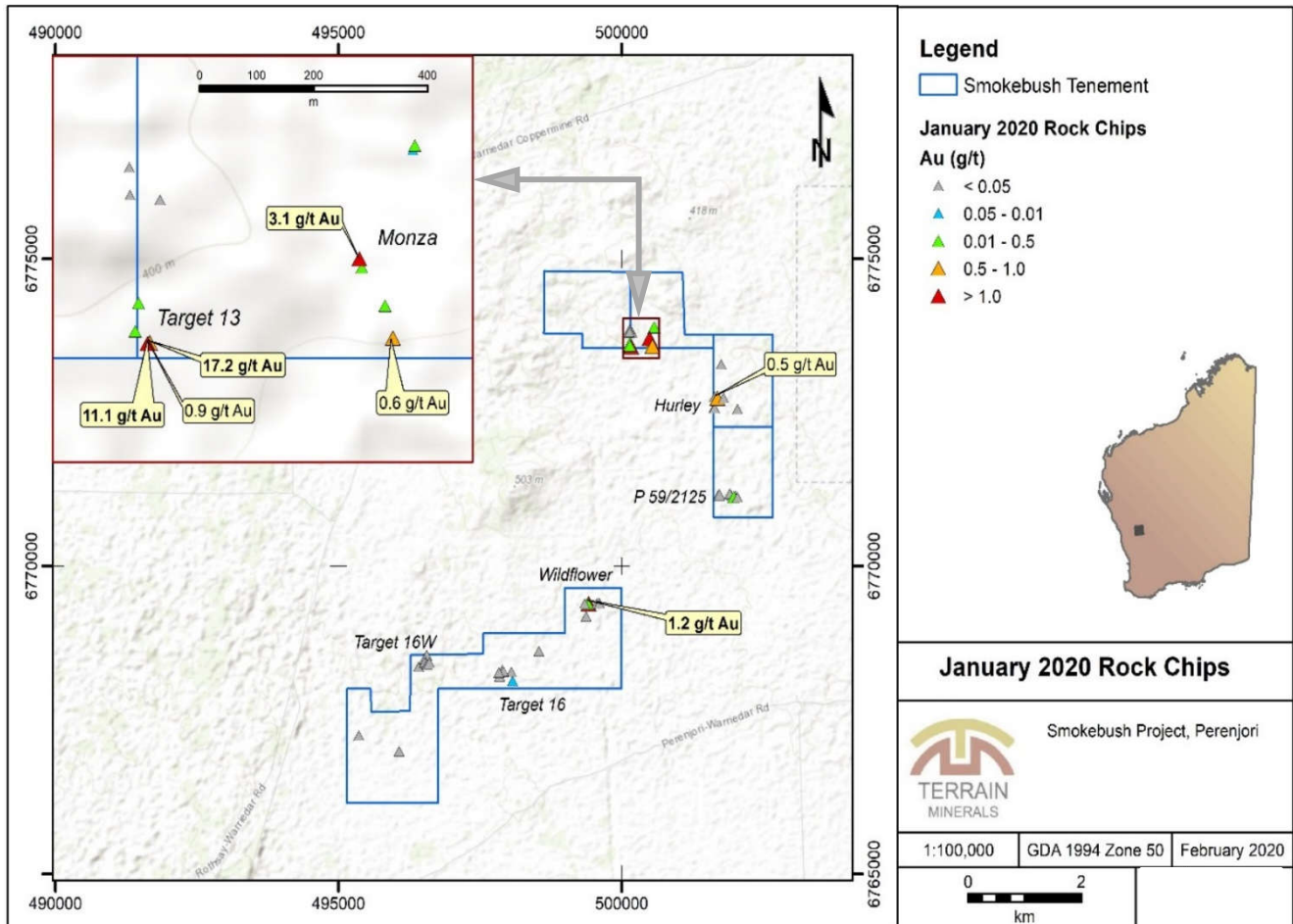


Diagram 1: Sample Locations & Results from January 2020 Site Visit

Location & Access

The Smokebush Project Area is located approximately 85 kilometres east northeast of the Perenjori township and 65 kilometres west of Paynes Find within the Yalgoo Mineral Field.

The project is contained within four contiguous Prospecting Licences (P59/2125, P59/2126, P59/2127 & P59/2128) and one Exploration Licence (E59/2234) enclosing a total area of approximately ~1,254 hectares (Figure 1).

The tenements can be accessed via the unsealed Perenjori - Warriedar Road, and thence via extensive historical exploration grid lines, station tracks and fences lines.

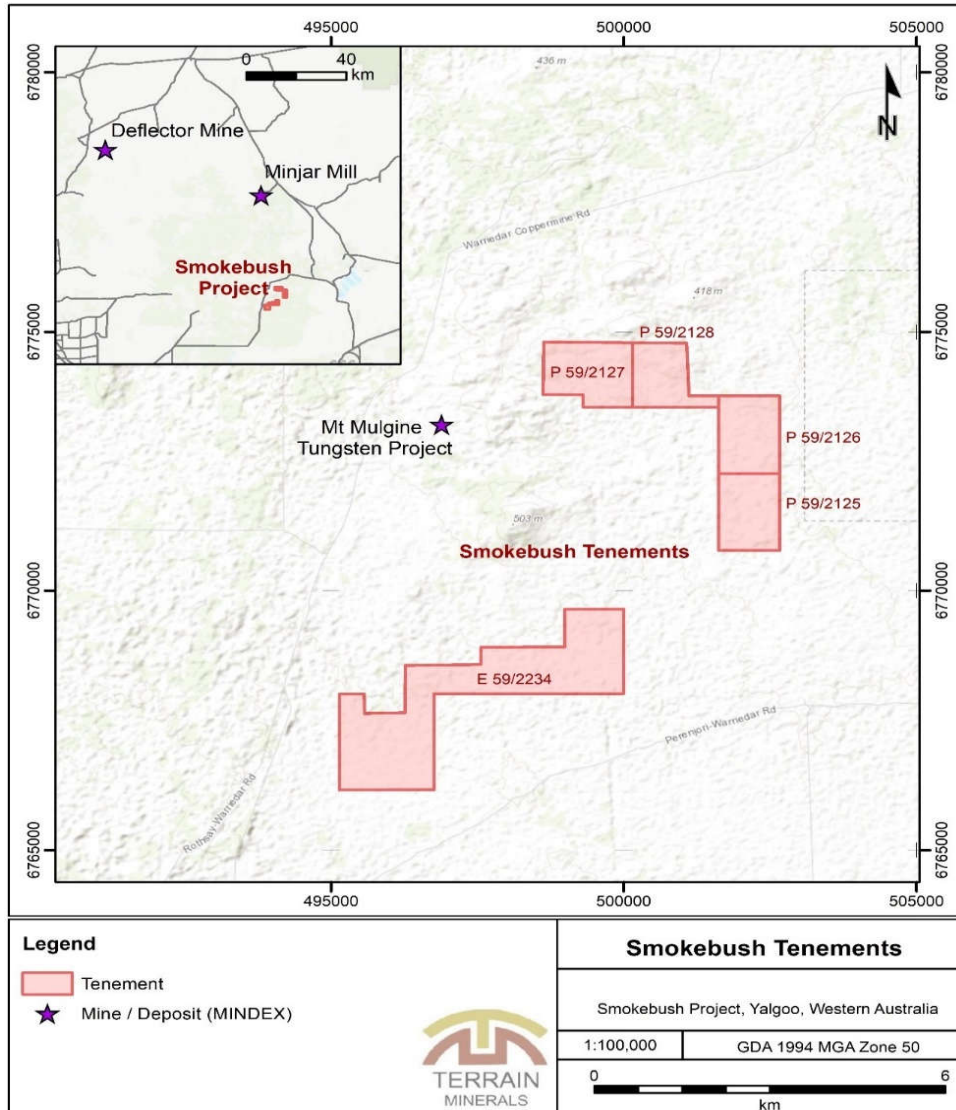


Diagram 2: SmokeBush Project Location (Tenements outlines in Red)

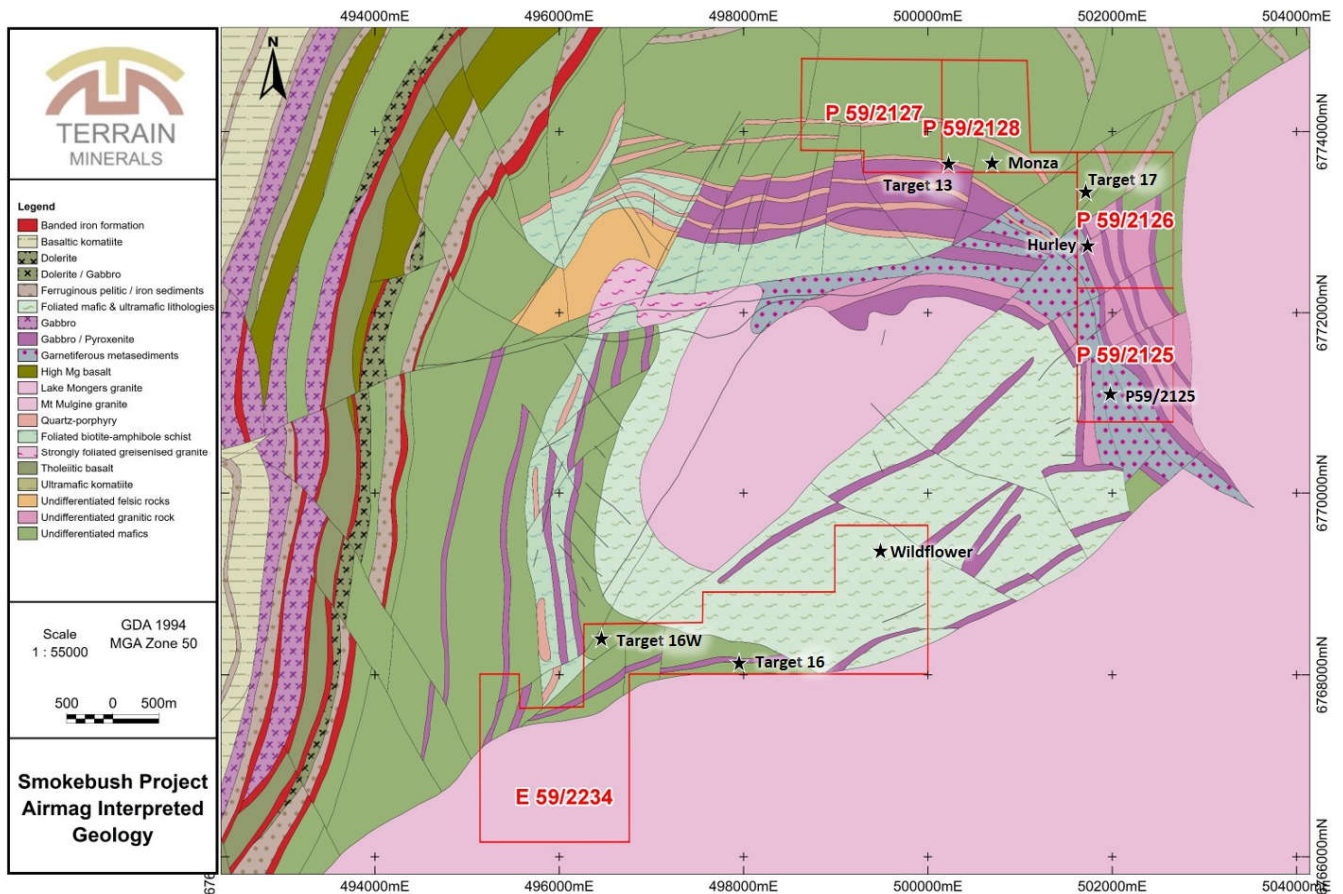


Diagram 3: Interpreted Geology Mt Mulgine with the Smokebush tenements in red outlines

Monza & Target 13 Targets (Priority Targets)

The Monza and Target 13 targets occur within two distinct gold soil geochemical anomalies >19 ppb in the southwestern corner of P59/2128. Combined these two soil anomalies cover an area of 500 x 500 m. There are a number of >2 g/t Au rock chips that form a "bulls eye" within the geochemical anomaly (peaking at 10.37g/t Au). The soil anomalies have had 11 angled RC drill holes completed (drilled towards the west and Southwest). It is believed that this drilling may not have effectively tested these geochemical anomalies.

Monza - Field observations and rock chip sampling completed during the January field trip confirmed the historic geochemical mineralisation and prospective geology. Observations of historic drill data suggest that the mineralisation intersected in historic drilling (2m @ 11.3g/t Au from 70m in hole MMRC162) plunges to the north and the follow up drilling to the north of this mineralisation may have drilled over the top of the mineralised shoot. The planned drilling will be designed to test the northerly down plunge extension to this mineralisation. A number of anomalous gold assays were returned from the six rock chip samples collected at Monza (3.1g/t Au, 0.61g/t Au & 0.37g/t Au).

Target13 - As a result of modelling the mineralisation completed on Monza (300m to the east) and after review of the RC drilling completed to date on the T13 target, it is believed that the drilling may not have adequately tested a parallel northern plunging interpretation to this mineralisation or explain historic rock chips of 10.4g/t



Au, 15.8g/t Au) that have been collected on the T13 target area. There is a possibility of mineralised recurrences running to the north of both Monza and T13 will be investigated in future site visits.

The historic data at the Monza target has identified that the narrow high grade plunging mineralised zones could be open to the north under the existing drilling. Significant intercepts include 2m @ 11.3g/t Au from 70m in hole MMRC162 and 2m @ 9.2g/t Au from 24m in hole MMRC154 (Previously reported in ASX announcement dated 18th of December 2019). Further RC drilling is required to confirm geometry of this high-grade plunging zone and test the potential down plunge potential to the north.

A total of eight rock chip samples were collected to verify the very high-grade nature of the historic rock chip sampling. Anomalous rock chips from the Terrain sampling comprise a 17.2g/t Au, 11.1g/t Au and a 0.9g/t Au.

Target 13 - Field Observations

Target 13 sits on the southern downslope of a steep hill. The rehabilitated tracks from the historic drilling are accessible, but noted as extremely rocky.

The previous drilling was easily identified, and angled to the west, subparallel to the interpreted stratigraphy, suggesting a north-trending structure. Several small prospector pits were found between the lines of the historic drill holes, and the structure was seen to be outcropping, subcropping in several places on top of the hill, and on the northern downslope of the hill.

The structure, hosted in dolerite, comprises thick (5 cm) quartz veining with gossan and siliceous alteration to the surrounding dolerite (Picture 1). The altered dolerite is light green on fresh surfaces and subcrops as lines of small boulders. The quartz veining thickens toward the south to 20-30 cm, however there is little or no outcrop on the southern downslope of the hill.

Historic rock chips from the workings at the southern base of the hill returned significant anomalous gold results, up to 15.8 g/t Au. Five rock chip samples (including three in the workings) were taken along the structure, two of them to the northwest to potentially extend the mineralisation on the structure.

Monza - Field Observations

The Monza target is located on the same downslope as Target 13, though the incline is slightly shallower in this area. The historic drill holes were once again easily identified by the rehabilitated drilling pads. The historic sumps highlighted fresh boulders of dolerite, as at Target 13. Though outcrop is not abundant at Monza, the surficial cover is shallow and there is dense cobble scree and boulders.

Monza targets a similar northwest-trending structure as at Target 13. The historic workings found at the site were more significant than those seen at Target 13, with two constructed shafts of undetermined depth (Pictures 2 & 3), and several larger prospecting holes. These substantial workings are located south of the recent drilling on the Terrain tenement.

Outcrop of the mineralised structure is minimal, though evidence of shearing and vein infill with white clays and quartz was visible in boulders from the infilled sumps. Just north of the recent drilling are two small prospector holes near outcropping sheared granite, which suggest a continuation of the structure at this location. The sheared granite (low outcrops of highly foliated, quartz and white-mica schist with minor chlorite) continues for 50 m

| Terrain Minerals Limited | ASX:TMX | ABN 45 116 153 514 |

| Registered Office: S2, 28 Outram Street, West Perth, WA, 6005 |

| Mail: PO BOX 79, West Perth, WA, 6872 | Ph: +61 8 9381 5558 | www.terrainminerals.com.au |



along strike of the structure to the northwest (Picture 4). No further outcrops indicating shearing or structural deformation were located further to the northwest.

To the northeast of the drilled area, historic rock chips returned slightly anomalous gold results (0.4 g/t Au). Upon inspection at the site, the location hosts an outcrop of highly gossanous BIF in the bank of a creek. The orientation of the outcrop and measurable structures do not correspond to orientations which would suggest a parallel structure to the mineralised targets Monza and Target 13, however the unit could not be immediately traced along strike due to lack of subcrop.

Six rock chips were taken at Monza. One from the dumps of the historic workings, two from the sheared granite north of the drill holes (one of those from a prospector hole), one sample from sheared dolerite material in the sump infill, and two from the gossanous BIF to the northwest of the drilling.

Though the historic rock chips did not return as high anomalous gold as at Target 13, the area is still highly prospective as indicated by the deep workings and the anomalous returns from the drilling.



Picture 1: Quartz veining in silicified dolerite at Target 13



Picture 2: Historic shafts at Monza



Picture 3: Further Historic workings at Monza



Picture 4: Sheared mafic lithologies from sump infill at Monza

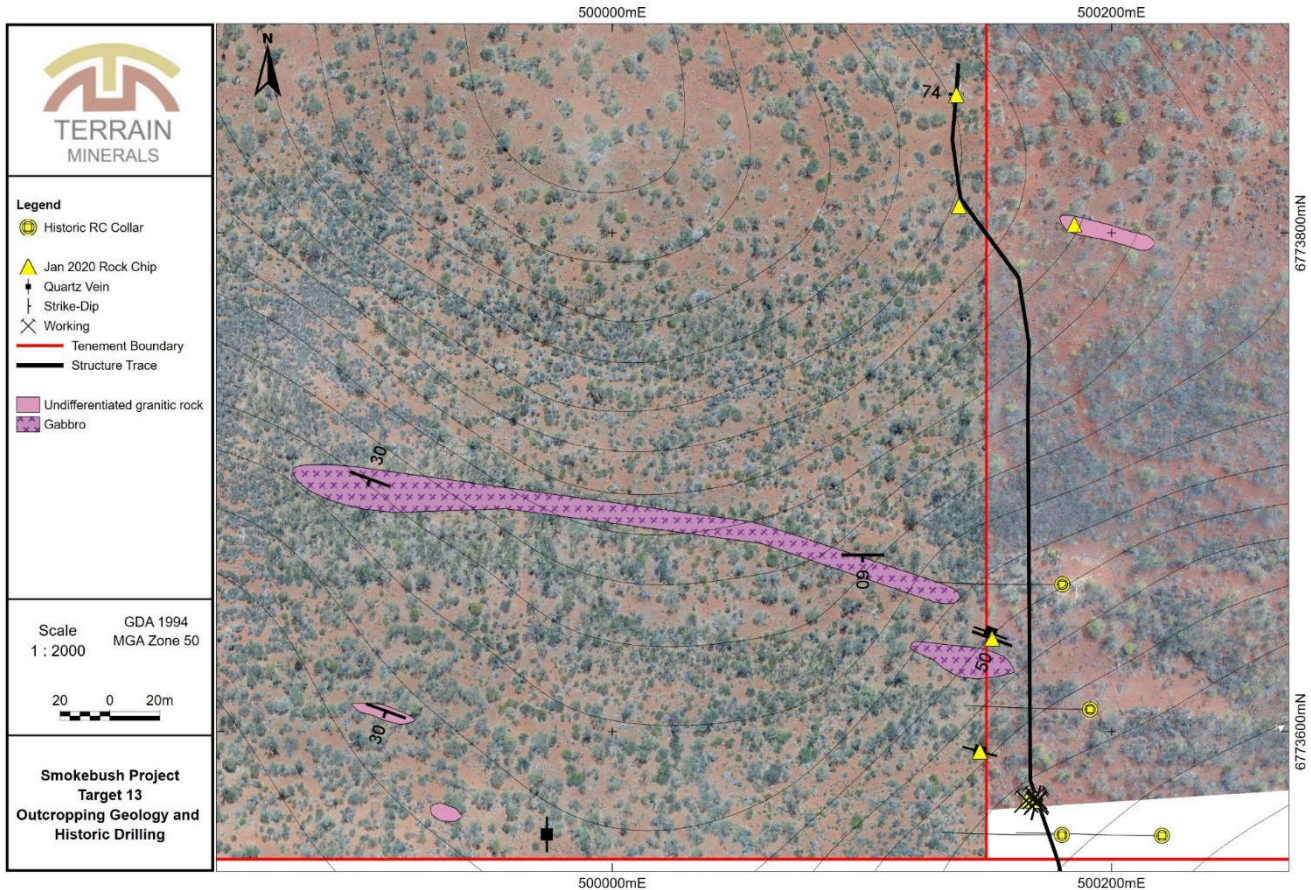


Diagram 4: Outcropping geology and January 2020 rock chips at the Monza prospect

Wildflower Target (Priority Target)

Wildflower comprises a 1.0 km x 500 m gold in soil anomaly (>19ppb Au) located in the north-eastern part of E45/2234 (Diagram 5). The target has had limited drilling completed to date with 35 RAB holes (mostly less than 5m depth) and one angled RC hole (drilled towards the west) completed. Significant results (>0.5g/t Au) include 5m @ 1.0g/t from 100m in hole MMRC001 and 15m @ 1.49g/t from 10 m in hole MM110. Those results were collected with five metre composite samples.

The current level of drilling was completed on 270m line spacing, which is considered to be wide spaced and has not adequately tested the widespread gold anomaly (peaking at 226 ppb Au). Given that the above-mentioned gold anomalism intersected in the limited drilling is open at depth and along strike further drilling is required to delineate the extents to this gold mineralisation.



Wildflower - Field Observations

The Wildflower target comprises a broad NE-trending surface sample anomaly over which there has been shallow RAB drilling, one line of deeper (50 m) RAB drilling, and a single RC hole. The surface anomaly covers the range of an east-trending hill whose spine is traversed by an historic RAB line. The single RC hole is also on the line which runs the crest of the hill.

The surface anomalies surrounding the hill correspond to areas with significant scree from the foliated mafic volcanics which subcrop intermittently in higher ground. There are also abundant small (<1 m) quartz and granite veins, as was seen in other areas of the project (specifically Target 16). The veins can be fine grained with oxidation staining to coarse grained with fresh blue-grey quartz and coarse graphic textures.

The structure which was being drilled tested outcrops to the west of the RC hole. Dolerite (variably foliated) is seen to have veins of an opaque white material, which ranges from hard and cherty to soft and dull. The outcrops are very low-lying, flat on the ground, and were identified based on the presence and scree from the white material, in situ or locally dispersed (Pictures 5 & 6).

Chips from the historic RC hole reveal similar vein structures at depth to that seen at the surface, with dolerite intruded by soft white fine-grained vein material (Picture 7). The results of the recent rock chips could determine whether this material is the source of the mineralisation expressed in the Wildflower surface anomaly, and the intersections in the historic drilling.

Further small zones (<5 m) of soft white scree can be found throughout the area, including along strike of the interpreted structures (strike roughly 045). These scree zones often have abundant animal diggings in the soft material, and no clear outcrop or subcrop. This effect could be due to a soil horizon unrelated to the structures; however, this would need to be tested with digging or shallow drilling to determine a relationship to the structural geology.

Based on these observations, it was concluded that historic shallow RAB holes could have been testing for either outcropping of the structural material, or potential mineralisation of the abundant subcropping quartz/granite veins (Diagram 6).

A potentially parallel structure was identified from similar low-lying subcrops to the east of the primary structure. A single zone of soft white scree to the west could suggest another structure, though no other subcrops or scree areas could be identified along strike.

Six rock chip samples were taken at the Wildflower prospect, four of the potentially mineralised vein materials from areas on the two identified structures, one from an outcropping granite-quartz vein, and one of the foliated dolerite.

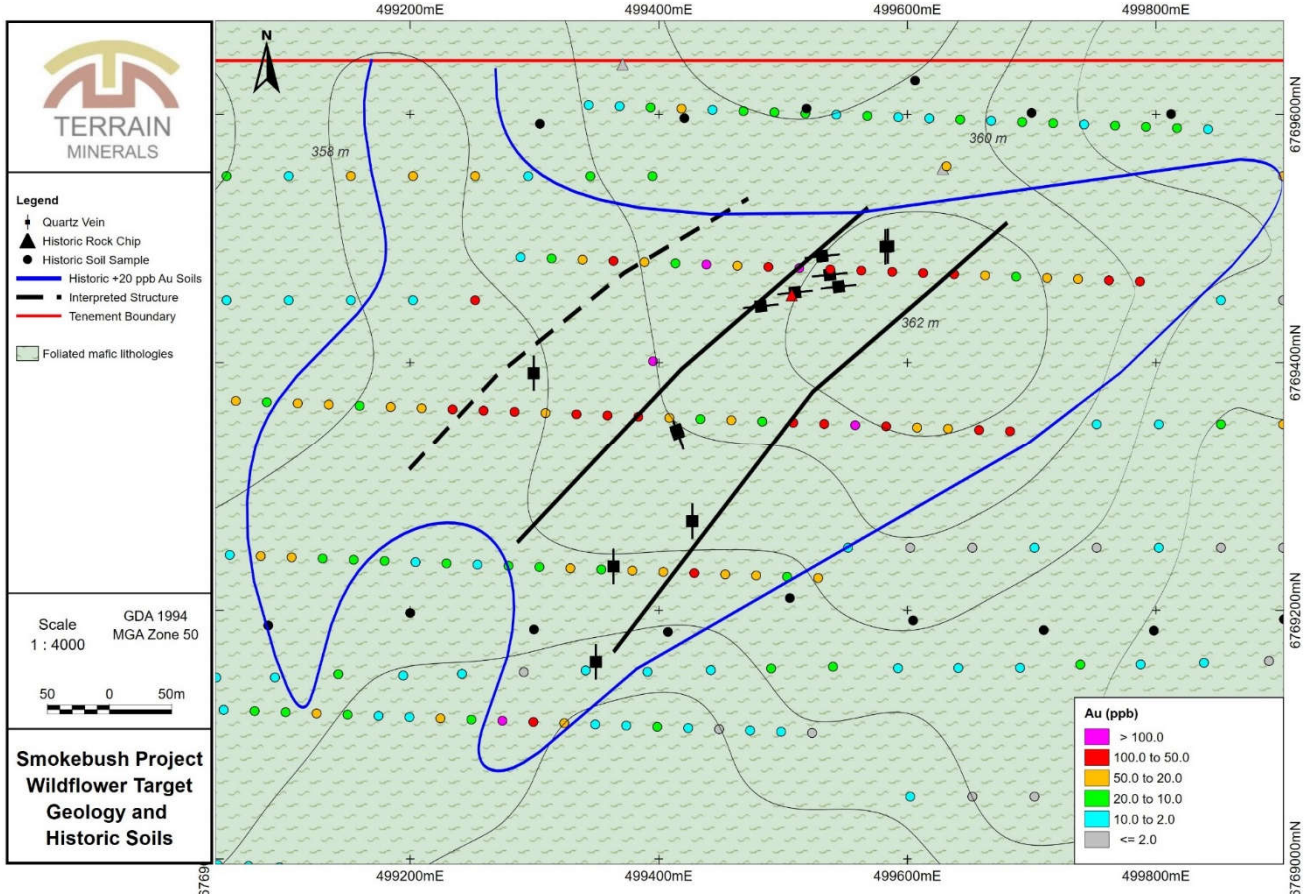


Diagram 5: Historic surface sample anomalism at the Wildflower prospect



Picture 5: Surface expression of white cherty vein material in situ at Wildflower



Picture 6: Subcrop of vein material in potential structure at Wildflower



Picture 7: RC chips at Wildflower with vein material in dolerite

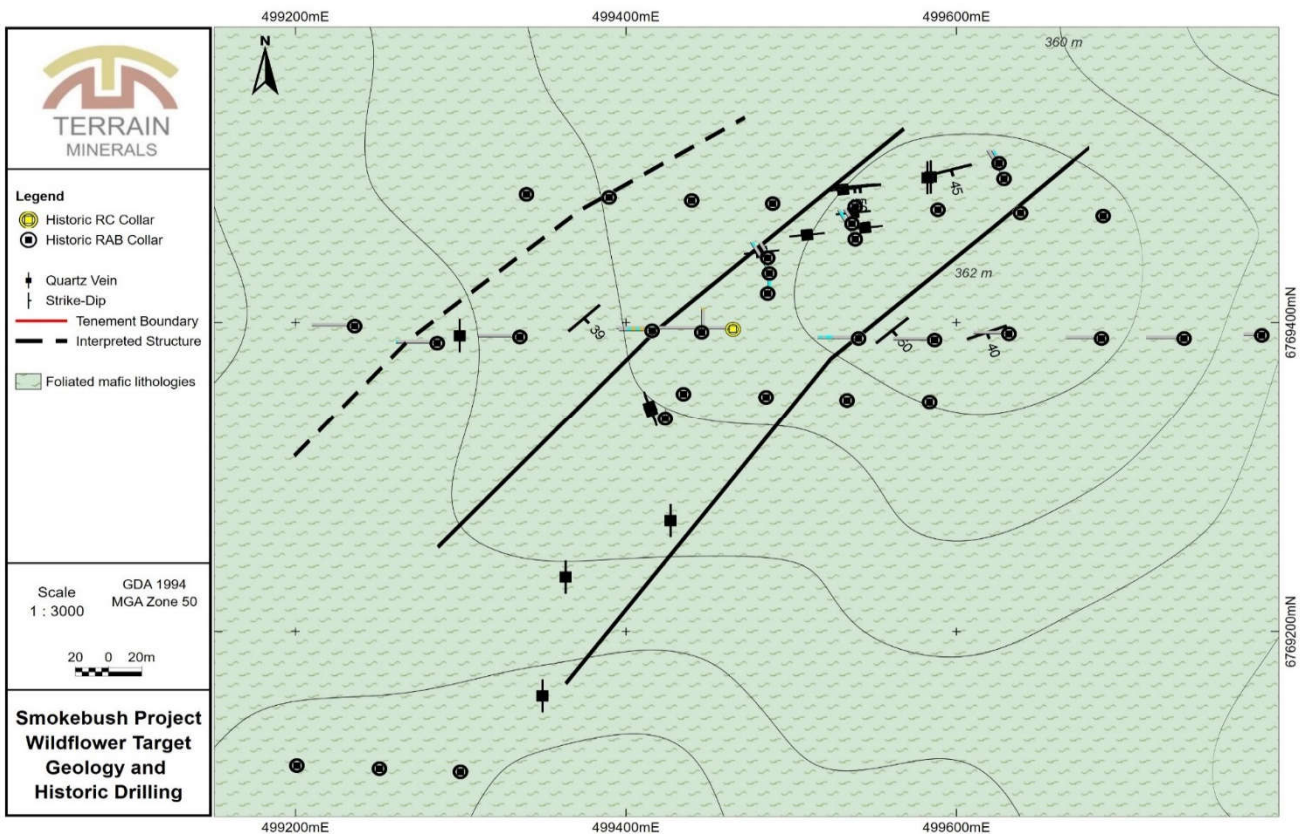


Diagram 6: Historic drilling at the Wildflower Target and recently mapped structures



Target 16 & Target 16W

Low Priority - Further Follow Up Work Required

The T16 target is defined by a 750m x 500m zone of anomalous (>19ppb Au) gold in soil (peaking 280 ppb Au) located in the central part of tenement (E59/2234). T16 has been tested by five angled RC holes (drilled towards the north), four of which have returned significant gold values.

Significant results >0.5g/t Au include 1m @ 1.4g/t Au from 97 m in hole MMRC044 and 2m @ 0.83g/t Au from 86m. At a lower cut-off grade (>0.1g/t Au) the T16 target drilling highlights some wide zones of lower gold anomalism (13m @ 0.39g/t Au from 84m in hole MMRC123 and 16m @ 0.29g/t Au from 94m in hole MMRC044) that suggest that the current drilling may be on the edge of a wider zone of significant mineralisation. Drilling along strike of these wider zones of mineralisation is currently being examined.

Target 16 - Field Observations

Target 16 is a soil anomaly which was drill tested with angled holes toward the north. The generalised mapping of the area describes east-trending sequences of mafics and ultramafics. Ground reconnaissance at the site revealed a relatively small outcropped area in the centre of the historic drilling, with cover over most of the surrounding area. The location of the track through the centre of the outcropped area seems to represent a break or structure, as the geology on either side of the track is drastically different, with outcrops terminating abruptly at the track.

To the east of the track is a large outcrop of pyroxenite which strikes to the northeast and is strongly sheared at the southern end of the outcrop. Two more low-lying ridges of pyroxenite were found to the southeast. The central ridge had a quartz-veined contact with granite on the southern boundary of the pyroxenite. There are several veins of granite and quartz within the pyroxenite in this area. The area to the south and in between the pyroxenite ridges is under cover.

To the west of the track within the outcropped zone are two units of a cobble-boulder conglomerate. The southern unit is a massive, matrix supported, 2 m thick proximal conglomerate with a clast size range of 0.5 cm to 40 cm (average 5 cm). The clasts are almost exclusively bucky milky to grey angular quartz (picture 8). The unit extends 100 m along strike with a continuous thickness and goes undercover to the west and south.

The more northern conglomerate unit has a similar thickness, smaller average clast size (2 cm) and with quartz clasts which appear more weathered and stained orange. This conglomerate unit also incorporates minor gossanous BIF clasts (15 cm) which have retained minor lamination.

Between the two conglomerate units is outcropping metasediments and minor gossanous BIF. To the north and west of the whole outcropped area there is cover with minor subcrop of metasediments. This includes the area of surface anomalism identified from historic soils, which is on a shallow downslope from the outcrops (Diagram 7). Additionally, there are abundant, discontinuous granite/quartz veins (<1 m) and minor gossan and BIF lenses to the north of the outcropped area.

A total of six rock chip samples were collected with no significant results. Further work is required.

| Terrain Minerals Limited | ASX:TMX | ABN 45 116 153 514 |

| Registered Office: S2, 28 Outram Street, West Perth, WA, 6005 |

| Mail: PO BOX 79, West Perth, WA, 6872 | Ph: +61 8 9381 5558 | www.terrainminerals.com.au |

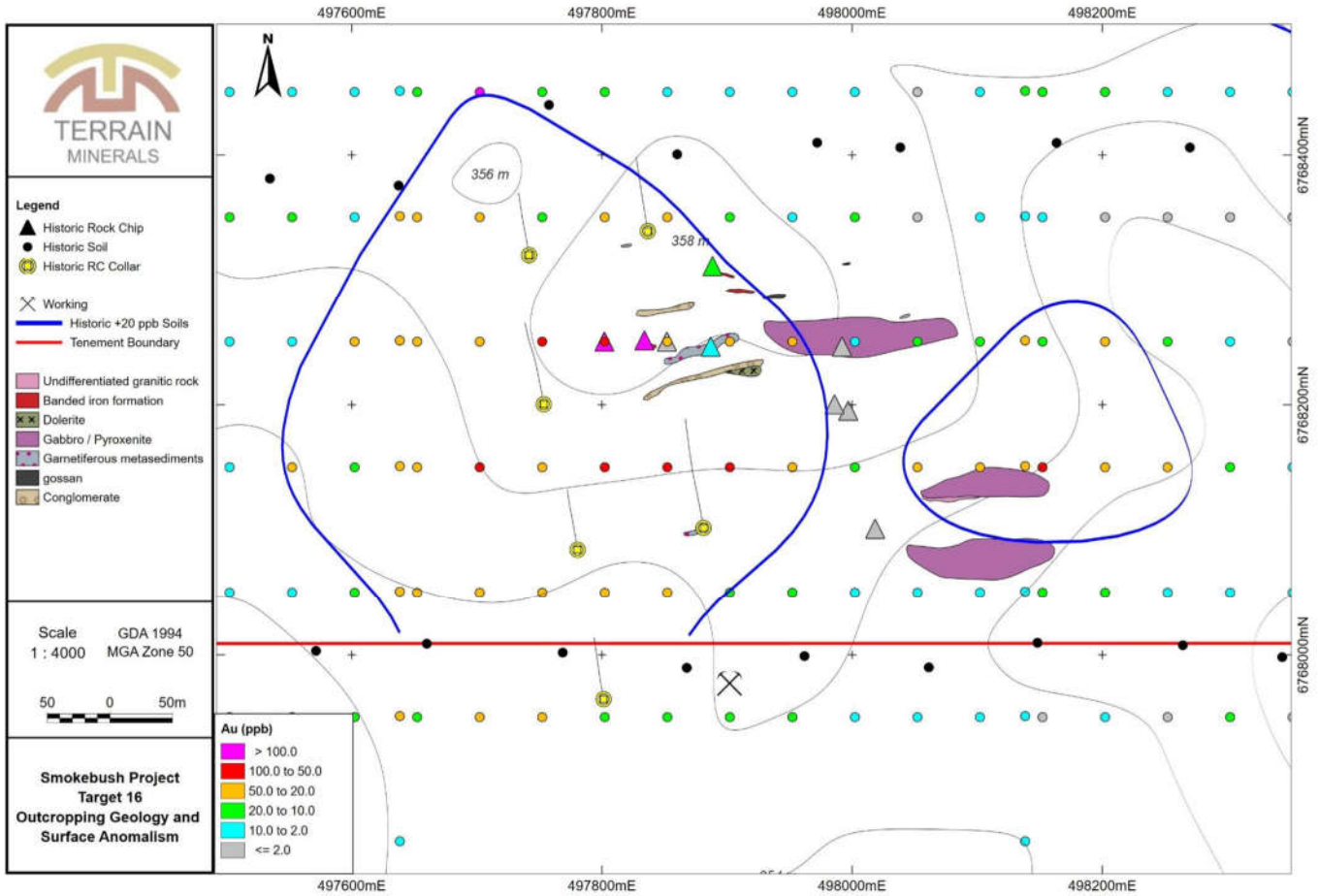


Diagram 7: Historic soil anomalism at Target 16



Picture 8: Conglomerate with quartz cobbles-boulders at Target 16



Target 16W - Field Observations

Target 16W constitutes a large coincident gold-arsenic anomaly west of Target 16. There was no evidence of previous exploration or prospecting activities at the site. However, much like the other targets at the project, the surface anomalism is adjacent and downslope to a large area of outcrop.

The peak and north side of the hill outcrop a strongly foliated and highly weathered metasedimentary schist with hematite alteration. The unit, overall, strikes to the southeast and dips to the south, however local orientations are highly variable due to the strong schistosity.

Throughout the outcropping schist are several lenses of stratigraphy-parallel gossanous BIF and quartz veining. Quartz veins are minor, less than 0.5 m thick and restricted to 2 m length, at most. The gossanous BIF horizons are more extensive (5-50 m long) and are commonly stacked with thin zones of schist in between.

The BIF is highly laminar with minor thin quartz veining parallel to laminations.

At the southeastern edge of the schist outcrop, along the crest of the hill, there is a dense 10-metre zone of ferruginous and nodular laterite scree (as described at Hurley). To the south of the outcropped hill is under cover, with minor lateritic scree.

Historic anomalous rock chips from the area (up to 0.4 g/t Au) are likely from gossanous BIF horizons. Six rock chips were taken at Target 16W, from various gossanous BIF horizons and quartz veins outcropping on the hill slope. Due to the rocky nature of the area, the initial plan for drill testing this target with an aircore rig may need to be re-evaluated.

A total of six rock chip samples were collected with no significant results. Further follow up work is required.

For additional information please Refer to ASX release:

02 December 2018 - Farm-in Agreement for the Smokebush Gold Project at Mt Mulgine, 65km West of Paynes Find WA.

18 December 2019 - Smokebush Exceptional Historic Drilling Results Identified During Project Due Diligence

Justin Virgin

Executive Director

For further information, please contact:

Justin Virgin - Executive Director
Email: terrain@terrainminerals.com.au
Phone: +61 8 9381 5558



Authority:

This announcement has been authorised for release by the Board of Terrain Minerals Limited

ABOUT TERRAIN MINERALS LIMITED:

Terrain Minerals Limited (ASX:TMX) is a minerals exploration company with a Western Australian based asset portfolio consisting of:

- **Great Western – (Sold Subject to Due Diligence).** Option Agreement executed with Red5 Limited (ASX:RED) (includes a \$300,000 non-refundable option fee, now received). Option period is for 5 months and allows for Red5 to conduct due diligence drilling. If exercised Terrain will receive \$2,200,000 worth of Red5 shares issued at a 5-day VWAP. If not exercised all expenditure and data will become the property of Terrain. Refer to the first page of this announcement for further details.
- **Smokebush** - WA Gold Exploration Project; Refer to above announcement.
- **Wild-Viper** Exploration continues to increase Terrain knowledge of this highly prospective gold exploration property. A six-hole RC drill program and trenching has been recently conducted at different locations and further follow up work on newly identified areas will continue into the next field season.
- **Red Mulga** Red Mulga project is situated ~170km NNE of Geraldton in the Yilgarn Craton, Western Australia's Murchison. Rehabilitation activities have been completed and the areas have been relinquished.
- **Project Review:** Terrain Minerals is currently searching and has been assessing potential projects: Gold, Copper, Nickel and industrial minerals in Australia with foreign off shore regions are also being considered. Several jurisdictions of interest have now been identified. All economic commodities are being considered as indicated in previous Quarterly reports.

Compliance Statement:

The Company notes that within the announcement all the information is referenced directly to the relevant original ASX market releases of that technical data.

Terrain would like to confirm to readers that it is not aware of any new information or data that materially affects the information included in the relevant market announcement and, in the case of the estimates of mineral resources, that all material assumptions and technical parameters underpinning the estimates in the relevant market announcement continue to apply and have not materially changed.

Disclaimer:

Information included in this release constitutes forward looking statements. Often, but not always, forward looking statements can generally be identified by the use of forward looking words such as "may", "will", "expect", "intend", "plan", "estimate", "anticipate", "continue" and "guidance" or other similar words, and may include, without limitation, statements regarding plans, strategies and objectives of management, anticipated production or construction commencement dates and expected costs or production outputs.

Forward looking statements inherently involve known and unknown risks, uncertainties and other factors that may cause the company's actual results, performance and achievements to differ materially from any future results, performance or achievements. Relevant factors may include, but are not limited to, changes in commodity prices, foreign exchange fluctuations and general economic conditions, increased costs and demand for production inputs, the speculative nature of exploration and project development, including the risks of obtaining necessary licences and permits and diminishing quantities or grades of reserves, political and social risks, changes to the regulatory framework within which the company operates or may in the future operate environmental conditions including extreme weather conditions, staffing and litigation.

| Terrain Minerals Limited | ASX:TMX | ABN 45 116 153 514 |

| Registered Office: S2, 28 Outram Street, West Perth, WA, 6005 |

| Mail: PO BOX 79, West Perth, WA, 6872 | Ph: +61 8 9381 5558 | www.terrainminerals.com.au |



Forward looking statements are based on the company and its management's assumptions made in good faith relating to the financial, market, regulatory and other relevant environments that exist and effect the company's business operations in the future. Readers are cautioned not to place undue reliance on forward looking statements.

Forward looking statements are only current and relevant for the date of issue. Subject to any continuing obligations under applicable law or any relevant stock exchange listing rules, in providing this information the company does not undertake any obligation to publicly update or revise any of the forward-looking statements or advise of any change in events, conditions or circumstances on which such statement is based.

Competent Person Statement:

The information in this report that relates to historic exploration activities are based on information compiled by Mr. S Nicholls, who is a Member of the Australian Institute of Geoscientists and full time employee of Apex Geoscience Australia Pty Ltd. Mr Nicholls has sufficient experience which is relevant to the style of mineralisation and type of deposit under consideration and to the activity which he is undertaking to qualify as a Competent Person as defined in the 2012 Edition of the 'Australasian Code for Reporting of Exploration Results, Mineral Resources and Ore Reserves'. Mr. Nicholls consents to the inclusion in the report of the matters based on his information in the form and context in which it appears.

Table 1: Rock Chip co-ordinates and assays

Tenement ID	Prospect	Sample ID	Easting GDA94Z50	Northing GDA94Z50	Au (ppb)	As (ppm)	Cu (ppm)	Mo (ppm)	W (ppm)	Co (ppm)	Pb (ppm)	Zn (ppm)
P59/2128	T13	TR18	500170	6773572	17,200	142	458	1.2	10.3	2	23,400	254
P59/2128	T13	TR28	500166	6773572	11,100	159	188	1.8	0.5	1.8	1,340	48
P59/2128	T13	TR21	500169	6773574	889	13	506	0.2	0.1	11.8	2,680	214
P59/2127	T13	TR29	500147	6773592	153	9	8	1.2	10.7	0.6	54	5
P59/2128	T13	TR19	500152	6773637	103	16	5	0.6	0.6	2.4	102	6
P59/2128	T13	TR25	500185	6773803	24	10	8	1.2	1.0	1	9	4
P59/2127	T13	TR26	500138	6773855	17	14	84	0.6	0.2	13.6	6	13
P59/2127	T13	TR27	500139	6773811	12	2	7	0.8	n.d.	2	4	6
E59/2234	Wildflower	TR45	498539	6768619	n.d.	1	4	1.2	0.5	1.2	n.d.	3
E59/2234	Wildflower	TR46	499416	6769396	1,220	24	284	0.6	0.1	37.4	4	10
E59/2234	Wildflower	TR47	499403	6769395	147	177	139	0.6	0.7	39.6	18	12
E59/2234	Wildflower	TR50	499374	6769183	21	1	69	0.6	0.1	16	6	11
E59/2234	Wildflower	TR48	499561	6769395	11	2	23	n.d.	n.d.	12.6	5	7
E59/2234	Wildflower	TR49	499347	6769391	4	39	7	1.0	1.0	2.2	13	6
E59/2234	Wildflower	TR51	499607	6769393	4	3	80	0.4	0.2	38.8	1	7
P59/2128	Monza	TR23	500491	6773708	3,080	1150	91	0.6	0.7	6.6	54	14
P59/2128	Monza	TR24	500542	6773581	605	574	201	0.6	4.3	58	8	66
P59/2128	Monza	TR22	500495	6773694	367	268	18	0.4	0.3	3	44	6
P59/2128	Monza	TR17	500576	6773890	325	383	120	0.6	0.8	10.6	9	18
P59/2128	Monza	TR20	500530	6773633	160	4	130	n.d.	n.d.	8.6	120	8

| Terrain Minerals Limited | ASX:TMX | ABN 45 116 153 514 |

| Registered Office: S2, 28 Outram Street, West Perth, WA, 6005 |

| Mail: PO BOX 79, West Perth, WA, 6872 | Ph: +61 8 9381 5558 | www.terrainminerals.com.au |



P59/2128	Monza	TR16	500573	6773883	91	297	38	<i>n.d.</i>	0.5	2.2	1	11
P59/2126	Hurley	TR13	501690	6772740	538	6	81	2.8	0.3	2	5	17
P59/2126	Hurley	TR12	501692	6772747	331	9	58	<i>n.d.</i>	0.1	3.6	11	23
P59/2126	Hurley	TR14	501798	6772743	10	3	8	0.4	0.3	0.6	1	4
P59/2126	Hurley	TR15	502043	6772561	4	1	10	1.0	<i>n.d.</i>	1.2	<i>n.d.</i>	3
P59/2126	Hurley	TR11	501639	6772762	3	1	26	0.4	<i>n.d.</i>	1.8	2	21
P59/2126	Hurley	TR09	501633	6772587	2	9	60	1.0	0.5	9	24	31
P59/2126	Hurley	TR10	501635	6772581	2	24	49	0.6	2.0	5.2	14	31
E59/2234	E59/2234	TR04	496068	6766998	<i>n.d.</i>	31	5	0.2	0.2	0.4	3	5
E59/2234	E59/2234	TR01	495358	6767252	3	6	8	1.8	2.6	0.6	2	3
P59/2125	P59/2125	TR37	501981	6771119	162	8	21	0.8	1.0	10.4	1	33
P59/2125	P59/2125	TR30	501699	6771141	62	2	2	0.4	0.3	0.4	11	3
P59/2125	P59/2125	TR32	501940	6771136	14	1	35	0.2	0.6	14.2	4	22
P59/2125	P59/2125	TR33	502004	6771136	13	3	199	0.8	0.2	22.4	3	18
P59/2125	P59/2125	TR34	501726	6771137	5	1	3	0.2	0.1	0.6	4	3
P59/2125	P59/2125	TR35	501723	6771165	4	4	4	1.6	1.9	0.8	<i>n.d.</i>	3
P59/2125	P59/2125	TR38	502044	6771113	4	2	49	0.6	<i>n.d.</i>	44.2	2	54
P59/2125	P59/2125	TR36	501907	6771174	3	3	22	0.6	0.6	2.8	2	10
E59/2234	T16	TR41	498072	6768138	64	12	14	0.6	<i>n.d.</i>	7.6	10	11
E59/2234	T16	TR40	498050	6768279	21	56	30	1.4	0.6	2.8	5	6
E59/2234	T16	TR44	497831	6768272	17	7	23	0.6	2.2	1	3	5
E59/2234	T16	TR43	497910	6768289	16	68	164	2.0	1.4	2.2	13	10
E59/2234	T16	TR39	497892	6768312	12	4	11	1.6	1.0	1.6	4	4
E59/2234	T16	TR42	497845	6768209	2	6	7	0.4	<i>n.d.</i>	0.6	1	3
E59/2234	T16W	TR05	496513	6768486	24	141	64	1.4	84.4	4.4	14	41
E59/2234	T16W	TR03	496410	6768365	7	679	49	0.6	1.6	2.4	26	30
E59/2234	T16W	TR06	496520	6768438	7	20	16	1.0	6.0	0.6	2	5
E59/2234	T16W	TR08	496603	6768432	7	36	63	0.4	1.3	16.6	37	76
E59/2234	T16W	TR02	496556	6768555	1	16	5	0.2	0.4	0.8	9	6
E59/2234	T16W	TR07	496560	6768407	1	49	13	2.6	76.9	0.6	1	5
P59/2126	T17	TR31	501757	6773288	41	12	36	1.0	0.4	21	15	30

JORC Tables 1 & 2 of the Rock chip sampling completed at the Smokebush tenement package January 2020

Criteria	JORC Code explanation	Commentary
Sampling techniques	<ul style="list-style-type: none"> Nature and quality of sampling (eg cut channels, random chips, or specific specialised industry standard measurement tools appropriate to the minerals under investigation, such as down hole gamma sondes, or handheld XRF instruments, etc). These examples should not be taken as limiting the broad meaning of sampling. Include reference to measures taken to ensure sample representivity and the appropriate calibration of any measurement tools or systems used. Aspects of the determination of mineralization that are Material to the Public Report. In cases where 'industry standard' work has been done this would be relatively simple (eg 'reverse circulation drilling was used to obtain 1 m samples from which 3 kg was pulverised to produce a 30 g charge for fire assay'). In other cases more explanation may be required, such as where there is coarse gold that has inherent sampling problems. Unusual commodities or mineralization types (eg submarine nodules) may warrant disclosure of detailed information. 	<ul style="list-style-type: none"> Rock samples were collected from visibly mineralized outcropping, subcropping or localised float from areas of interest on the project. and soil samples collected in grid patterns from areas of interest on the project. The rock chip and soil sample weights were approximately 0.5-1 kg and 0.1-0.3 kg in size, respectively. Samples were collected by geologists from Apex Geoscience Australia Pty Ltd which is an independent geological consultancy. Rock samples and soil samples were submitted to Bureau Veritas in Perth, WA for sample preparation and analysis.
Drilling techniques	<ul style="list-style-type: none"> Drill type (eg core, reverse circulation, open-hole hammer, rotary air blast, auger, Bangka, sonic, etc) and details (eg core diameter, triple or standard tube, depth of diamond tails, face-sampling bit or other type, whether core is oriented and if so, by what method, etc). 	<ul style="list-style-type: none"> N/A.
Drill sample recovery	<ul style="list-style-type: none"> Method of recording and assessing core and chip sample recoveries and results assessed. Measures taken to maximise sample recovery and ensure representative nature of the samples. Whether a relationship exists between sample recovery and grade and whether sample bias may have occurred due to preferential loss/gain of fine/coarse material. 	<ul style="list-style-type: none"> N/A.
Logging	<ul style="list-style-type: none"> Whether core and chip samples have been geologically and geotechnically logged to a level of detail to support appropriate Mineral Resource estimation, mining studies and metallurgical studies. Whether logging is qualitative or quantitative in nature. Core (or costean, channel, etc) photography. The total length and percentage of the relevant intersections logged. 	<ul style="list-style-type: none"> Rock samples and sample locations were qualitatively logged for lithology and regolith type, and registered by geologists from Apex Geoscience Australia Pty Ltd.
Sub-sampling techniques and sample preparation	<ul style="list-style-type: none"> If core, whether cut or sawn and whether quarter, half or all core taken. If non-core, whether riffled, tube sampled, rotary split, etc and whether sampled wet or dry. For all sample types, the nature, quality and appropriateness of the sample preparation technique. Quality control procedures adopted for all sub-sampling stages to maximise representivity of samples. Measures taken to ensure that the sampling is representative of the in situ material collected, including for instance results for field duplicate/second-half sampling. Whether sample sizes are appropriate to the grain size of the material being sampled. 	<ul style="list-style-type: none"> Rock samples were collected between 0.5-1 kg and were of sufficient size to represent the outcrop area of interest. The sample sizes and analysis size are considered appropriate to correctly represent the mineralization based on the style of mineralization, sampling methodology and assay value ranges for the commodities of interest. Samples were submitted to Bureau Veritas in Perth for analysis. The samples have been sorted and dried. Primary preparation has been by crushing the whole sample. The whole sample has then been pulverised in a vibrating disc pulveriser.

| Terrain Minerals Limited | ASX:TMX | ABN 45 116 153 514 |

| Registered Office: S2, 28 Outram Street, West Perth, WA, 6005 |

| Mail: PO BOX 79, West Perth, WA, 6872 | Ph: +61 8 9381 5558 | www.terrainminerals.com.au |

Criteria	JORC Code explanation	Commentary
Quality of assay data and laboratory tests	<ul style="list-style-type: none"> The nature, quality and appropriateness of the assaying and laboratory procedures used and whether the technique is considered partial or total. For geophysical tools, spectrometers, handheld XRF instruments, etc, the parameters used in determining the analysis including instrument make and model, reading times, calibrations factors applied and their derivation, etc. Nature of quality control procedures adopted (eg standards, blanks, duplicates, external laboratory checks) and whether acceptable levels of accuracy (ie lack of bias) and precision have been established. 	<ul style="list-style-type: none"> The prepared rock and soil samples underwent Aqua Regia digestion for inductively coupled plasma mass spectrometry (ICP-MS). The assay method and laboratory procedures were appropriate for this style of mineralization. The Aqua Regia and ICP-MS techniques for the surface samples were designed to measure low level multi-element concentrations. The Bureau Veritas lab inserts its own standards and blanks at set frequencies and monitors the precision of the analyses. As well, the lab performs repeat analyses at random intervals, which return acceptably similar values to the original samples. Laboratory procedures are within industry standards and are appropriate for the commodities of interest.
Verification of sampling and assaying	<ul style="list-style-type: none"> The verification of significant intersections by either independent or alternative company personnel. The use of twinned holes. Documentation of primary data, data entry procedures, data verification, data storage (physical and electronic) protocols. Discuss any adjustment to assay data. 	<ul style="list-style-type: none"> Surface samples were collected by Apex Geoscience Australia field geologists. The sample sizes are considered to be appropriate for the type, style and consistency of mineralization encountered. The assay results of rock samples are comparable with the observed mineralogy. The assay method and laboratory procedures were appropriate for this style of mineralization. Data was reported by the laboratory and no adjustment of data was undertaken. All assay results were verified by alternative company personnel and the Qualified Person before release.
Location of data points	<ul style="list-style-type: none"> Accuracy and quality of surveys used to locate drill holes (collar and down-hole surveys), trenches, mine workings and other locations used in Mineral Resource estimation. Specification of the grid system used. Quality and adequacy of topographic control. 	<ul style="list-style-type: none"> Rock sample locations were determined by handheld Garmin GPS, which is considered to be accurate to ± 5 m. Soil sampling was conducted on a 50 x 100 m grid using a handheld Garmin GPS, considered to be accurate to ± 5 m. All coordinates were recorded in MGA Zone 50 datum GDA94.
Data spacing and distribution	<ul style="list-style-type: none"> Data spacing for reporting of Exploration Results. Whether the data spacing and distribution is sufficient to establish the degree of geological and grade continuity appropriate for the Mineral Resource and Ore Reserve estimation procedure(s) and classifications applied. Whether sample compositing has been applied. 	<ul style="list-style-type: none"> The reported rock sampling is of a reconnaissance nature, and thus, only visibly mineralized rocks were targeted for sampling. The reported surface sampling data is insufficient to support or establish any resource definition. Soil sampling was conducted on a nominal grid of 50 x 100 m spacing based on the density of any historic sampling in the area. No compositing has been conducted.
Orientation of data in relation to geological structure	<ul style="list-style-type: none"> Whether the orientation of sampling achieves unbiased sampling of possible structures and the extent to which this is known, considering the deposit type. If the relationship between the drilling orientation and the orientation of key mineralised structures is considered to have introduced a sampling bias, this should be assessed and reported if material. 	<ul style="list-style-type: none"> Rock sampling was reconnaissance based and targeted areas of possible outcrop mineralisation. Soil sampling was conducted on a nominal grid. No orientation bias has been identified in the data.
Sample security	<ul style="list-style-type: none"> The measures taken to ensure sample security. 	<ul style="list-style-type: none"> The sample security consisted of the rock and soil samples being collected from the field into numbered calico bags and loaded into polyweave bags for transport to the laboratory. The chain of custody for samples from collection to delivery at the laboratory was handled by Apex Geoscience Australia personnel. The sample submission was submitted by email to the lab, where the sample counts and numbers were checked by laboratory staff.

Criteria	JORC Code explanation	Commentary
<i>Audits or reviews</i>	<ul style="list-style-type: none"> <i>The results of any audits or reviews of sampling techniques and data.</i> 	<ul style="list-style-type: none"> No formal audits or reviews have been performed on the project, to date. The work was carried out by reputable companies and laboratories using industry best practice.

Section 2 Reporting of Exploration Results

(Criteria listed in the preceding section also apply to this section.)

Criteria	JORC Code explanation	Commentary
<i>Mineral tenement and land tenure status</i>	<ul style="list-style-type: none"> <i>Type, reference name/number, location and ownership including agreements or material issues with third parties such as joint ventures, partnerships, overriding royalties, native title interests, historical sites, wilderness or national park and environmental settings.</i> <i>The security of the tenure held at the time of reporting along with any known impediments to obtaining a licence to operate in the area.</i> 	<ul style="list-style-type: none"> The Smokebush project comprises five granted tenements; E59 02234, P5902125, P5902126, P5902127 and P5902128. Terrain Minerals are in the process of finalising a joint venture with D. Watts-Butler The tenement E 59/2234 was granted on 03/04/2017 and is set to expire on 02/04/2022. Tenements P 59/2125, P 59/2126, P 59/2127, and P 59/2128 were granted on 31/03/2017 and are set to expire on 30/03/2021. The tenements are part of the Mount Mulgine combined reporting group. Tenements P59/2127, P59/2128, P59/2126 and the northern portion of P59/2125 are situated on a proposed conservation estate (FNA 13402) and managed by the Department of Parks and Wildlife. The tenements are in good standing.
<i>Exploration done by other parties</i>	<ul style="list-style-type: none"> <i>Acknowledgment and appraisal of exploration by other parties.</i> 	<ul style="list-style-type: none"> Significant historic work has been completed over the tenements in question, including historic small-scale mining operations, drilling, geophysical surveys and abundant surface sampling. Previous operators of the tenement areas include; Westfield Minerals (1965), Minefields Exploration (1970-1982), ANZECO (1970-1982), Golconda (1983), General Gold Resources NL (1991-1993), Renison Goldfields Consolidated (1993-1996), Normandy Exploration (1997-1999), Gindalbie Gold NL (1999-2006), Vital Metals Ltd (2005-2009), Minjar Gold Pty Ltd. (1999-2017), Hazelwood Resources Ltd. (2010-2015), and Tungsten Mining NL (2015-2017). Historic Gold Exploration across the Smokebush project area was originally carried out by; Minjar, RGC, Monarch, Gindalbie, Golconda and GGR ranging from 1970 through 2017. 1983 Golconda, undertook regional geochemical exploration and drill testing. Soil sampling returned anomalous gold and arsenic in the wildflower prospect area. 1991-1993 GGR drilled an RC program and conducted soil sampling detailing significant gold mineralization at the Trench and Hill prospects. 1993-1996 RGC in joint venture with GGR, through RAB and RC relogging and additional drilling delineated small gold resources at highland chief, trench and camp. 1997-1999 Normandy exploration carried out RAB and RC drilling with initially encouraging RAB results followed by disappointing RC results. 1999- 2004 Gindalbie carried out soil geochemical exploration identifying several gold arsenic anomalies in tenements E59/2234, P59/2125 &P59/2126. 2007 Monarch conducted soil geochemistry exploration

| Terrain Minerals Limited | ASX:TMX | ABN 45 116 153 514 |

| Registered Office: S2, 28 Outram Street, West Perth, WA, 6005 |

| Mail: PO BOX 79, West Perth, WA, 6872 | Ph: +61 8 9381 5558 | www.terrainminerals.com.au |

Criteria	JORC Code explanation	Commentary
		<ul style="list-style-type: none"> 2013-2016 Minjar conducted significant resource definition through soil geochemistry exploration followed by RAB and RC drilling identifying several gold and arsenic anomalies in tenements P59/2125-2128 and E59/2234
Geology	<ul style="list-style-type: none"> <i>Deposit type, geological setting and style of mineralization.</i> 	<ul style="list-style-type: none"> The Smokebush project area is situated within the southern Yalgoo-Singleton Greenstone Belt of the Archaean Yilgarn Craton. This greenstone belt comprises supracrustal greenstone rocks, including mafic and felsic volcanic rocks, banded iron formation (BIF) and clastic sedimentary rocks. The belt strikes north-south and broadens to the south where it has been intruded by multi-phase granitoids which have consequently metamorphosed the surrounding greenstone sequence comprising the Mt Mulgine Anticline.
Drill hole Information	<ul style="list-style-type: none"> <i>A summary of all information material to the understanding of the exploration results including a tabulation of the following information for all Material drill holes:</i> <ul style="list-style-type: none"> <i>easting and northing of the drill hole collar</i> <i>elevation or RL (Reduced Level – elevation above sea level in metres) of the drill hole collar</i> <i>dip and azimuth of the hole</i> <i>down hole length and interception depth</i> <i>hole length.</i> <i>If the exclusion of this information is justified on the basis that the information is not Material and this exclusion does not detract from the understanding of the report, the Competent Person should clearly explain why this is the case.</i> 	<ul style="list-style-type: none"> N/A.
Data aggregation methods	<ul style="list-style-type: none"> <i>In reporting Exploration Results, weighting averaging techniques, maximum and/or minimum grade truncations (eg cutting of high grades) and cut-off grades are usually Material and should be stated.</i> <i>Where aggregate intercepts incorporate short lengths of high grade results and longer lengths of low grade results, the procedure used for such aggregation should be stated and some typical examples of such aggregations should be shown in detail.</i> <i>The assumptions used for any reporting of metal equivalent values should be clearly stated.</i> 	<ul style="list-style-type: none"> No aggregation or metal equivalent values are not being reported.
Relationship between mineralization widths and intercept lengths	<ul style="list-style-type: none"> <i>These relationships are particularly important in the reporting of Exploration Results.</i> <i>If the geometry of the mineralization with respect to the drill hole angle is known, its nature should be reported.</i> <i>If it is not known and only the down hole lengths are reported, there should be a clear statement to this effect (eg 'down hole length, true width not known').</i> 	<ul style="list-style-type: none"> N/A. Only rock chip data collected.
Diagrams	<ul style="list-style-type: none"> <i>Appropriate maps and sections (with scales) and tabulations of intercepts should be included for any significant discovery being reported These should include, but not be limited to a plan view of drill hole collar locations and appropriate sectional views.</i> 	<ul style="list-style-type: none"> An appropriate exploration map has been included in the release.
Balanced reporting	<ul style="list-style-type: none"> <i>Where comprehensive reporting of all Exploration Results is not practicable, representative reporting of both low and high grades and/or widths should be practiced to avoid misleading reporting of Exploration Results.</i> 	<ul style="list-style-type: none"> A table containing anomalous rock chip sampling results to date has been included in the release. All locations are presented in the table and highlights shown on the attached plans.

Criteria	JORC Code explanation	Commentary
<i>Other substantive exploration data</i>	<ul style="list-style-type: none"> <i>Other exploration data, if meaningful and material, should be reported including (but not limited to): geological observations; geophysical survey results; geochemical survey results; bulk samples – size and method of treatment; metallurgical test results; bulk density, groundwater, geotechnical and rock characteristics; potential deleterious or contaminating substances.</i> 	<ul style="list-style-type: none"> An exploration plan from the recent reconnaissance rock chip sampling program has been included in the release.
<i>Further work</i>	<ul style="list-style-type: none"> <i>The nature and scale of planned further work (eg tests for lateral extensions or depth extensions or large-scale step-out drilling).</i> <i>Diagrams clearly highlighting the areas of possible extensions, including the main geological interpretations and future drilling areas, provided this information is not commercially sensitive.</i> 	<ul style="list-style-type: none"> Future work may include preliminary RC drilling to follow up anomalous results from the rock chip sampling.