

**TO: COMPANY ANNOUNCEMENTS OFFICE
ASX LIMITED**

DATE: 10 JANUARY 2011

**DIBETE DISCOVERY: FINAL RESULTS ON DRILL HOLE DBRC014:
INTERSECTION OF 38m @ 1.72% Cu and 119.5 g/t Ag from a
depth of 16m.**

HIGHLIGHTS:

Latest drill results:

- The above results of hole DBRC014 includes 3m @ 9.16% Cu and 894 g/t Ag in the 38 m @ 1.72% copper and 119.5 g/t silver intersection and confirms a supergene style of mineralisation in a weathered zone over an inferred 200m strike length. Mineralisation on line 6100 E, which contains DBRC014, is open to the north, west and east and was intercepted at a depth of 16m from surface.
- Hole DBRC014 is along strike from DBRD006 and DBRC013 on drill line Section 6100E, with best results detailed below. DBRC004 and DBRC005 both encountered mineralisation some 300 meters to the east on Section 6400E. Continuity between these areas has not yet been confirmed.

**Update on PL111/94 and PL 54/98: New Dibete
discovery area:**

- The Company has been requested for further information on its exploration plans on the Dibete discovery under its application for an extension to the Department of Geological Survey ("DGS"), Botswana.
- The information required will be lodged before 3 February 2011, being the date specified by the DGS.
- The extension is being sought by the Company for its new Dibete discovery which over laps PL 111/94 and PL 54/98.
- The new discovery at Airstrip Copper (PL110/94) was approved for an extension by the DGS in December 2010 is just 7km north of the Dibete discovery.

Market Cap

approx \$15M at 14c per share

Cash

\$3.1M

Issued Capital

106,421,094 ordinary shares

Unlisted Options

1,416,666 at 10c

1,366,666 at 15c

1,366,666 at 20c

Total 4,149,998

Substantial shareholders

1. Vermar Pty Ltd 12.715%
2. Bell IXL Investments Ltd 6.803%
3. Polarity B Pty Ltd 5.880%

Directors

Mr Patrick Volpe (Chairman)

Mr Massimo Cellante

(Non-executive Director)

Dr Paul Woolrich

(Non-executive Director)

www.botswanametals.com.au

Registered Office

Suite 5.10, Level 5, Pacific Tower

737 Burwood Road

Hawthorn, Victoria, 3122

P +61 3 9813 5888

F +61 3 9813 2668

Contact

Pat Volpe

M +61 488 071 025

P +61 3 9813 5888

Media Relations

Rudi Michelson

Monsoon Communications

Level 1, 350 Collins Street

Melbourne, Victoria, 3000

P +61 3 9620 3333

P +61 3 9620 3200

ABN 96 122 995 073

SECTION 6100 E SIGNIFICANT RESULTS:

DBRD006*	18 metres @ 1.78% Cu and 28.9 g/t Ag Including 5 m @ 4.19% Cu and 92.5 g/t Ag Including 9m @ 2.75% and 54.7 g/t Ag
DBRC013*	18 metres @ 1.99% Cu and 98.4 g/t Ag. Including 10 metres @ 3.11% Cu and 163.0 g/t Ag.
DBRC014#	38 metres @ 1.72% Cu and 119.5 g/t Ag. Including 10 metres @ 2.33% Cu and 126.5 g/t Ag. Including 8 metres at 3.86% Cu and 364.1 g/t Ag. Including 3 metres at 9.16 % Cu and 894 g/t Ag.

SECTION 6400E: SIGNIFICANT RESULTS:

DBRD004*	9 metres @ 0.92% Cu and 17.2 g/t Ag. Including 4 metres @ 1.28% Cu and 25.4 g/t Ag.
DBRD005*	3m @ 0.69% Cu and 8 g/t Ag and 6m @ 0.52% Cu and 1m @ 0.43% Cu and and 1m @ 0.52% Cu and 4.2 g/t Ag.

Note:

- * indicates previously reported results,
- # indicates hole DBRC014, previously reported to 36m depth and ending in mineralisation now completed to depth with updated results, and
- Grades of copper were calculated on the basis of using a 0.3% Cu cut off grade.

DETAILS:

The Board of Botswana Metals Limited (“BML”) is pleased to announce that it has received additional laboratory results for DBRC014 hole at its Dibete prospect.

The mineralisation intersected is probably partially secondary sulphides near the base of the hole as some sulphur is reported in the analyses.

The results confirm continuity and thickness of the supergene blanket of copper and silver along the local grid line 6100E, over a distance now inferred at approximately 200 metres.

The thickness of supergene mineralisation was not expected but suggests that the thickness present at Dibete is significant. Whether the mineralisation is predominantly associated with the mapped shear zones and EM axes or is more widespread is unknown at present but will be assessed with further drilling during the March Quarter.

The interpreted extent of this supergene Cu-Ag mineralisation as shown in Figure 2 and is based on both drill data and the location of old copper workings.

INVERTED RESISTIVITY

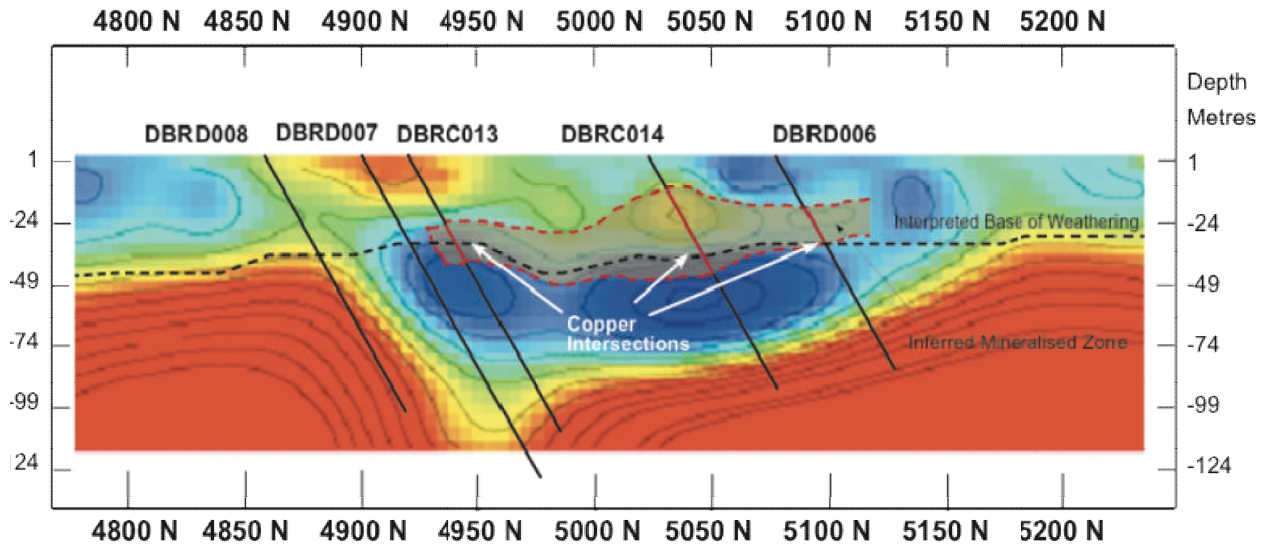


Figure 1 Supergene blanket interpreted from drilling results shown in brown overlay on IP section with interpreted general base of weathering.

Table 1 below details all significant drill hole results currently received by the Company. Results from some holes are still outstanding and will be reported when received and interpreted. All intersections were calculated using a 0.3% copper cut off grade.

Hole No	Easting WGS 84	Northing WGS 84	RC depth m	From m	To m	Interval m	Cu %	Ag g/t
DBRD 004	638490	7593976	50	3	4	1 m @	0.4	-
				27	36	9 m @	0.92	17.2
				27	31	Including 4 m @	1.28	25.4
				34	35	1 m @	1.76	4.2
DBRD 005	638534	7593894	51	8	11	3 m @	0.69	8
				8	9	Including 1 m @	1.361	14.9
				22	28	6 m @	0.52	-
				23	24	Including 1 m @	1.06	-
				31	35	4 m @	0.7	4.1
				32	34	Including 2 m @	0.91	6.1
				41	42	1 m @	0.43	-
				46	47	1 m @	0.52	4.2
DBRD 006	638190	7593904	49.7	24	42	18 m @	1.78	28.9
				26	35	Including 9 m @	2.75	54.7
				26	31	Including 5 m @	4.19	92.5
				32	35	Including 3 m @	1.03	7.6
				37	39	Including 2 m @	2.24	-
DBRC 013	638261	7593767	130	32	50	18 m @	1.99	98.4
				37	47	Including 10 m @	3.11	163
						Including 2 m @	10.75	543
DBRC 014	638214	7593858	110	16	54	38 m @	1.72	119.5
				16	37	Including 21 m @	1.32	67.7
				27	37	Including 10 m @	2.33	126.5
				44	52	Including 8 m @	3.86	364.1
				48	51	Including 3 m @	9.16	894

Table 1 Significant RC Cuttings Results

Figure 2 shows the location of the Phase 1 drill holes and holes DBRC 013 and DBRC 014 in relation to the shear zones interpreted on Google Earth.

The mapped shear zones are subparallel to known major shears at Airstrip Copper that have extensive alteration or oxidation associated with them. If the shear zones mapped at Dibete are real, then there may be a series of deeper keels of high grade secondary mineralisation below a more widespread but thinner supergene blanket of mineralisation. Mineralisation in holes DBRD 004 and DBRD 005 may be outside the influence of the sheared zone interpreted in this vicinity.

These possibilities will be tested by drilling during the March Quarter.

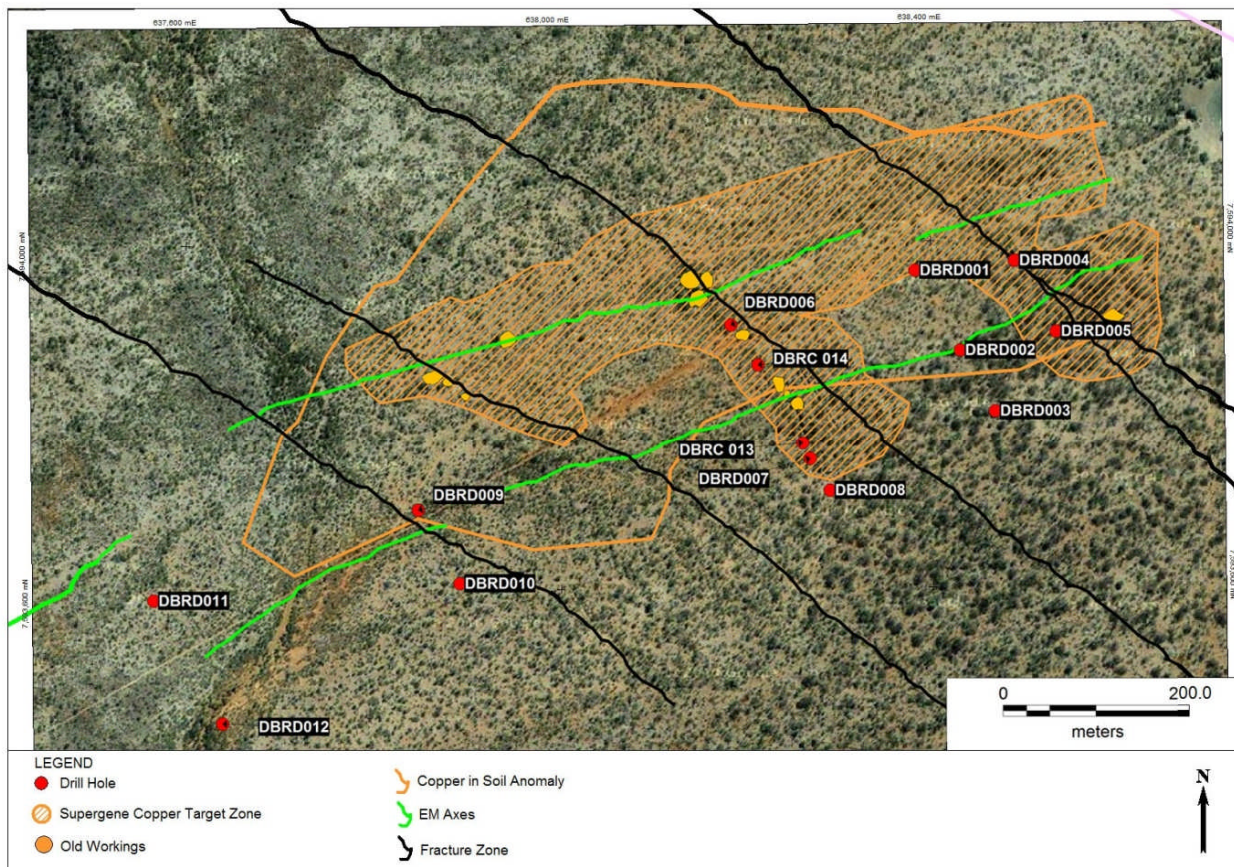


Figure 2 Google Earth image with supergene copper target and selected drill holes

The supergene copper – silver target zone is shown as a hatched brown overlay and includes all the known workings and drill hole intersections of supergene copper. The target zone is predominantly contained within the copper in soil anomaly which is outlined in the copper coloured line. The target zone shown above is approximately 850 metres along strike and open to the east and north, and possibly to the west also.

The relationship of the known workings to the ground EM axes and to the shear zones suggests that both may have a role in controlling the supergene mineralisation.

The phase one drilling pre-collars were drilled by RC (reverse circulation) through zones not anticipated to contain significant mineralisation which were then completed with diamond drilling through the interpreted target zone to final hole depth. Phase two holes were drilled by RC only.

Figures 3-5 show the locations of the drill holes with intersection data and an east-west section with the mineralisation plotted on drill traces. All holes were drilled at dip 60 degrees, azimuth 325 degrees true.

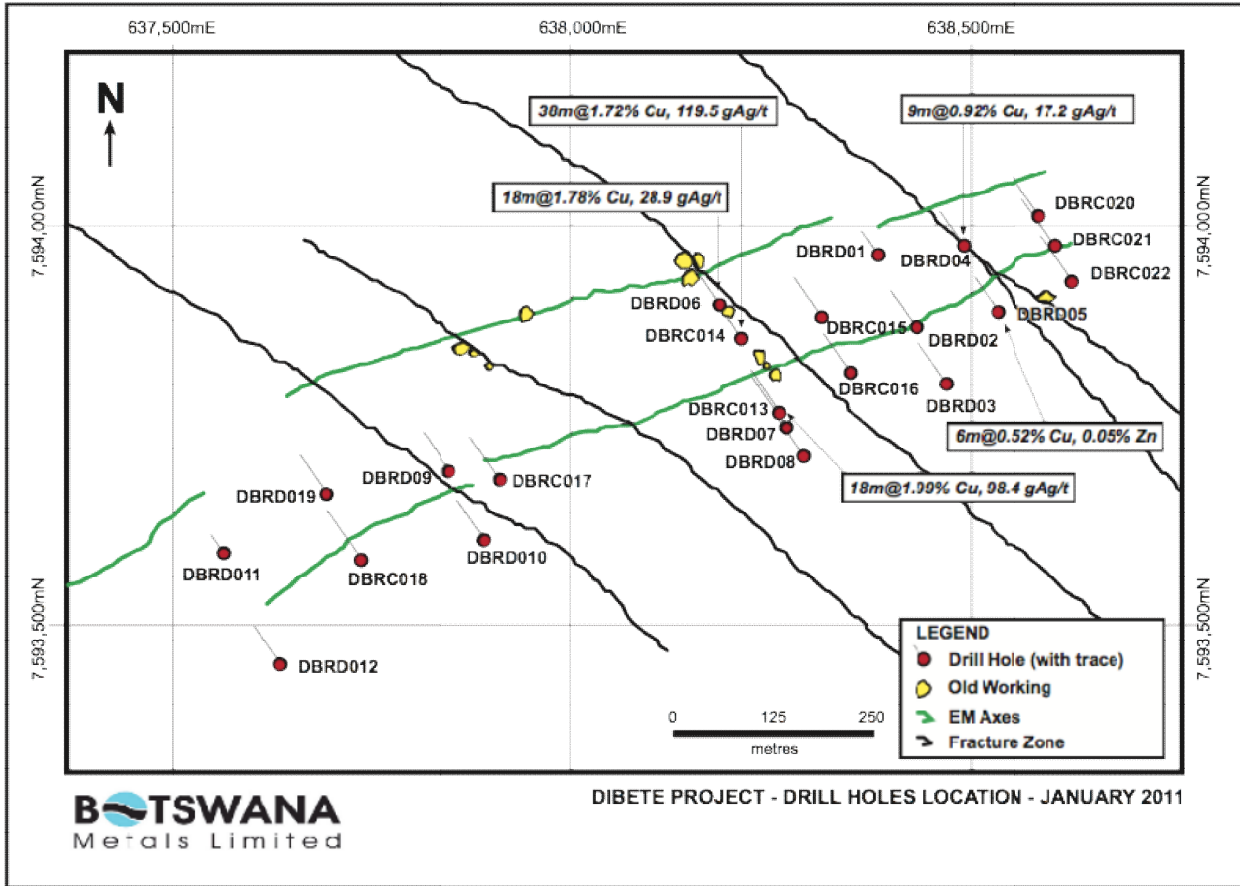


Figure 3: Plan of drill holes at Dibete Prospect showing intersection data.

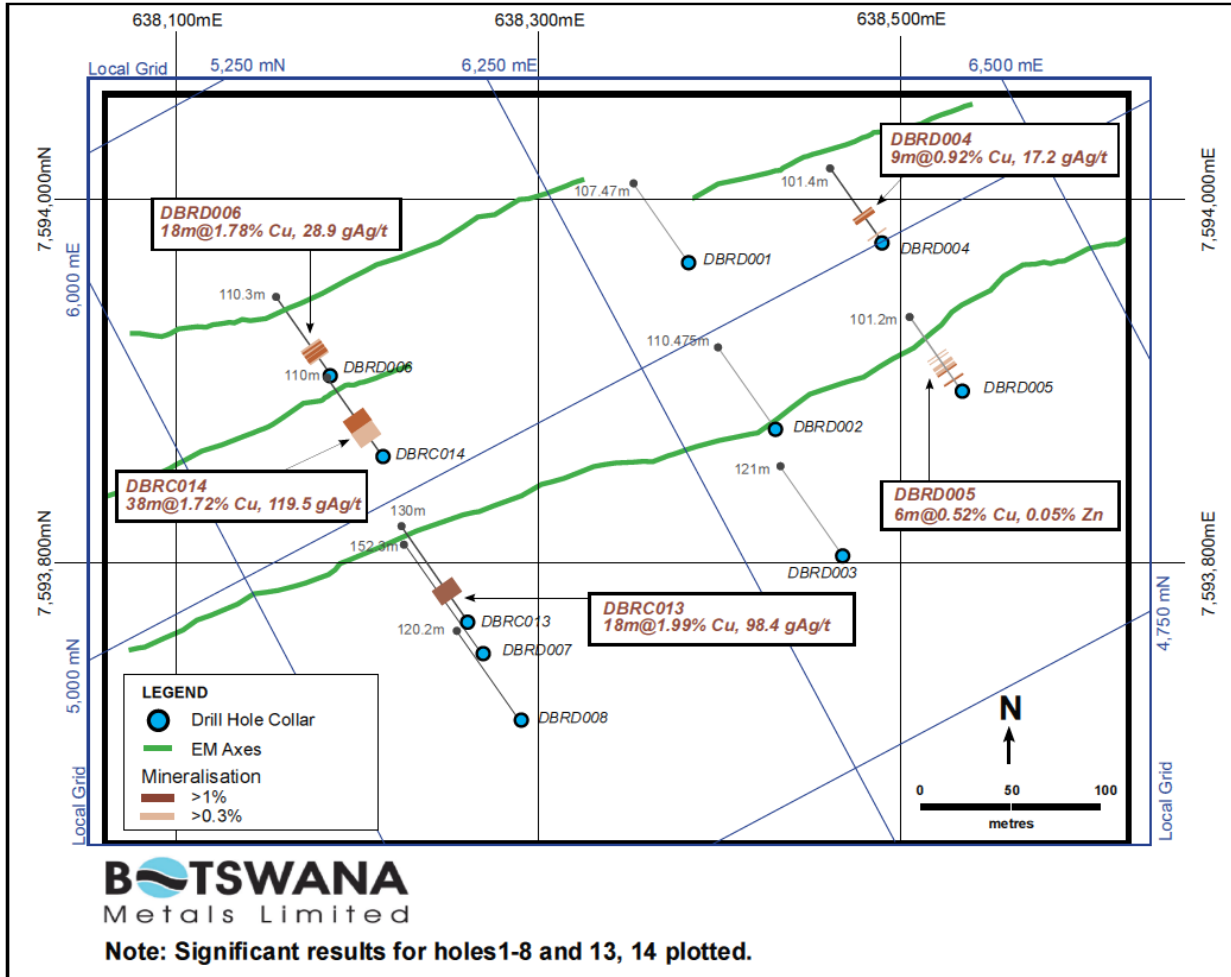


Figure 4: Details of intersections on lines 6100E and 6400E.

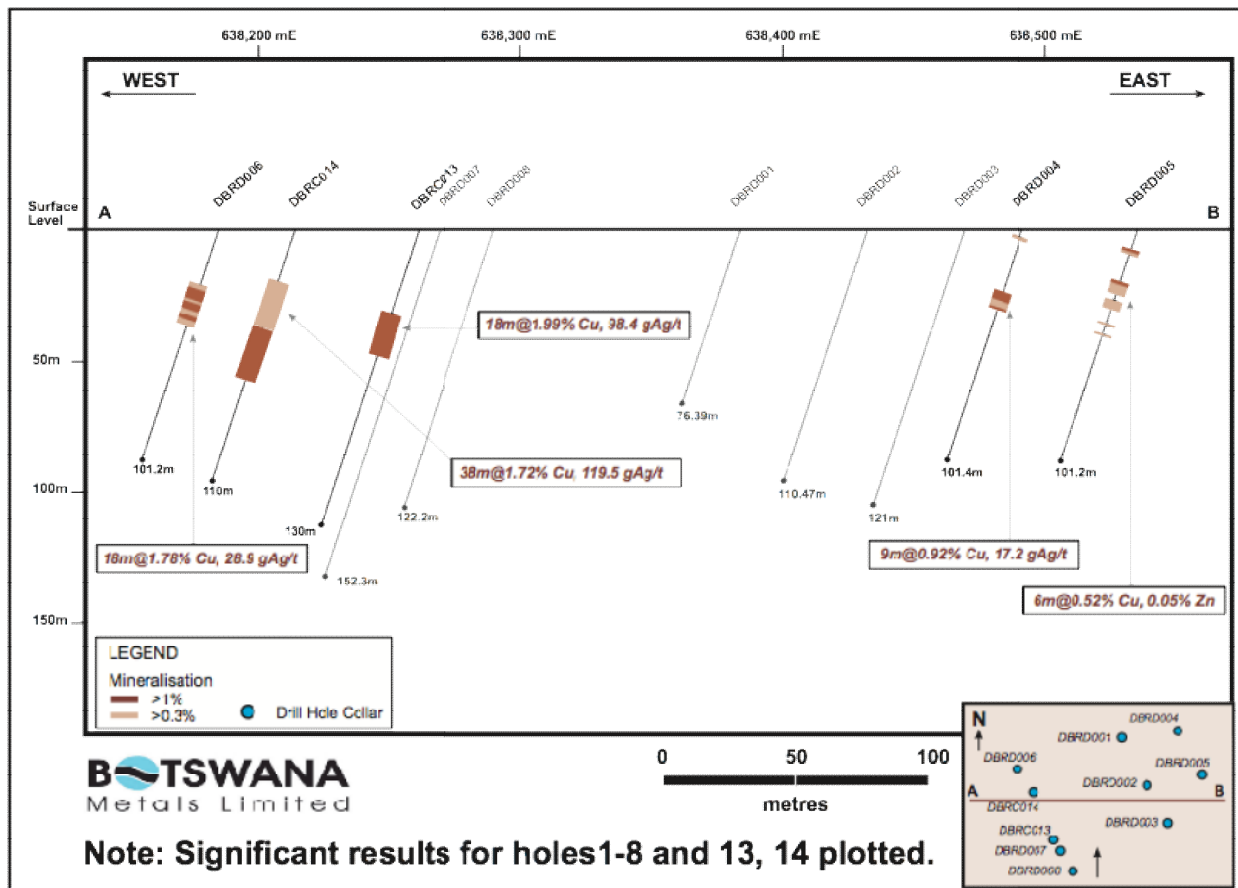


Figure 5 Long section east-west through the Dibete prospect with all drill holes and mineralisation projected onto a single plane.

A third phase of drilling to determine the areal extent of the supergene copper-silver mineralisation, will commence in the first quarter of 2011. Initial planning is for a program of 84 holes, subject to progressive results determined in the field.

The market will be kept informed as additional laboratory results and analyses are received.

Pat Volpe
Chairman

The information in this report that relates to Exploration Results is based on information compiled by Mr Peter Temby, a consultant employed by Anpet Exploration Pty Ltd and a member of The Australian Institute of Geoscientists.

Mr Temby has sufficient experience that is relevant to the style of mineralisation and type of deposit under consideration and to the activities which he is undertaking to qualify as a Competent Person as defined in the 2004 Edition of the Australasian Code for Reporting of Exploration Results, Mineral Resources and Ore Reserves. Mr Temby consents to the inclusion in this report of matters based on his information in the form and context in which it appears.

Drill Hole Data Dibete

HOLEID	X_local	Y_local	Easting	Northing	RC Pre-collar	Diamond tail	DEPTH	DIP	AZIMUTH
D8RD001	6300	5040	28.33825	-21.7525	50	26.39	76.39	60	Grid N
D8RD002	6300	4936	28.33872	-21.7534	50	60.475	110.475	60	Grid N
D8RD003	6300	4856	28.33909	-21.754	70	51	121	60	Grid N
D8RD004	6400	5000	28.33929	-21.7524	50	51.4	101.4	60	Grid N
D8RD005	6400	4906	28.33971	-21.7532	51	51.2	102.2	60	Grid N
D8RD006	6100	5076	28.33635	-21.7531	49.7	51.5	101.2	60	Grid N
D8RD007	6100	4900	28.33716	-21.7545	51	101.3	152.3	60	Grid N
D8RD008	6100	4858	28.33737	-21.7548	69	53.2	122.2	60	Grid N
D8RD009	5700	5044	28.33331	-21.755	51	69	120	60	Grid N
D8RD010	5700	4950	28.33353	-21.7558	51	69	120	60	Grid N
D8RD011	5400	5085	28.33036	-21.756	51	0	51	60	Grid N
D8RD012	5400	4926	28.33108	-21.7572	51	69	120	60	Grid N
D8RC 013	6100	4922			130	0	130	-60	Grid N
D8RC 014	6100	5022			110	0	110	-60	Grid N
D8RC 015	6200	5000			130	0	130	-60	Grid N
D8RC 016	6200	4925			120	0	120	-60	Grid N
D8RC 017	5750	5008			130	0	130	-60	Grid N
D8RC 018	5550	5000			150	0	150	-60	Grid N
D8RC 019	5550	5092			120	0	120	-60	Grid N
D8RC 020	6500	4990			120	0	120	-60	Grid N
D8RC 021	6500	4950			140	0	140	-60	Grid N
D8RC 022	6500	4900			140	0	140	-60	Grid N