

7 May 2012

Exciting new ground for Ventnor Resources in the Kumarina district

Australian base metals company Ventnor Resources Limited (**ASX: VRX**) ("Ventnor") announces accumulation of a significant landholding in the southeast margin of the Bangemall Basin at Kumarina, 200 kilometres north of Meekatharra, Western Australia, 75 kilometres northwest of Ventnor's Thaduna/Green Dragon Copper project and 65 kilometres north of Sandfire's Degruessa project:

- **Project area 1,887 square kilometres**
- **Minimal modern exploration to date**
- **Adjacent to copper exploration targets at Horseshoe Lights, Kumarina, Ilgarari and Butcherbird in the Bangemall Basin**
- **Largest landholding in active exploration district**
- **HyVista aerial survey target**

Ventnor has accumulated this landholding as Exploration License applications since mid-2011 with the intention of having a sufficient holding to conduct exploration on a greenfields project with modern exploration techniques including HyVista, which is a recently developed mineral mapping technology utilising an airborne hyperspectral scanner.

"We now have an extensive contiguous holding in a highly prospective area to undertake a new approach to greenfields exploration using modern techniques," Ventnor Resources Managing Director Bruce Maluish said.

"This project is secondary to our Thaduna and Green Dragon copper project which is nearing a resource estimate but is in proximity to our main focus and nearby active copper exploration prospects."

"Surprisingly little or no exploration has been undertaken in this region. We will initiate a HyVista program which will allow us to economically and efficiently examine the surface mineralogy over such a large area and pinpoint areas of interest for more intensive exploration," Mr Maluish said.

Registered Office:
Lvl 1 6 Thelma Street
West Perth WA 6005
Email info@ventnorresources.com.au
www.ventnorresources.com.au
ABN 59 142 014 873

Fast Facts

Capital Structure

Shares on Issue 61.8 million

Unlisted Options 25.4 million

Market Cap @ 50c \$31 million

Cash on hand \$4.9 million

(at 31 March 2012)

Corporate Directory

Paul Boyatzis

Non-Executive Chairman

Bruce Maluish

Managing Director

John Geary

Executive Director

Peter Pawlowitsch

Non-Executive Director

Company Projects

Thaduna/Green Dragon Copper project in the Doolgunna district

Warrawanda/Nickel Hills nickel project south of Newman

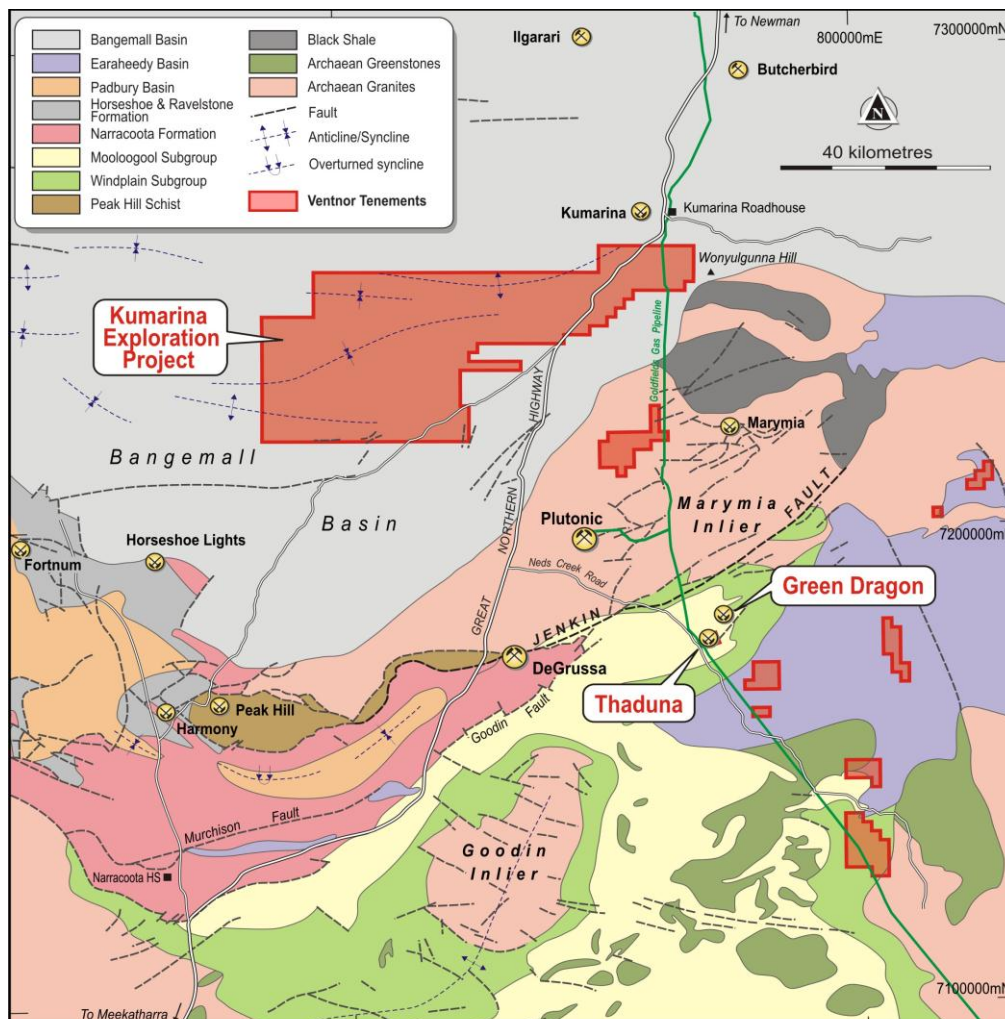
Georgina Basin IOCG Project western Queensland

Exploration

The Kumarina Project lies within the Mesoproterozoic Bangemall Basin which is located between the Yilgarn and Pilbara Cratons. Locally the Project area sits on the Bullen Platform and is hosted in the Collier Subgroup.

The western Bangemall Basin is host to a number of active exploration companies with multiple targets for a variety of minerals:

- Horseshoe Metals is exploring the Horseshoe Lights project 65 kilometres southwest, and also its Kumarina project including the Rinaldi prospect 45 kilometres north.
- Montezuma Mining Company is exploring the Butcherbird prospect 80 kilometres north.
- Kumarina Resources is exploring the Ilgarari project 80 kilometres north.
- Abra Mining has the Mulgul Jilawarra and Mt Deverell projects 65 kilometres northwest.
- The Marymia and Plutonic mines are 45 kilometres east in the Marymia Inlier.



Regional geological map of the Thaduna - Degrudda area

Registered Office:
 Lvl 1 6 Thelma Street
 West Perth WA 6005
 Email info@ventnorresources.com.au
www.ventnorresources.com.au
 ABN 59 142 014 873

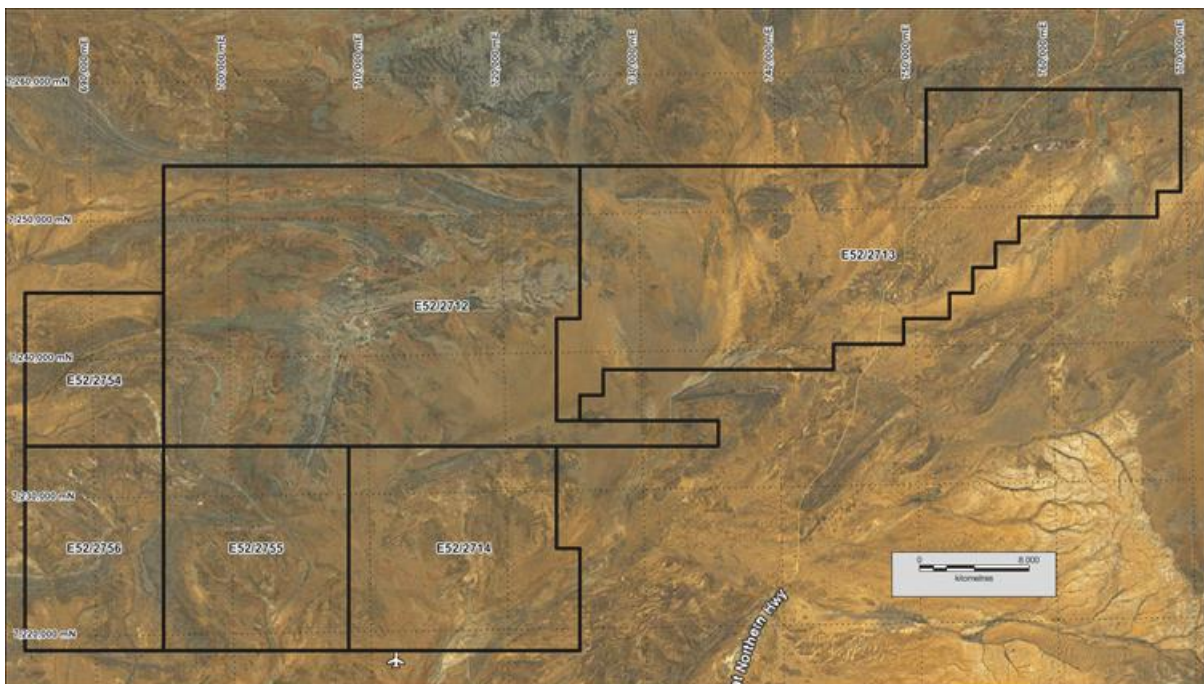
Existing Information

There are a number of publicly available data sets which cover the area and indicate some significant geological features. However, there has been no recorded modern exploration conducted on the area.

A search of available reports on WAMEX has discovered no reported geochem or drilling results.

Ventnor proposes to initially conduct a HyVista aerial survey over the area for more intensive exploration follow up. Data capture is underway with field checking to be conducted following interrogation of the results.

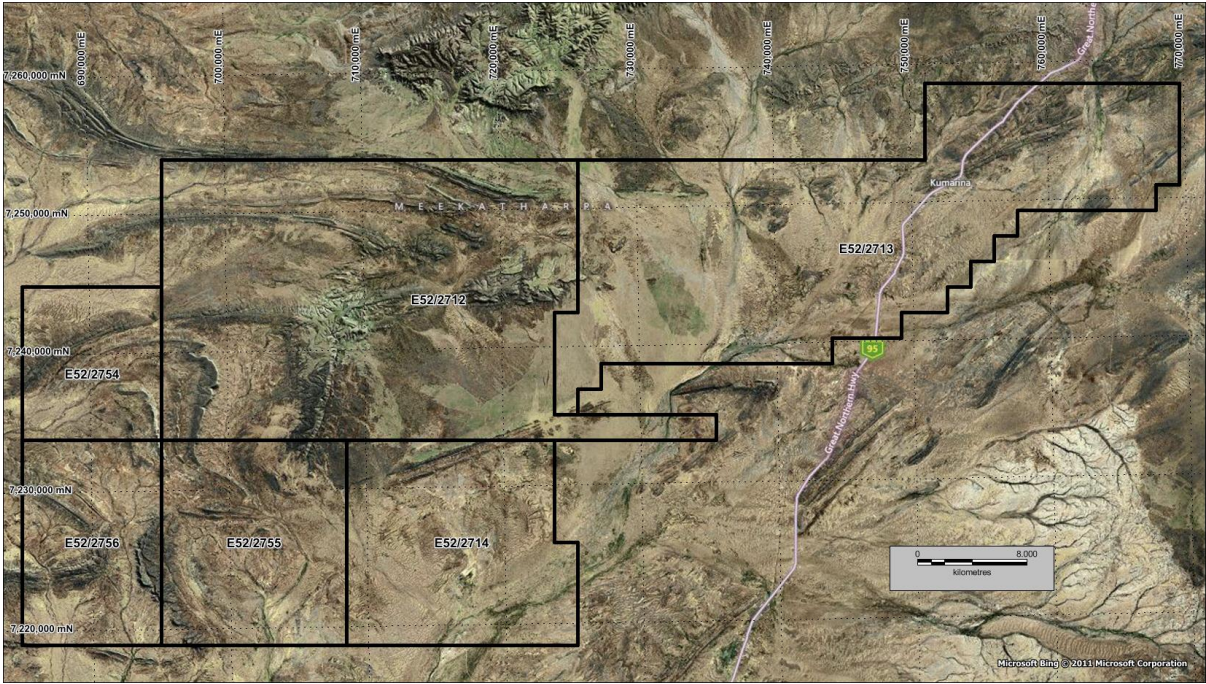
Images below covering the project are from the publicly available data sets:



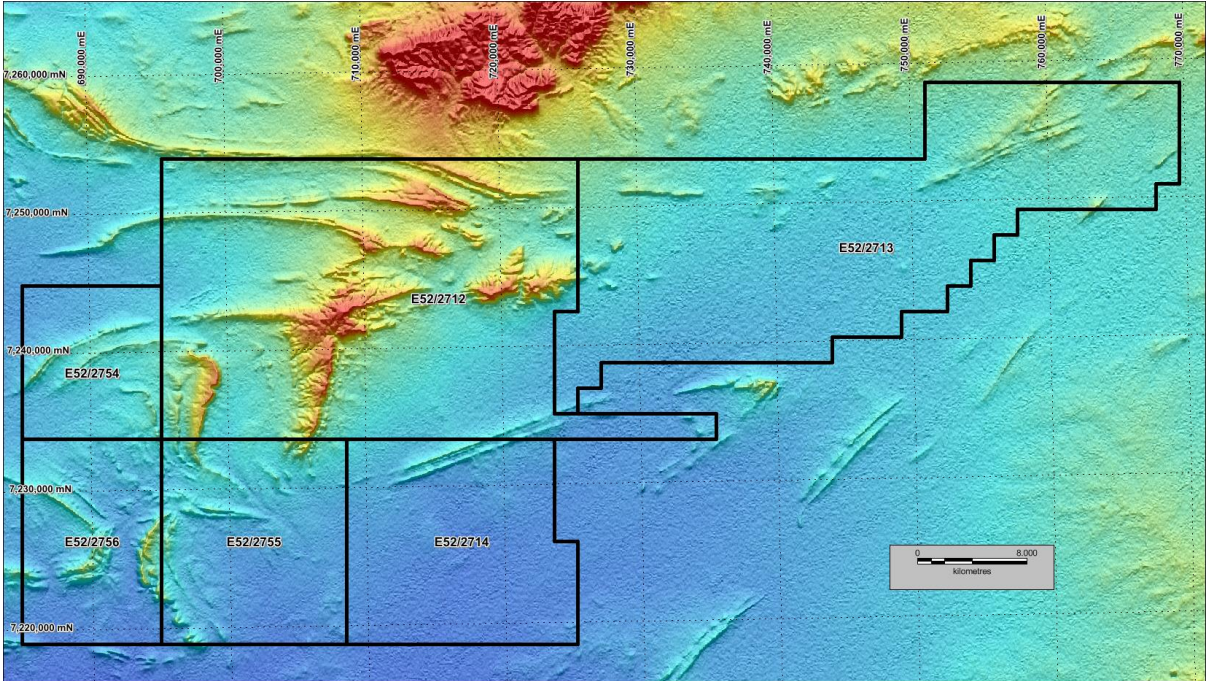
Google Earth image



Ventnor Resources Limited



Bing image

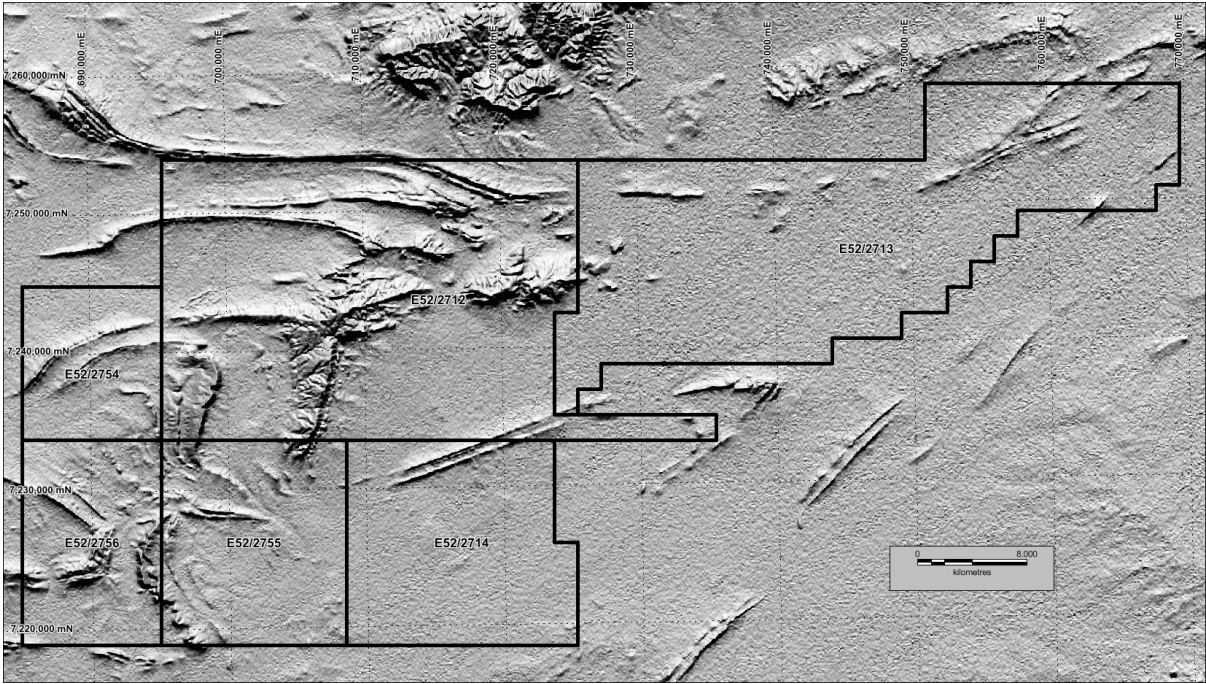


Colour DEM

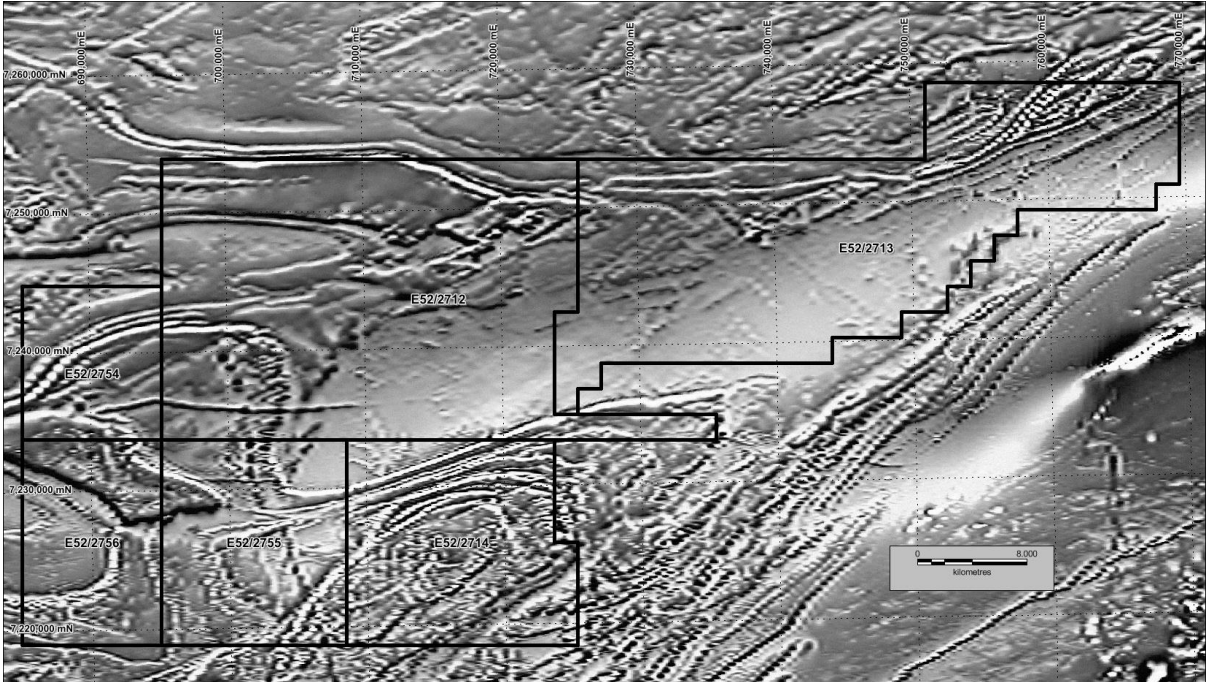
Registered Office:
Lvl 1 6 Thelma Street
West Perth WA 6005
Email info@ventnorresources.com.au
www.ventnorresources.com.au
ABN 59 142 014 873



Ventnor Resources Limited

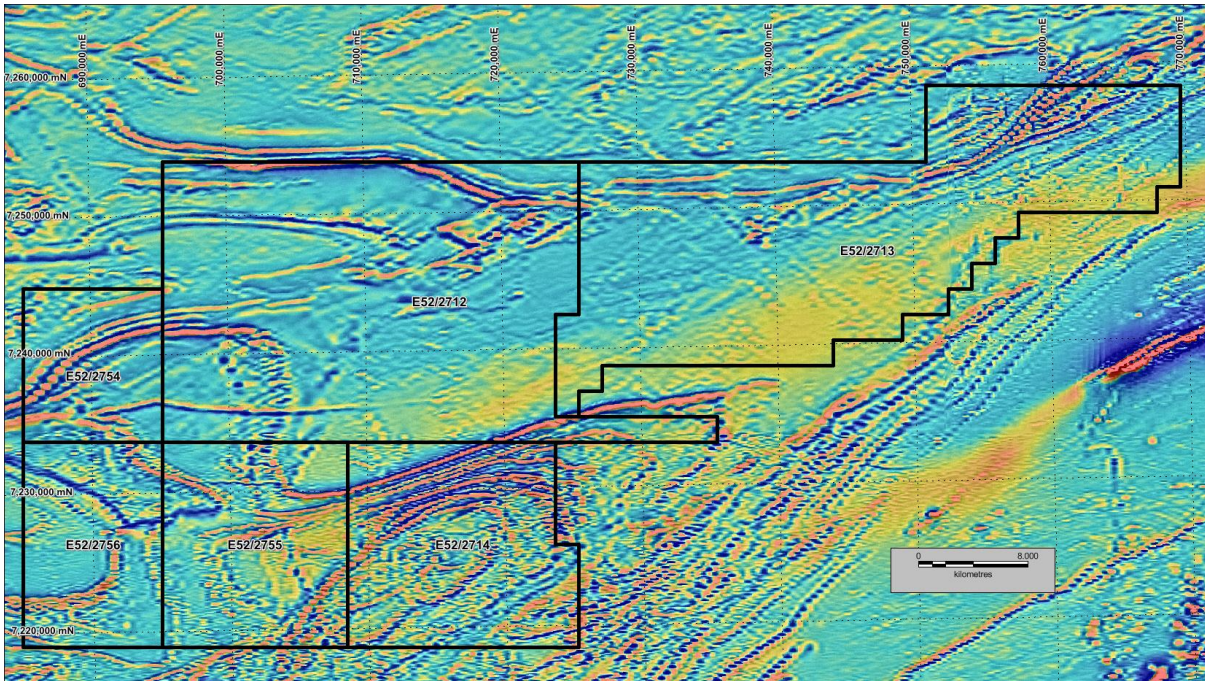


B&W DEM

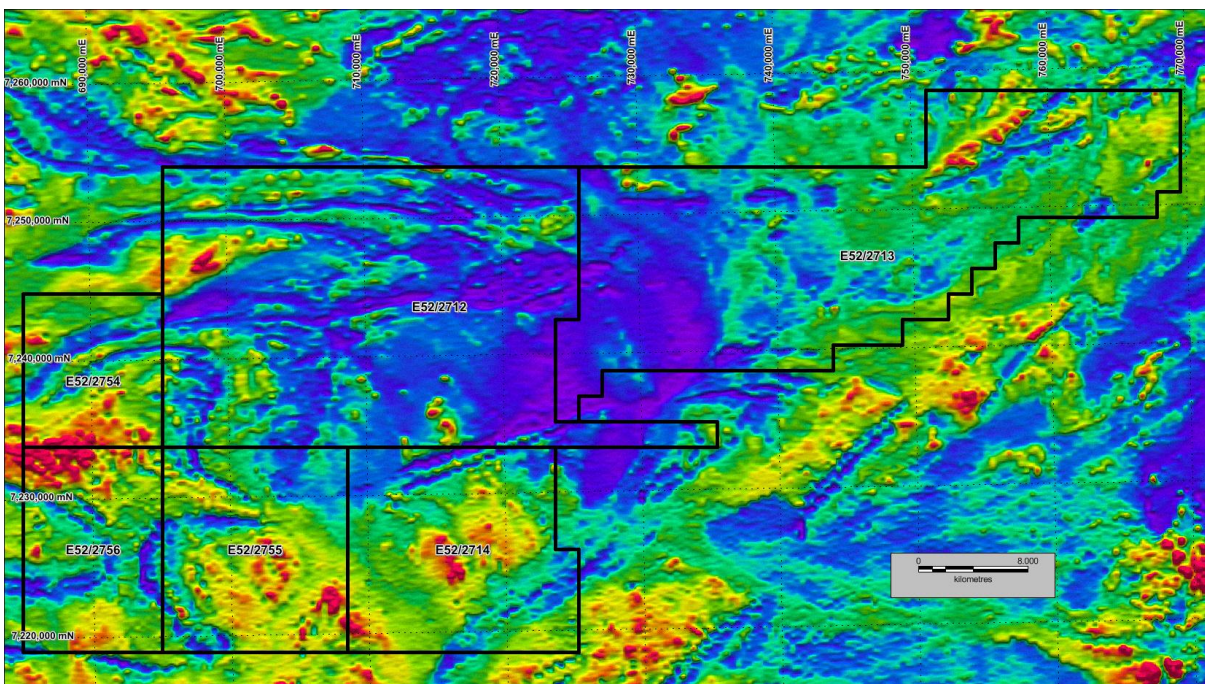


B&W TMI

Registered Office:
Lvl 1 6 Thelma Street
West Perth WA 6005
Email info@ventnorresources.com.au
www.ventnorresources.com.au
ABN 59 142 014 873

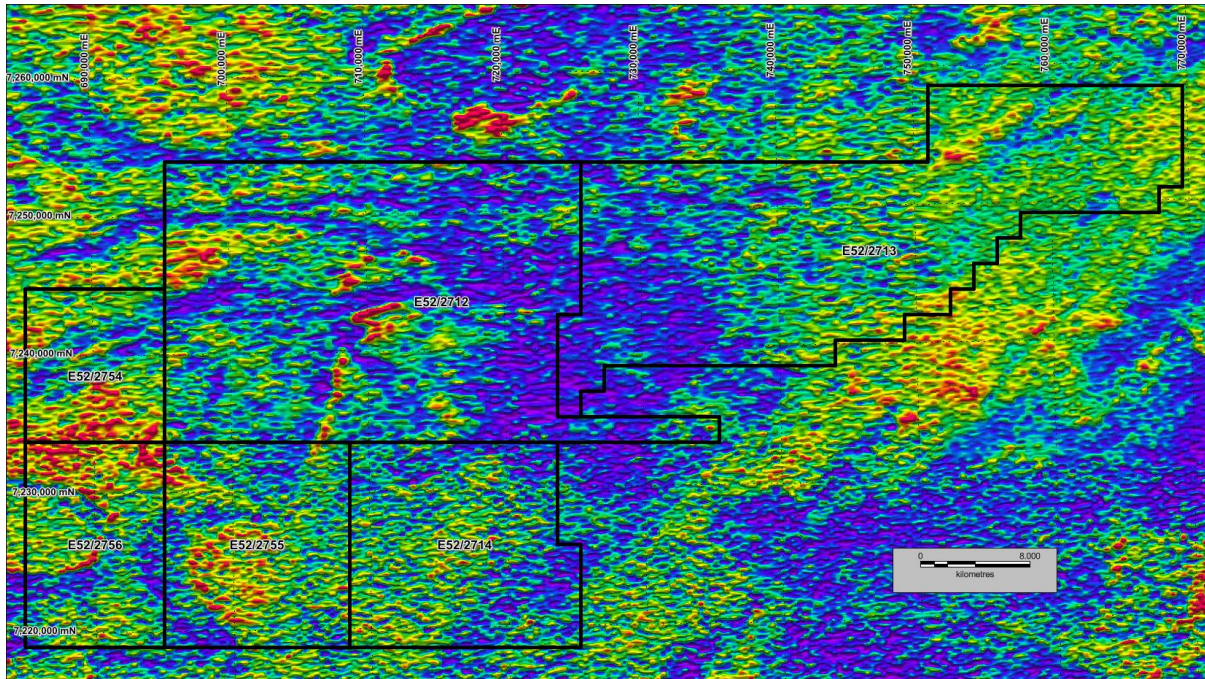


Colour TMI



Radiometrics TC

Registered Office:
Lvl 1 6 Thelma Street
West Perth WA 6005
Email info@ventnorresources.com.au
www.ventnorresources.com.au
ABN 59 142 014 873



Radiometrics Thorium

HyVista

Ventnor proposes to conduct a HyVista multi-spectral survey to focus future exploration in the area. The project area is eminently suitable for HyVista as it is large, contiguous, and with sparse vegetation. The survey is conducted by non-surface-disturbing aerial data capture. The aerial mapping exercise has been completed and data processing is underway. Field work to verify the HyVista will be conducted in the September quarter.

HyVista remote sensing is a mineral mapping technology which can be used to focus exploration on large areas. Its fundamental principles are based on the spectral signatures of surface materials. Each four-metre pixel of a hyperspectral image contains a spectrum which forms the basis for determining the materials present by interrogating the reflected image. Surface mineralogy and other components are mapped using component signatures or specific target spectral signatures of known materials.

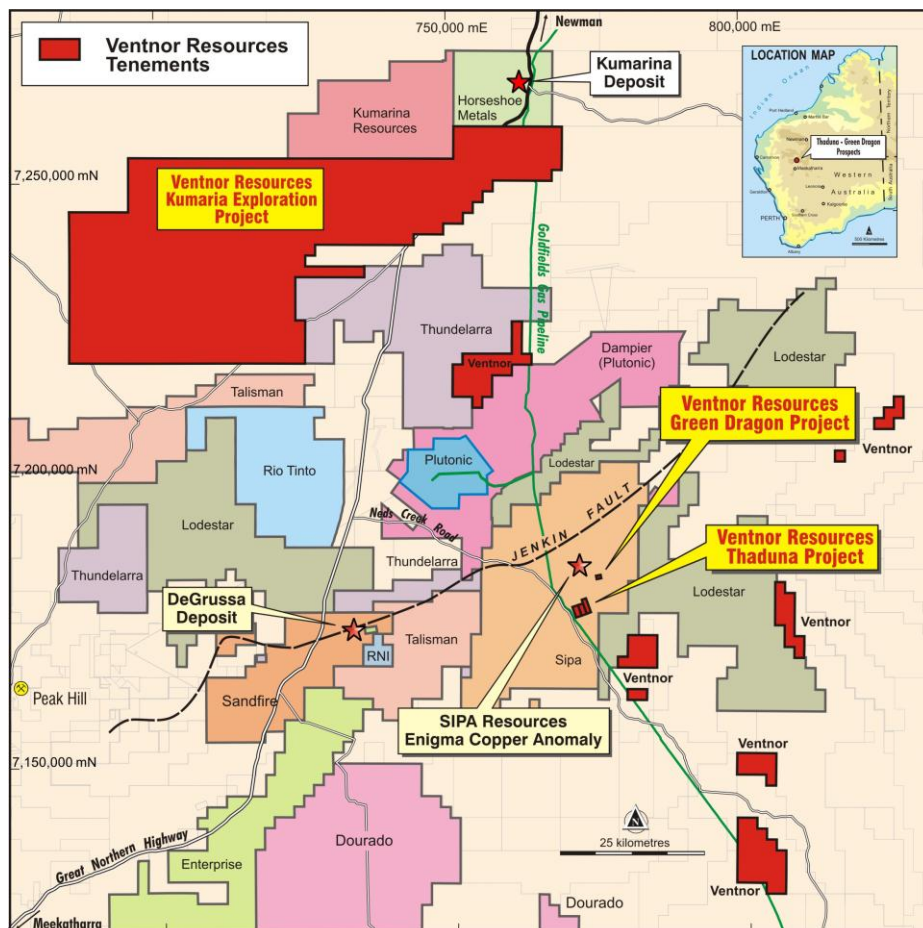
HyVista is an airborne hyperspectral scanner delivering 126 bands of digital imagery over the 450nm to 2500nm spectral interval. The data processing is carried out on a strip-by-strip basis producing radiance, apparent reflectance, and GLT (Geometric Lookup Table) files for later geometric rectification. The reflectance images are cross-track and level corrected and then geo-corrected to position each individual pixel in its accurate geo-location in the UTM/WGS 84 map projection. The corrected strips produce a seamless, homogeneous data map as a mosaic for the whole survey area.

The data can be interrogated for one or a combination of the spectral signatures from a catalogue of over 2,000 minerals down to an individual four-metre pixel. This data can be used to focus exploration to specific selected targets and is a unique tool for exploration over large unexplored areas, such as the Kumarina Exploration Project.

Tenements

The tenements in the Kumarina Project are either granted or applied for Exploration Licenses in the name of Ventnor Pilbara Pty Ltd, a wholly owned subsidiary of the listed entity Ventnor Resources Limited.

Lease	Holder	Lease Manager	Status	Applied Date	Grant Date	Locality	Area (km ²)	Area (blocks)	Mineral Field
E52/2712	Ventnor Pilbara Pty Ltd	Ventnor Resources	Application	5-Aug-11		WA	621	200	52 - Peak Hill
E52/2713	Ventnor Pilbara Pty Ltd	Ventnor Resources	Application	5-Aug-11		WA	571	184	52 - Peak Hill
E52/2714	Ventnor Pilbara Pty Ltd	Ventnor Resources	Application	5-Aug-11		WA	236	76	52 - Peak Hill
E52/2754	Ventnor Pilbara Pty Ltd	Ventnor Resources	Granted	15-Feb-12	29-Mar-12	WA	112	36	53 - Peak Hill
E52/2755	Ventnor Pilbara Pty Ltd	Ventnor Resources	Granted	15-Feb-12	29-Mar-12	WA	199	64	54 - Peak Hill
E52/2756	Ventnor Pilbara Pty Ltd	Ventnor Resources	Granted	15-Feb-12	29-Mar-12	WA	149	48	55 - Peak Hill
						Total	1887		



Ventnor Resources Tenement Status Map of the Doolgunna District

Registered Office:
 Lvl 1 6 Thelma Street
 West Perth WA 6005
 Email info@ventnorresources.com.au
www.ventnorresources.com.au
 ABN 59 142 014 873

Competent Person's Statement

The information in this release that relates to Exploration based on information compiled by Mr David Reid who is a Member of the Australasian Institute of Mining and Metallurgy (MAusIMM). Mr Reid is an employee of Ventnor Resources Limited. Mr Reid has sufficient experience which is relevant to the style of mineralisation and type of deposits under consideration and to the activity which he is undertaking to qualify as a Competent Person as defined in the "2004 Edition of the Australasian Code for Reporting of Exploration Results, Mineral Resources and Ore Reserves". Mr Reid consents to the inclusion in this report of the matters based on information provided by him and in the form and context in which it appears.

For further information please contact:

Bruce Maluish, Managing Director
brucem@ventnorresources.com.au
www.ventnorresources.com.au

Media: Warrick Hazeldine/Karen Oswald
Purple Communications Tel: 08 6314 6300
whazeldine@purplecom.com.au

ABOUT VENTNOR

Ventnor Resources Limited is a base-metals focused explorer.

Ventnor has copper targets at the historic Thaduna/Green Dragon project 170 km north of Meekatharra in Western Australia. Also in Western Australia, 40 km south of Newman, are the Warrawanda and Nickel Hills nickel projects; also held is the Kumarina project which lies 200 km north of Meekatharra. In Western Queensland, the Georgina Basin project lies within the Mt Isa Inlier which is well endowed with Iron Oxide Copper Gold (“IOCG”) systems and sulphide base-metal deposits.

Significant Tenement Holdings

Ventnor has a number of granted tenements and tenement applications. In Western Australia, the Thaduna/Green Dragon granted tenements and applications total 4,216 ha; at Warrawanda/Nickel Hills the area is 11,216 ha; Kumarina totals 1887 sq km. Queensland applications total 2,034 sq km.

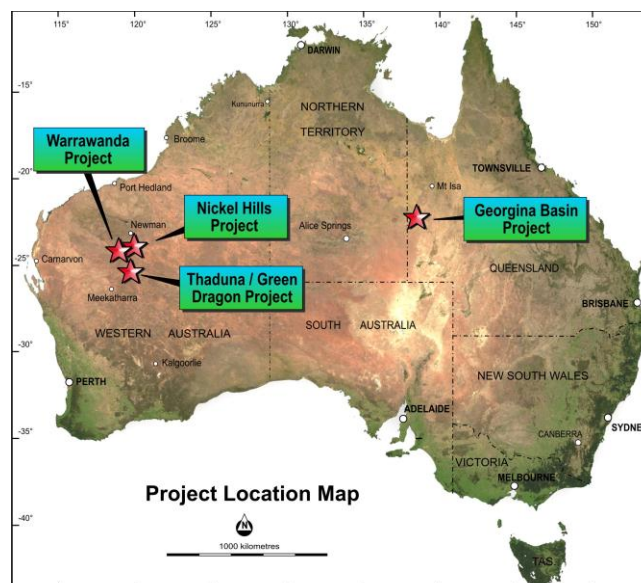
Known Copper and Nickel Mineralisation

The Thaduna/Green Dragon copper project has historic mine production: copper mineralisation has been confirmed with three phases of exploration drilling, with a fourth phase underway. The prospectivity of the Warrawanda and Nickel Hills nickel projects was increased when nickel copper gossans were identified in recent years. A program of 13 orientation holes at Warrawanda has been completed and results announced.

Proven Management

The Ventnor directors have extensive experience in the management of publicly listed mining and exploration companies.

PROJECT LOCATIONS



Registered Office:
 Lvl 1 6 Thelma Street
 West Perth WA 6005
 Email info@ventnorresources.com.au
www.ventnorresources.com.au
ABN 59 142 014 873