



NEWERA  
uranium  
LIMITED

NEWERA  
uranium  
LIMITED

An Emerging Australian Uranium Company

July 2006

## Management & Capital Structure



Mark Maine

Non-Executive Chairman

Martin Blakeman

Managing Director

Greg Miles

Non-Executive Director

ASX Listed 19 June 2006 @ 20c; trading 21 July @ 32c

CLASS	SHARES	%	ESCROWED
Pre IPO	11.7m	31.9%	Partially
Vendor	10.0m	27.2%	6mths, then in specie
Public	15.0m	40.9%	Tradeable
<b>TOTAL</b>	<b>36.7m</b>	<b>100%</b>	

OPTIONS	NUMBER	EXERCISE PRICE	EXERCISE DATE
25c	2.0m	25c	31 Dec 2009

# WHY URANIUM?

## Australian Uranium Mining

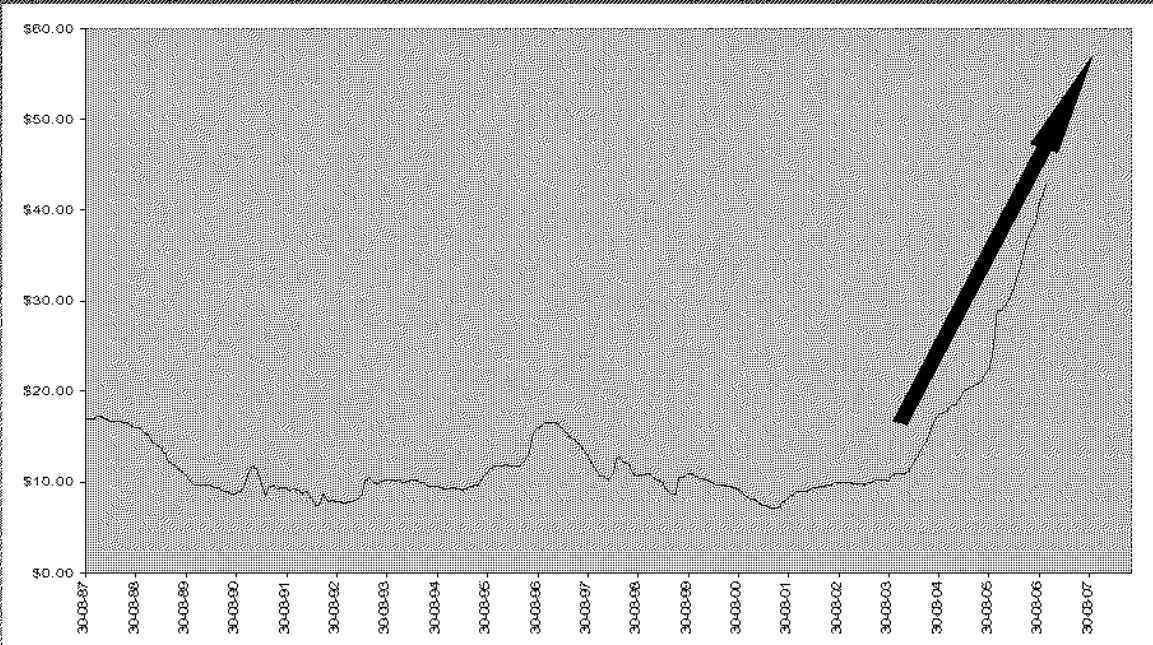
newera  
uranium  
LIMITED

- Aust has world's largest U reserves ~ 40%
- 3 operating mines:
  - Ranger (NT)
  - Beverley (SA)
  - Olympic Dam (SA): largest known U orebody in the world & operation under expansion
- 2005: Export record 12,360t, value \$573m

Source: What is this thing called uranium, (2006, Vol. 11, Number 6) *The Mining Chronicle*, P.88

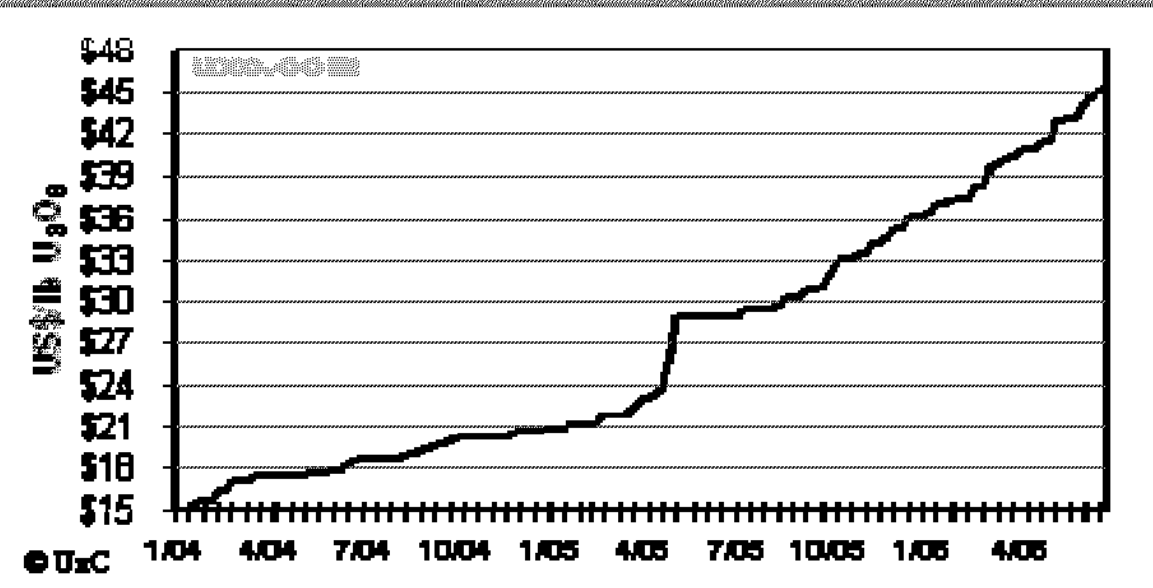
Howard sets the agenda for the uranium debate 'we must have', (2006, Vol. 11, Number 6) *The Mining Chronicle*, P.1 & 3.

# U Spot Prices (\$US/lb)



Last 20 years

Tight supply +  
strong demand =  
escalating U price



Last 2 years



## Political Landscape

newera  
**uranium**  
LIMITED

- Federal Government (Liberal) strong indications pro-U mining
- State Governments (Labor) regulate State mining
- Labor currently opposes new U mining

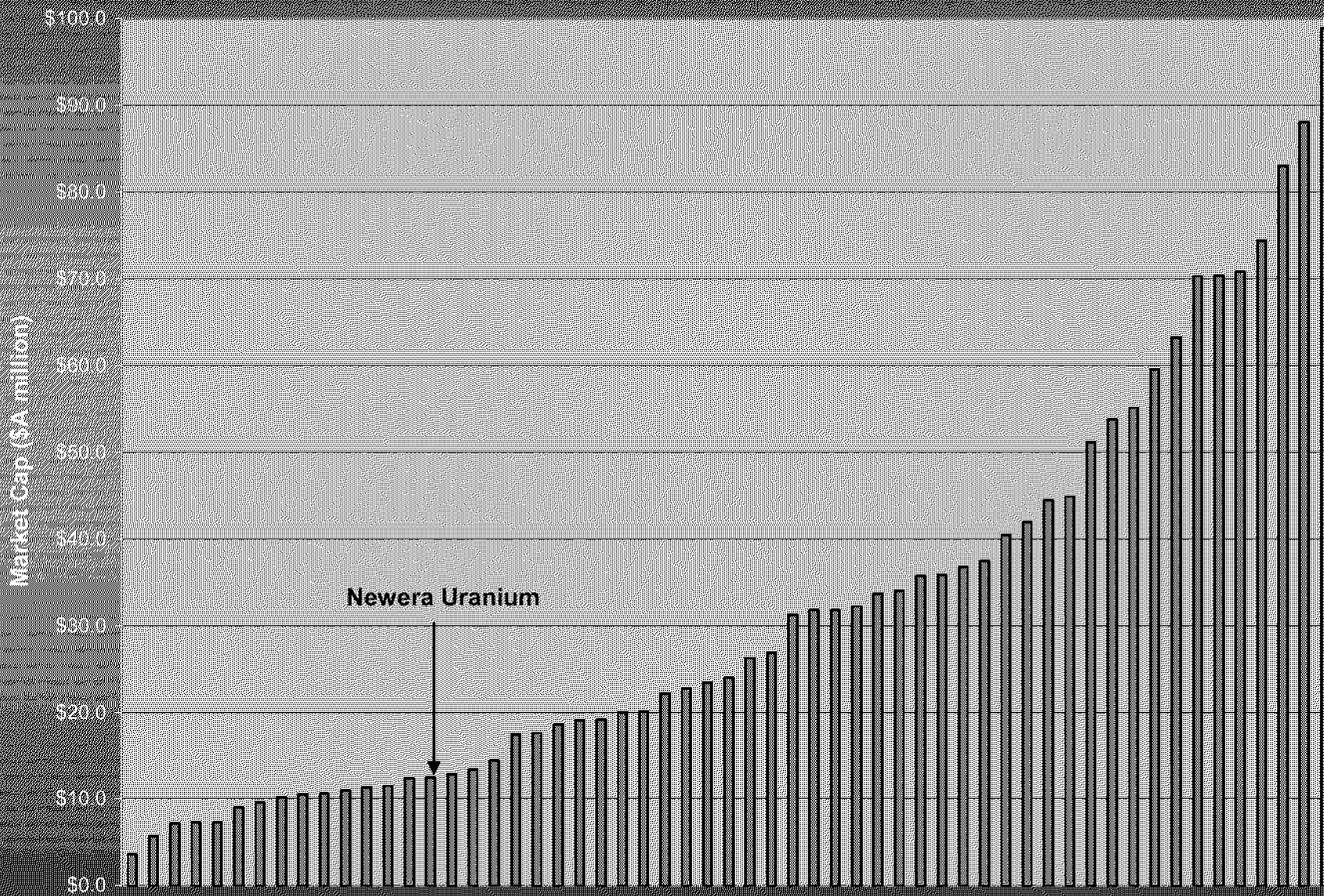
**But,**

- Labor allows 3x working mines & supports U exporting

**Review and debate by both parties imminent**

# WHY NEWERA?

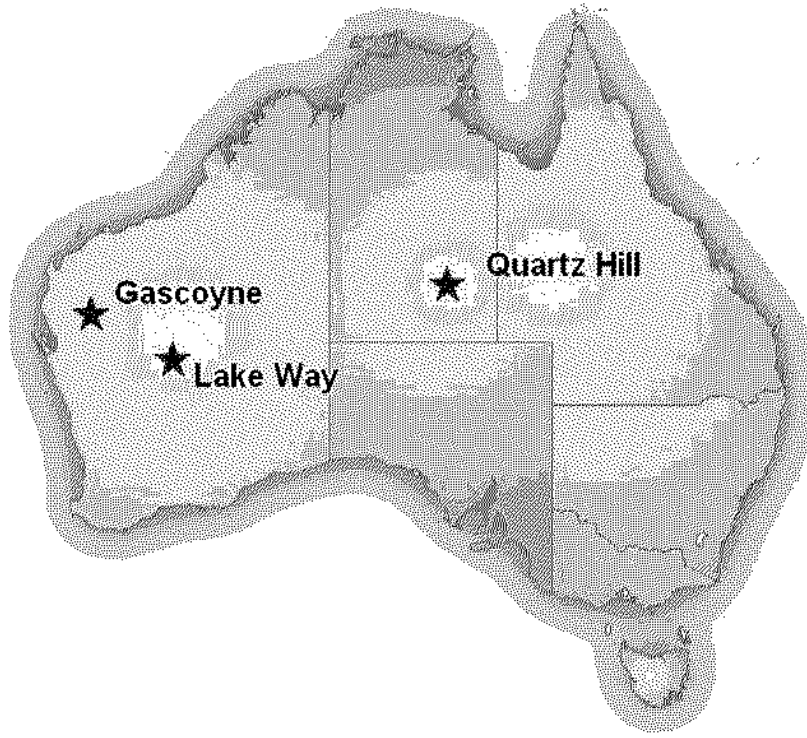
# Market Cap: ASX Uranium Companies <\$A100M



Data as at 05/04/06 except NRU as at 18/07/06

## Current Projects

newera  
**uranium**  
LIMITED



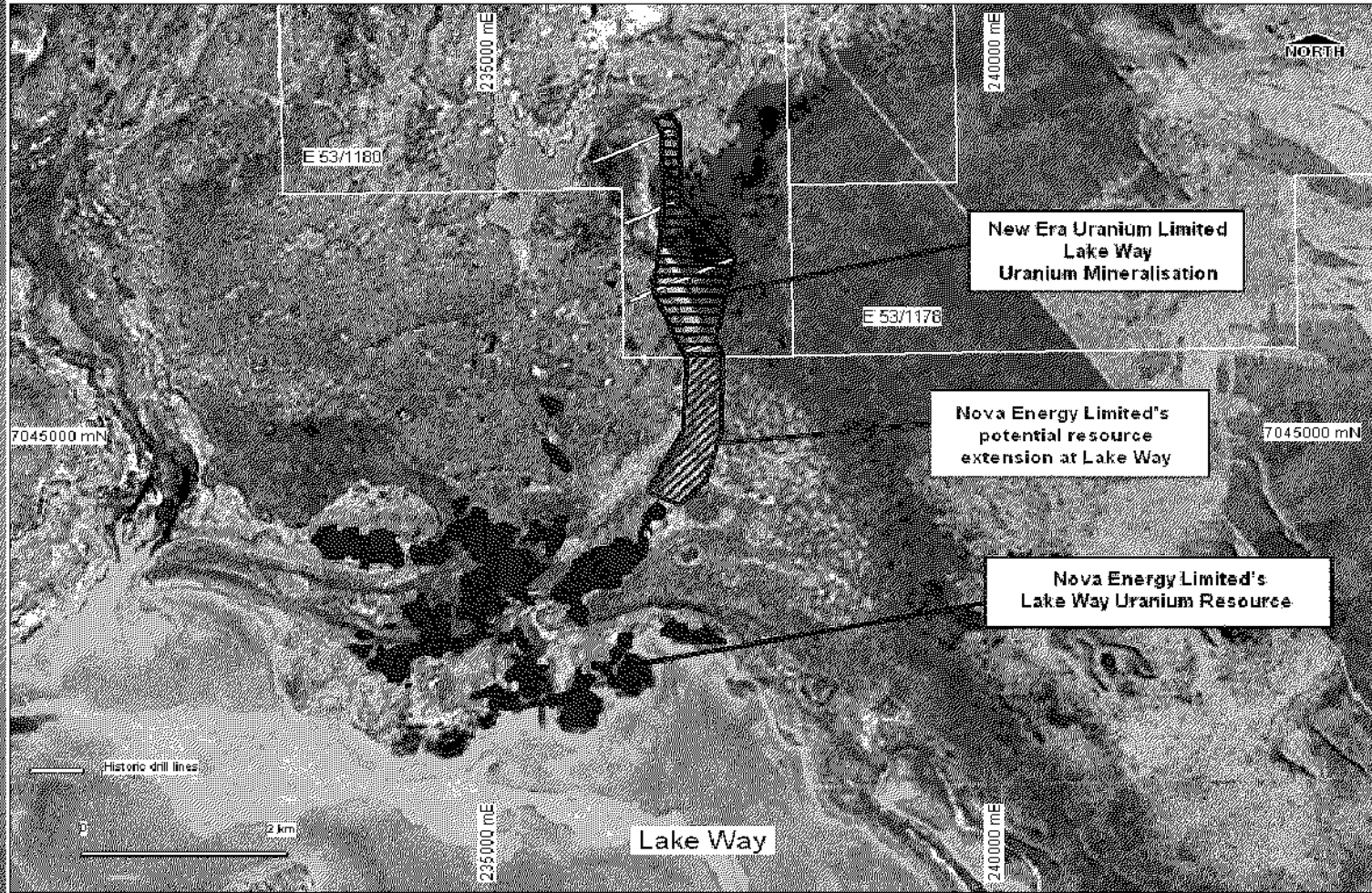
1. Lake Way (WA)
2. Quartz Hill (NT)
3. Gascoyne (WA)

### Deal Terms – Each Project

- 35% initial interest upon grant
- \$1m spend on each to earn additional 45% = 80% total
- 2% FOB royalty to CAZ

## Project 1: Lake Way (WA)

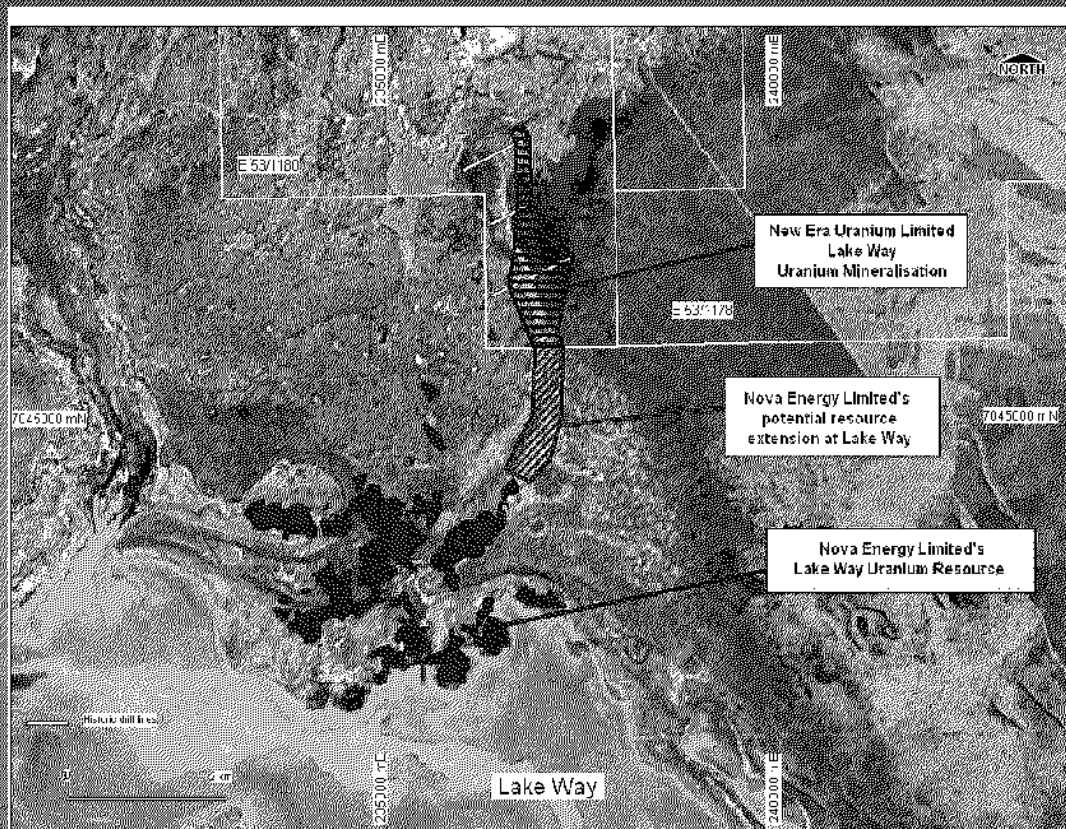
newera  
**uranium**  
LIMITED



- Significant holding (197km<sup>2</sup>) in area known to hold world class U deposits
- South boundary neighbours Nova Energy's potential northern extension
- U mineralisation identified by Newera on EL53/1180

## Project 1. Lake Way (WA) cont.

newera  
**uranium**  
LIMITED



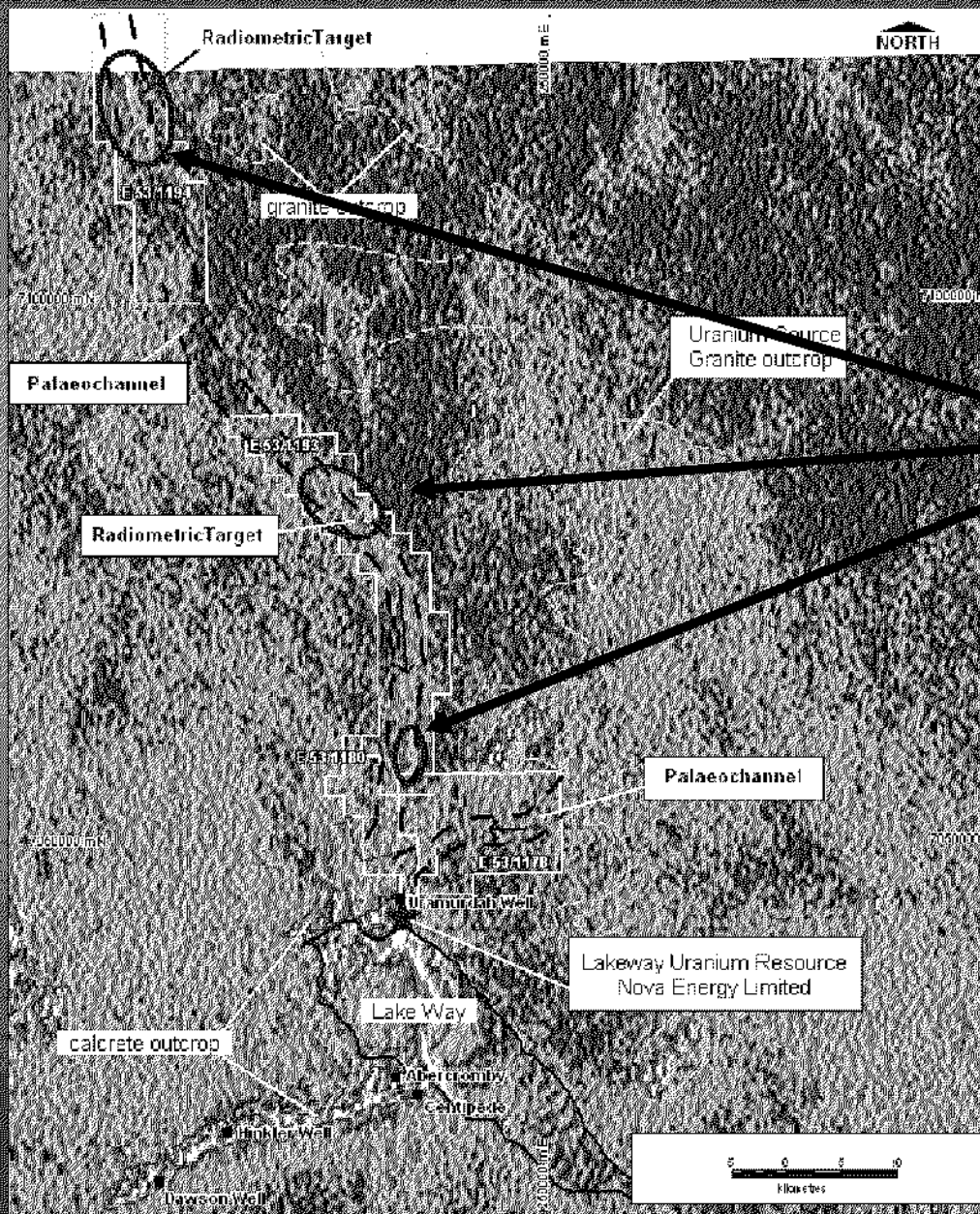
Nova Energy's results of recent scoping on Lake Way & Centipede projects.

Per annum -

- Mining rate: 1.5mt
- Production rate: 750t U @ current spot A\$62/lb
- Operating cash flows: ~\$56m

Exciting potential for Newera (toll treatment &/or corporate play)

# Project 1. Lake Way (WA) cont.

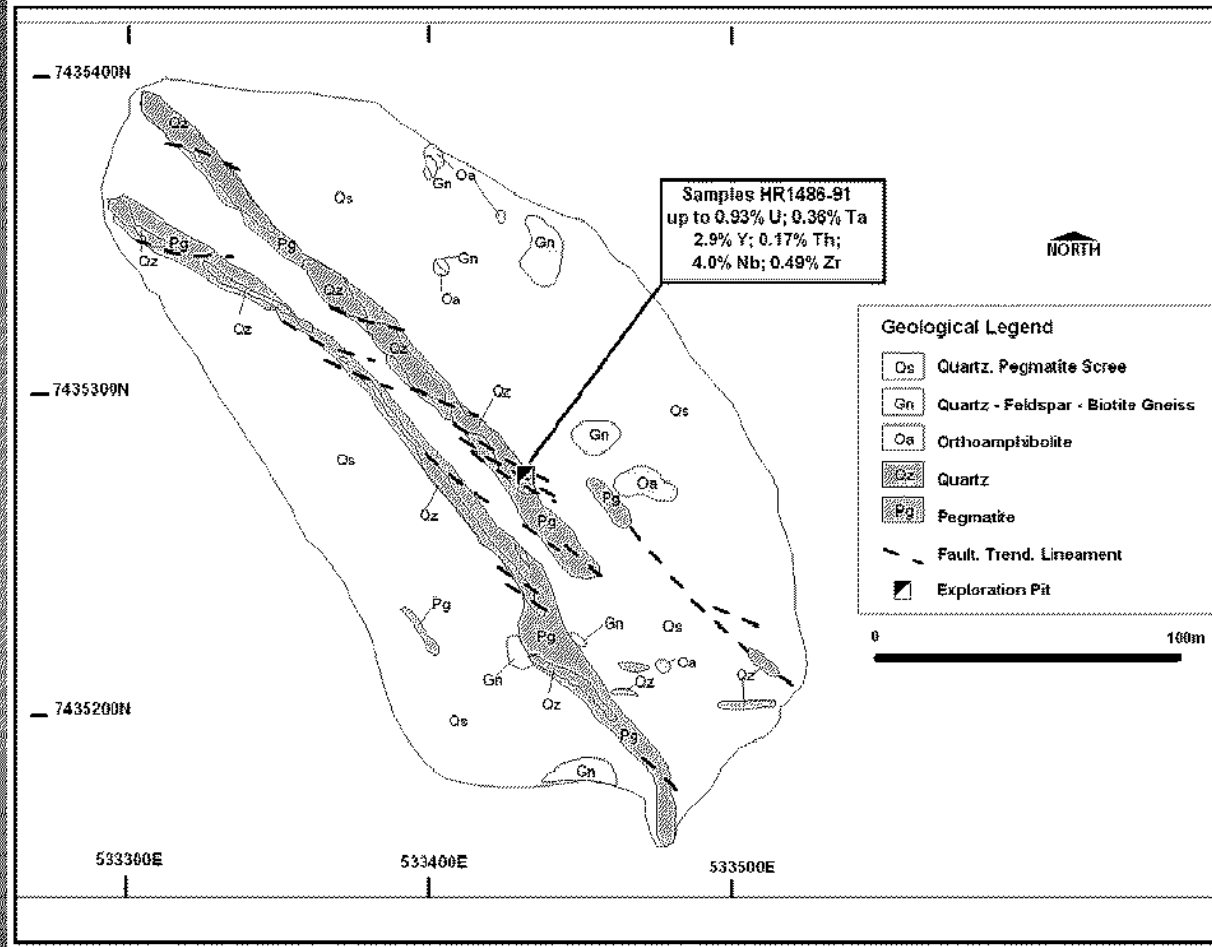


## Lake Way - northern area

- Palaeochannel extends north 40km+ from Nova's deposit
- Several radiometric anomalies with potential to host significant U
- Refine targets and drill test

## Project 2. Quartz Hill (NT)

newera  
uranium  
LIMITED



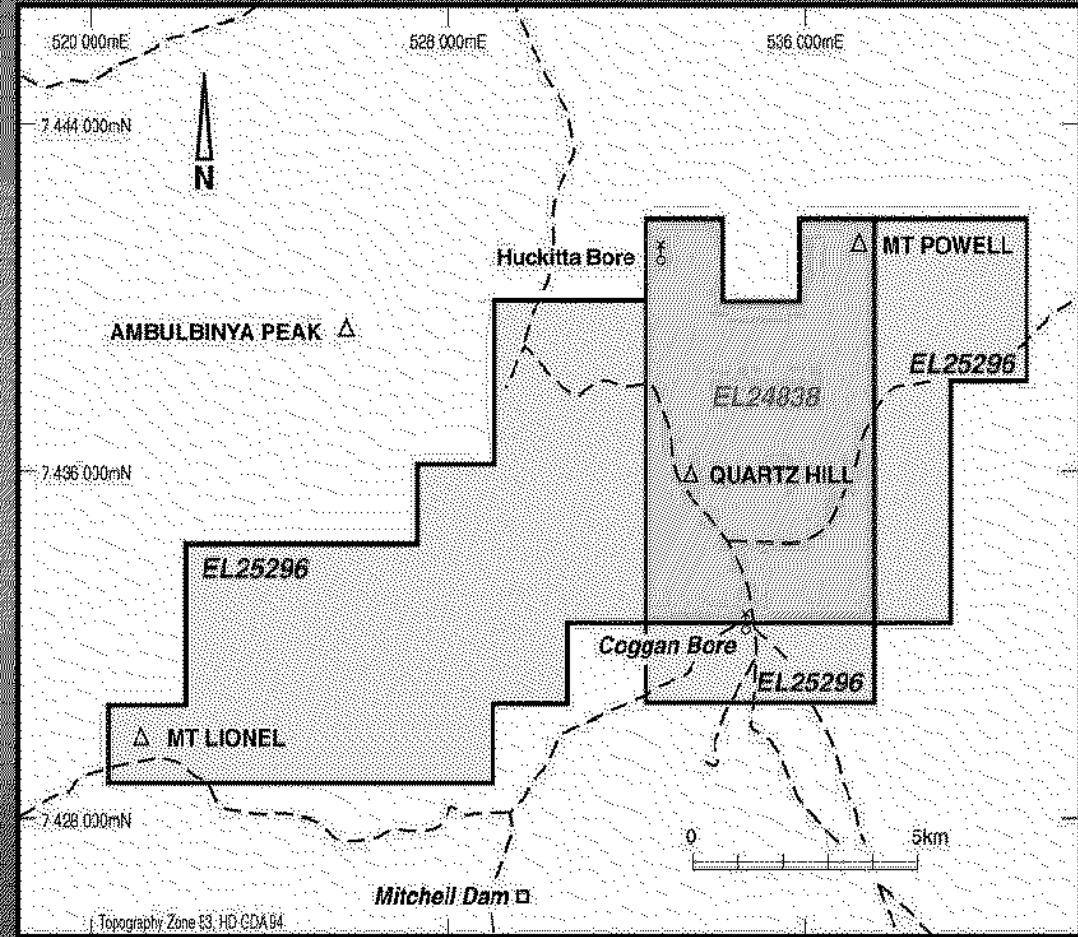
- Outcropping uranium rich pegmatites
- U mineralisation: potential hard rock hosted
- Prior chip sampling: assays up to 9.30 kg/t U (i.e 0.93%)

## Project 2. Quartz Hill (NT) cont.

newco  
**uranium**  
LIMITED

# New Tenement

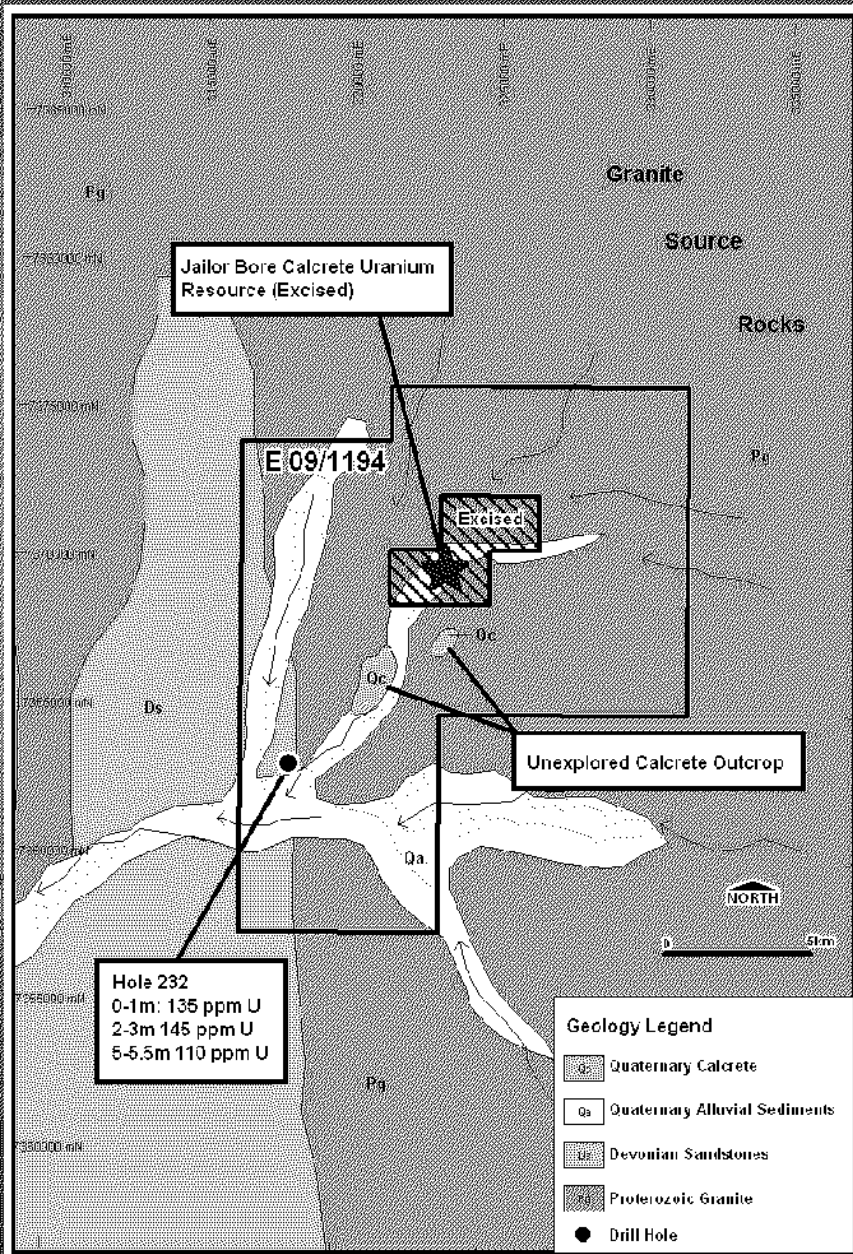
- Post listing acquisition
- Trebled initial landholding
- Identified pegmatites similar to EL 24838
- Rock chip samples of 11.8% & 6.8% U (high)



# Project 3. Gascoyne: Jailor Bore & Pells Range (WA)

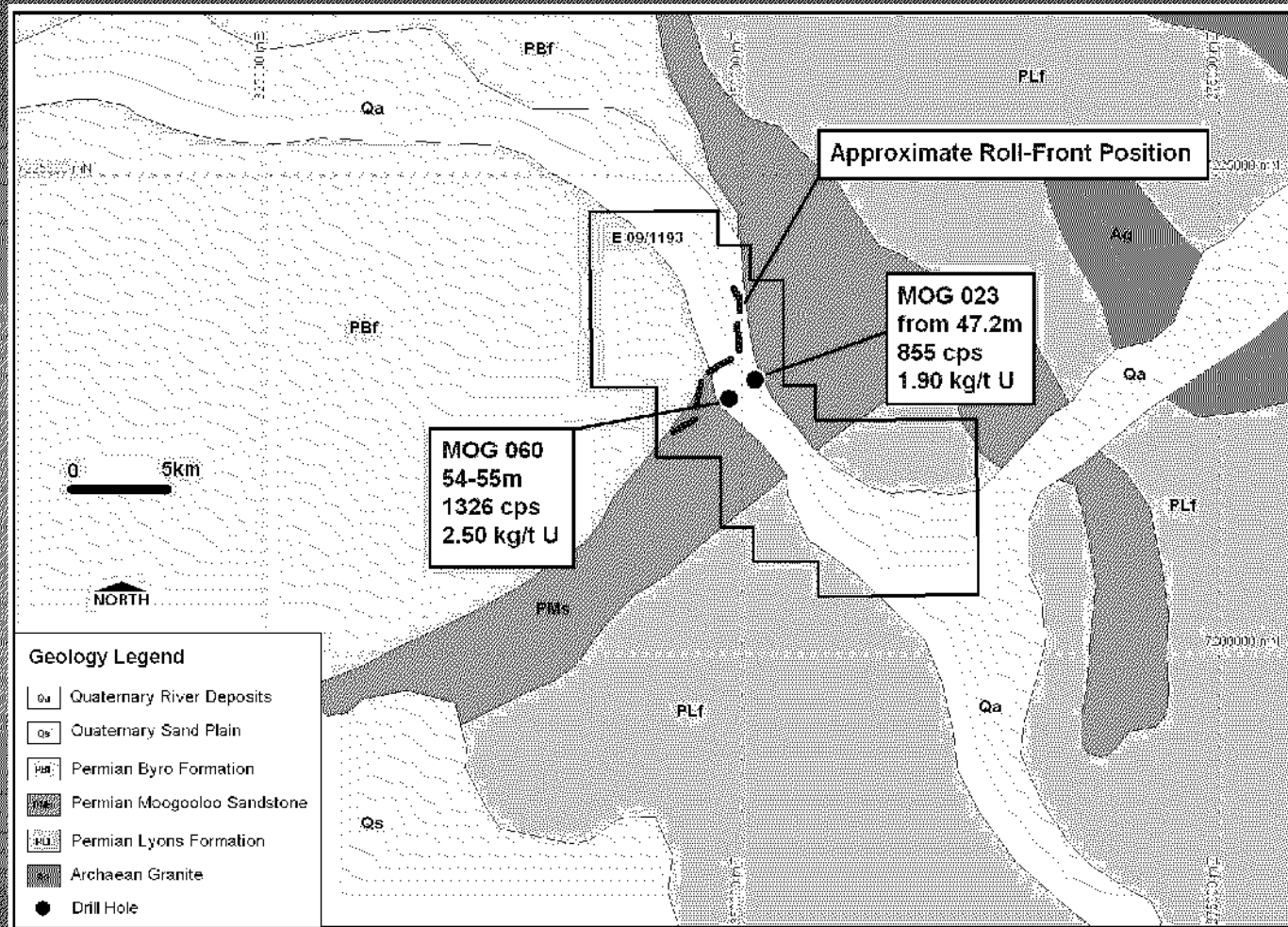
## Jailor Bore prospect

- Early stage exploration
- U mineralisation: Calcrete-hosted
- Surrounds excised U resource



## Project 3. Gascoyne: Jailor Bore & Pells Range (WA)

newco  
**uranium**  
LIMITED



**Pells Range  
prospect**

- Early stage exploration
- U mineralisation: Sandstone-hosted
- Prior drilling: intersected 1m @ 2.5kg/t (i.e 0.025% U)

## Work Programs

newera  
**uranium**  
LIMITED

### Projected exploration activity for the 3 projects:

#### 1. Lake Way (WA)

- Currently sampling calcrete outcrops
- Refine targets, then drill test

#### 2. Quartz Hill (NT)

- Shortly commencing extensive outcrop rock chip sampling
- Refine targets, then drill test

#### 3. Gascoyne (WA): Jailor Bore & Pells Range

- Target generation at each site

Plus pursuing corporate opportunities within Australia & overseas



## Tenement Schedule

newera  
**uranium**  
LIMITED

<b>Project Name</b>	<b>Tenement</b>	<b>Area</b>	<b>Expenditure Commitment</b>	<b>Status</b>
Gascoyne	E 09/1193	70	\$63,000	Grant
Gascoyne	E 09/1194	67	\$60,300	Grant
Lakeway	E 53/1178	46	\$41,400	Grant
Lakeway	E 53/1180	17	\$20,000	Grant
Lakeway	E 53/1193	70	\$63,000	Grant
Lakeway	E 53/1194	57	\$51,300	Grant
Quartz Hill NT	EL 24838	14	\$15,000	Grant
Quartz Hill NT	EL 25296	33	\$15,000	Application
<b>TOTALS</b>		<b>374</b>	<b>\$329,000</b>	

## Reasons to Buy Newera

newera  
uranium  
LIMITED

1. Good exposure to rising U market
2. Experienced, corporately active management
3. 'Tight' Capital Structure (<37m shares on issue)
4. Current shareholder entitlement: 1 for 2 rights issue of options, XP: 25c to be listed (Record date: 7 August)
5. 3x projects, highly prospective U tenements, 7 granted
6. Exploration programs underway

