

Investors Presentation

August 2021



For accessible version of this presentation click [here](#)

Disclaimer

This presentation contains general data and information as well as forward looking statements about Axilion Smart Mobility ("Axilion"). Such statements, along with explanations and clarifications presented by Axilion's representatives, include expressions of management's expectations about new and existing programs, opportunities, technology and market conditions. Although Axilion believes its expectations are based on reasonable assumptions, these statements are subject to numerous risks and uncertainties. These statements should not be regarded as a representation that anticipated events will occur or that expected objectives will be achieved. In addition, the realization and/or otherwise of the forward looking information will be affected by factors that cannot be assessed in advance, and which are not within the control of Axilion, including the risk factors that are characteristic of its operations, developments in the general environment, external factors, and the regulation that affects Axilion's operations. This presentation contains partial information from the public reports of Axilion under the Israeli Securities Law 5728-1968 (the "Securities Law"), which reports can be accessed at the Israeli Securities Authority's website, www.magna.isa.gov.il. A review of this presentation is not a substitute for a review of the detailed reports of Axilion under the Securities Law and is not meant to replace or qualify them; rather, the presentation is prepared merely for the convenience of the reader, with the understanding that the detailed reports are being reviewed simultaneously. No representation is made as to the accuracy or completeness of the information contained herein. The information included in this presentation is based on information included in Axilion's public filings. However, some of the information may be presented in a different manner and/or breakdown and/or is differently edited. In any event of inconsistency between Axilion's public filings and the information contained in this presentation, the information included in the public filings shall prevail. In addition, this presentation includes references to public data about the market in which the company operates, and these are presented for convenience and do not constitute a binding source. The information contained in this presentation or which will be provided orally during the presentation thereof, does not constitute or form part of any invitation or offer to sell, or any solicitation of any invitation or offer to purchase or subscribe for, any securities of Axilion or any other entity, nor shall the information or any part of it or the fact of its distribution form the basis of, or be relied on in connection with or relating to any action, contract, commitment or to the securities of Axilion. The presentation does not constitute a recommendation or opinion or substitute for the discretion of any investor.

Our People



Danny Bachar

CEO



John D. Porcari

President Axillion US



Dr. Orly Avner

Head of Research



Dani Daniel

Principle Engineer -
AI Specialist



Ilan Weizman

CTO & Co-Founder



Sigal Barak

Head of Marketing



Oriel Raveh

VP Product



Elad Nadri

VP Sales Development



Didier Lerer

GM Business Development



Moshe Fink

CFO



Ami Barlev

Active Chairman

Our Mission

Redesign today's transportation systems to create a
cleaner, safer, congestion-free world

Our Vision

We aim to be the go-to platform for continuous optimization processes and tools for businesses and governments to gradually reduce carbon footprint & congestion derived from the challenges created by mobility and traffic.

Problem Space In Figures Mobility

~11B Hours

US citizens spent in
traffic every year

6 Million

Car accidents
happens every year
resulting in ~
90 deaths/day

4.6 Tons

of carbon dioxide /
Year is emitted by one
passenger car on average

Problem Space- Traffic Engineering

Bird's Eye

- Time-consuming & Non-scalable process.
- Open-loop process.
- No ability to simulate the collateral affect.

Traffic Engineering Perspective

- Planning and optimizing are done once in 5-10 years
- Traffic counts are collected manually and not in real-time
- Simulation tools are used only in 10%-15% of the projects



* Based on interviews, observations, and mutual work with traffic engineers along the history of the company .

What Do We Do?



Process videos from onboard & static cameras, utilizing contextual AI



Create a Mobility Digital Twin of a city/state calibrated by our AI engine



Predict, plan, & optimize mobility to reduce carbon emissions, congestion, and increase safety

Our Solution

The leading Mobility Digital Twin Platform

- ✓ Safety
- ✓ Service Level
- ✓ Congestion
- ✓ Environment

System Modules

Twin

Simulate & predict road-network conditions & “what if” scenarios

Pulse

Capture & visualize
your road-network
through IoT Edge Cameras



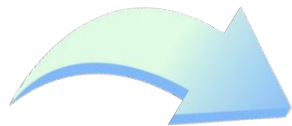
Neural

Plan & implement the best
possible outcome & create
a continuous optimization
protocol leveraging
Reinforcement Learning

Market Drivers

Currently, 55% of the world's population lives in urban areas and this is projected to rise to 68% by 2050 according to the UN

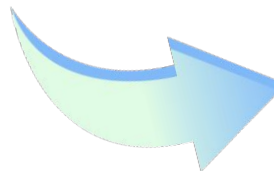
European Strategy for low-emission mobility



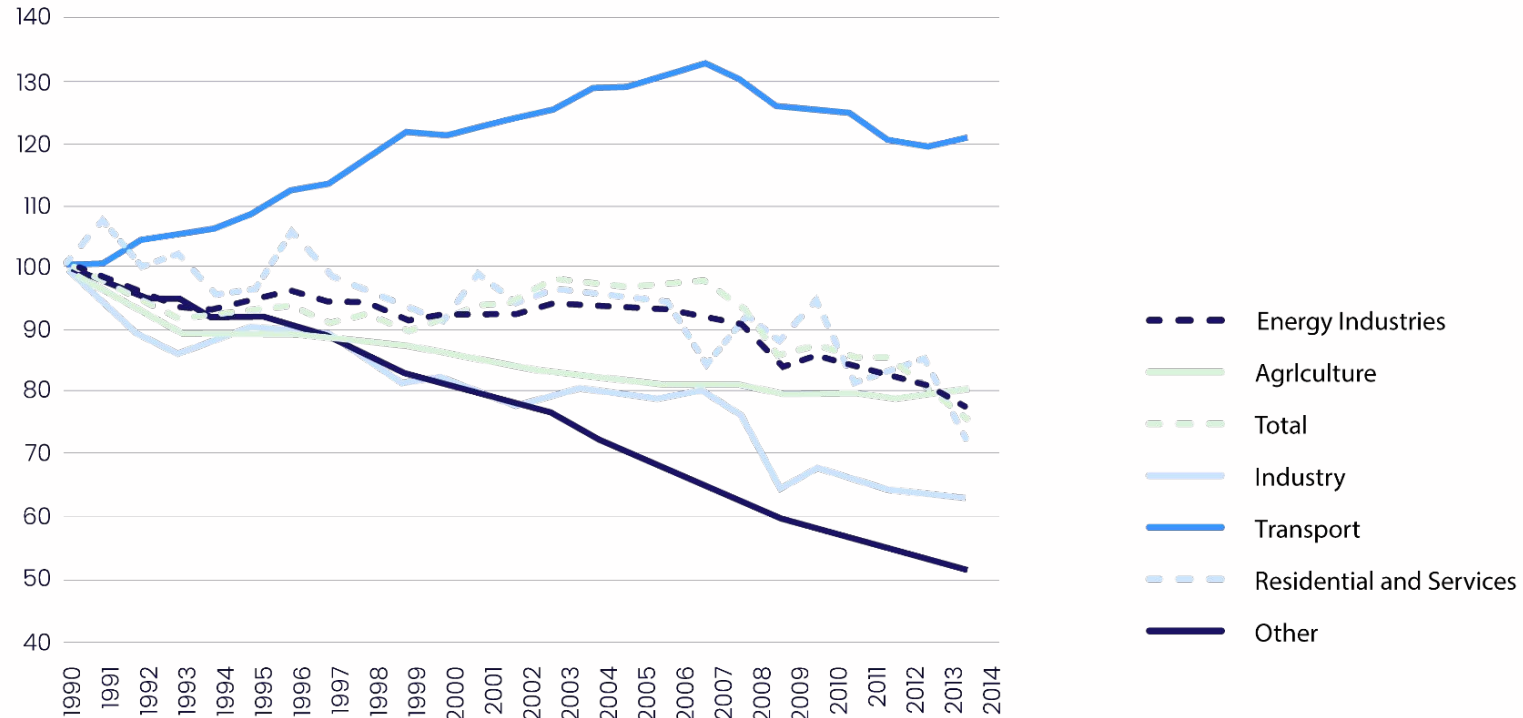
Transport represents almost a quarter of Europe's greenhouse gas emissions and is the main cause of air pollution in cities

Emissions of air pollutants from transport that harm our health need to be drastically reduced without delay.

The strategy will benefit European citizens and consumers by delivering improvements in air quality, reductions in noise levels, lower congestion levels and improved safety.



- ✓ Increasing the efficiency of the transport system
- ✓ Speeding up the deployment of low-emission alternative energy for transport
- ✓ Moving towards zero-emission vehicles



Emissions only started to decrease in 2007 and still remain higher than in 1990

Carbon Crisis Solution & Market Trends

“this research shows that in 2013 the early-stage venture funding for climate tech companies was about \$418 million. However, in 2019, total venture funding increased to \$16.1B, a more than 3750% increase. This is on the order of 3X the growth rate of VC investment into AI, during a time period renowned for its uptick in AI investment.”

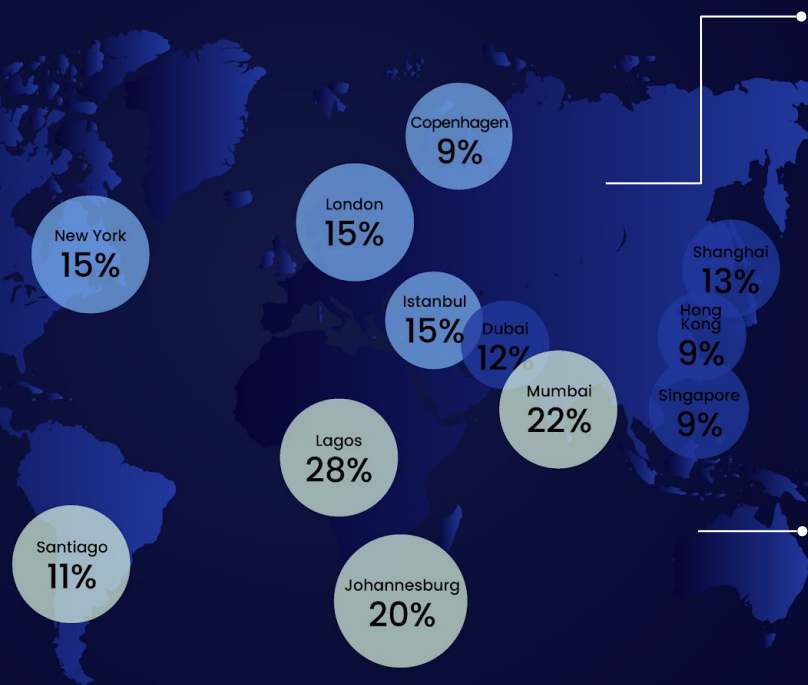


Market Drivers

“The leading cities are already achieving this with efficient transport networks that feature modern infrastructure, easy connections across various modes of transportation, and, above all, a clear strategy of how to meet future needs”

Today's economic cost of transport as a percentage of GDP per capita

■ Well establish cities ■ High density compact cities ■ Emerging cities



Investing in efficient public transport system can boost economic growth up to US\$800 billion

the costs of inefficient transport are influenced by factors such as journey times, crowding and density of the transport networks, which impact a city's productivity.

Market Drivers

Transportation demand and emissions continue to rise:



100%

Increase in global
transport activity

By 2050



24%

of global emissions
come from transportation

2020

Intelligent transportation and green tech markets are growing:



\$36.5B

Intelligent Transportation
Systems (ITS) CAGR of 15.3%

by 2025



\$230B

Global Carbon Market
growing in 20% rate

In 2020

What has been done so far?

01

Pulse - City & Highway
mode - ready to pilot

03

Neural - Advanced
optimization engine -
In development

02

Digital Twin - Simulation &
Optimization in design partnership -
Jerusalem Optimization engine - first version

Pilot Status

Pilot	Description	Status	Expected completion date
Jerusalem	Simulation of the rabin corridor during morning rush hours in order to reduce congestion and carbon emission	Conducting field tests to validate and calibrate the simulation model	Q1 2022
Bolzano (Italy)	X Way Pulse module was implemented in collaboration with Microsoft and Vetrya (Local Partner & Integrator)	About to commence commercial negotiations with the local municipality and strategic partners	Q1 2022
Target City (France)	Implementation of the X Way Pulse module in collaboration with Transdev <i>** This project constitutes a relocation of a previous pilot, in accordance with the decision of the parties</i>	Finalizing SOW with Transdev, scoping the relevant corridor and intersections which will be part of the pilot and the relevant KPIs.	Q2 2022

The company currently manages a number of pilots at various stages and has also received inquiries to carry out additional pilots that are being examined by it.

Research & Development Status

Product	Description	Development Stage	Expected Completion Date
TransEm	Traffic engineering software designed for Signal planning with transit signal priority (TSP), and pedestrians priority	Version 8.1 of the software is now available for purchase, approved by the ministry of transportation in Israel valid until the 21.1.2022. on the 11.7.2021 the company filed for approval extension. The Jerusalem municipality has requested additional features which have been developed, and will be included in future version which will be submitted for approval as well.	In Production The software is being used by the Jerusalem light rail, Haifa Metronit (BRT), and by Traffic Engineers.
X Way Pulse	Monitoring and identification of bottlenecks in traffic signal network	The software module is under testing, and being piloted, based on feedback and module behavior additional R&D activity may be required	Q4 2021
X Way Twin	The Digital Twin module enables the simulation of selected signalized corridors and provides green light optimization recommendation. The module's calibration is achieved by infusing data sources such as traffic counts, and Origin-Destination (OD) Matrix received from the pulse and other data sources	The Digital Twin module is in advanced development stages focusing on calibration and validation.	Q1 2022
X Way Neural	Prediction and recommendation system provides an alternative traffic signal plans for entire corridors, based on dynamic measurement of current demand levels, vehicle type, road capacity and driving profile of the road users.	Product characterization and requirements specification	2023

*The expected completion date refers to the development stages mentioned in the table on column 3

Going Forward

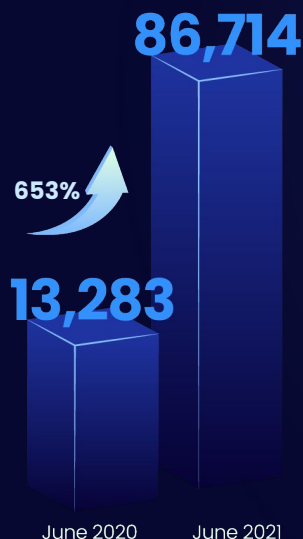
- Expanding strategic partnerships
- New marketing initiatives
 - New marketing collateral
 - Preparing for conference
 - Rebranding
- Exploring new opportunities
- Exploring new market landscape
- Implementing new cross company processes
to support day 2 day operation, support current
pilot and setting foundation for scale

*The foregoing constitutes forward-looking information as defined above, and there is no complete certainty as to its realization.

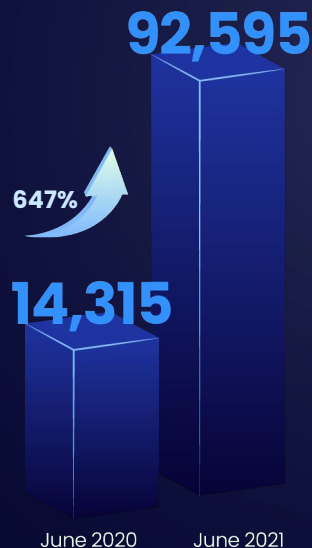
Financials

Q2-2021 Data

Cash and cash
Equivalents
in thousands NIS



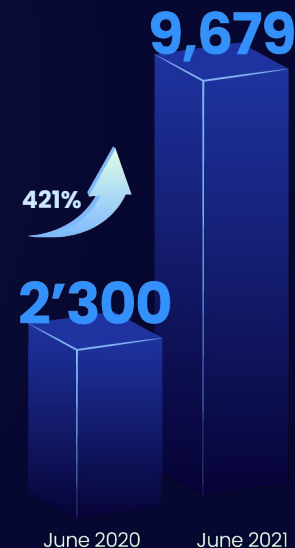
Total Assets
in thousands NIS



Total Equity
in thousands NIS



Total Liabilities
in thousands NIS



Financials

Six-months P&L (unaudited)

	June 2021	June 2020
Revenues	724,349	879,041
Research and development expenses, net	(8,944,752)	(3,730,899)
Administrative and general expenses	(4,284,771)	(2,040,313)
Marketing expenses	(3,862,307)	(457,863)
Loss from operations	(16,580,146)	(5,350,034)

Financials

Q2-2021 Data

- ✓ Revenue for the period from TransEm software license and maintenance in Israel remained flat YoY
- ✓ Performed cost re-allocation focusing additional funds to R&D while reducing overhead (such as cutting the Tel Aviv office spend by 50%)
- ✓ Most of cash reserve is held in short term interest bearing bank deposits
- ✓ Short term foreign currency
- ✓ According to our conservative cash flow forecasts, the current cash reserves will allow us to operate normally in the next foreseeable period



References

- <https://bestlifeonline.com/traffic-commute-times/>
- <https://www.epa.gov/greenvehicles/greenhouse-gas-emissions-typical-passenger-vehicle#:~:text=typical%20passenger%20vehicle%3F-,A%20typical%20passenger%20vehicle%20emits%20about%204.6%20metric%20tons%20of,8%2C887%20grams%20of%20CO2.>
- <https://www.thewanderingrv.com/car-accident-statistics/#:~:text=Annual%20United%20States%20Car%20Crash%20Statistics,-This%20section%20of&text=On%20average%2C%20there%20are%206.in%20automobile%20crashes%20per%20year.>
- <https://www.bbc.com/news/world-europe-56828383>
- https://ec.europa.eu/clima/policies/transport_en
- https://ec.europa.eu/clima/policies/transport_en
- *PwC - the state of climate tech 2020 Report*
- <https://www.eco-business.com/news/cities-efficient-public-transport-highly-attractive-and-competitive-study/>
- <https://www.greencarcongress.com/2021/05/20210519-itf.html>
- <https://ourworldindata.org/co2-emissions-from-transport>
- <https://www.globenewswire.com/news-release/2020/07/23/2066417/0/en/The-Intelligent-Transportation-System-ITS-market-for-roadways-is-expected-to-grow-from-USD-17-9-billion-in-2020-to-USD-36-5-billion-by-2025-at-a-CAGR-of-15-3.html>
- https://www.reportlinker.com/p05816393/Green-Technology-and-Sustainability-Market-by-Technology-Application-Global-Forecast-to.html?utm_source=GNW
- <https://www.edie.net/news/6/Global-carbon-market-grew-20--in-2020/>

Thank You