



SPACE-BASED
INTELLIGENCE
SOLUTIONS.

INVESTORS PRESENTATION

January 30, 2024

DISCLAIMER

The information contained herein is only a summary, does not exhaust all the information about the Company and its Operations, and does not replace a review of the Company's interim consolidated financial statements, Annual Reports and in other information which is filed and furnished with the Israel Securities Authority. Material information regarding the Company which is included in this slide deck has been published to the public in the past as part of the Company's reporting. That said, the information or data presented, may be presented in a different manner and/or segmentation from those previously furnished in the Company's Reports.

The presentation does not constitute or form part of any invitation or offer to invest or purchase the Company's securities and in particular does not constitute an "offer to the public" or "sale to the public" of any kind, the presentation is intended solely for the provision of information included in it and does not constitute a recommendation or opinion or a substitute for the judgment of an investor for any kind of decision and does not pretend to include all the information that may be relevant for the purpose of making any decision regarding the investment in the Company's securities and in general.

This presentation may include forward-looking information as defined in the Securities Law, 1968, including forecasts, goals, business strategy, evaluations and estimates regarding both the Company's activities and the markets in which it operates, as well as any other information, in any form in which it is presented, that relates for future events or matters, the realization of which is uncertain and not under the Company's control. In addition, the images included in this presentation, are for demonstration & illustration purposes only.

Any forward-looking information is based on current estimates and assumptions, among others, by the Company's management, which, although Company believes are reasonable, are inherently uncertain and are partially based on subjective estimates. The realization or non-realization of the forward-looking information will be affected and depended on a variety of factors including, including the risk factors which are inherent to the Company's activity, third party decisions, including regulatory authorities and engagements with third parties, as well as by developments in the economic environment and the external factors which impact the Company's activity, which cannot be assessed in advance and are out of the Company's control. Actual results and achievements of the Company in the future may be materially different from those presented in the forward-looking information presented in this presentation. The Company does not undertake to update or change such a forecast or estimate in order to reflect events and/or reasons that will apply after the date of this presentation and does not undertake to update this presentation.

In addition, the images included in this presentation, are the intellectual property of the company and are included in this presentation as demonstration & illustration for informative purposes only. Any copying or illegal use is prohibited. The images used in this presentation are protected by copyright law.



EROS C3 –
Rio De Janeiro

Industry Leader
In Space-Based
intelligence



A trusted
mission partner
of world leading
defense and
intelligence
customers



Owning Israeli
Assets And
Knowhow

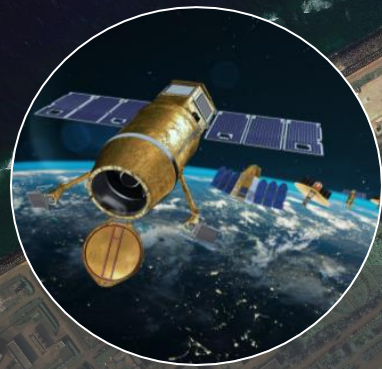


ISI AT A GLANCE



SPACE-BASED
INTELLIGENCE
SOLUTIONS.

COMPANY PRODUCT LINES



SATELLITE SERVICES

- EROS™ Constellation
- GlobalEye™ Constellation
- ClearSky™ GCS



AI & ANALYTICS

- GeoImpact™ Platform
- AI Based Analytics
- Pattern of Life Analysis



INFRASTRUCTURE SOLUTIONS

- Space Segment
- Ground Segment
- Platform & Analytics



SPACE-BASED
INTELLIGENCE
SOLUTIONS.

KEY ACHIEVEMENTS

1 Successful EROS C3 Launch & Commissioning

Class leading, 30cm resolution multi spectral EO satellite

2 \$37.5 EROS B service agreement executed

Strategic 5 year agreement with Customer B, continued long term relationship

3 Excellence in Execution

Successful conversion of backlog to revenues on all contracts

4 Successful RUNNER 1 Launch, Commissioning In Process

First New Space satellite designed and developed by ISI. Major milestone of Chile's SNSAT program

5 Signed Contracts In New Territories

Expanding market reach and presence globally, with three new accounts

6 Progress on Pipeline Conversion

Advanced negotiations towards signing significant 8 digits contracts (among others with customer A).

EROS-C3 Launch

December 2022



WORLD CLASS- LEADING COMMERCIAL SUPER-SATELLITE CONSTELLATION



SPACE-BASED
INTELLIGENCE
SOLUTIONS.

EROS C3 unique MS sensor

Addressing Commercial market

EROS C3 – Las
Vegas, Shpere
Stadium



SPACE-BASED
INTELLIGENCE
SOLUTIONS

1

EROS C3 —
North Korea
Pyongyang City



SPACE-BASED
INTELLIGENCE
SOLUTIONS.

CHILE SNSAT PROGRAM

KEY ACHIEVMENTS TO DATE:

01

National GIS Cloud
infrastructure
deployed

02

SATCOM Solution
fully executed and
delivered

03

National Space-
Excellence
education program

04

RUNNER-FASAT
Delta Launch

SISTEMA
NACIONAL
ESPACIAL



SPACE-BASED
INTELLIGENCE
SOLUTIONS.

A high-resolution satellite image of the Giza Pyramids in Egypt. The image shows the three main pyramids (Great Pyramid, Medium Pyramid, and Small Pyramid) in the center, surrounded by desert terrain with some vegetation and small structures. To the right, there is a dense urban area with many buildings and roads. The image is presented in a true color format, showing the natural hues of the landscape.

RUNNER-
Giza Pyramids,
Egypt

RUNNER 1- New space satellite

Produces world class true color imagery and video



SPACE-BASED
INTELLIGENCE
SOLUTIONS.



• 2X Mil Mi-26



• 2X Mil Mi-17

SIGNED CLIENT B CONTRACT

Continued long term relationship with recent announcement of 5 year \$37.5m contract



SPACE-BASED
INTELLIGENCE
SOLUTIONS.

GEOIMPACT™

Cloud-based analytics
platform



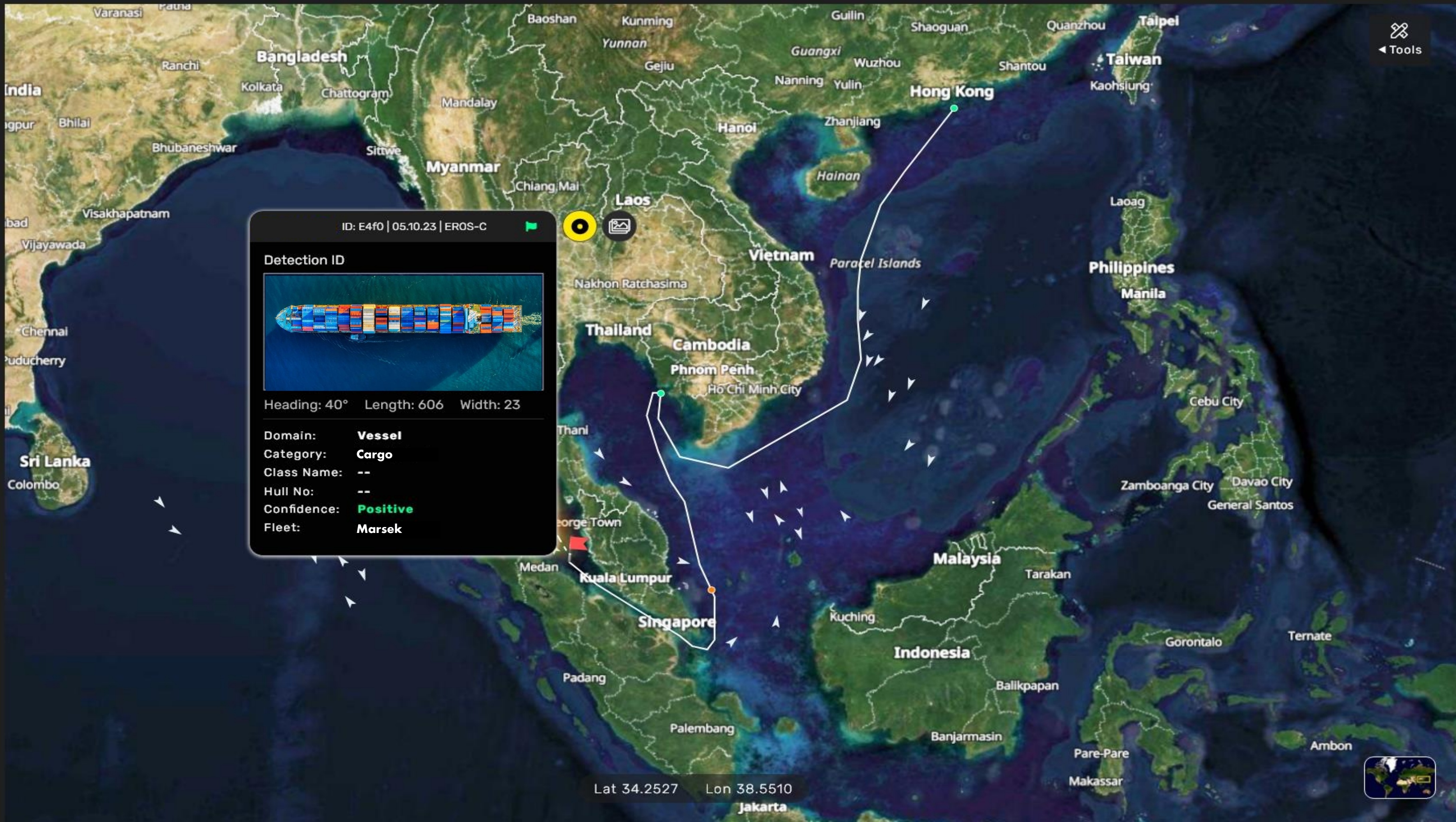
KINGFISHER™

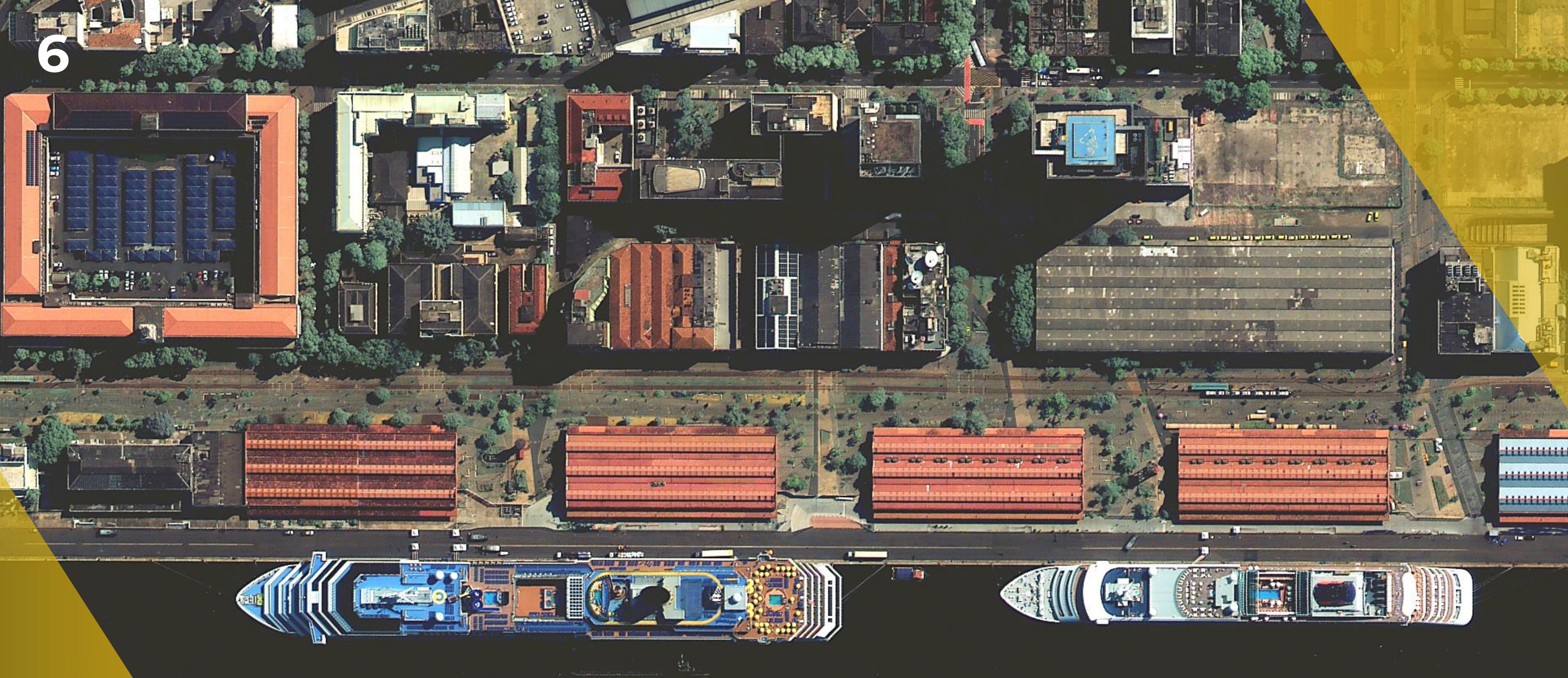
Persistent Maritime
Surveillance





Tools





SETTING SAIL WITH 3 NEW CLIENTS

Expanding market reach and presence globally, with three strategic account



SPACE-BASED
INTELLIGENCE
SOLUTIONS.

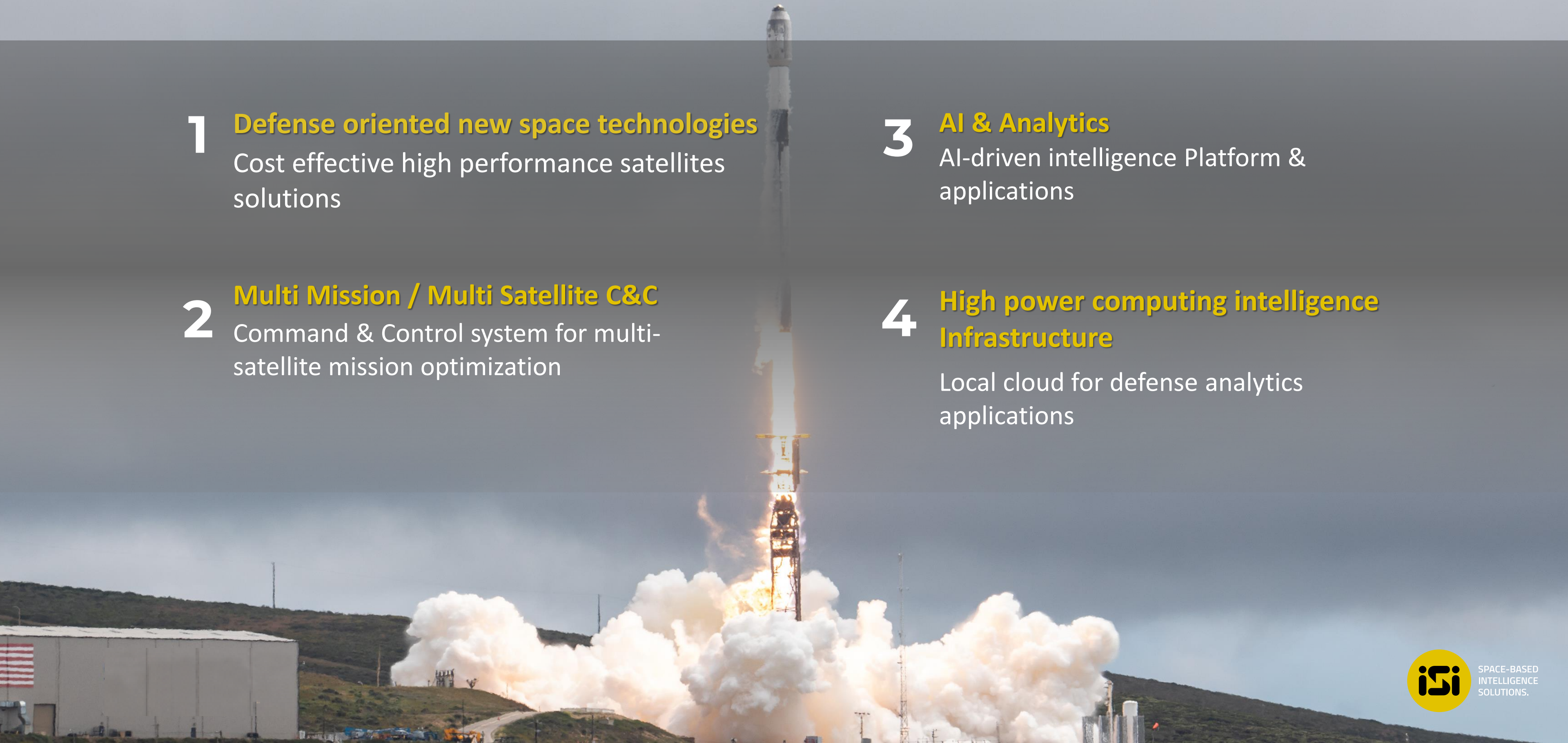
DEDICATED AND EXPERIENCED R&D TEAM

1 Defense oriented new space technologies
Cost effective high performance satellites solutions

2 Multi Mission / Multi Satellite C&C
Command & Control system for multi-satellite mission optimization

3 AI & Analytics
AI-driven intelligence Platform & applications

4 High power computing intelligence Infrastructure
Local cloud for defense analytics applications

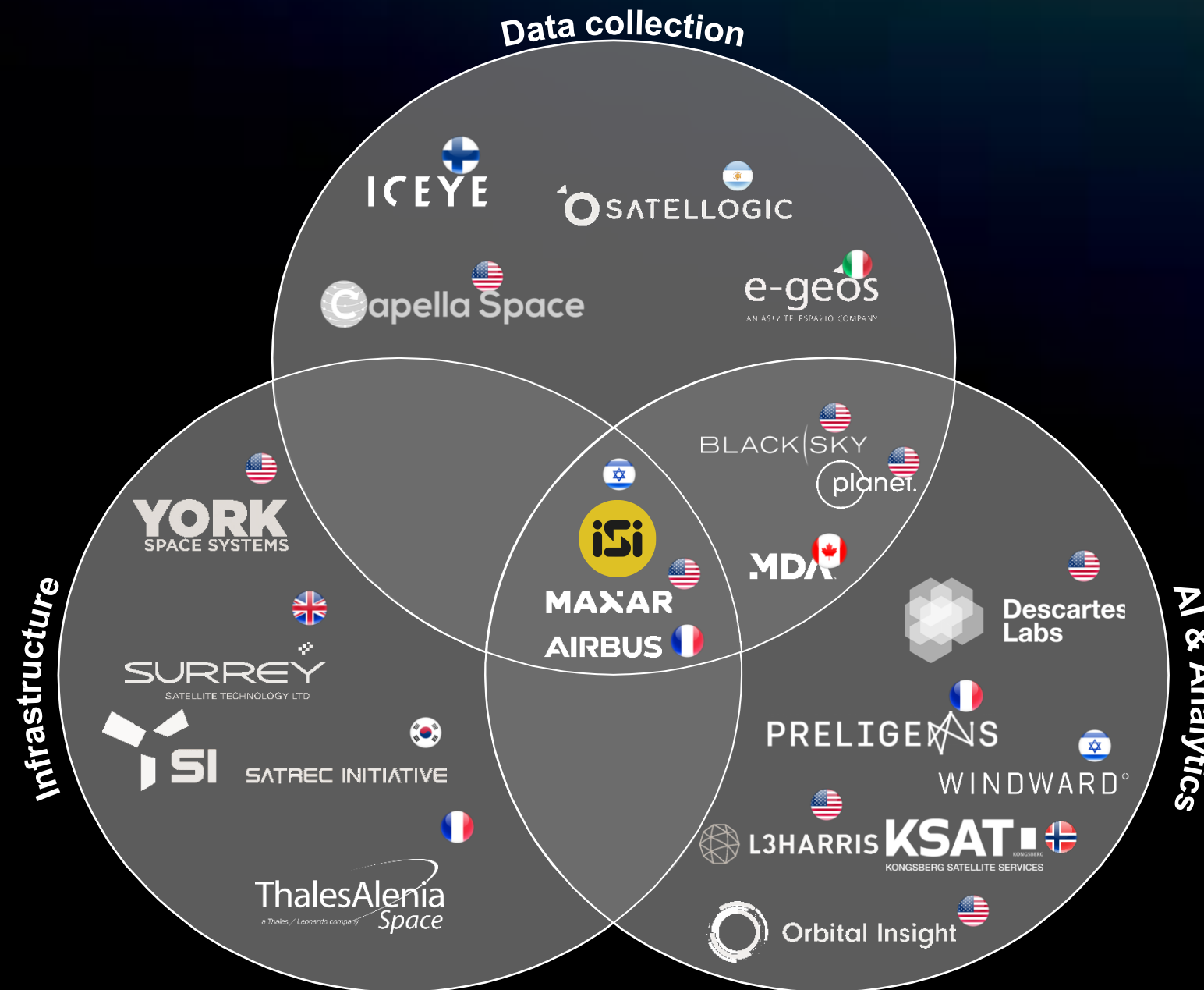


ISI'S COMPETITIVE LANDSCAPE

ISI competes with a range of companies across its product lines, with only a few having the capabilities to compete across three

INFRASTRUCTURE

- Larger satellite manufacturers tend to be price-sensitive, while smaller peers pursue projects with narrower scope
- Vertically integrated operators compete with ISI but are more focused internally



DATA COLLECTION

- Competes with Maxar and Airbus on VHR while Planet and Satellogic are low resolution
- Little commercial overlap with Asian Satellite operators

AI & ANALYTICS

- Very few firms specialise in defense and intelligence
- Most earth-observation satellite operators like ISI have built-in analytics capabilities which they are scaling

REVISED 24 REVENUE AND EBITDA ESTIMATES (REPORTED IN Q3 23 RESULTS)²



Key Assumptions for revised 2024 Revenue and EBITDA Estimates²:

- The Company is in advanced negotiations towards signing significant contracts (among others with customers A and B)
- The Company expects significant growth in its business activities in the coming year.
- In light of the delay in the entry of significant transactions for which negotiations are still ongoing,

the Company believes that during 2024 the Company will sell services and products in the amount of approximately USD 70-90 million and present EBITDA of approximately USD 30-36 million.

- Growth in respect of the above significant transactions will also be reflected in subsequent years

Source: Company information

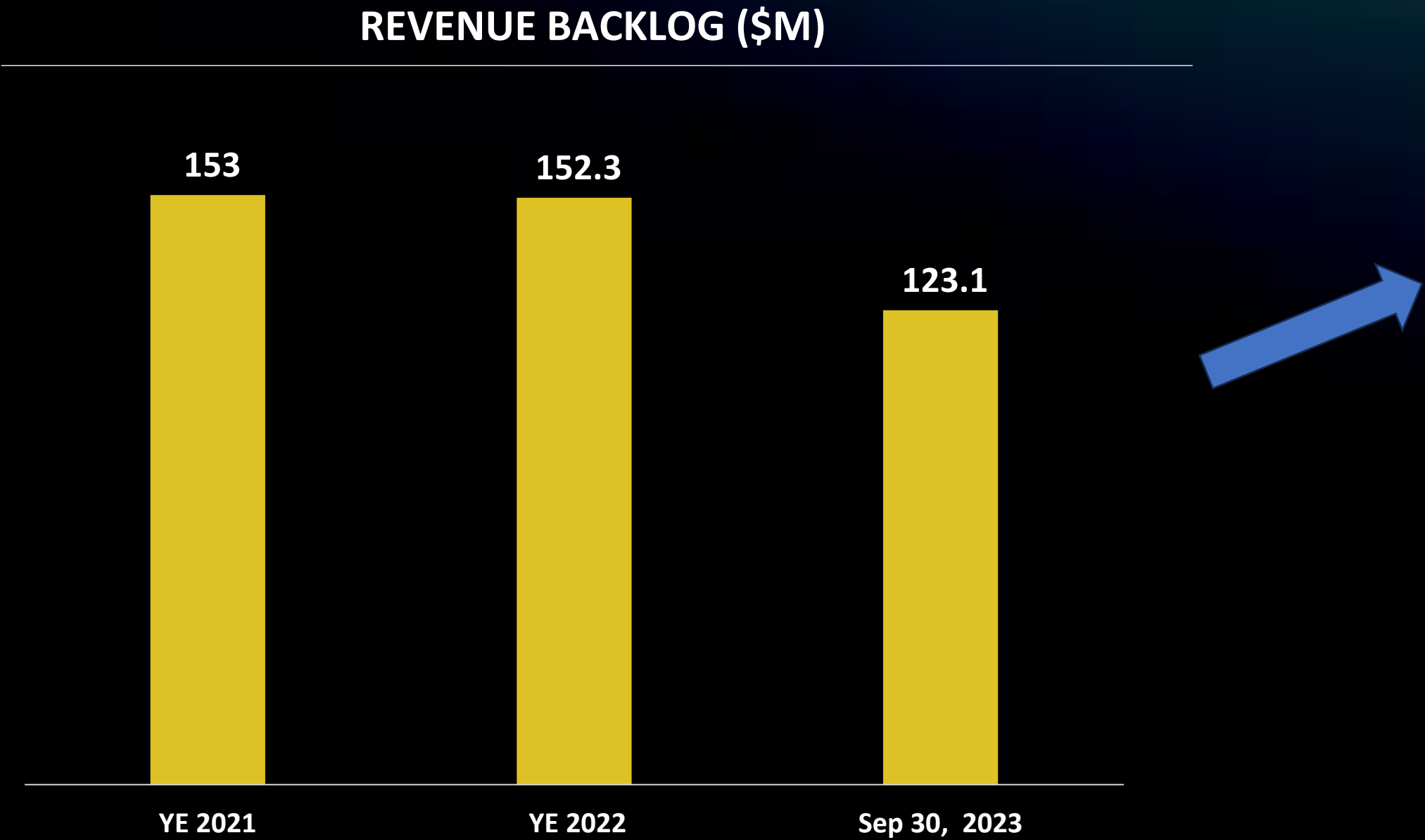
Note: 1. Calculated using range of 2024 Revenue and EBITDA guidance reported on November 16, 2023) vs. 2022 reported financial results. For CAGR calculation see - Compound Annual Growth Rate (CAGR) Formula and Calculation (investopedia.co

Note: 2. For further information regarding 2024 estimates, see Directors report for 3rd quarter 2023 - הבורסה - מאיה | 2023 לשנת 3 דוח רבעון 3 (tase.co.il)



SPACE-BASED
INTELLIGENCE
SOLUTIONS.

REVENUE BACKLOG



On Jan 8th, 2024 the Company announced that it has signed a contract, via a local company, with Customer B worth \$37.5M for the provision of satellite services from EROS C2 and EROS C3 satellites over a period of 5 years¹, with an effective start date as of Nov 1, 2023.

Source: Company information
Note: 1. See Immediate Release [תמורת \\$7.5 מ' לשנה, ל-5 שנים, אופ' להארכה | מאיה – הבורסה \(C3 EROS אימאג'סט אינט' - הסכם לאספקת שירותים מלווייני tase.co.il\)](#)



SPACE-BASED
INTELLIGENCE
SOLUTIONS.

Thank you

