

# wilk

THE REVOLUTION OF MILK

**Revolutionizing  
the Production of  
Milk**

---



# Forward Looking Statement

---

This presentation was prepared by Wilk Technologies Ltd. (the “Company”), and is given to you only for the provision of concise information for the sake of convenience, and may not be copied or distributed to any other person. The data and information included in this presentation should not be interpreted as advice and should not be relied on for any purpose. Such data and information should not be copied or used except as expressly permitted in writing.

This presentation does not purport to be comprehensive or to contain any and all information which might be relevant in connection with the making of a decision on an investment in securities of the Company. No explicit or implicit representation or undertaking is given by any person regarding the accuracy or integrity of any information included in this presentation. In particular, no representation or undertaking is given regarding the realization or reasonableness of any forecasts regarding the future chances of the Company. To obtain a full picture of the activities of the Company and the risks entailed thereby, see the full immediate and periodic reports filed in connection

with the Company with the Israel Securities Authority and the Tel Aviv Stock Exchange Ltd., including warnings regarding forward-looking information, as defined in the Securities Law, 5728-1968, included therein. The forward-looking information in the presentation may not materialize, in whole or in part, or may materialize differently than expected, or may be affected by factors that cannot be assessed in advance. For the avoidance of doubt, it is clarified that the Company do not undertake to update and/or modify the information included in the presentation to reflect events and/or circumstances occurring after the date of preparation of the presentation. This presentation is not an offer or invitation to buy or subscribe for any securities. This presentation and anything contained herein are not a basis for any contract or undertaking, and are not to be relied upon in such context. The information provided in the presentation is not a basis for the making of any investment decision, nor a recommendation or an opinion, nor a substitute for the discretion of a potential investor

# Video

---

<https://youtu.be/0UMiycn6dCM>

# Company Highlights








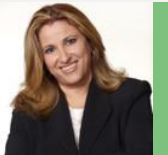

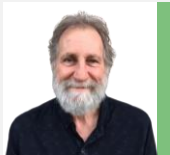
Wilk is seeking to redefine the dairy industry with **real, cell-based milk**

## Company Overview

- **Israeli-based**, pioneer in the development of cultured milk
- **Started its operations in 2020** leveraging licensed academic research since 2009
- **First cell-based milk company to go public**, listed on the TASE since February 2021
- **Strategic partnership** with the Central Bottling Company (franchise owner of Coca-Cola Israel), and owner of Tara, a leading international dairy company
- **Broad market potential**, including dairy products, human breast milk, and specialty dairy ingredients



# Highly-Experienced Team

MANAGEMENT		<b>Tomer Aizen</b> CEO 15+ years of experience in commercial managerial positions in the healthcare field. Skilled in creating value through multidimensional actions. Holds a bachelor's degree in Law and is a certified Lawyer.		<b>Nathaniel Benchemhoun</b> VP Business Development 10+ years of experience in operational management positions. Rich experience in VC and corporate innovation. Trusted advisor to global Fortune 500 companies in the fields of strategy and innovation.		<b>Prof. Nurit Argov-Argaman</b> CTO 14+ years of specialization in the study of metabolic control in milk compositions. Senior Lecturer at the Hebrew University of Jerusalem. Postdoctoral Fellowship in Food Science and Technology.
		<b>Rachelle Neumann</b> VP Marketing 20+ years of executive leadership in the healthtech, technology, and other sectors. Previously a trusted advisor to management teams at Roche, Philips, Teva, and Toyota. Certified Public Accountant and holds an MBA.		<b>Tomer Keren</b> VP R&D 18+ years of experience in the biomedical domain. Managerial experience including CTO of Biogal Galed Labs. Doctorate and a degree in molecular biology and food biochemistry.		
		<b>Yael Ravhon</b> Advisor Former founder and CEO of Abbott Israel. 20+ years of experience in the field of pharma, medical nutrition and baby food.		<b>Prof. Bruce German</b> Advisor Top global KOL in the scientific field of milk and breast milk. Respected advisor to various and globally leading dairy companies.		<b>Prof. Kevin Nicholas</b> Advisor Respected scientist focused on exploiting the evolution of lactation to identify the function and delivery of milk bioactives.



# Milk is Unique

---

## Evolution

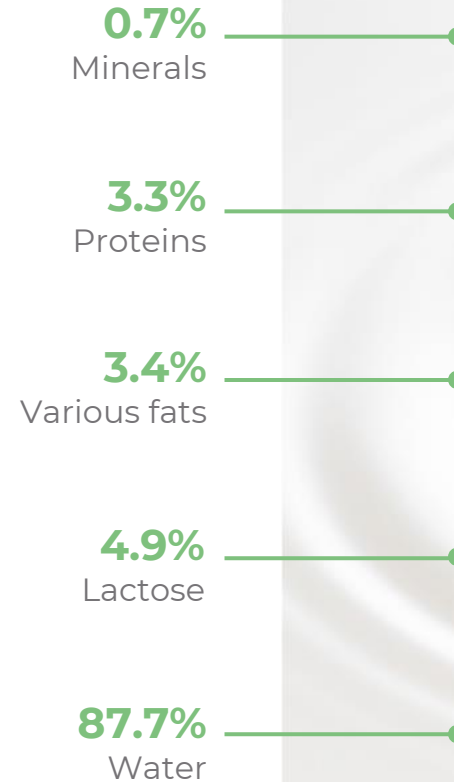
Milk is the only whole food evolved solely to provide complete nutrition to mammals.

## Complex

Contains over 2000 micro and macronutrients which support survival and development.

## Unique

Its unique delivery system enables the most efficient mechanism to absorb nutrients





# Challenges in the Traditional Dairy Industry



## Boom in Consumption

- Expected global population of ~10 billion by 2050<sup>1</sup>
- 56% growth in global food consumption by 2050 versus 2010<sup>1</sup>



## The Dairy Industry Environmental Effects

- 1L of milk requires 1,000L of water<sup>2</sup>
- 4% of total global anthropogenic GHG emissions<sup>3</sup>

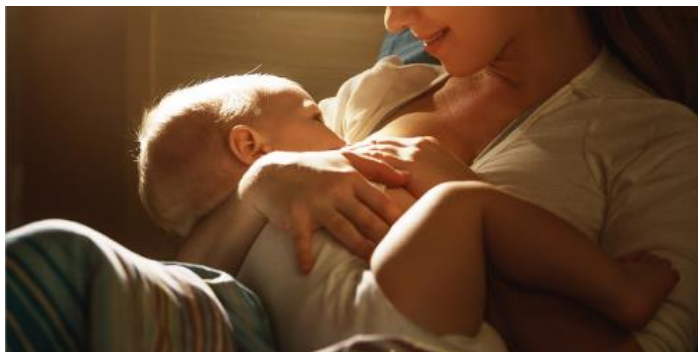


## Consumer Shift For Eco-Friendly Alternatives

- Growing consumer concern regarding animal welfare<sup>4</sup>
- Rising demand for sustainably farmed and animal-free goods<sup>4</sup>

Source: World Resources Institute ("WRI"), Food for Water, Food and Agriculture Organization of the United Nations ("FAO"), Arizon. | (1) As per WRI; (2) As per Food for Water; (3) As per FAO; (4) As per Arizon.

# Challenges for Babies



## Limited Proportion of Babies Get Breastfed

- World Health Organization recommends exclusive breastfeeding for the first 6 months<sup>1</sup>
- Less than half of babies are breastfed for that entire period<sup>1</sup>



## Preterm Newborns Require Breast Milk to Survive

- 10% of babies are born preterm<sup>2</sup>
- Potentially fatal consequences<sup>2</sup>



## Limited Availability of Safe Human Breast Milk

- Growing consumer concern regarding animal welfare<sup>4</sup>
- Rising demand for sustainably farmed and animal-free goods<sup>4</sup>

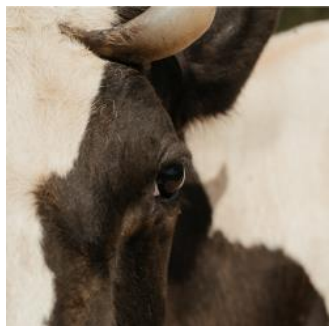
Source: World Health Organization, Centers for Disease Control and Prevention ("CDC"), Food and Drug Administration ("FDA"). | (1) As per World Health Organization; (2) As per CDC; (3) As per FDA.

THE REVOLUTION OF MILK

STRICTLY PRIVATE



# Transformative Technology



## 01 Collection

Collecting mammalian mammary gland tissue.



## 02 Isolation

Isolating mammary epithelial cells.



## 03 Cultivation

Cultivating milk-producing cells in bioreactor.

**wilk**

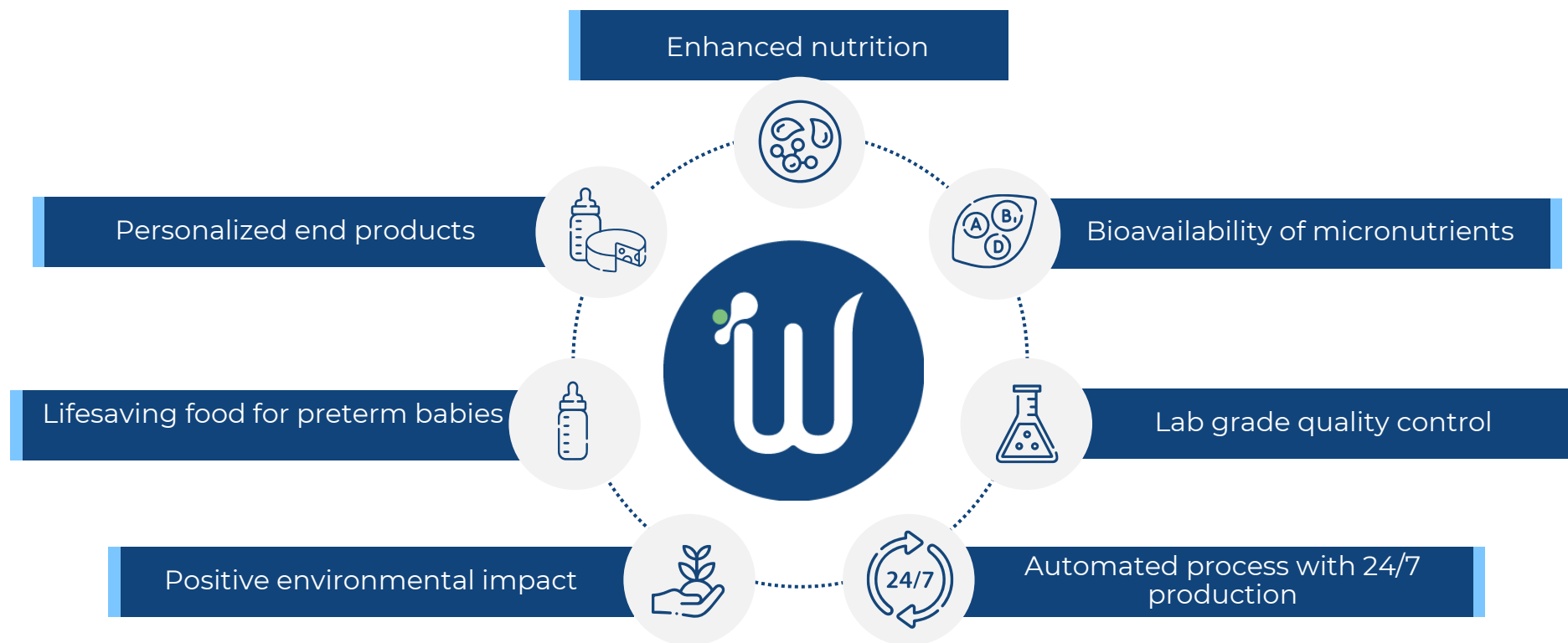
INGREDIENTS



THE REVOLUTION OF MILK

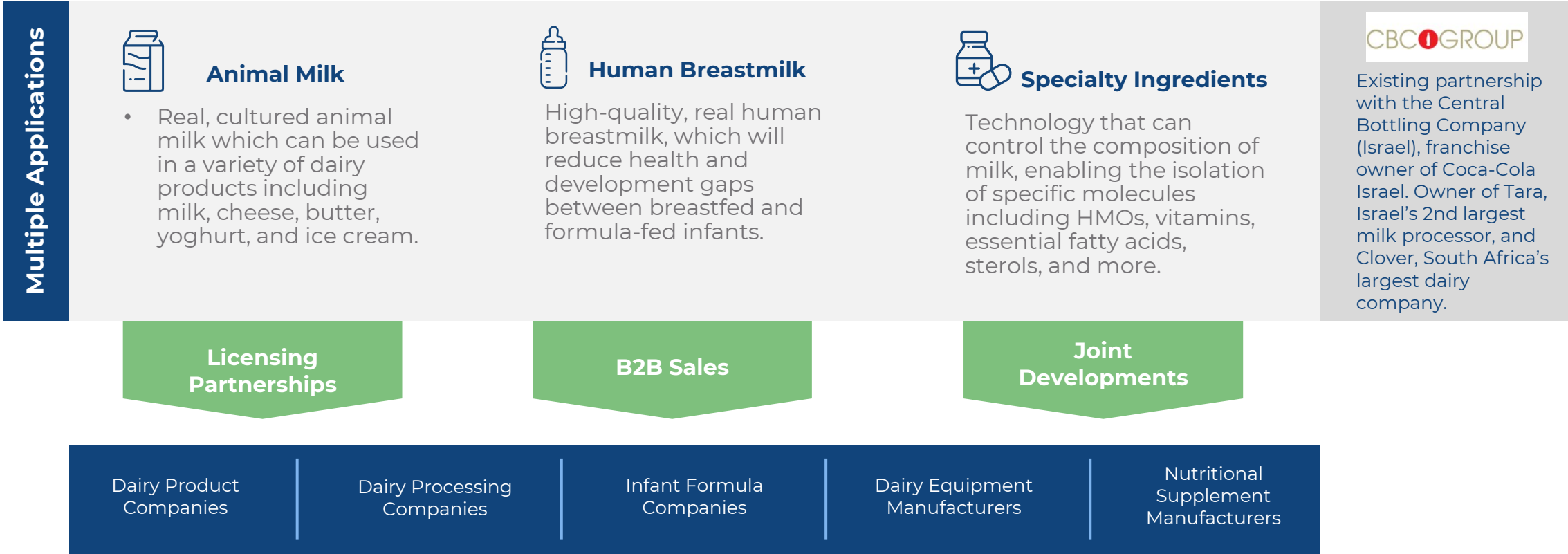
STRICTLY PRIVATE

# Benefits of Cell-Based Milk

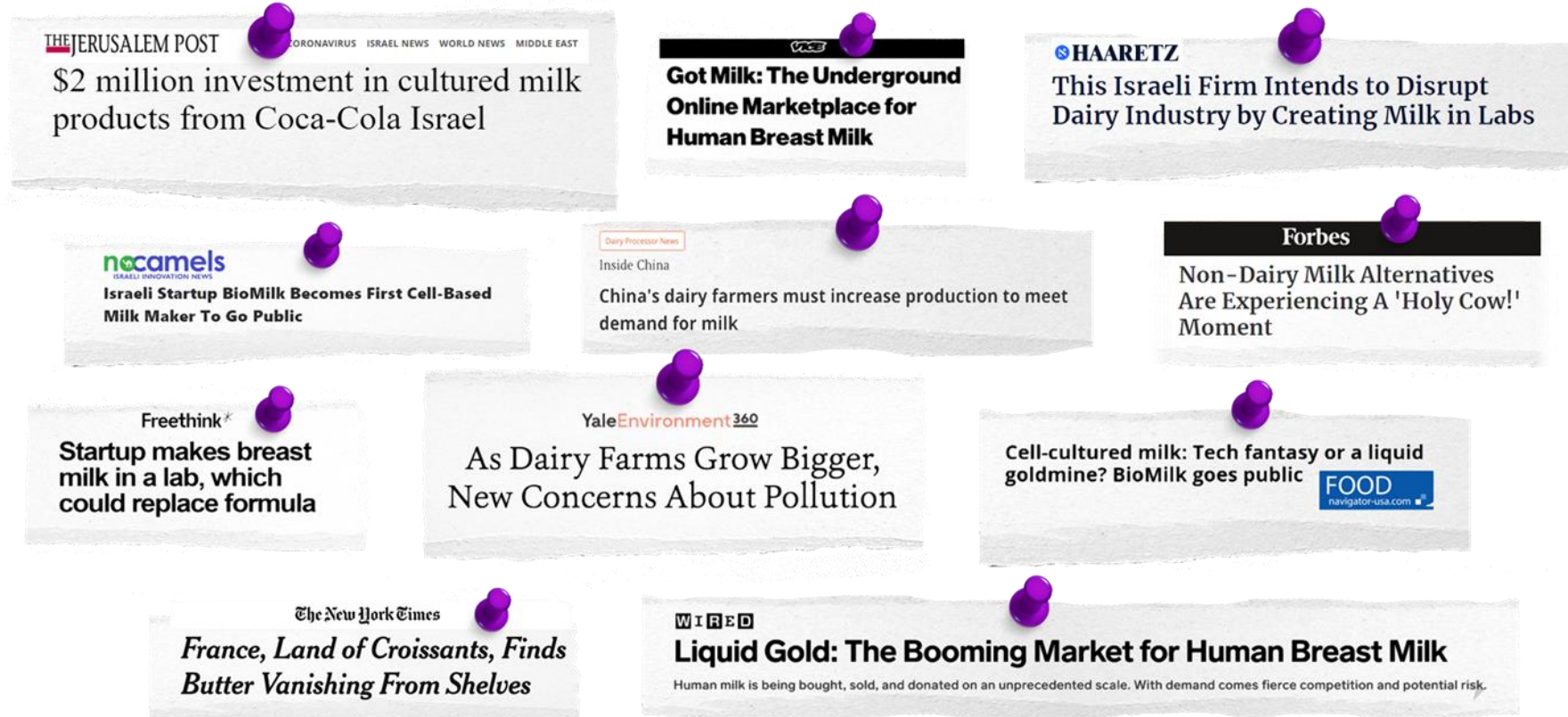


By revolutionizing the production of milk, we will benefit **humankind and the environment alike**

# Business Model



# International Awareness and Recognition in 2021



# Leadership on ESG Issues



Wilk directly addresses 10 of the United Nations' 17 Sustainable Development Goals

Zero Hunger

Life on Land

Climate Action

Responsible Consumption and Production

Good Health & Well-Being

Gender Equality

Partnerships for the Goals

Industry, Innovation and Infrastructure

Decent Work and Economic Growth

Reduce Inequalities





**THANKS FOR**  
YOUR ATTENTION

[info@wilkismilk.com](mailto:info@wilkismilk.com)